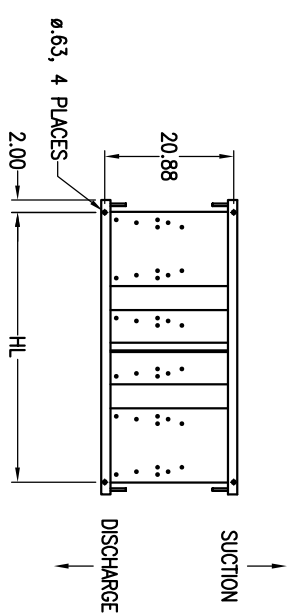
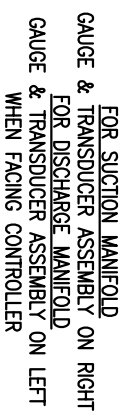
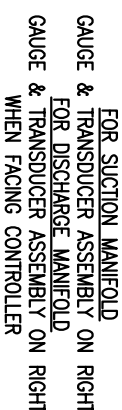
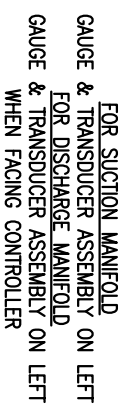
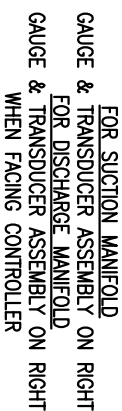
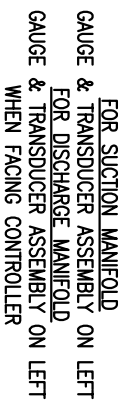


1	2	3	4	5	6	7	8	9	10	11	12	13	14	15	16	17	18	19	20	21	22	23	24	25	26	27	28	29	30	31	32	33	34	35	36	37	38	39	40	41	42	43	44	45	46	47	48	49	50	51	52	53	54	55	56	57	58	59	60	61	62	63	64	65	66	67	68	69	70	71	72	73	74	75	76	77	78	79	80	81	82	83	84	85	86	87	88	89	90	91	92	93	94	95	96	97	98	99	100
---	---	---	---	---	---	---	---	---	----	----	----	----	----	----	----	----	----	----	----	----	----	----	----	----	----	----	----	----	----	----	----	----	----	----	----	----	----	----	----	----	----	----	----	----	----	----	----	----	----	----	----	----	----	----	----	----	----	----	----	----	----	----	----	----	----	----	----	----	----	----	----	----	----	----	----	----	----	----	----	----	----	----	----	----	----	----	----	----	----	----	----	----	----	----	----	----	----	----	-----



## ANCHOR BOLT DETAILS


### TRIPLEX SYSTEM

1. DIMENSIONS MAY VARY +/- 1/4"
2. BASE TO BE GROUDED ON SITE BY OTHERS.
3. WIRING COMPONENT LOCATION SUBJECT TO CHANGE. CONSULT FACTORY FOR AS BUILT LOCATION.
4. NEC WORKING CLEARANCE 48" FROM FRONT OF CONTROLLER FACE.
5. FACTORY TESTED AND CALIBRATED BEFORE SHIPMENT.
6. IF THERMAL RELIEF OPTION SELECTED, VALVE COMMON DRAIN PIPED TO SAME SIDE AS CUSTOMER DISCHARGE.
7. IF SPD OPTION SELECTED, INCOMING ELECTRICAL CONNECTIONS C & D ARE NO LONGER NEEDED.
8. PWM[X]20 USED IN VIEWS ABOVE.
9. DIMENSION "OL" WILL VARY BY PUMP MODEL, VFD SIZE AND SPD OPTION SELECTION.
10. CONTROLLER CAN BE MOUNTED ON EITHER LEFT OR RIGHT SIDE, DEPENDING ON CUSTOMER'S PREFERENCE.

ITEM NO.	DESCRIPTION
1	TOUCH SCREEN CONTROLLER
2	VARIABLE FREQUENCY DRIVE (VFD)
7	PRESSURE TRANSDUCER
8	STRUCTURAL STEEL BASE
9	SINGLE POINT DISCONNECT (SPD) (OPTIONAL)

INCOMING ELECTRICAL CONNECTIONS					
LEGEND	DESCRIPTION	PHASE	VOLTAGE		
C	CONTROLLER	1	120V	240V	-
D	VARIABLE FREQUENCY DRIVE	1 3	200-240V	380-480V	525-600V
E	SINGLE POINT DISCONNECT	3	120V	240V	480V 600V

DIMENSION TABLE				
PUMP	OL (NOTE-5)	HM	ME	HL
PWM[X]1.3&5	47.7-68.5	5.4	4.3	43.7
PWM[X]10&15	47.7-76.3	6.5	5.0	43.7
PWM[X]20	47.7-76.3	6.5	5.6	43.7
PWM[X]33	47.7-76.3	7.5	5.6	43.7

<div></div> <div><p><b>COMPANY CONFIDENTIAL:</b> Information contained herein is confidential. It is the property of Pentair, Inc. It is to be used solely for the purpose provided and it is not to be disclosed to anyone without the prior written consent of Pentair.</p></div>										INTERNAL	
<div><p><b>TRIPLEP - INTERLPOD SYSTEM</b></p><p><b>FRONT VIEW</b></p></div>										DO NOT DRAWING	
PLOT SCALE	1:15	PATTERN NUMBER	-	DESIGN BY	GARY RS	DATE	04/27/16	CHECKED BY	[Signature]	APPROVED BY	[Signature]
SIZE	D	PART NUMBER	295 0003 000	REV	A	REV	A				
REV	A										
REV											
REV											
REV											
REV											
REV											
REV											
REV											
REV											
REV											
REV											
REV											
REV											
REV											
REV											
REV											
REV											
REV											
REV											
REV											
REV											
REV											
REV											
REV											
REV											
REV											
REV											
REV											
REV											
REV											
REV											
REV											
REV											
REV											
REV											
REV											
REV											
REV											
REV											
REV											
REV											
REV											
REV											
REV											
REV											
REV											
REV											
REV											
REV											
REV											
REV											
REV											
REV											
REV											
REV											
REV											
REV											
REV											
REV											
REV											
REV											
REV											
REV											
REV											
REV											
REV											
REV											
REV											
REV											
REV											
REV											
REV											
REV											
REV											
REV											
REV											
REV											
REV											
REV											
REV											
REV											
REV											
REV											
REV											
REV											
REV											
REV											
REV											
REV											
REV											
REV											
REV											
REV											
REV											
REV											
REV											
REV											
REV											
REV											
REV											
REV											
REV											
REV											
REV											
REV											
REV											
REV											
REV											
REV											
REV											
REV											
REV											
REV											
REV											
REV											
REV											
REV											
REV											
REV											
REV											
REV											
REV											
REV											
REV											
REV											
REV											
REV											
REV											
REV											
REV											
REV											
REV											
REV											