

# COCA-COLA NORTH AMERICA EQUIPMENT BULLETIN..... AUTHORIZATION

**DATE :** April 13<sup>th</sup>, 2009

**NUMBER :** AUTH-91

**SUBJECT :** Schroeder America's Magnum Bar Gun

*Effective March 1<sup>st</sup>, 2009, Coca-Cola North America Sales Equipment Engineering has authorized the Schroeder America Magnum Bar Gun.*



## Magnum Handle Benefits

### More Robust Handle and Nozzle

#### Nozzle

- Face Seal & Twist-Lock – Easier On / Off

### Bottom Plate with Built-In Spring Retainer

- Easier to service internal handle components

## Magnum Flow Control Manifold Benefits

### Flow Controls

- Improved Ratio Control
- Preset Soda & Water Flow Controls

### Ergonomic Design

- Forward Facing Flow Controls
- Retained Tubing & Fitting Retainer Clips

### Quick Release Locking Pin

- No Tools Needed to remove bar gun from the mounting plate

### Complete Circuit Labeling

- Button Plate & Handle Input Maps
- Each Tube is Labeled (Ex. Water, Soda, S1, S2, etc.)

### Positive Stop Shut-Off

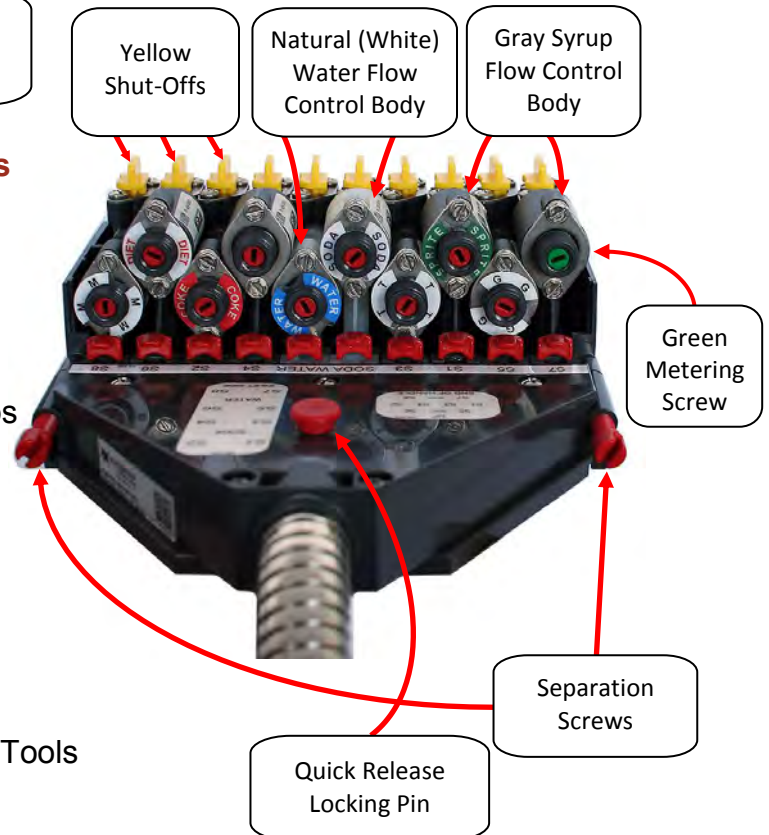
- Completely Stops Flow & Requires No Tools

### Color Coded Components

- Syrup Flow Control Body – Gray
- Water Flow Control Body – White
- Flow Control Adjustment Screws – Red
- Metering Screw Adjustment Screws - Green

### Separation Screws

- Side Screws allow easy separation of Flow Control Manifold and Tube Collector



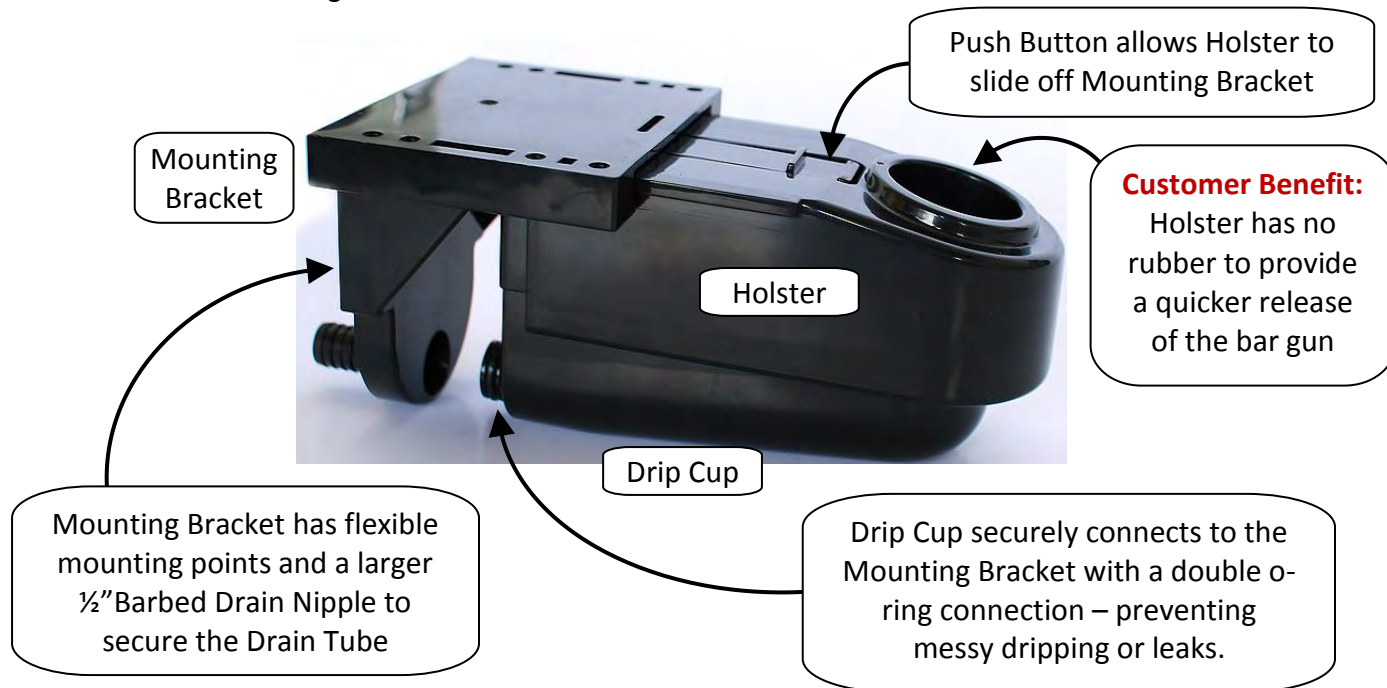
**COCA-COLA NORTH AMERICA ... FOR INTERNAL USE ONLY**

Drip Cup Components		
Holster	Drip Cup	Mounting Bracket

## Magnum Drip Cup Benefits

### Clean Design

- Sanitary Air Gap
- Completely Removable & Dishwasher Safe Drip Cup and Holster
- Faster Draining



## Installation Benefits of Magnum Bar Gun

### Mounting Plate

- 12 more mounting points (17 Total)
- Additional Mounting Points allow installation with only small mounting surfaces

### Spring Loaded Locking Pin

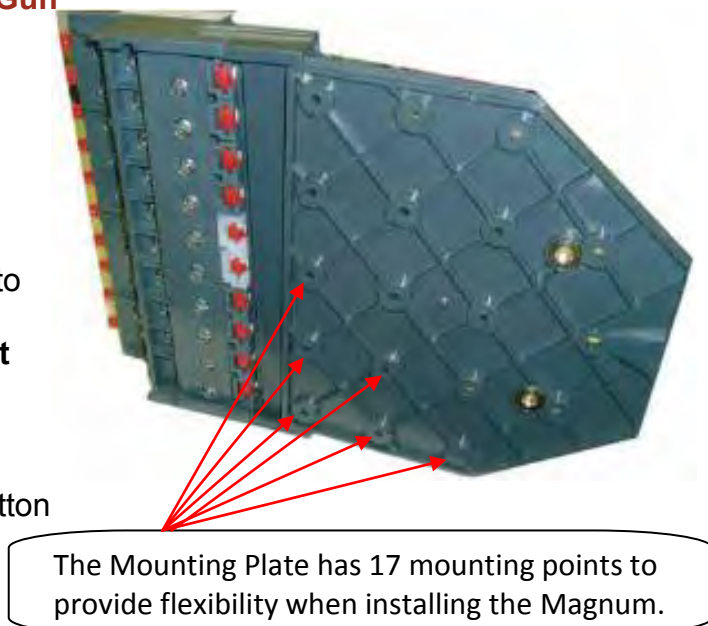
- No Tools Needed to attach bar gun to the Mounting Plate

### Water and Soda Flow Controls Preset for 1.5 ounce per second flow rate.

- No Adjustment Needed

### Labeling

- Easily identify the circuit for each button



## Available Magnum Bar Gun Models

The Magnum Bar Gun is available in the three models listed below. All models come with a 30" sheath (equivalent length to Wunder-Bar 36") and flow controls only.

Magnum IC Code	Buttons	Description	Wunder-Bar Equivalent IC Code
45880	8	7 flavors (6 Carb, 1 Non-Carb)	44028
45881	10	8 Flavors (6 Carb, 2 Non-Carb)	44029
45913	12	10 Flavors (5 Carb, 5 Non-Carb)	44037*

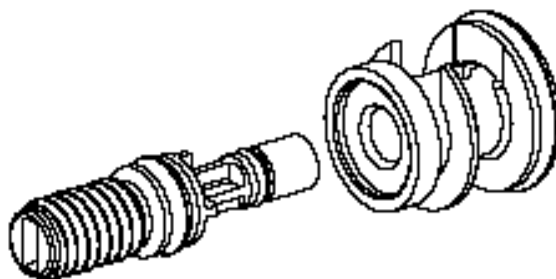
\*44037 comes with 5 metering screws. 45913 contains flow controls only.

## Orchard's Best Products Containing Pulp

For customer applications dispensing Orchard's Best with pulp, the Mechanical Control Kit is needed (Picture Below). The Mechanical Control Kit can be ordered for new installations or retrofit through Coca-Cola Parts (CCP# 119458).

The Mechanical Control Kit is easily identified by its green color.

\*Tips for Installation can be found at [Coke.net](http://Coke.net)



Mechanical Control Kit (Green) (CCP# 119458)

## GlasTender®, Jockey Boxes and Other Bar Gun Covers

The Magnum Bar Gun is slightly larger than the Wunder-Bar Bar Gun. Bar Gun covers currently in the field were designed to fit only the Wunder-Bar Bar Gun. Since the Magnum is slightly larger, it **may not** fit inside of existing bar gun covers. Use the Bar Gun Dimensions Table below to see whether or not a Magnum Bar Gun will fit in your application.

### Bar Gun Dimensions

Component	Dimension	Magnum Total	Difference from Wunder-Bar
8- & 10-Button Bar Guns (45880 & 45881)	Width	7.93"	+0.5"
	length (incl. 90 fitting)	9.83"	+1.5"
	Height	3.25"	+0.5"
12- & 14-Button Bar Guns (45913)	Width	10.78"	+1.2"
	length (incl. 90 fitting)	9.83"	+0.9"
	Height	3.25"	+0.5"
Drip Cup	Width	4.25"	+1.8"
	Length	7.41"	+0.5"
	Height	3.64"	+0.8"

## Service and Installation

The design of the Magnum focuses on making the installation and service easy. From flow controls facing the easiest service direction to shut-offs that completely stop fluid flow, Service Providers will see shorter service times. For exploded view drawings, service tips and parts stocking lists, check out the information found at [Coke.net](http://Coke.net).

**Coming Soon...Look for the new E-Learning Module on the E-Learning Portal that will be available in July!**

## Recommended Magnum Truck Parts Stocking List

Type	Description	CCP #	Truck Qty	Item Cost	Truck Stock Cost
Spring	Handle Plunger Spring	119307	8	\$0.17	\$1.36
O-Ring	Handle Bottom Plate O-Ring	119306	5	\$0.13	\$0.65
Assy	Handle Plunger Assy	119308	3	\$1.22	\$3.66
O-Ring	Handle Plunger O-Ring	119309	5	\$0.23	\$1.15
Seal	Nozzle Seal	119283	2	\$0.18	\$0.36
Bottom Plate	Bottom Plate (10B) Red w/ O-Rings	119303	1	\$5.78	\$5.78
Bottom Plate	Bottom Plate (12B) Red w/ O-Rings	119304	1	\$6.39	\$6.39
Nozzle	Red Nozzle	119284	2	\$1.68	\$3.36
Assy	Heal Assy (10B)	119318	2	\$1.32	\$2.64
Assy	Heal Assy (12/14B)	119319	1	\$3.15	\$3.15
Separator	Syrup Separator	119174	1	\$7.56	\$7.56
Tool	Flow Control Tool	119456	1	\$7.10	\$7.10
				Total	\$43.16

### FOR ADDITIONAL INFORMATION CONTACT:

PhoneFix® - Primary	Customer Service Operations	Sales Equipment Engineering	Coca-Cola Parts
	John McCullough	William Freeman	
(800) 817-2653	404.887.2756	404.676.0980	(800) 638-2653