

PRODUCT REGISTRATION SERIAL NUMBER LOCATOR

EXAMPLE

IMPORTANT

Your Pentair serial number should be on a label that looks like this



NOTE

You may find your serial number located on the product or the packaging, and in some cases, serial number may be on your receipt.

SUPPORT

CONTACT

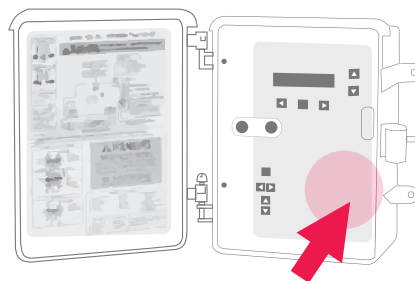
If you need additional assistance locating your serial number, please contact Pentair Aquatic Systems technical support for help at:

[1-800-831-7133](tel:1-800-831-7133)

and follow the prompts for technical support.

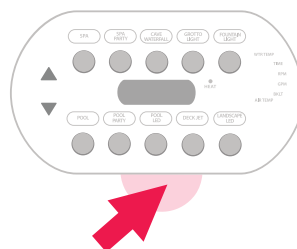
SunTouch®

ON THE BACK OF
BOARD OR SILVER
STICKER BEHIND DOOR



EasyTouch® Wireless Remote

LOCATED ON THE
BATTERY COVER
ON THE BACK
OF THE UNIT

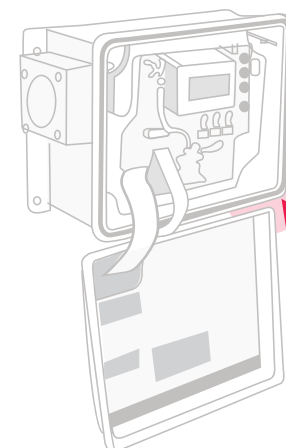
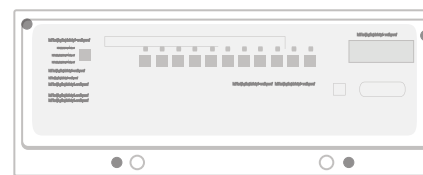


Spa Command®, ScreenLogic®

LOCATED ON
THE BACK
OF UNIT

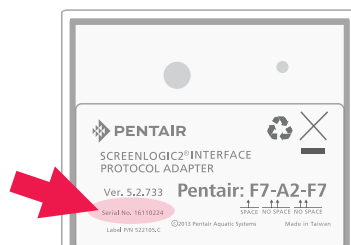
IntelliTouch® / EasyTouch®

LOCATED ON THE BACK PANEL



IntelliChem®

LOCATED ON THE
BOTTOM RIGHT
SIDE OF THE
ENCLOSURE

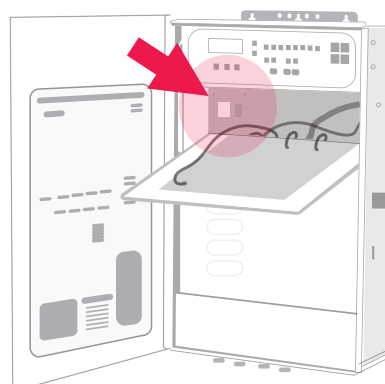


ScreenLogic 2® Interface and Protocol Adapter

ON THE END OF THE
INTERFACE/ PROTOCOL ADAPTER

Load Centers

UPPER LEFT
CORNER BEHIND
CONTROL PANEL



Intelliconnect®

LOCATED INSIDE THE
WALL OF THE ENCLOSURE.

