

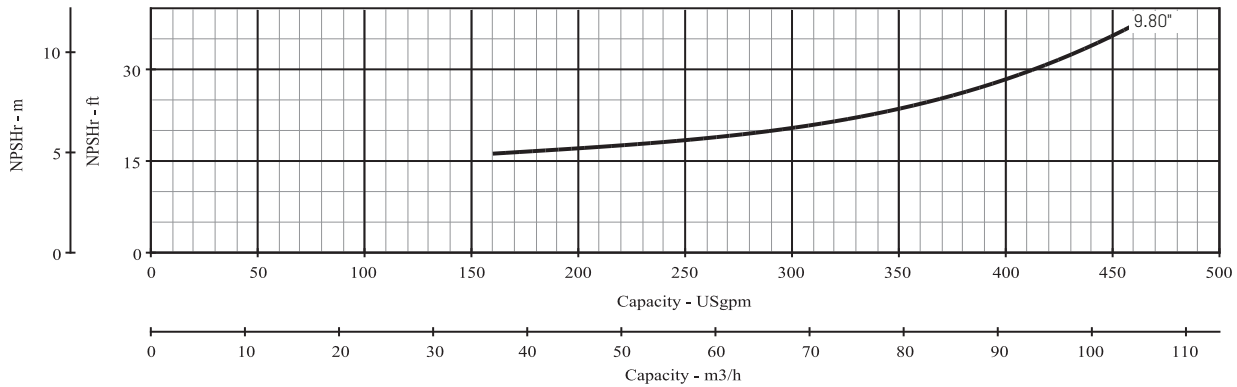
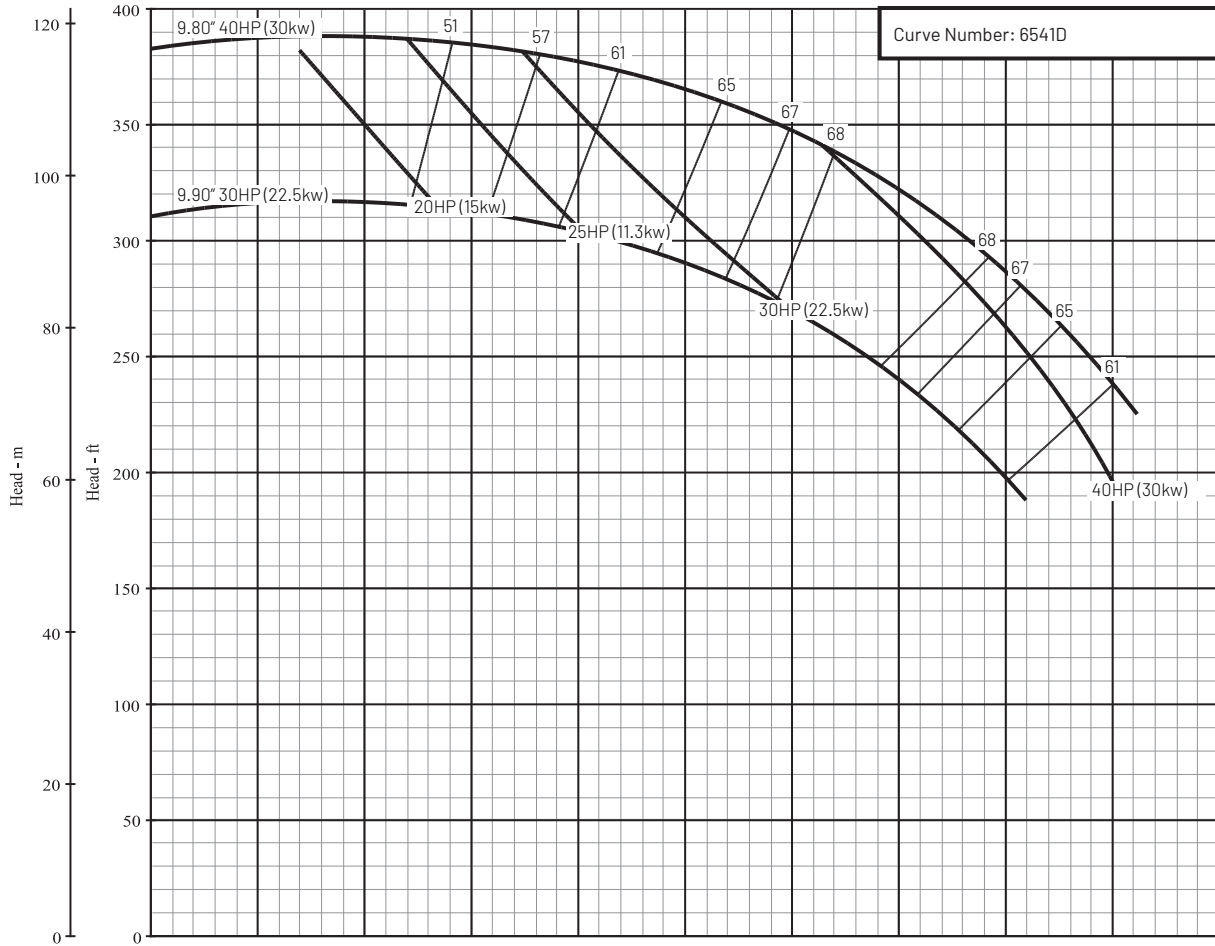
Series Name: B2E_BL

Pump Size: 2 x 3 x 10 BL

Department of Energy Requirements	
PE _{icl}	0.95
Model	B2EBL
Imp. Dia. (in.)	9.80

Available Configurations	
CCMD	B2EPBL
Frame	
SAE	

Curve Conditions	
Nominal RPM	3500
Maximum Working Pressure	266 PSI (18 BAR)
Based on Fresh Water @ F	68 (20 C)



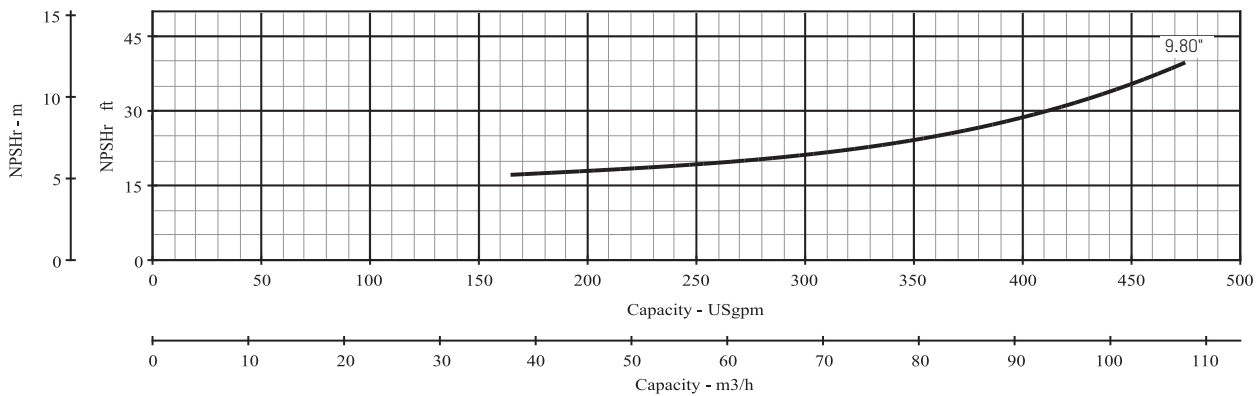
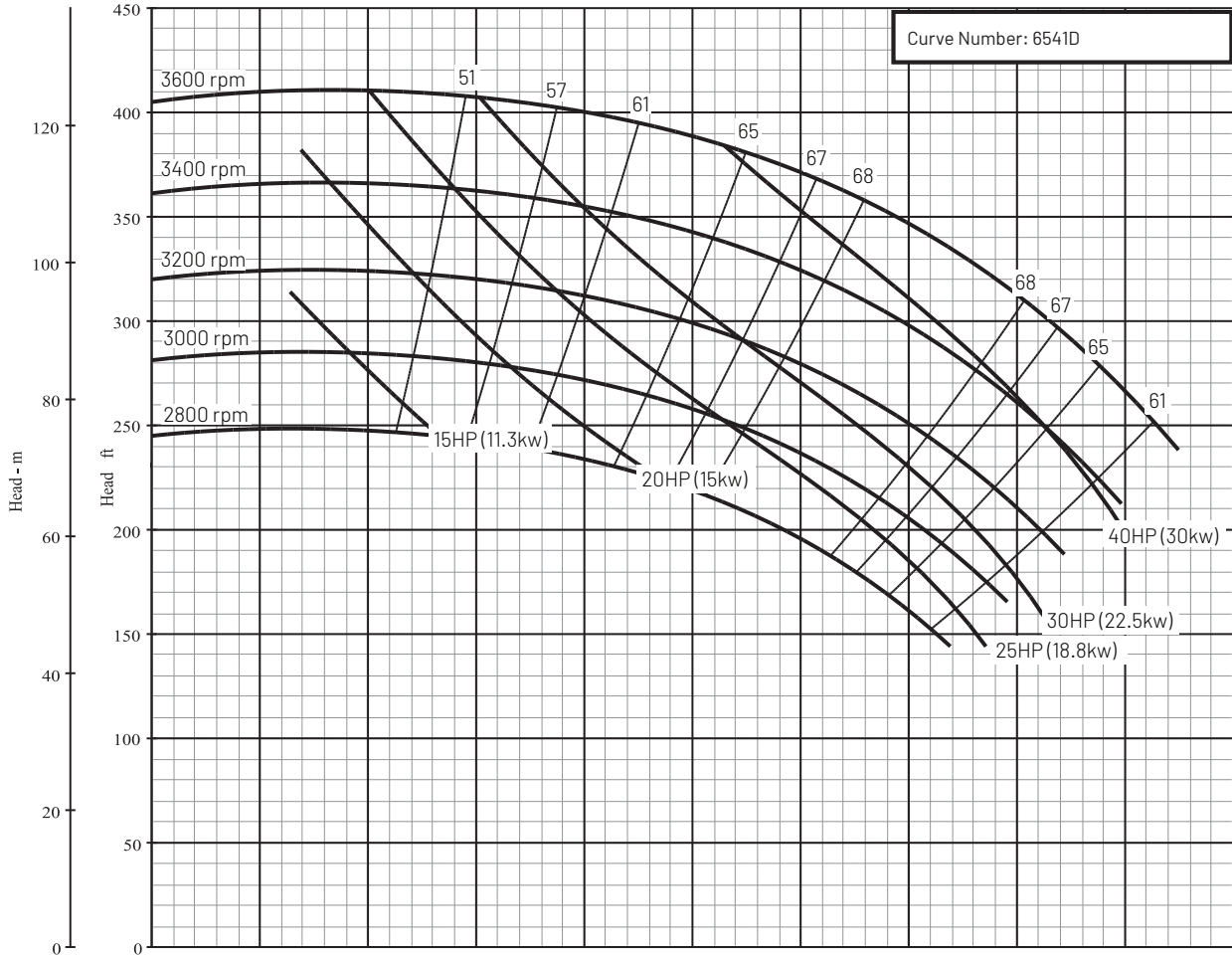
Series Name: B2E_BL

Pump Size: 2 x 3 x 10 BL

Department of Energy Requirements	
PEI _{CL}	0.95
Model	B2EBL
Imp. Dia. (in.)	9.80

Available Configurations	
CCMD	B2EPBL
Frame	
SAE	

Curve Conditions	
Nominal RPM	VARIOUS
Maximum Working Pressure	266 PSI (18 BAR)
Based on Fresh Water @ F	68 (20 C)



This product as sold in U.S. is regulated by 10 CFR Parts 429 and 431.

293 Wright Street | Delavan | WI 53115 | www.BerkeleyPumps.com

For a detailed list of where Pentair trademarks are registered, please visit www.pentair.com/en/registrations.html. Pentair trademarks and logos are owned by Pentair PLC, or its affiliates. Third party registered and unregistered trademarks and logos are the property of their respective owners. Because we are continuously improving our products and services, Pentair reserves the right to change specifications without prior notice. Pentair is an equal opportunity employer. BK13091 DOE (2/15/20) © 2020 Pentair. All Rights Reserved.