

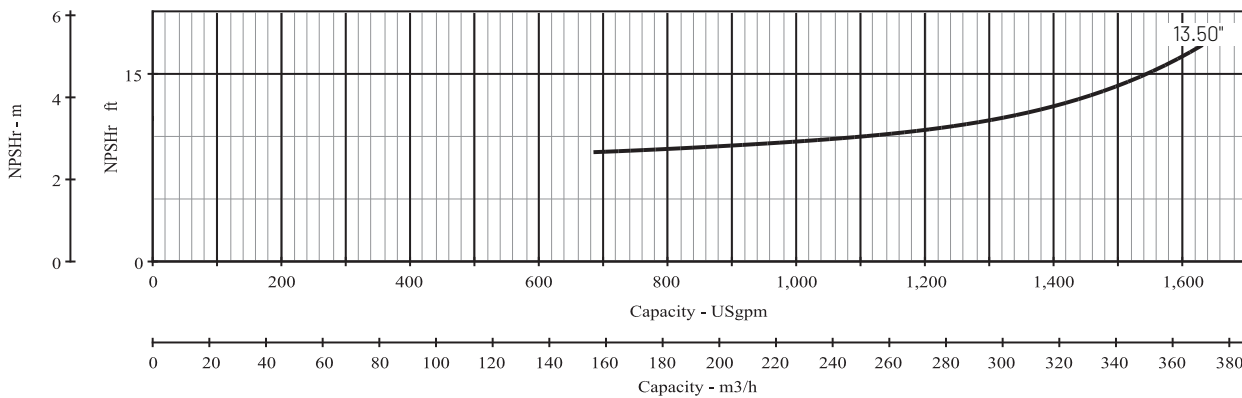
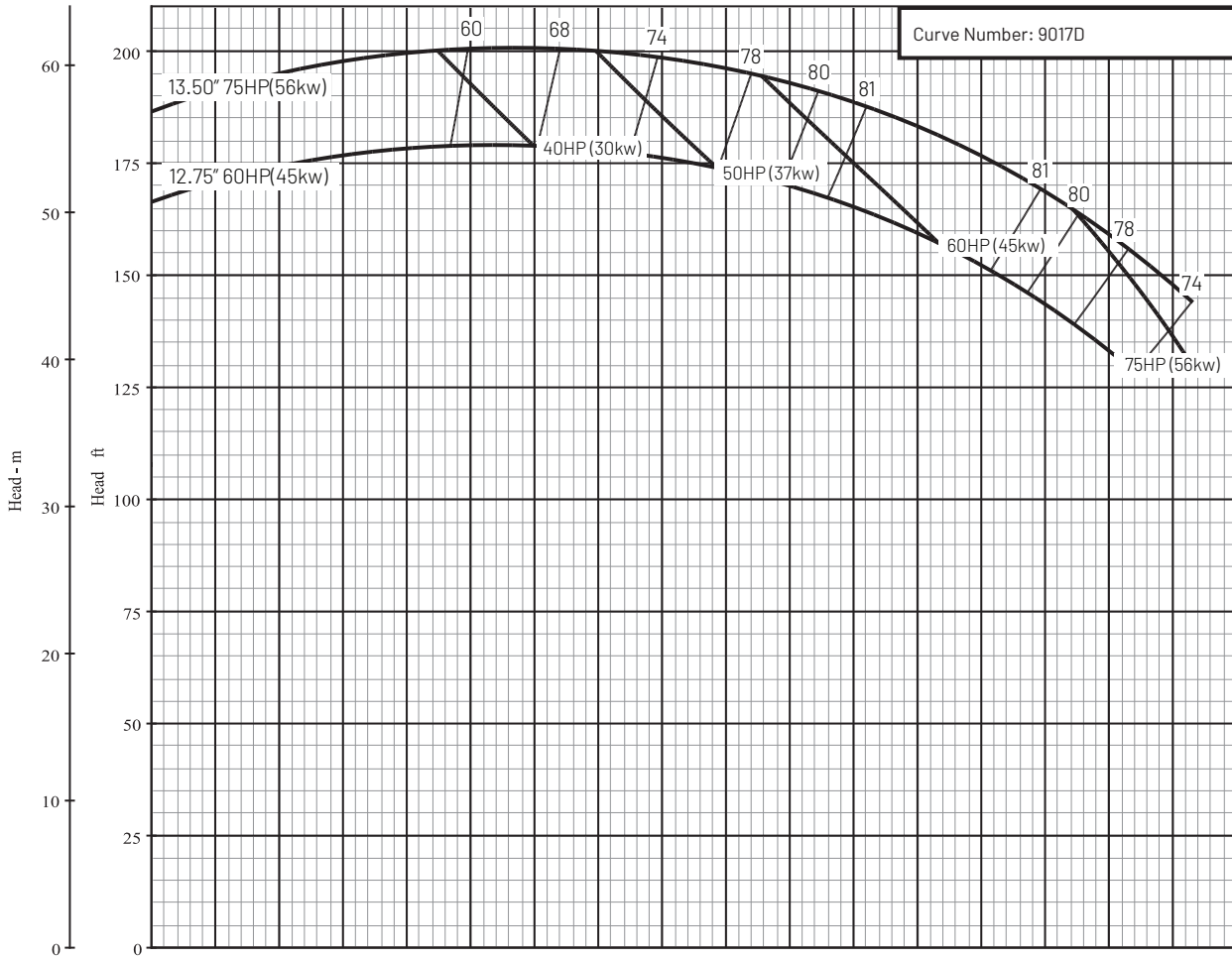
Series Name: B4J_BHH

Pump Size: 4 x 6 x 13 BHH

Department of Energy Requirements	
PEI _{CL}	0.96
Model	B4JBHH
Imp. Dia. (in.)	13.50

Available Configurations	
CCMD	B4JPBHH
Frame	B4JRBHH
SAE	

Curve Conditions	
Nominal RPM	1750
Maximum Working Pressure	266 PSI (18 BAR)
Based on Fresh Water @ F	68 (20 C)



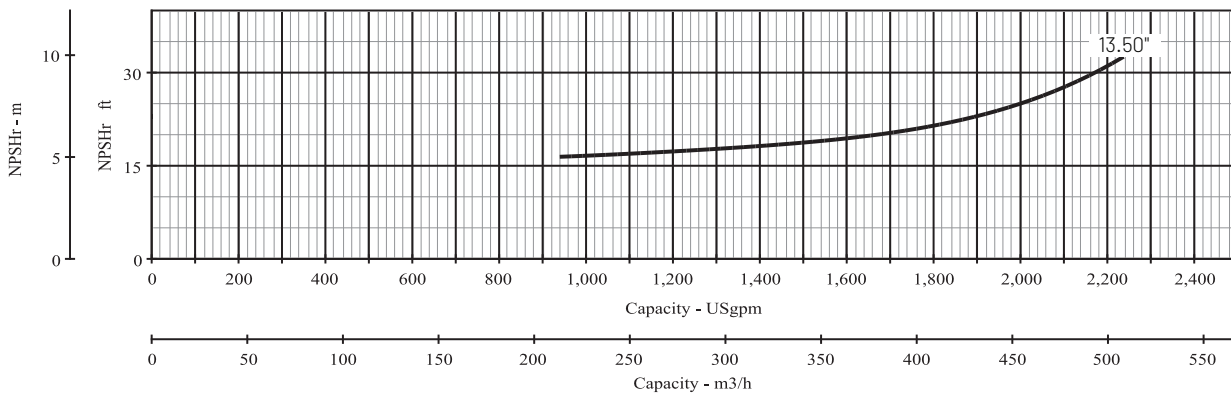
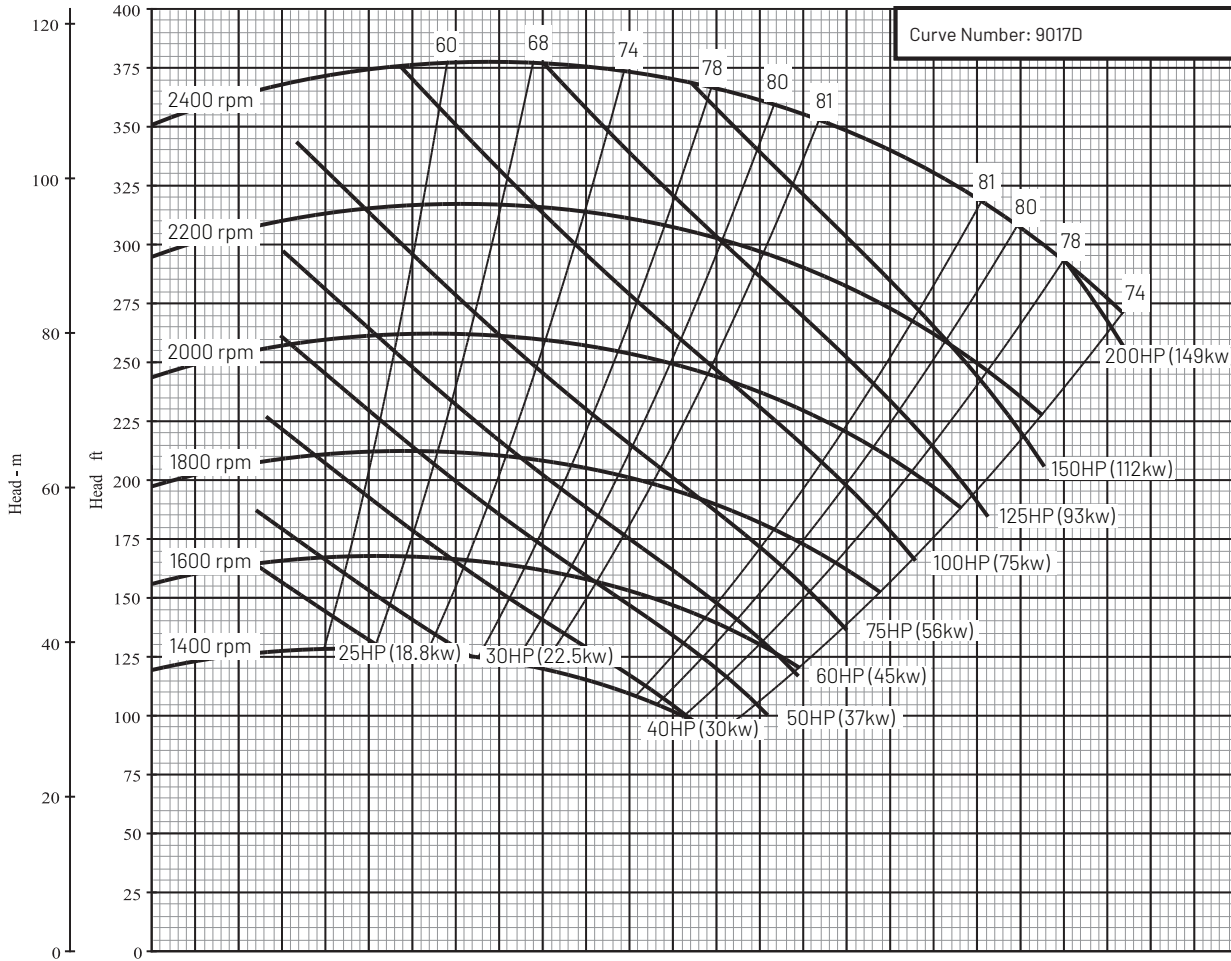
Series Name: B4J_BHH

Pump Size: 4 x 6 x 13 BHH

Department of Energy Requirements	
PEI _{CL}	0.96
Model	B4JBHH
Imp. Dia. (in.)	13.50

Available Configurations	
CCMD	B4JPBHH
Frame	B4JRBHH
SAE	

Curve Conditions	
Nominal RPM	VARIOUS
Maximum Working Pressure	266 PSI (18 BAR)
Based on Fresh Water @ F	68 (20 C)



This product as sold in U.S. is regulated by 10 CFR Parts 429 and 431.

293 Wright Street | Delavan | WI 53115 | www.BerkeleyPumps.com

For a detailed list of where Pentair trademarks are registered, please visit www.pentair.com/en/registrations.html. Pentair trademarks and logos are owned by Pentair PLC, or its affiliates. Third party registered and unregistered trademarks and logos are the property of their respective owners. Because we are continuously improving our products and services, Pentair reserves the right to change specifications without prior notice. Pentair is an equal opportunity employer. BK13094 DOE (2/15/20) © 2020 Pentair plc. All Rights Reserved.