

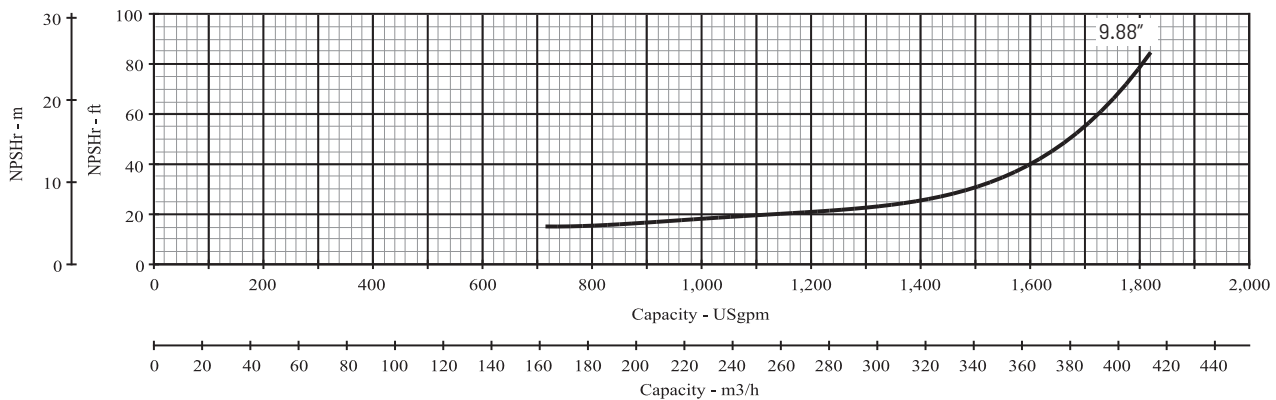
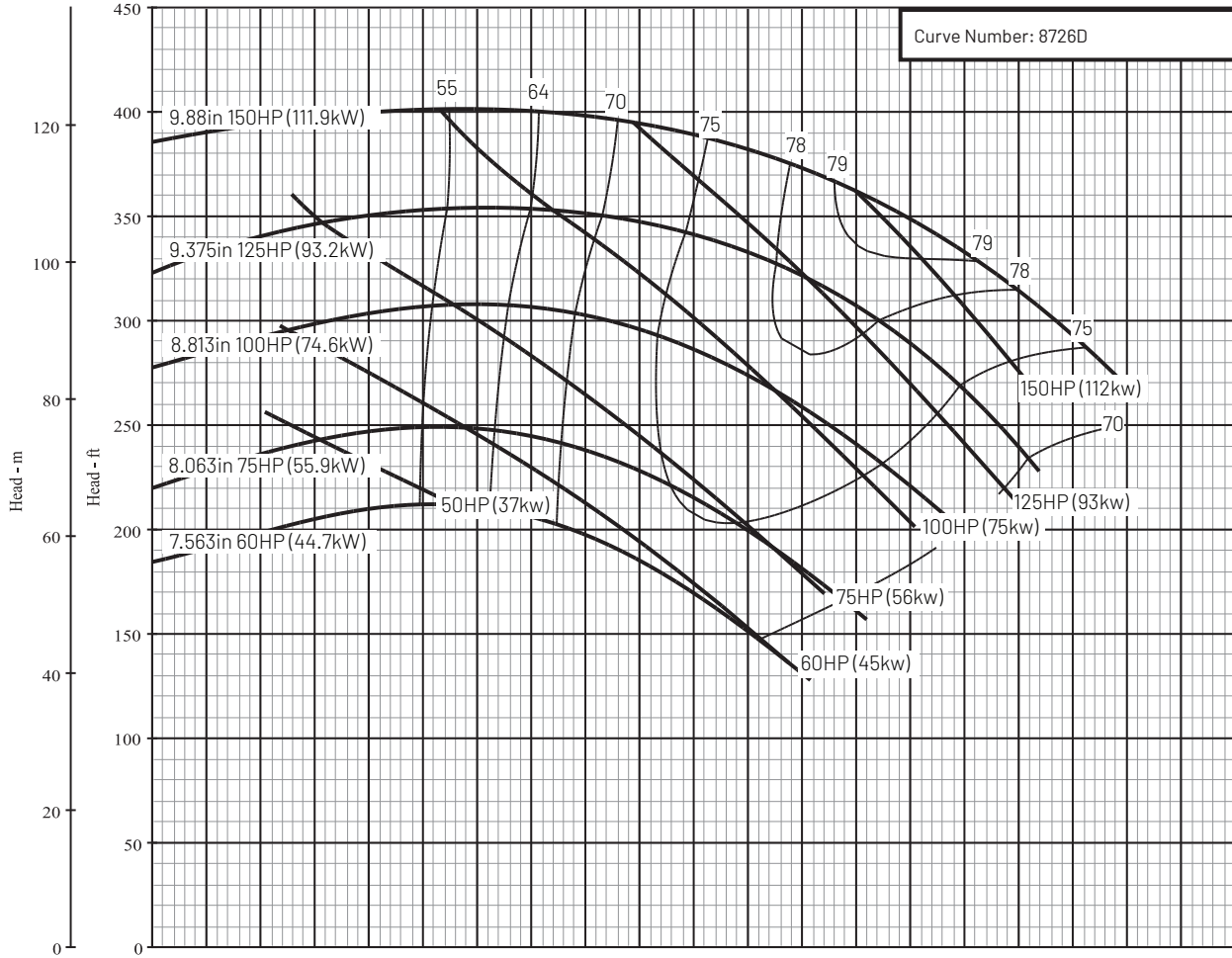
Series Name: B5E_BM

Pump Size: 5 x 6 x 10 BM

| Department of Energy Requirements | |
|-----------------------------------|-------|
| PE _{icl} | 0.95 |
| Model | B5EBM |
| | |
| Imp. Dia. (in.) | 9.88 |

| Available Configurations | |
|--------------------------|--------|
| CCMD | B5EPBM |
| Frame | |
| SAE | |

| Curve Conditions | |
|--------------------------|------------------|
| Nominal RPM | 3550 |
| Maximum Working Pressure | 266 PSI (18 BAR) |
| Based on Fresh Water @ F | 68 (20 C) |



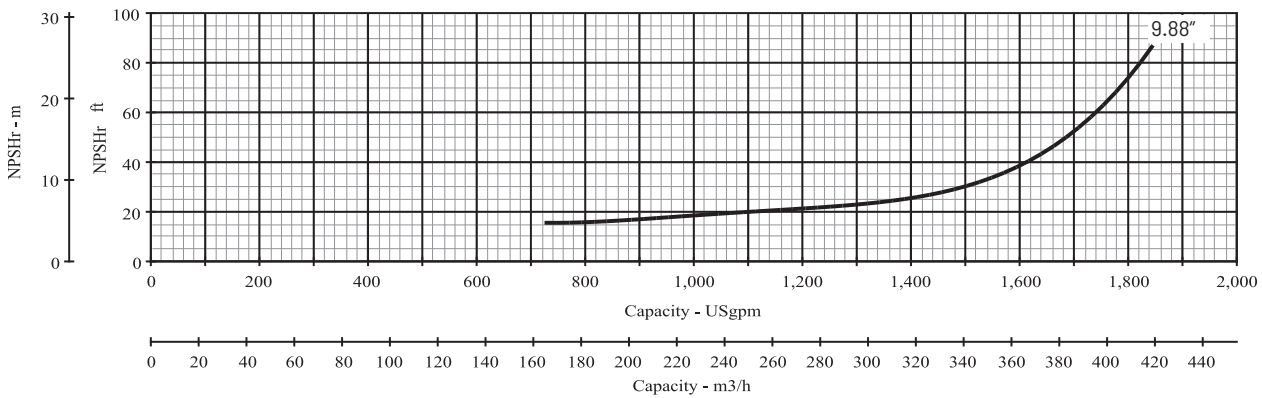
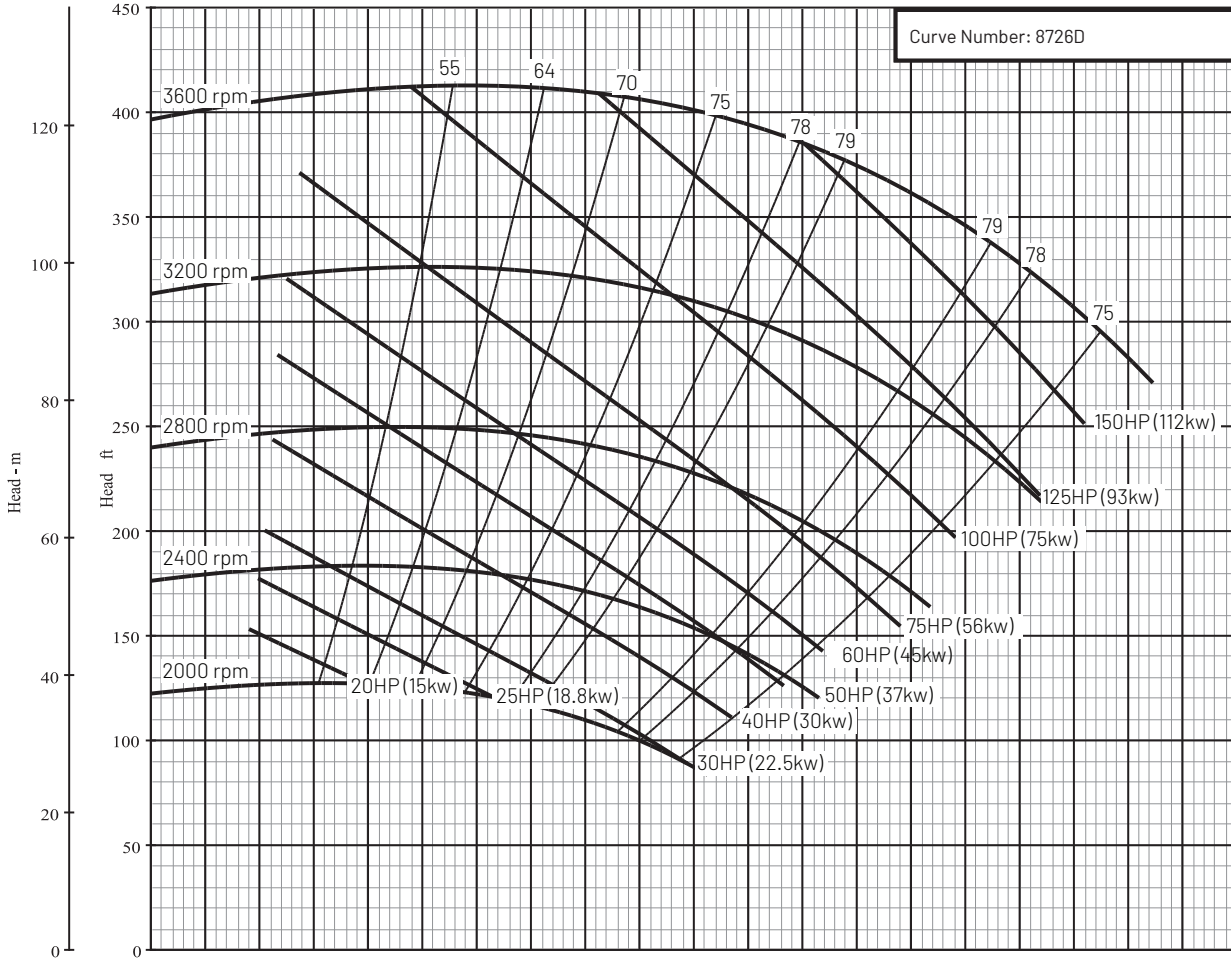
Series Name: B5E_BM

Pump Size: 5 x 6 x 10 BM

| Department of Energy Requirements | |
|-----------------------------------|-------|
| PEI _{CL} | 0.95 |
| Model | B5EBM |
| | |
| Imp. Dia. (in.) | 9.88 |

| Available Configurations | |
|--------------------------|--------|
| CCMD | B5EPBM |
| Frame | |
| SAE | |

| Curve Conditions | |
|--------------------------|------------------|
| Nominal RPM | VARIOUS |
| Maximum Working Pressure | 266 PSI (18 BAR) |
| Based on Fresh Water @ F | 68 (20 C) |



This product as sold in U.S. is regulated by 10 CFR Parts 429 and 431.

293 Wright Street | Delavan | WI 53115 | www.BerkeleyPumps.com

For a detailed list of where Pentair trademarks are registered, please visit www.pentair.com/en/registrations.html. Pentair trademarks and logos are owned by Pentair PLC, or its affiliates. Third party registered and unregistered trademarks and logos are the property of their respective owners. Because we are continuously improving our products and services, Pentair reserves the right to change specifications without prior notice. Pentair is an equal opportunity employer. BK1BK13095D0E (2/15/20) © 2020 Pentair plc. All Rights Reserved.