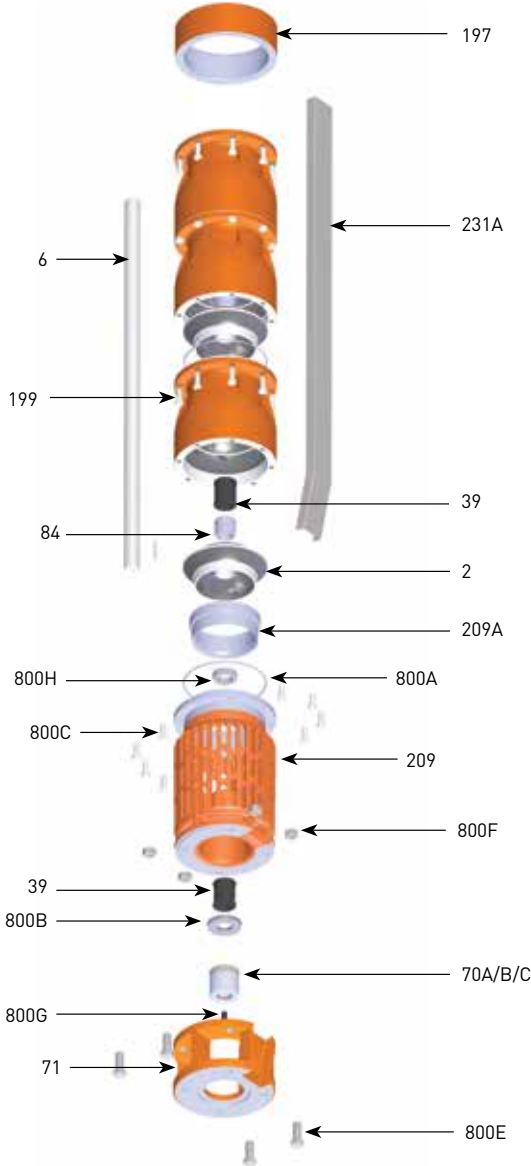


# BERKELEY® 10TMH SERIES

## 1750 GPM, 60HZ, NPT, 8" & 10" Motors

Section	ST-10TMH
Page	1.0
Date	March 21, 2018
Supersedes	New



1750 Series			
Item Number	Part Number	Description	Req. Qty.
2	See table 2	Impeller	1/Stg
6	See table 3	Shaft	1
39	M16146	Bearing, Rubber	1/Stg
70A	M16764	Coupling, 8" motor (Inc key)	1
70B	M16765	Coupling, 10", "A" Register (Inc key)	1
70C	M16766	Coupling, 10", "B" Register (Inc key)	1
71	M16762	8" motor adapter	1
71	M16763	10" motor adapter	1
84	LV2275004 3080F	Collet	1/Stg
199	M16726	Bowl, see table 1 for assembly	1
197	M16720N	Discharge	1
209	M16761	Screen*	1
209A	M16972	Suction Insert	1
231A	See table 3	Cable Guard	1
800A	HYD6E136 9923F	O-Ring	1/stg
800B	M14791	Thrust Washers	3
800C	S23623	CAPSCREW,HEX HD 1/2-13NC X 1-1/2L 303SS	8/Stg
Not Shown	M09653PNR	Nameplate	1
Not Shown	M10199	Rivet	2
800E	11F7A0203 0005F	Screw-Cap 3/4-10X 2-1/4 UNC HEX 18-8 SST	4
800F	11F25A10008 0005F	NUT-HEX 3/4-10 UNC Regular 18-8 SST	4
800G	11FM8C0112 0005F	Cap Screw 1/2-13 X 1-1/4 UNC S Ocket Hea	1
800H	M16730	Sand Slinger 10TMH 316SS	1
Not Shown	S23982	Sand Collar setscrews (2 req per slinger)	4
Not Shown	See table 3	Cable guard clamp	1
Not Shown	M13517	Direction Arrow	1

\*Reqs qty 1 of HYD6E136 9923F O-Ring

TABLE 1 - Additional Staging		
Item Number	Part Number	Description
39A	M16146	Rubber Bearing
	M17017	Vesconite Bearing
	M16144	Bronze Bearing
199	B87067	Bowl Assy, rubber
84	LV2275004 3080F	Collet
800A	HYD6E136 9923F	O-Ring

TABLE 2 - Impellers		
Item Number	Part Number	Description
2	M16736	Impeller 10VT900/10TMH1750 Mach SS 8.00 Trim A
	M17018	Impeller 10TMH-1750 Mach SS 7.78-OD Trim B
	M17019	Impeller 10TMH-1750 Mach SS 7.51-OD Trim C
	M17020	Impeller 10TMH -1750 Mach 7.23-OD Trim D

TABLE 3												
Motor	Series	HP/kw	Stages	Trim				BM#	Shaft PN	Cable Guard	Cable Guard* Hardware Kit	Assembled Pump Length
				"A"	"B"	"C"	"D"					
8" Motor	10TMH75-1750	75/55.9kW	1				1	B87132	M17028	M17035	B87157	34.58 in / 878 mm
	10TMH100-1750	100/74.6kW	1		1			B87133	M17028	M17035		34.58 in / 878 mm
	10TMH125-1750	125/93.2kW	1	1				B87134	M17028	M17035		34.58 in / 878 mm
	10TMH150-1750	150/111.9W	2				2	B87135	M17029	M17037		44.58 in / 1132 mm
10" Mtr, "A" Register	10TMH175-1750	175/130.5kW	2			2		B87136	M17029	M17044	B87158	45.58 in / 1158mm
	10TMH200-1750	200/149.1kW	2		2			B87138	M17029	M17044		45.58 in / 1158mm
10" Mtr, "B" Register	10TMH175-1750	175/130.5kW	2			2		B87137	M17029	M17044		45.58 in / 1158mm
	10TMH200-1750	200/149.1kW	2		2			B87139	M17029	M17044		45.58 in / 1158mm

\* Not shown



293 WRIGHT STREET, DELAVAN, WI 53115 www.BerkeleyPumps.com PH: 888-237-5353 ORDERS FAX: 800-321-8793  
Because we are continuously improving our products and services, Pentair reserves the right to change specifications without prior notice.