

CONTROLLERS



NXT2

- ◆ Network up to 8 valves for multi-system control
- ◆ Improved display (OLED) allows for easy viewing
- ◆ Multivalve system settings can be pushed from one controller to expedite setup



XTR2

- ◆ Premium touch screen LCD display
- ◆ Upgraded interface
- ◆ Customizable programming
- ◆ Field programmable



SXT

- ◆ Large LCD display
- ◆ Programmable time clock or metered
- ◆ Applicable to filter or softener systems



ELECTROMECHANICAL

- ◆ Quick access to all internal components
- ◆ 24V motor
- ◆ Applicable to filter or softener systems



TESTED and CERTIFIED by the WQA to NSF/ANSI Standard 61 Section 8 Material Safety Only.



TESTED and CERTIFIED by the WQA to NSF/ANSI Standard 372 for Lead Free Compliance.



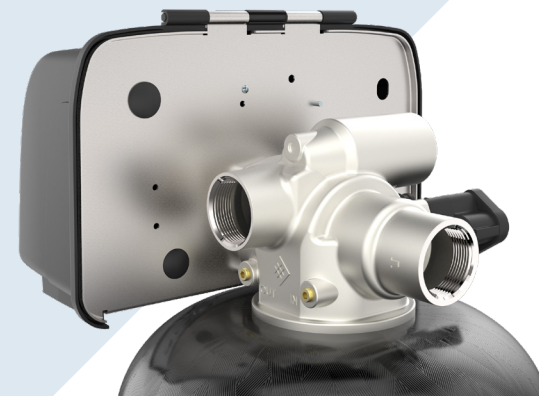
13845 BISHOPS DR., SUITE 200, BROOKFIELD, WI 53005 USA
P: 262.238.4400 | WATERPURIFICATION.PENTAIR.COM
CUSTOMER CARE: 800.279.9404 | tech-support@pentair.com
© 2018 Pentair Residential Filtration, LLC. All rights reserved.
§For a detailed list of where Pentair trademarks are registered, please visit waterpurification.pentair.com/brands. Pentair trademarks and logos are owned by Pentair plc or its affiliates. Third party registered and unregistered trademarks and logos are the property of their respective owners.

4005272 Rev B SE18



FLECK
2815 COMMERCIAL VALVE

BUILT TO LAST



MADE IN THE
USA
OF FOREIGN & DOMESTIC PARTS

PRODUCT OVERVIEW

The 1-1/2" downflow Pentair Fleck 2815 commercial valve is available with no hard water bypass option, and designed specifically to support many of the current Pentair Fleck timers and controllers.

◆ LEAD-FREE CONSTRUCTION

316 stainless steel valve body has higher purity and resistance to corrosion.

◆ FLEXIBILITY

Designed to perform on most commercial softener sizes and use the same Pentair powerhead and controller options.

◆ EASY SERVICE

Improved piston and seal and spacer cartridge for better service access.

FEATURES

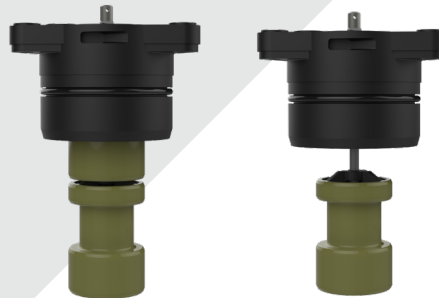
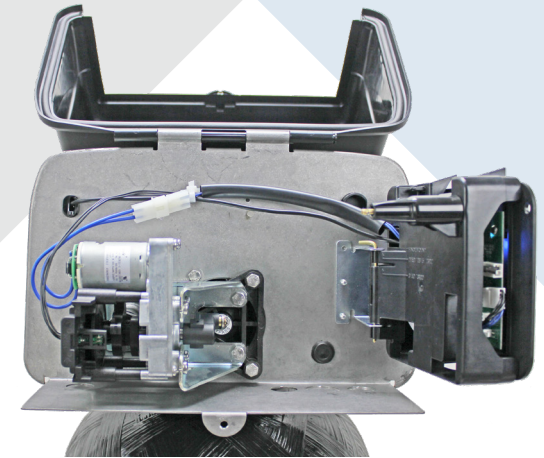


INNOVATIVE DESIGN

- ◆ Top hinge cover for easy servicing and storage of tools and replacement parts
- ◆ Hinged drive motor and controller does not need to be removed for servicing piston and seals
- ◆ One piece seal and spacer cartridge for easy installation

DURABLE CONSTRUCTION

- ◆ Corrosion resistant stainless steel valve body means the Fleck 2815 can be used in extreme conditions and environments
- ◆ NSF/ANSI Standard 372 certified to meet lead-free regulatory compliance
- ◆ Seals and components are hot water rated up to 150°F, meaning no additional components needed



no bypass

bypass

PEAK PERFORMANCE

- ◆ Continuous service flow and backwash rates of 70 GPM
- ◆ High backwash capability accommodates tanks up to 36" in diameter and filters up to 30" in diameter (based on 10 GPM/ft²)
- ◆ Hydraulically-balanced composite piston for durable sealing and performance

PISTON	BYPASS	NO BYPASS
Continuous (15 psi drop)	70 GPM	70 GPM
Peak (25 psi drop)	90 GPM	90 GPM
CV (flow @ 1 psi drop)	18 GPM	18 GPM
Max Backwash (25 psi drop)	70 GPM	70 GPM