

2 x 2-1/2 x 12A SERIES 420

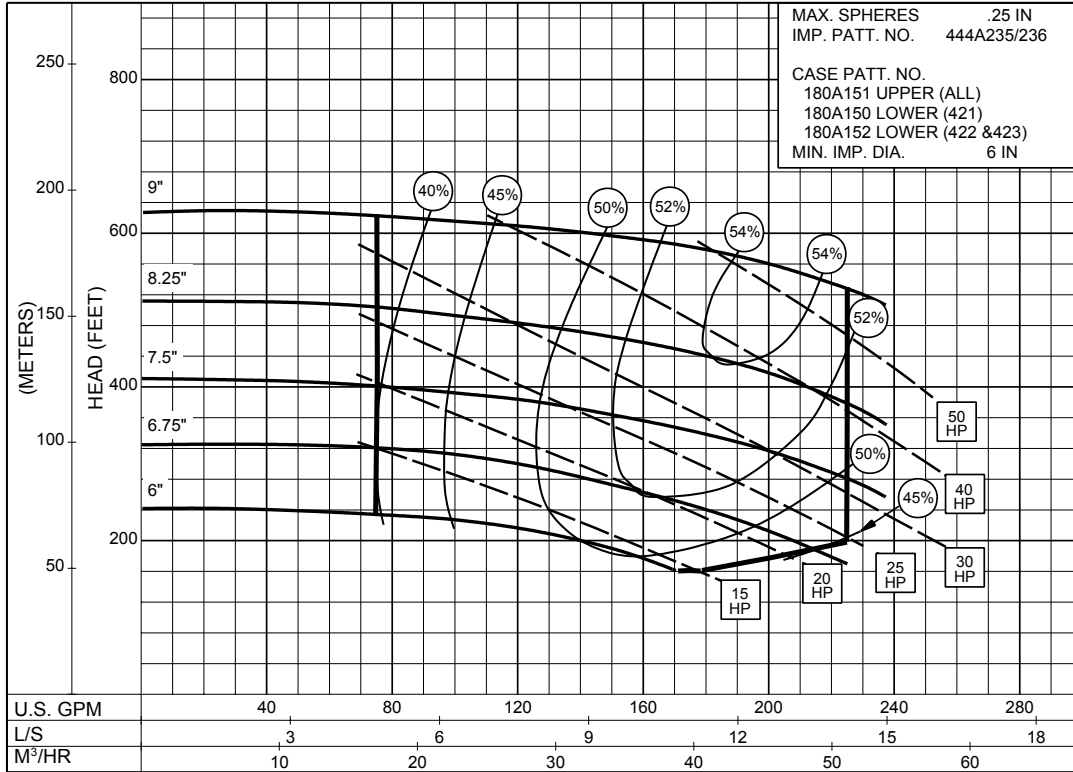
ENCLOSED IMPELLER

SIZE : 2x2-1/2x12A

TYPE : 420

IMPELLER : Enclosed

R. P. M. : 3500



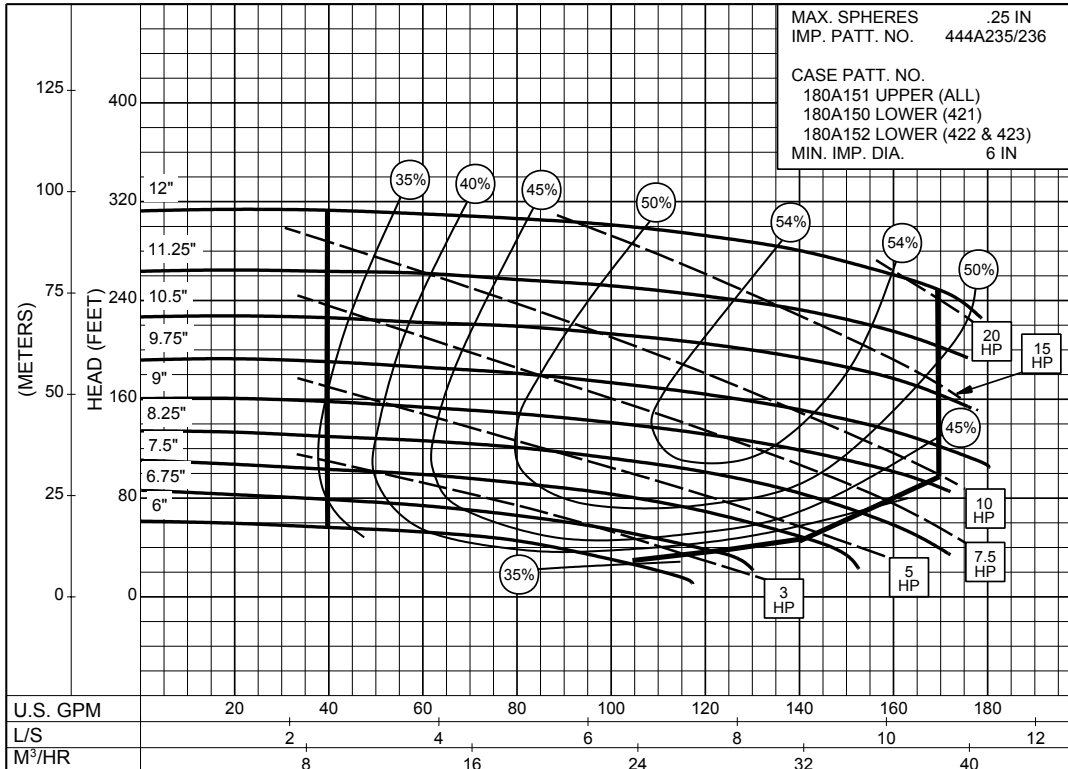
3500
R.P.M

SIZE : 2x2-1/2x12A

TYPE : 420

IMPELLER : Enclosed

R. P. M. : 1750

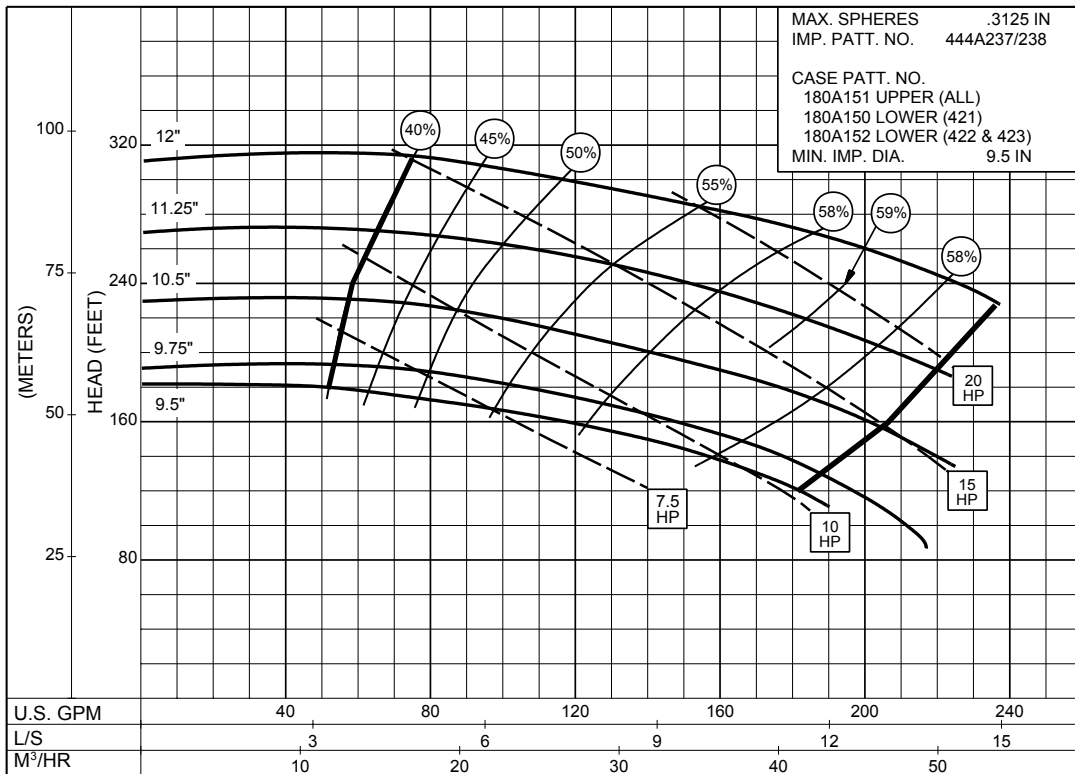


1750
R.P.M

ENCLOSED IMPELLER

Supersedes Section 420 Page 402
 Dated January 1968

SIZE : 2x2-1/2x12B TYPE : 420 IMPELLER : Enclosed R. P. M. : 1750



**1750
R.P.M**

1PC-115895

2-1/2 x 3 x 12A SERIES 420

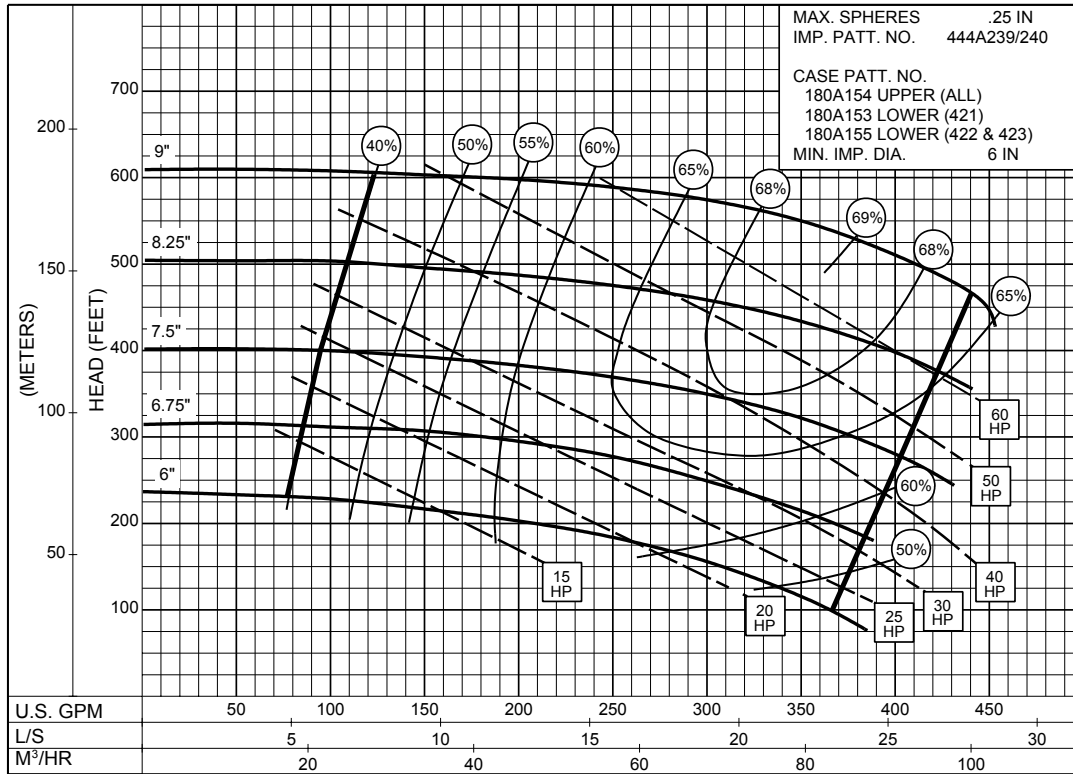
ENCLOSED IMPELLER

SIZE : 2-1/2x3x12A

TYPE : 420

IMPELLER : Enclosed

R. P. M. : 3500



1PC-115896

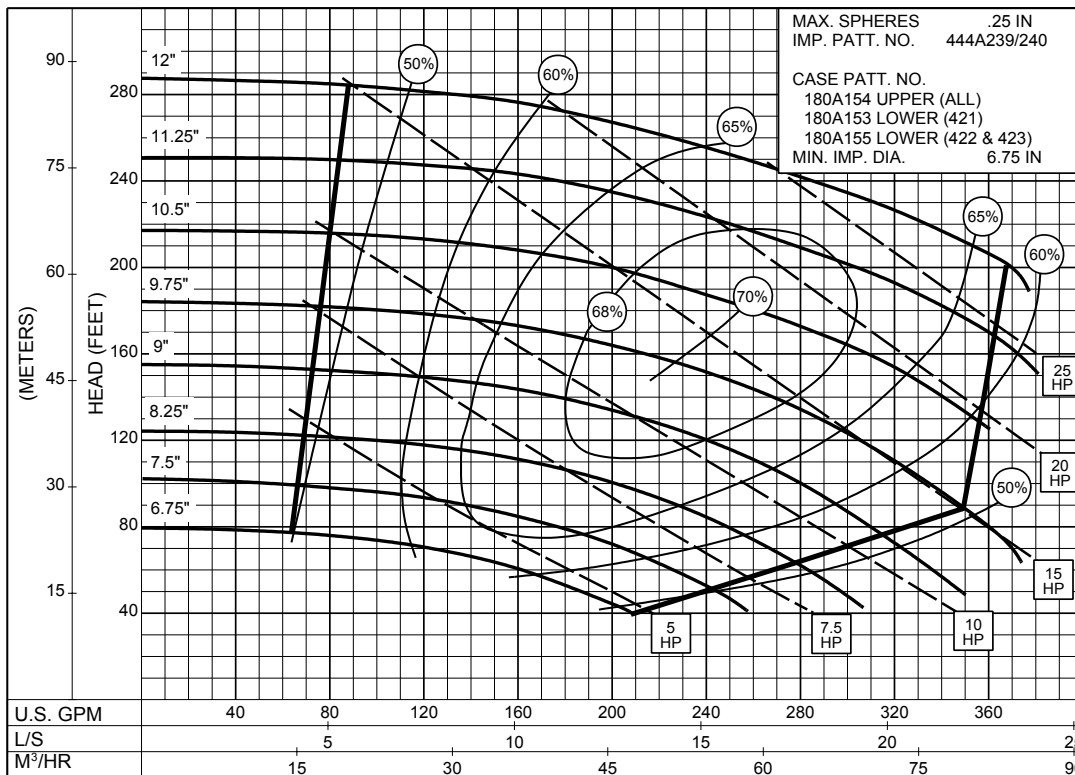


SIZE : 2-1/2x3x12A

TYPE : 420

IMPELLER : Enclosed

R. P. M. : 1750



1PC-115897



ENCLOSED IMPELLER

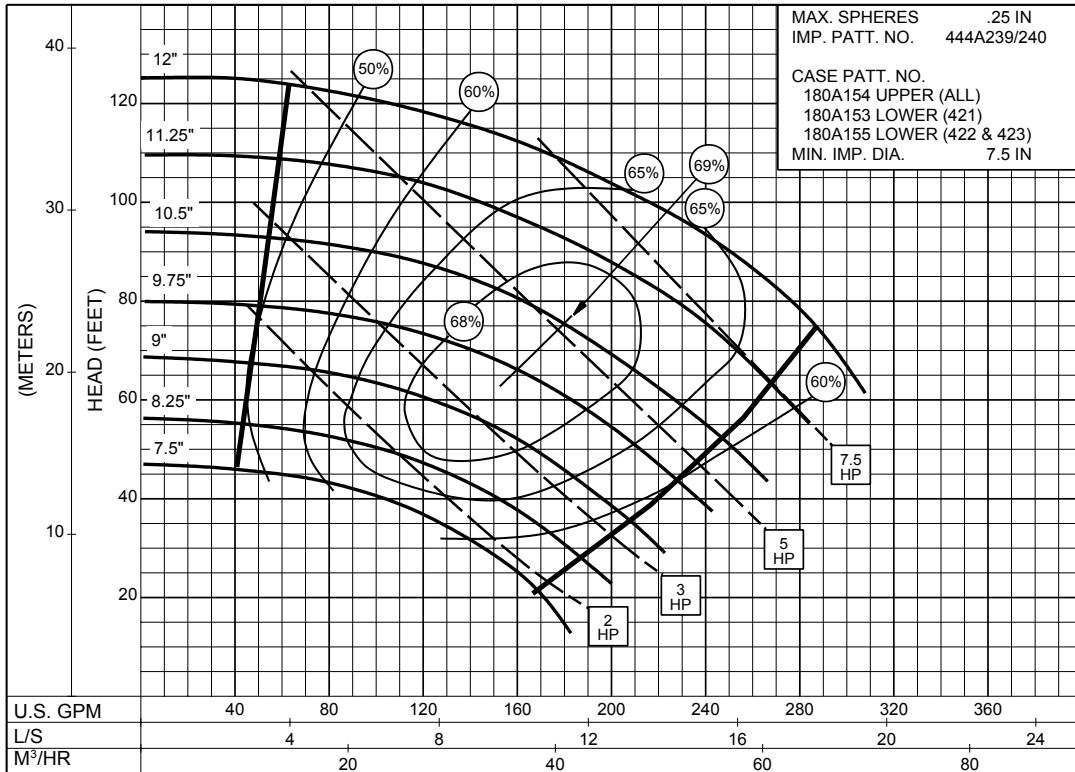
SIZE : 2-1/2x3x12A

TYPE : 420

IMPELLER : Enclosed

R. P. M. : 1150

MAX. SPHERES .25 IN
 IMP. PATT. NO. 444A239/240
 CASE PATT. NO.
 180A154 UPPER (ALL)
 180A153 LOWER (421)
 180A155 LOWER (422 & 423)
 MIN. IMP. DIA. 7.5 IN



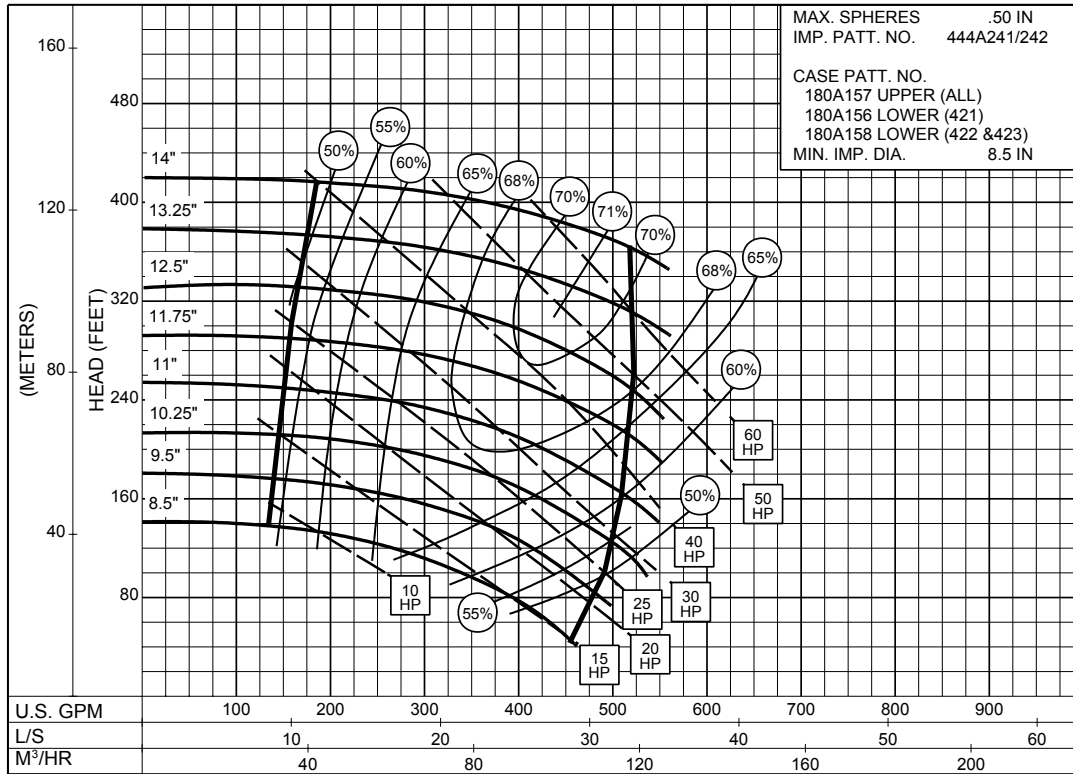
**1150
R.P.M**

1PC-115898

3 x 4 x 14A SERIES 420

ENCLOSED IMPELLER

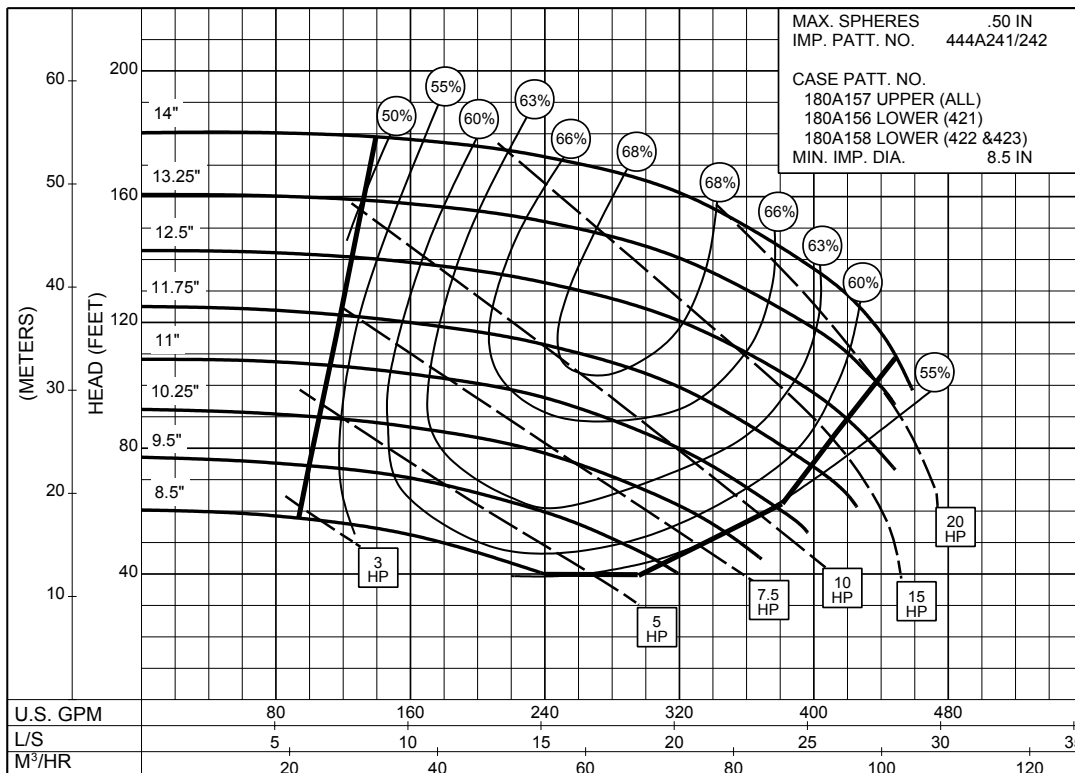
SIZE : 3x4x14A TYPE : 420 IMPELLER : Enclosed R. P. M. : 1750



1PC-115899

1750
R.P.M

SIZE : 3x4x14A TYPE : 420 IMPELLER : Enclosed R. P. M. : 1150



1PC-115900

1150
R.P.M

3 x 4 x 14B SERIES 420

ENCLOSED IMPELLER

SIZE : 3x4x14B

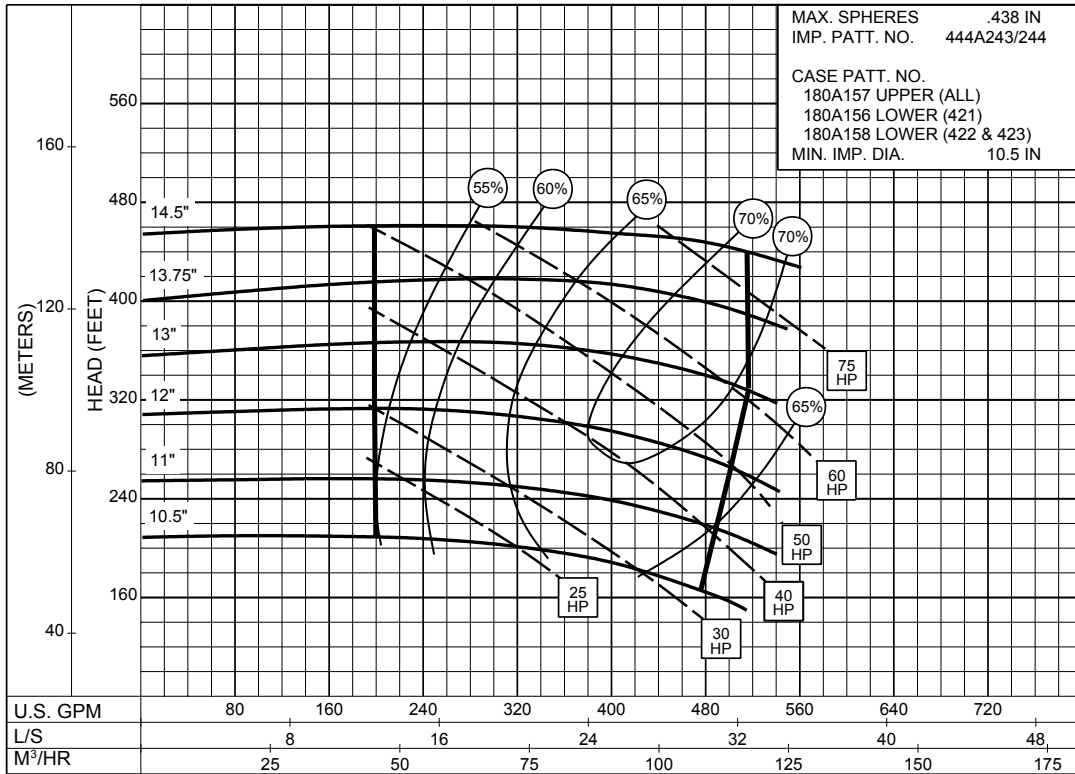
TYPE : 420

IMPELLER : Enclosed

R. P. M. : 1750

MAX. SPHERES .438 IN
 IMP. PATT. NO. 444A243/244
 CASE PATT. NO.
 180A157 UPPER (ALL)
 180A156 LOWER (421)
 180A158 LOWER (422 & 423)
 MIN. IMP. DIA. 10.5 IN

1750
R.P.M

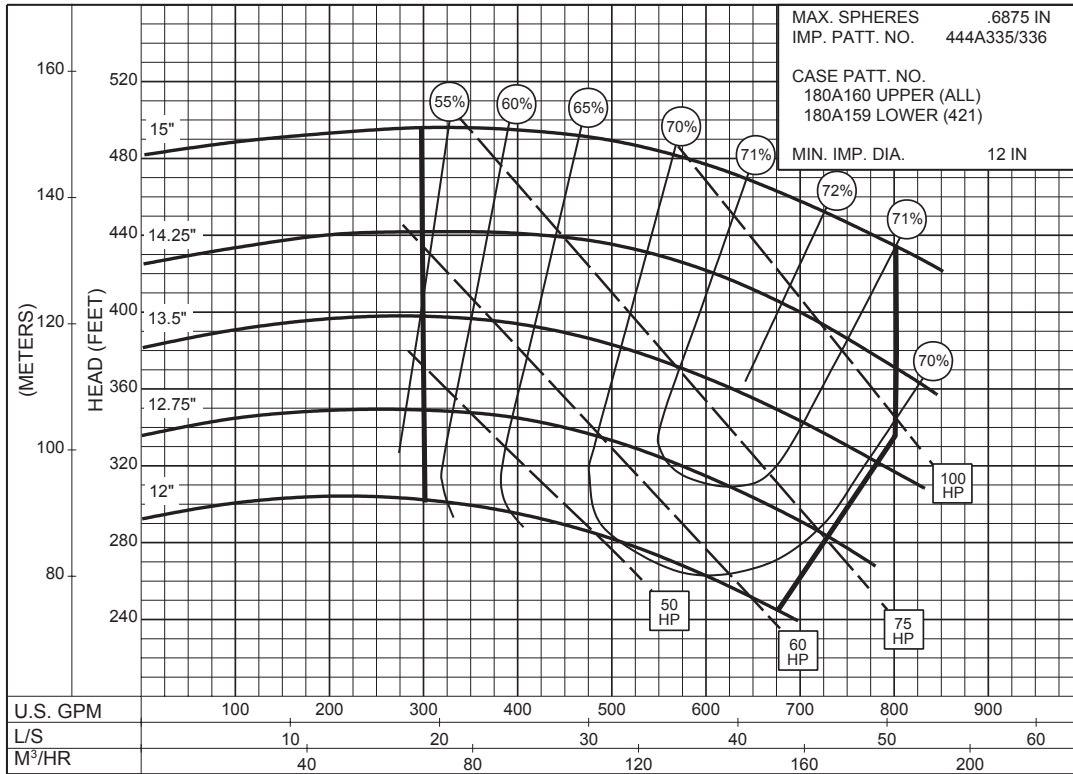


1PC-118277

4 x 5 x 15 SERIES 420

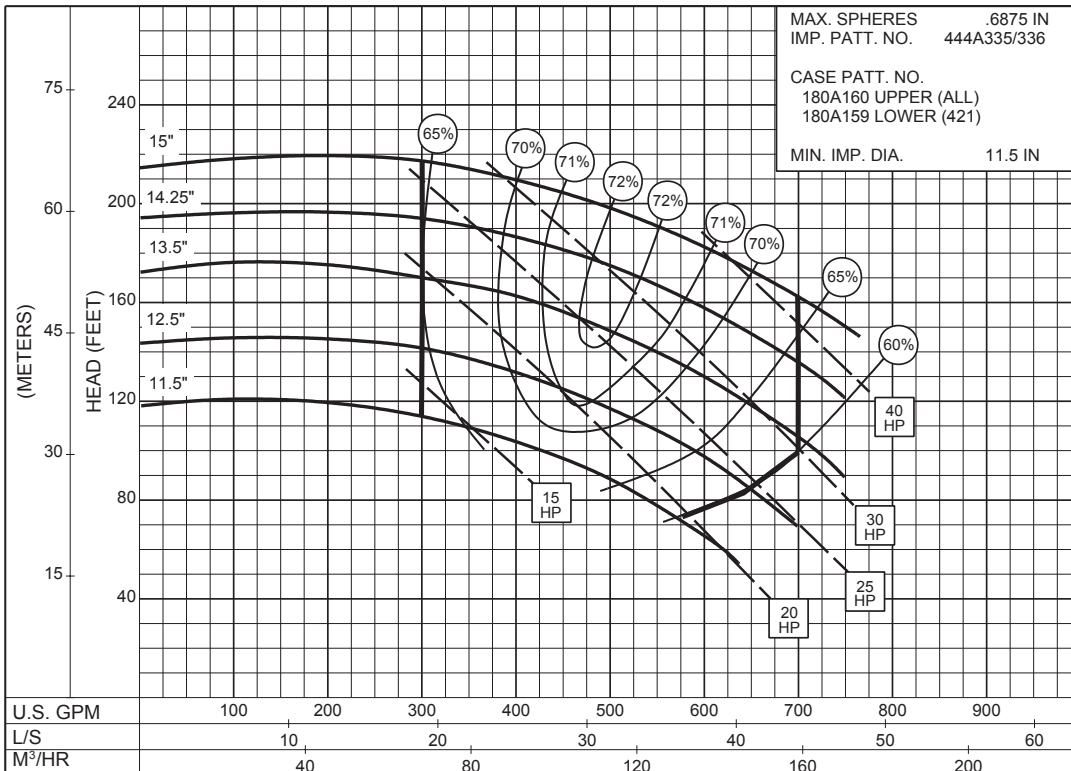
ENCLOSED IMPELLER

SIZE : 4x5x15 TYPE : 420 IMPELLER : Enclosed R. P. M. : 1750



1PC-115902

SIZE : 4x5x15 TYPE : 420 IMPELLER : Enclosed R. P. M. : 1150

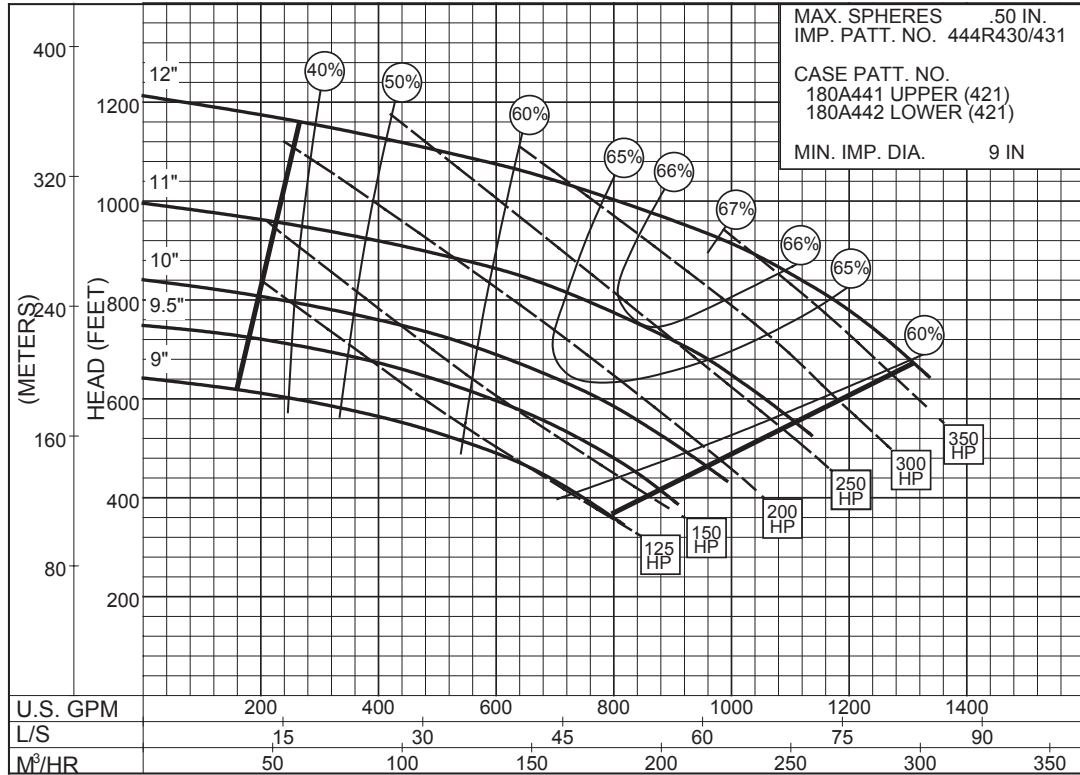


1PC-115903

5 x 5 x 12 SERIES 420

ENCLOSED IMPELLER

SIZE : 5x5x12 TYPE : 420 IMPELLER : Enclosed R. P. M. : 3550



MAX. SPHERES .50 IN.
IMP. PATT. NO. 444R430/431

CASE PATT. NO.
180A441 UPPER (421)
180A442 LOWER (421)

MIN. IMP. DIA. 9 IN

3550
R.P.M

PC-175888

5 x 6 x 15 SERIES 420

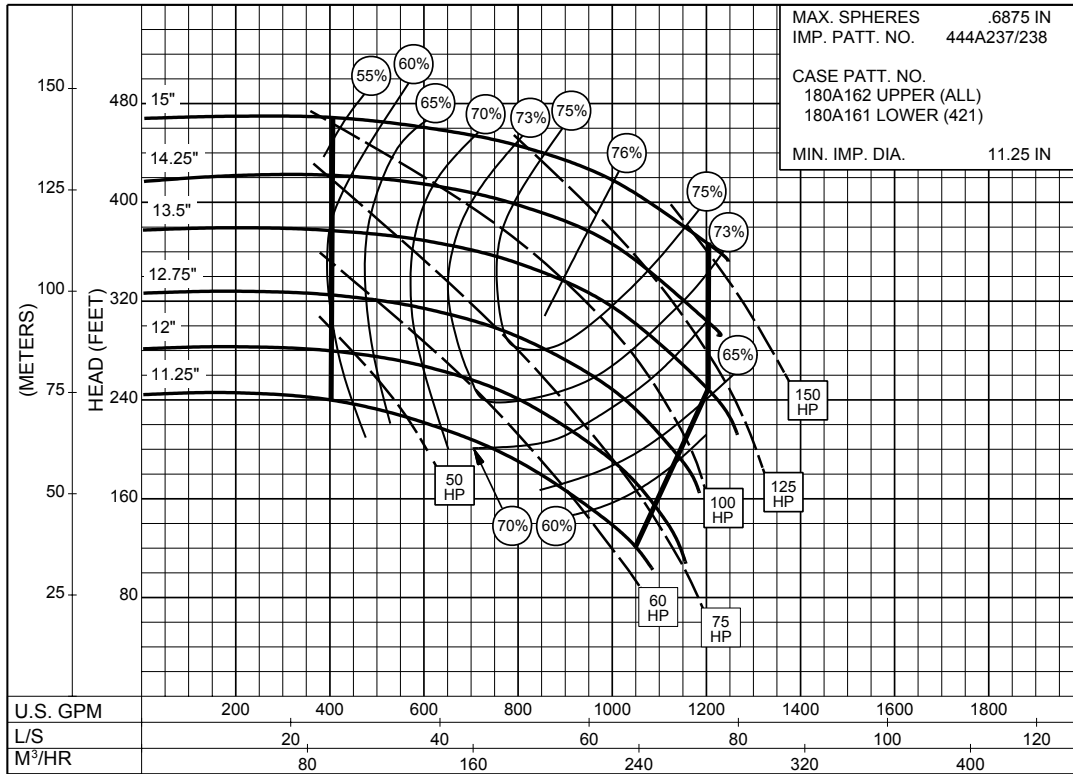
ENCLOSED IMPELLER

SIZE : 5x6x15

TYPE : 420

IMPELLER : Enclosed

R. P. M. : 1750



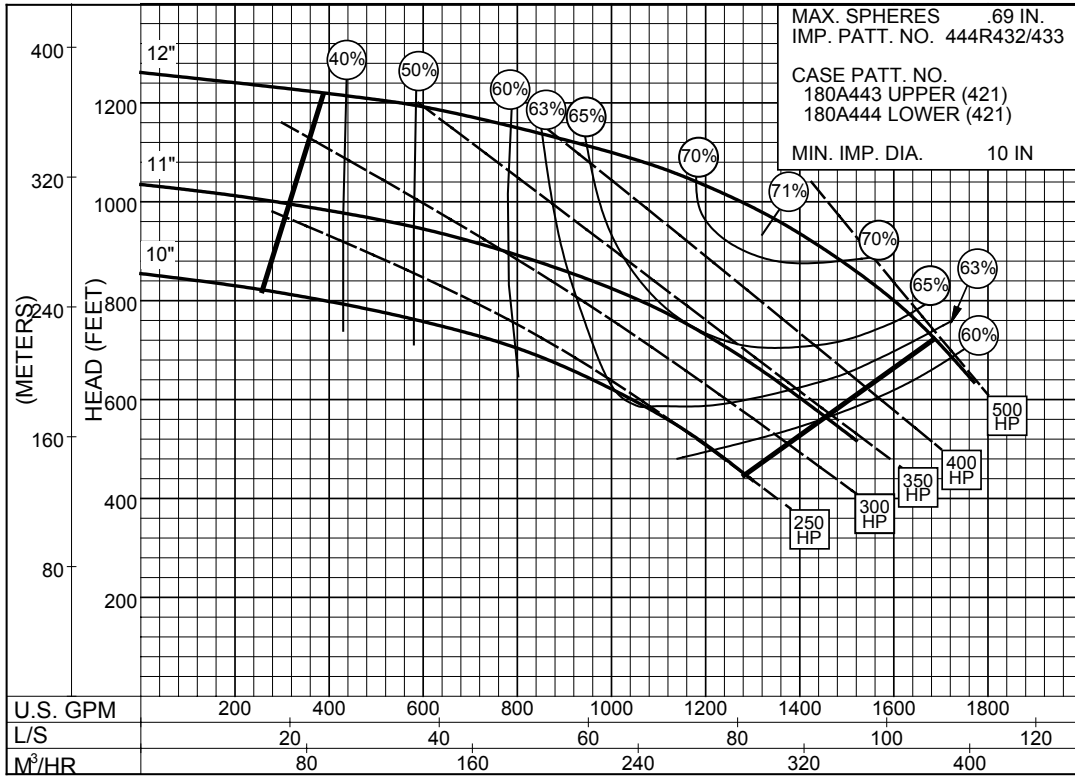
1750
R.P.M

1PC-115904

6 x 6 x 12 SERIES 420

ENCLOSED IMPELLER

SIZE : 6x6x12 TYPE : 420 IMPELLER : Enclosed R. P. M. : 3550



3550
R.P.M

PC-175890

6 x 8 x 17A SERIES 420

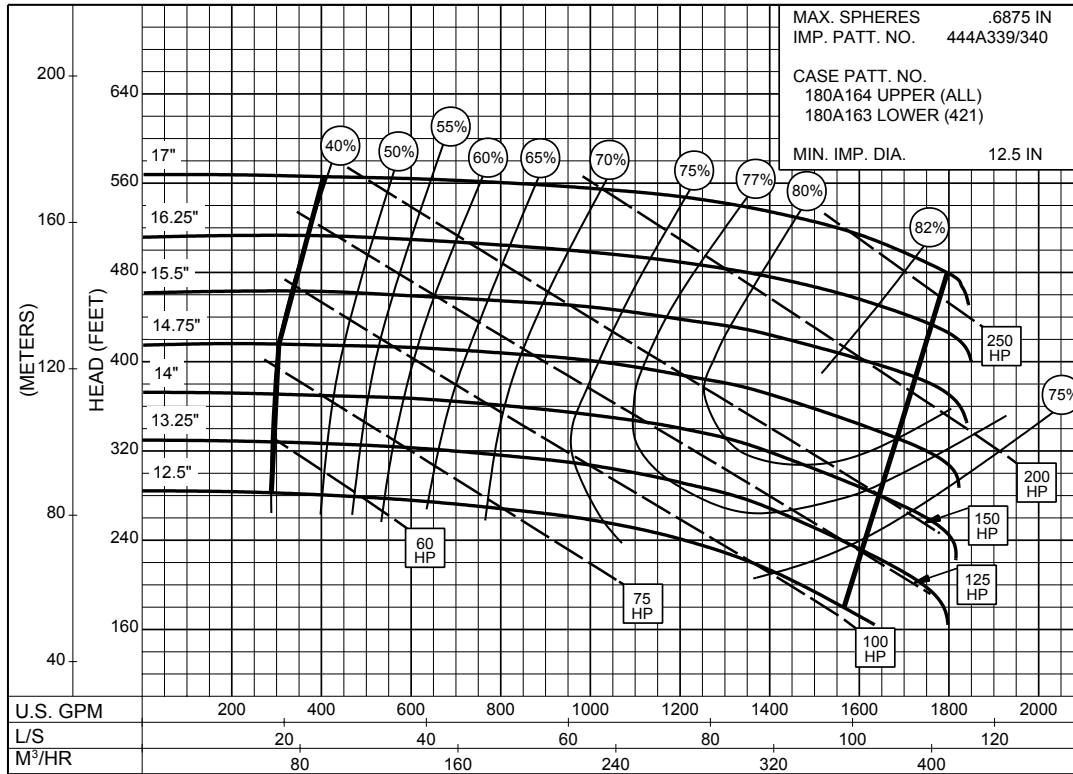
ENCLOSED IMPELLER

SIZE : 6x8x17A

TYPE : 420

IMPELLER : Enclosed

R. P. M. : 1750



6 x 8 x 17B SERIES 420

ENCLOSED IMPELLER

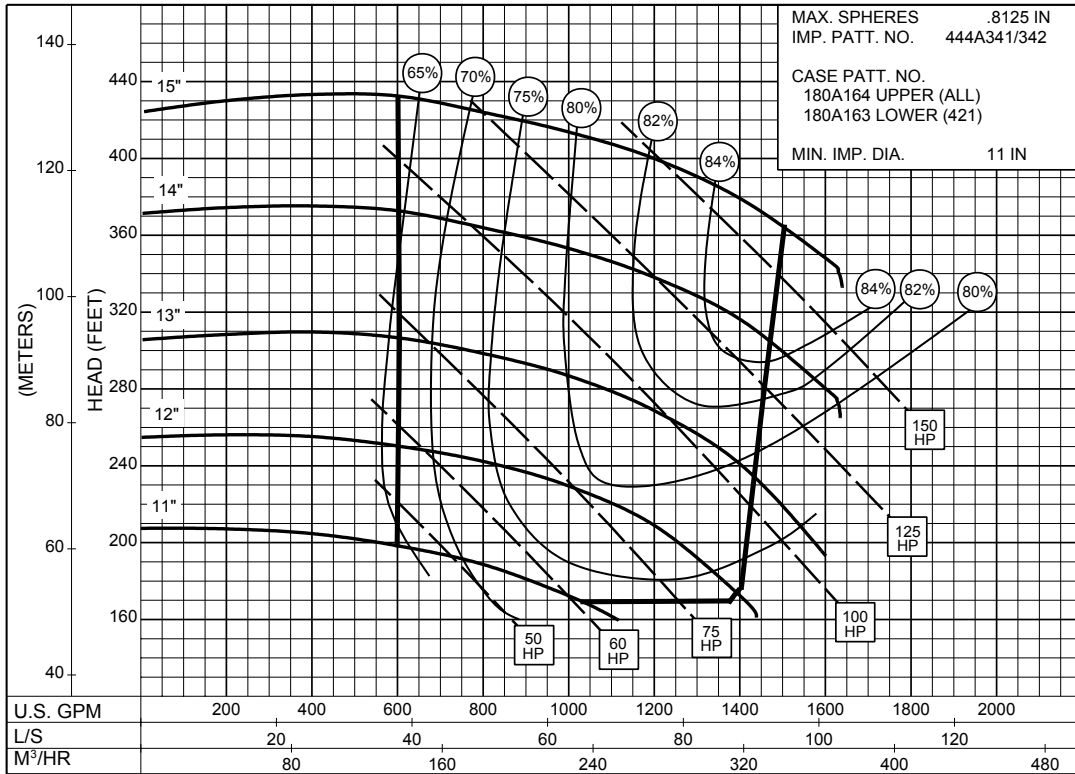
SIZE : 6x8x17B

TYPE : 420

IMPELLER : Enclosed

R. P. M. : 1750

MAX. SPHERES .8125 IN
 IMP. PATT. NO. 444A341/342
 CASE PATT. NO.
 180A164 UPPER (ALL)
 180A163 LOWER (421)
 MIN. IMP. DIA. 11 IN



IPC-115906

1750
R.P.M

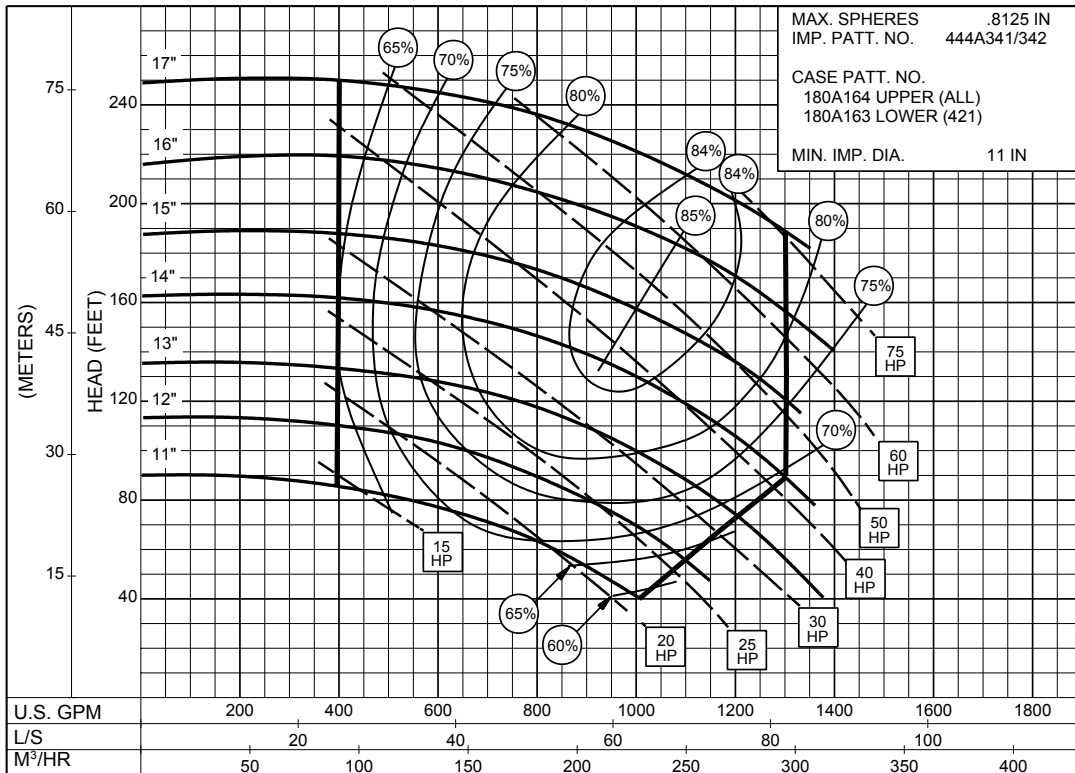
SIZE : 6x8x17B

TYPE : 420

IMPELLER : Enclosed

R. P. M. : 1150

MAX. SPHERES .8125 IN
 IMP. PATT. NO. 444A341/342
 CASE PATT. NO.
 180A164 UPPER (ALL)
 180A163 LOWER (421)
 MIN. IMP. DIA. 11 IN



IPC-115907

1150
R.P.M