

2 x 2-1/2 x 12A SERIES 420

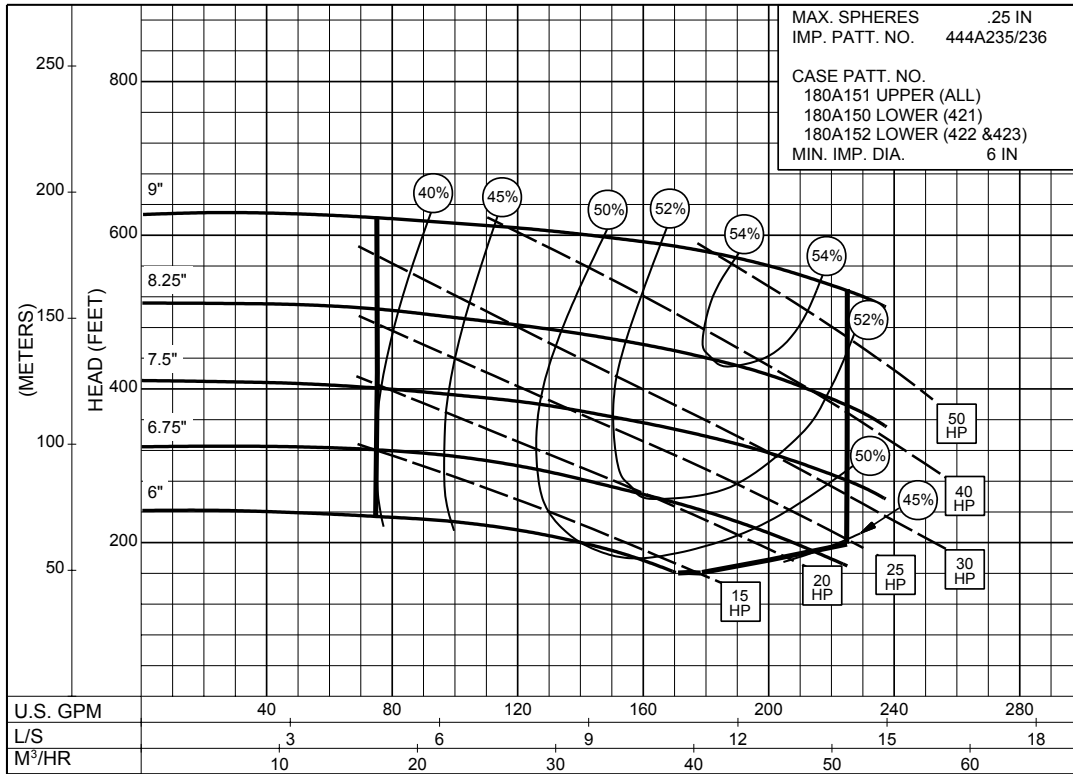
ENCLOSED IMPELLER

SIZE : 2x2-1/2x12A

TYPE : 420

IMPELLER : Enclosed

R. P. M. : 3500



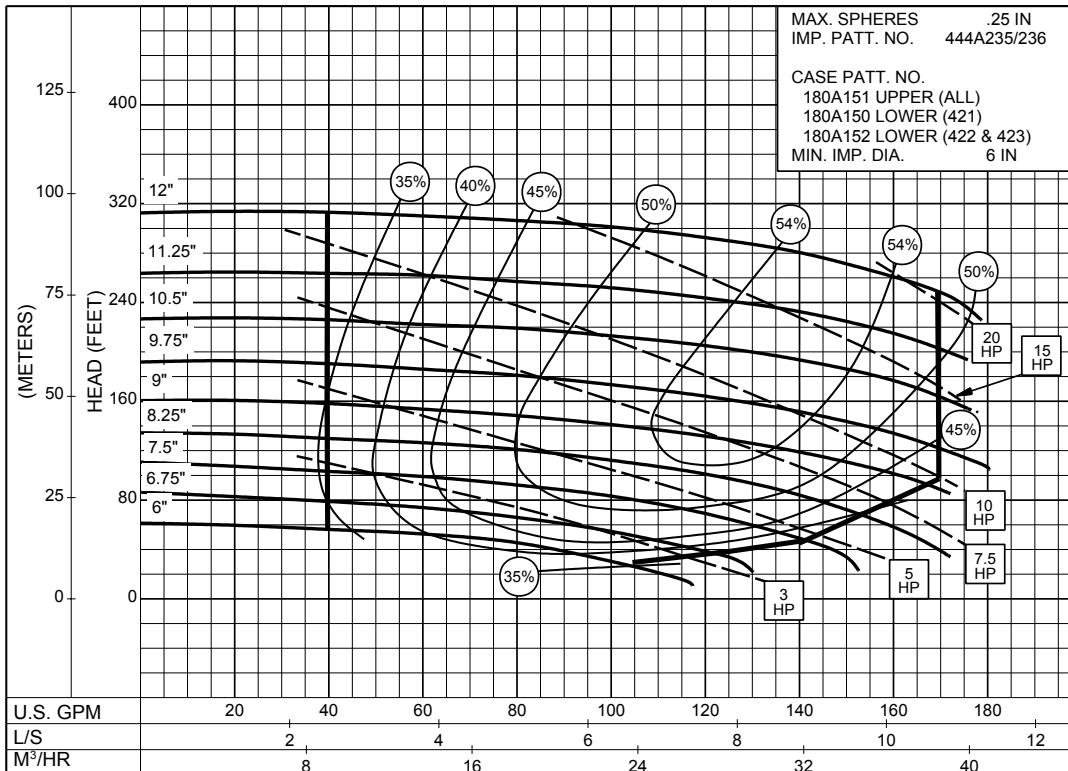
3500
R.P.M

SIZE : 2x2-1/2x12A

TYPE : 420

IMPELLER : Enclosed

R. P. M. : 1750



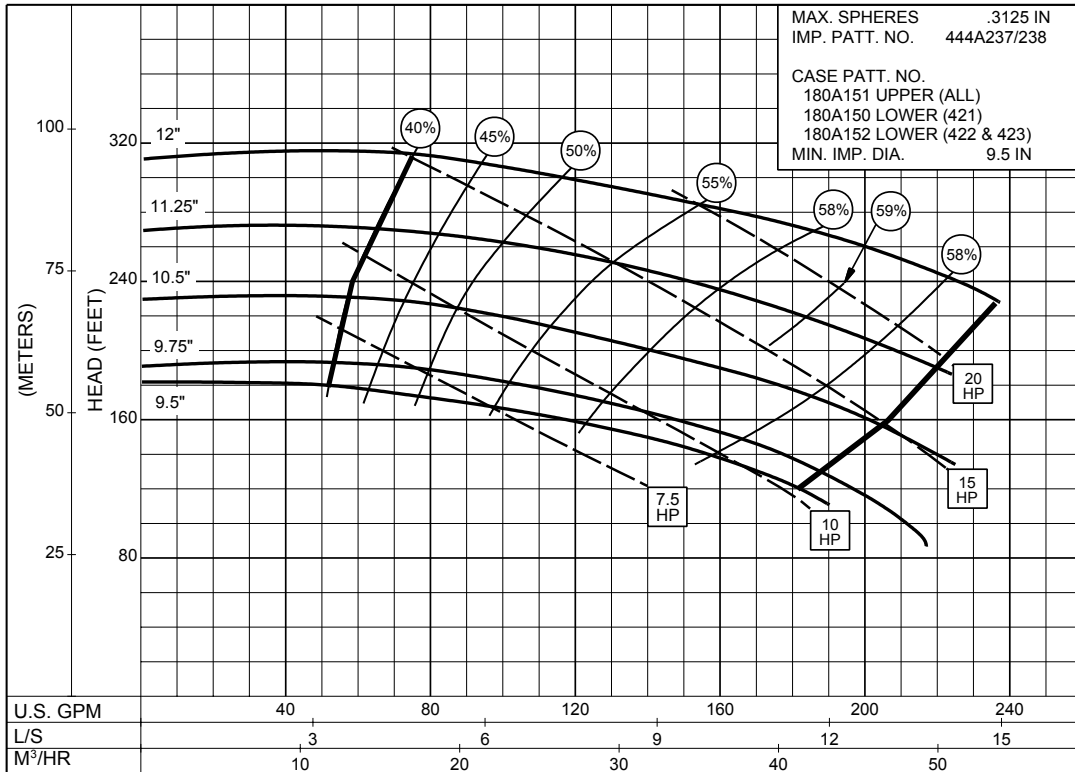
1750
R.P.M

ENCLOSED IMPELLER

Supersedes Section 420 Page 402
 Dated January 1968

SIZE : 2x2-1/2x12B TYPE : 420 IMPELLER : Enclosed R. P. M. : 1750

MAX. SPHERES .3125 IN
 IMP. PATT. NO. 444A237/238
 CASE PATT. NO.
 180A151 UPPER (ALL)
 180A150 LOWER (421)
 180A152 LOWER (422 & 423)
 MIN. IMP. DIA. 9.5 IN



**1750
R.P.M**

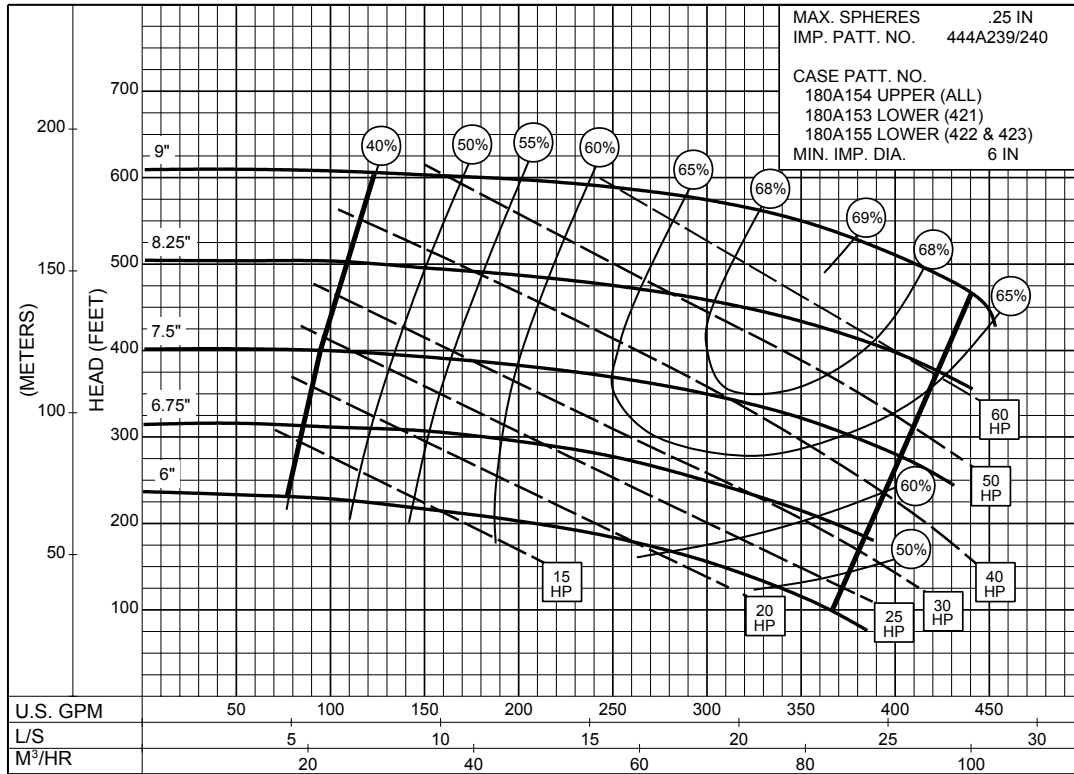
1PC-115895

SIZE : 2-1/2x3x12A

TYPE : 420

IMPELLER : Enclosed

R. P. M. : 3500



1PC-115896

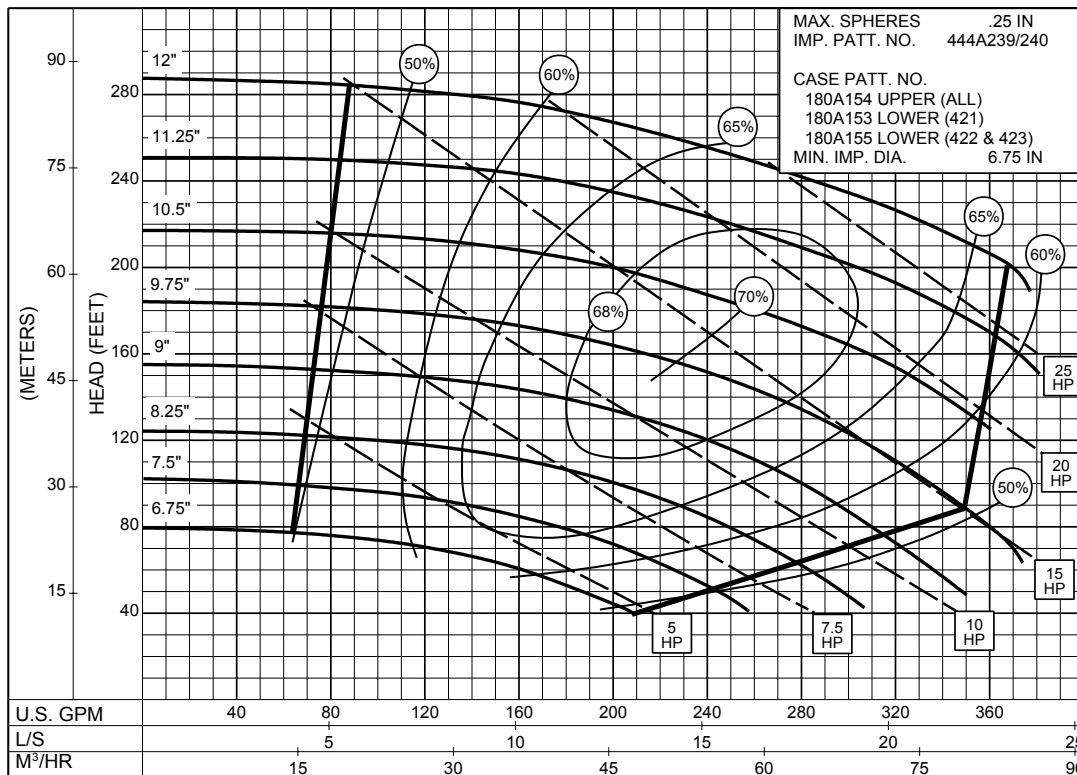


SIZE : 2-1/2x3x12A

TYPE : 420

IMPELLER : Enclosed

R. P. M. : 1750



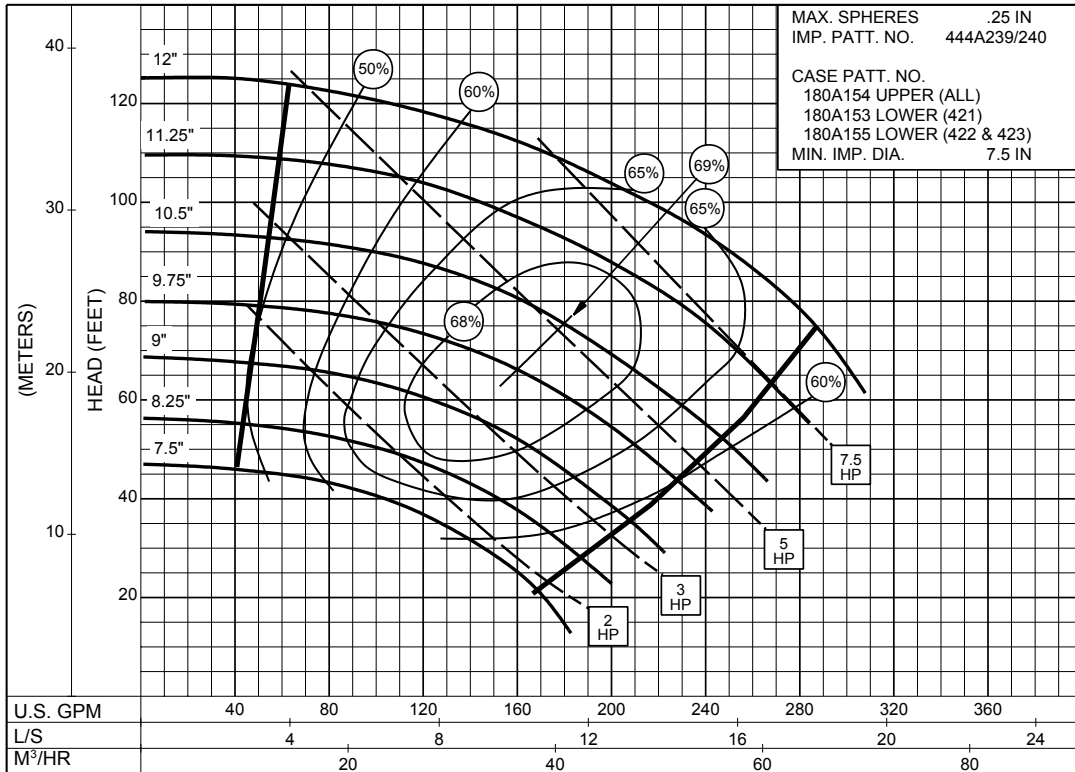
1PC-115897



ENCLOSED IMPELLER

Supersedes Section 420 Page 404
 Dated January 1968

SIZE : 2-1/2x3x12A TYPE : 420 IMPELLER : Enclosed R. P. M. : 1150



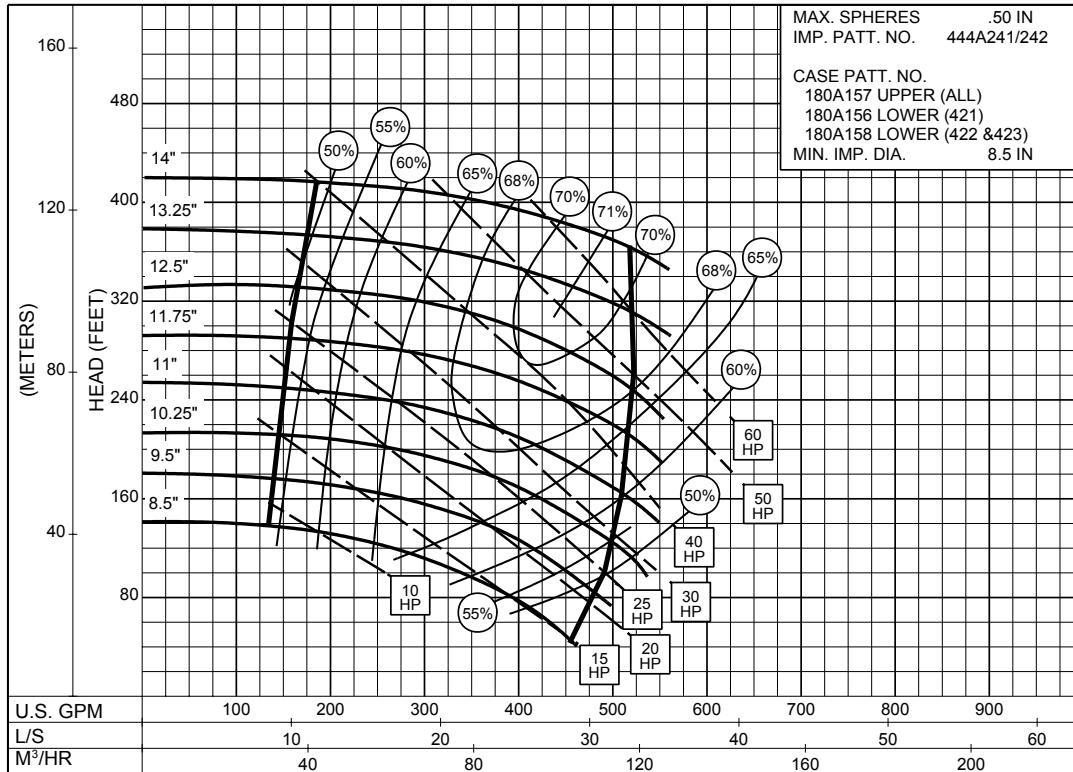
1150
R.P.M

1PC-115898

3 x 4 x 14A SERIES 420

ENCLOSED IMPELLER

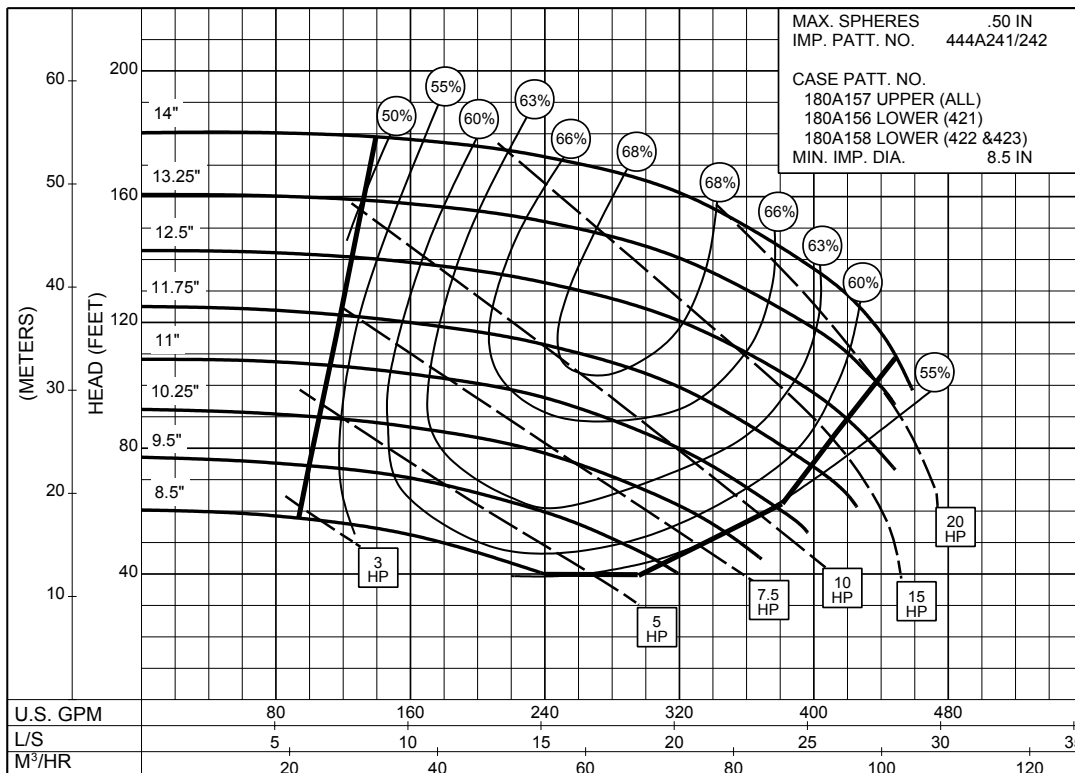
SIZE : 3x4x14A TYPE : 420 IMPELLER : Enclosed R. P. M. : 1750



1PC-115899

1750
R.P.M

SIZE : 3x4x14A TYPE : 420 IMPELLER : Enclosed R. P. M. : 1150



1PC-115900

1150
R.P.M

3 x 4 x 14B SERIES 420

ENCLOSED IMPELLER

SIZE : 3x4x14B

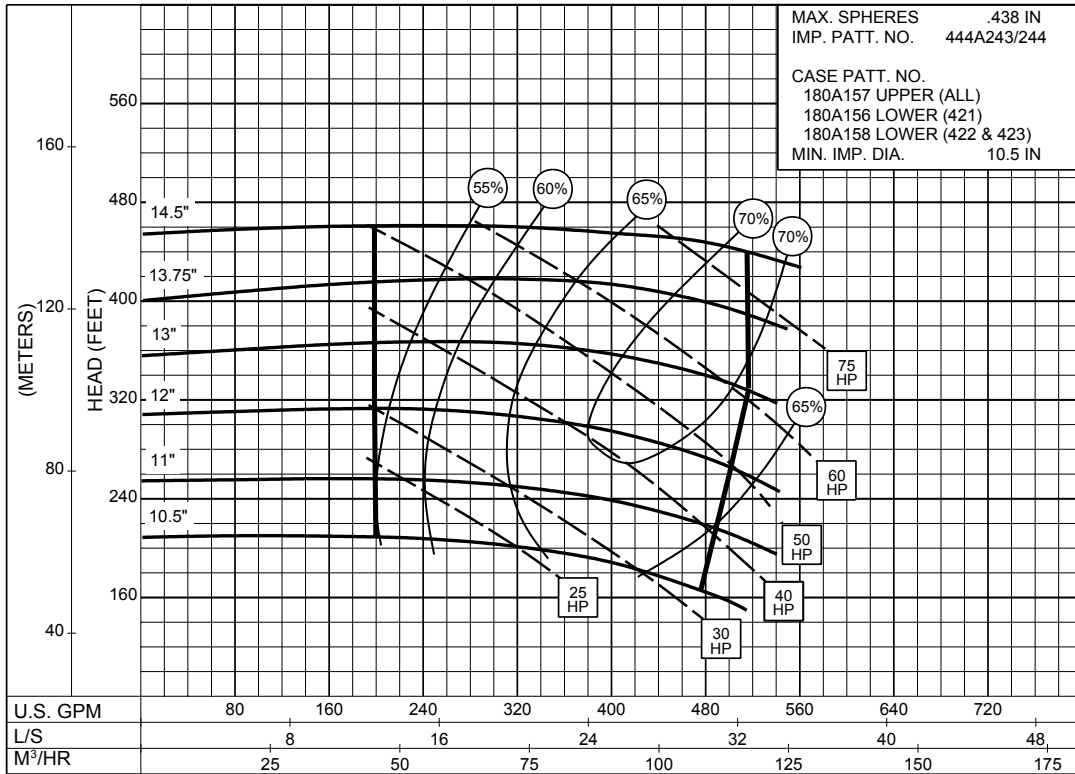
TYPE : 420

IMPELLER : Enclosed

R. P. M. : 1750

MAX. SPHERES .438 IN
 IMP. PATT. NO. 444A243/244
 CASE PATT. NO.
 180A157 UPPER (ALL)
 180A156 LOWER (421)
 180A158 LOWER (422 & 423)
 MIN. IMP. DIA. 10.5 IN

1750
R.P.M

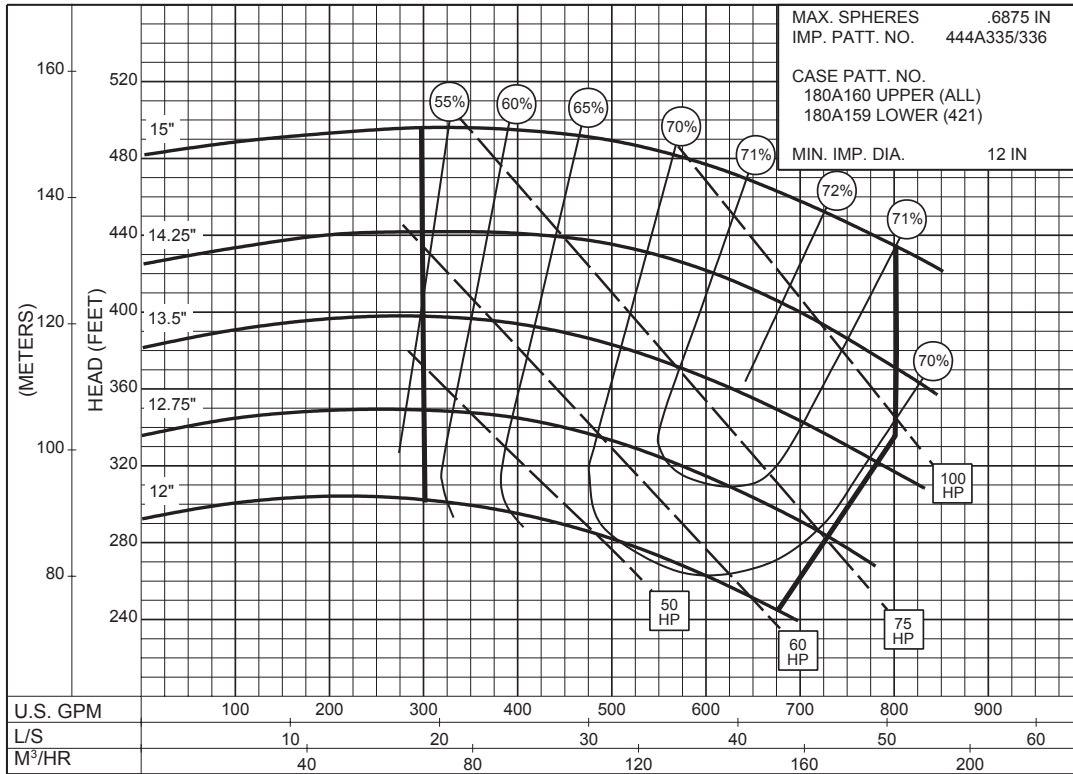


1PC-118277

4 x 5 x 15 SERIES 420

ENCLOSED IMPELLER

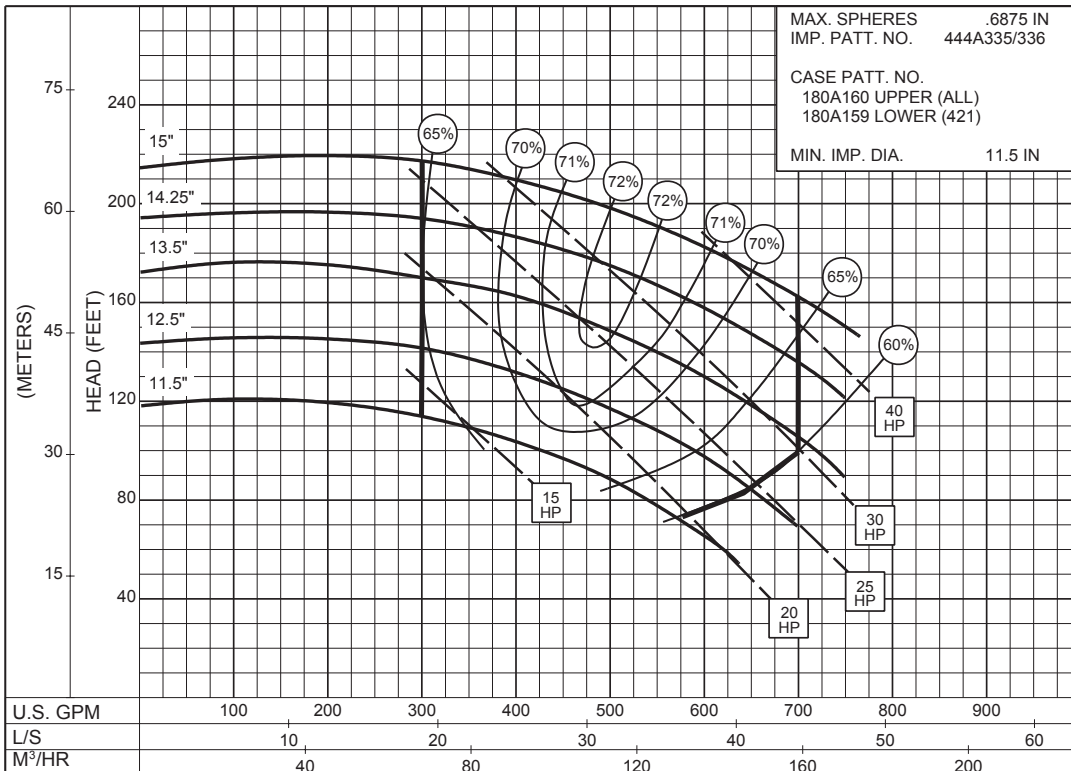
SIZE : 4x5x15 TYPE : 420 IMPELLER : Enclosed R. P. M. : 1750



1PC-115902

1750
R.P.M

SIZE : 4x5x15 TYPE : 420 IMPELLER : Enclosed R. P. M. : 1150



1PC-115903

1150
R.P.M

5 x 5 x 12 SERIES 420

ENCLOSED IMPELLER

SIZE : 5x5x12

TYPE : 420

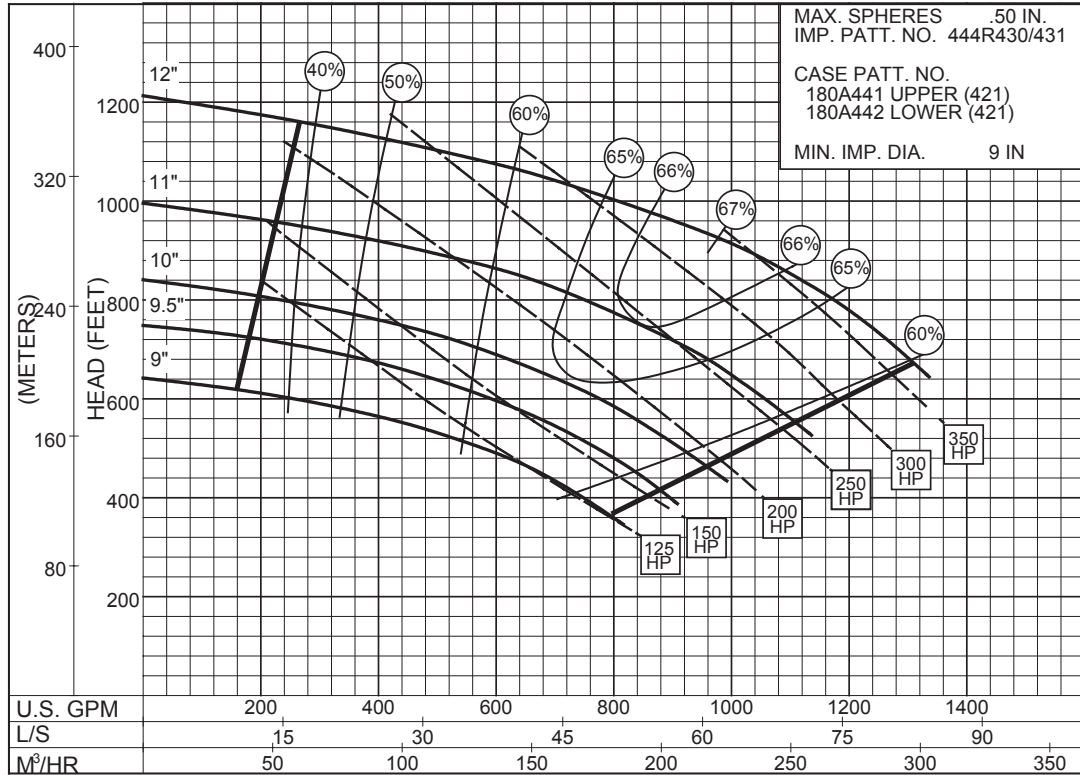
IMPELLER : Enclosed

R. P. M. : 3550

MAX. SPHERES .50 IN.
IMP. PATT. NO. 444R430/431

CASE PATT. NO.
180A441 UPPER (421)
180A442 LOWER (421)

MIN. IMP. DIA. 9 IN



3550
R.P.M

PC-175888

5 x 6 x 15 SERIES 420

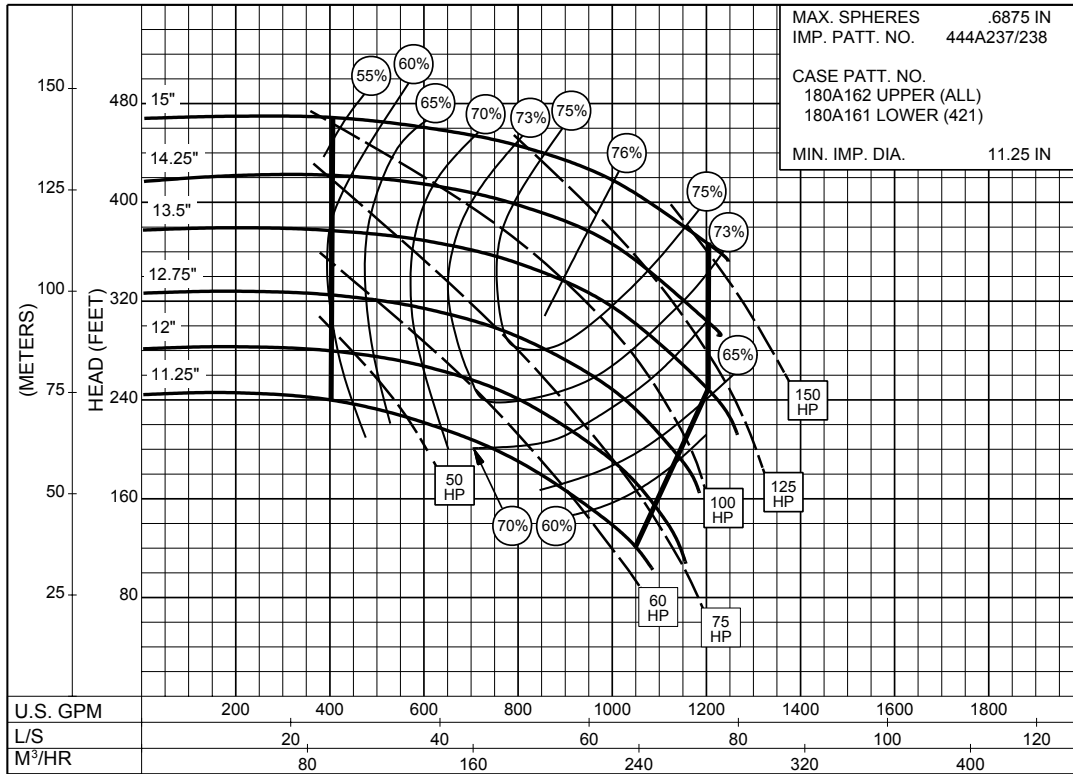
ENCLOSED IMPELLER

SIZE : 5x6x15

TYPE : 420

IMPELLER : Enclosed

R. P. M. : 1750



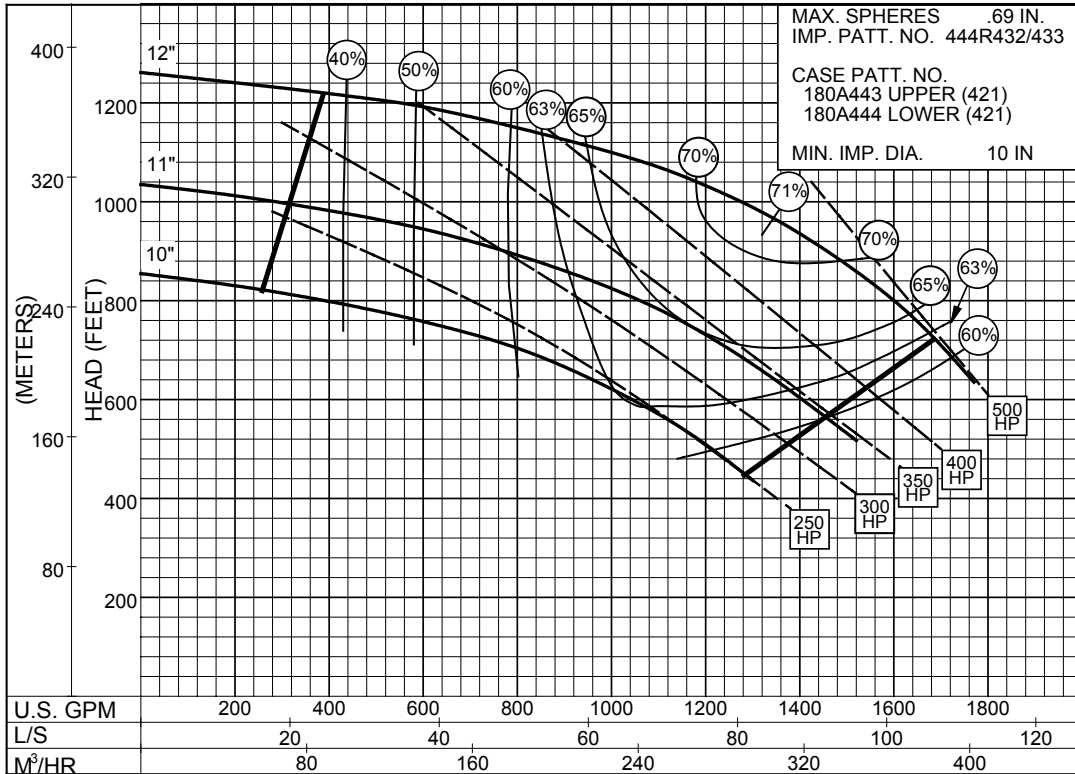
1750
R.P.M

1PC-115904

6 x 6 x 12 SERIES 420

ENCLOSED IMPELLER

SIZE : 6x6x12 TYPE : 420 IMPELLER : Enclosed R. P. M. : 3550



3550
R.P.M

PC-175890

6 x 8 x 17A SERIES 420

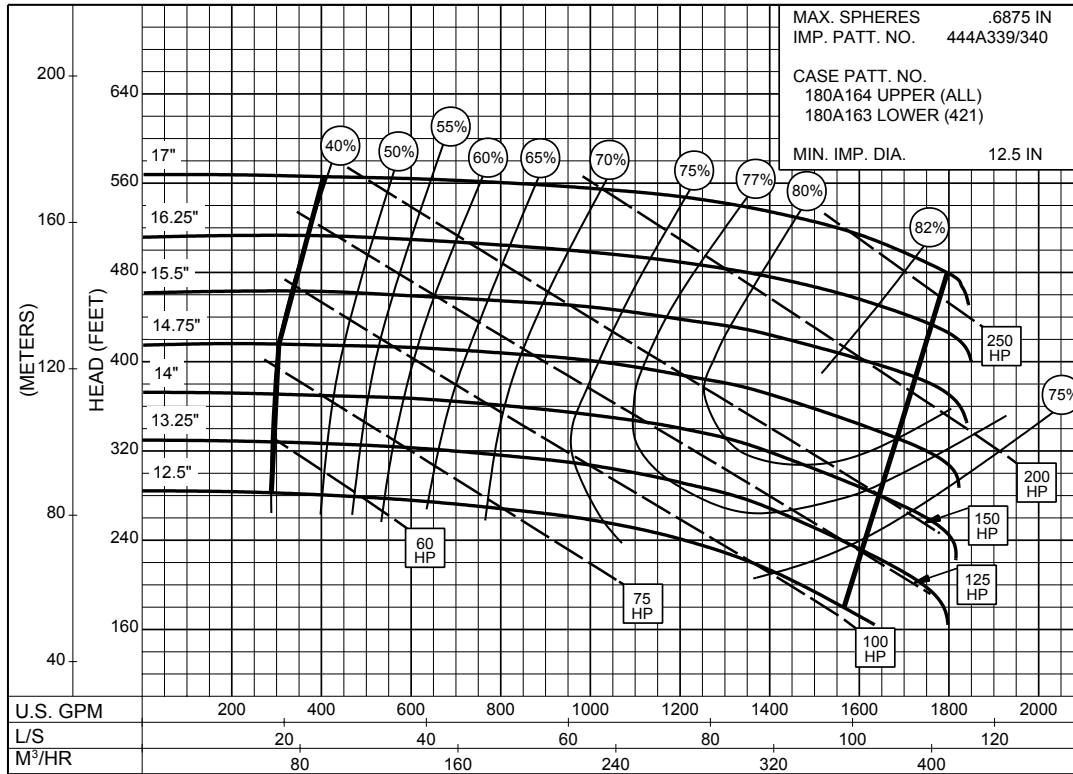
ENCLOSED IMPELLER

SIZE : 6x8x17A

TYPE : 420

IMPELLER : Enclosed

R. P. M. : 1750



1750
R.P.M

1PC-115905

6 x 8 x 17B SERIES 420

ENCLOSED IMPELLER

SIZE : 6x8x17B

TYPE : 420

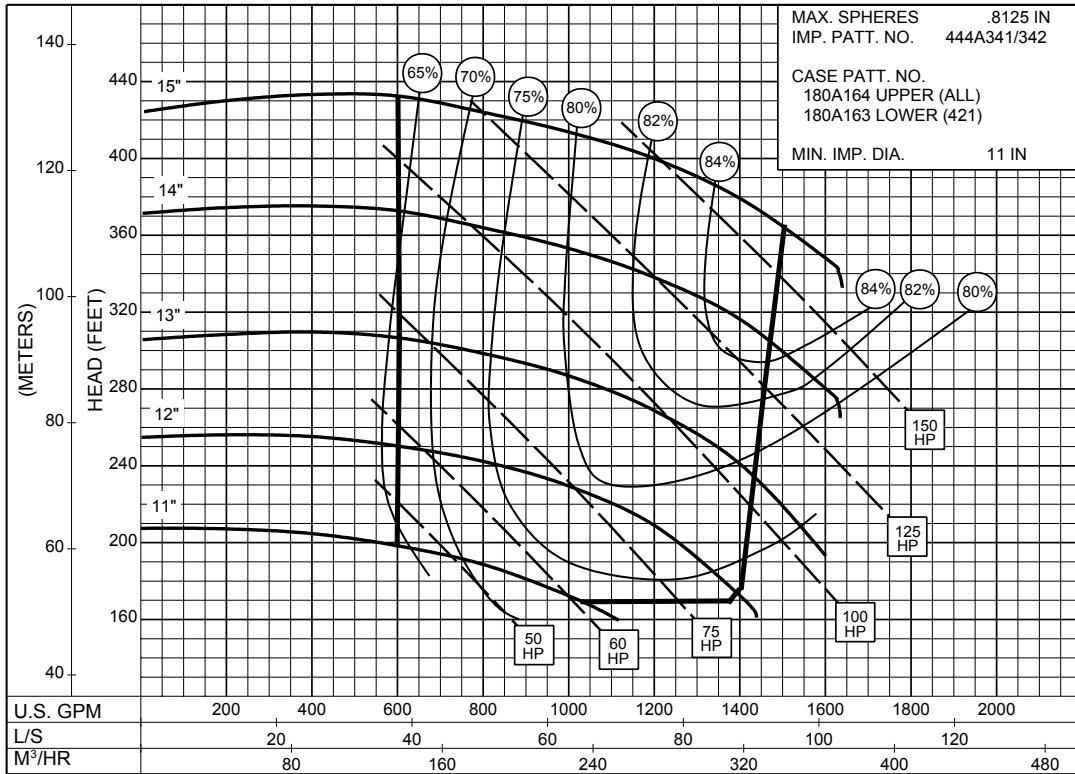
IMPELLER : Enclosed

R. P. M. : 1750

MAX. SPHERES .8125 IN
IMP. PATT. NO. 444A341/342

CASE PATT. NO.
180A164 UPPER (ALL)
180A163 LOWER (421)

MIN. IMP. DIA. 11 IN



IPC-115906

1750
R.P.M

SIZE : 6x8x17B

TYPE : 420

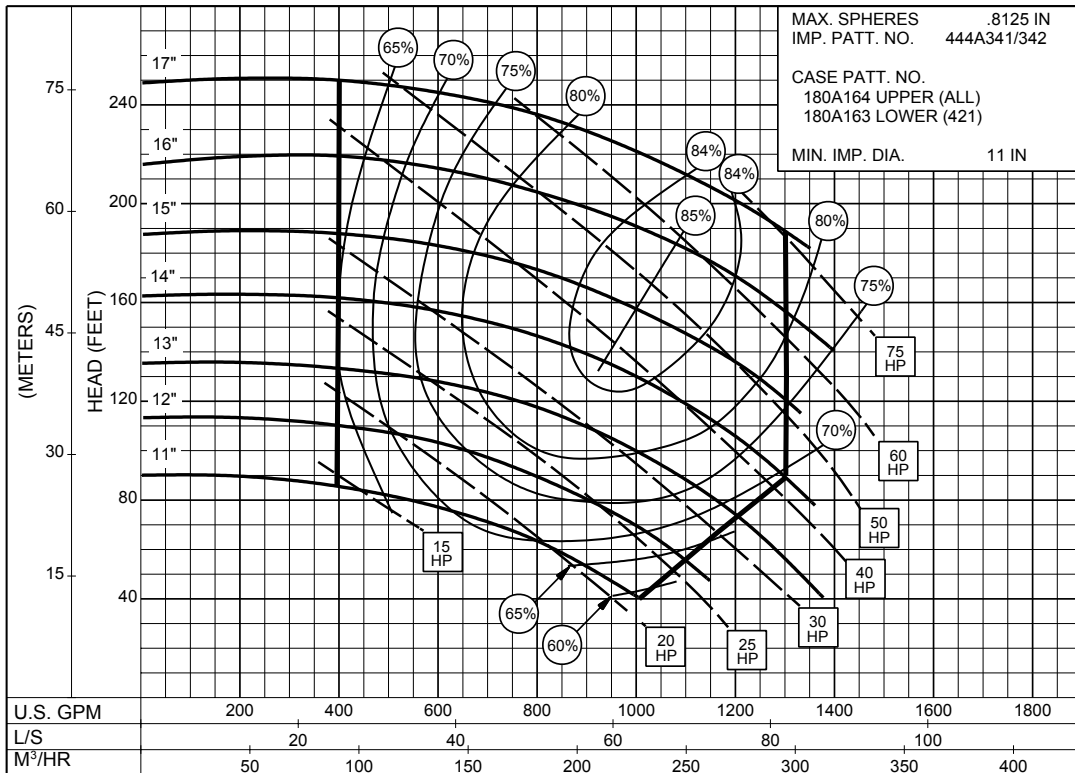
IMPELLER : Enclosed

R. P. M. : 1150

MAX. SPHERES .8125 IN
IMP. PATT. NO. 444A341/342

CASE PATT. NO.
180A164 UPPER (ALL)
180A163 LOWER (421)

MIN. IMP. DIA. 11 IN



IPC-115907

1150
R.P.M