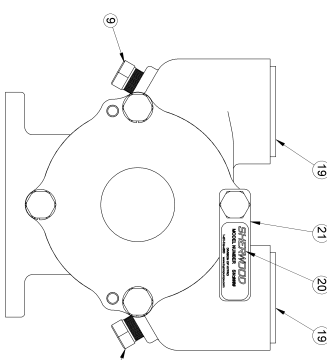
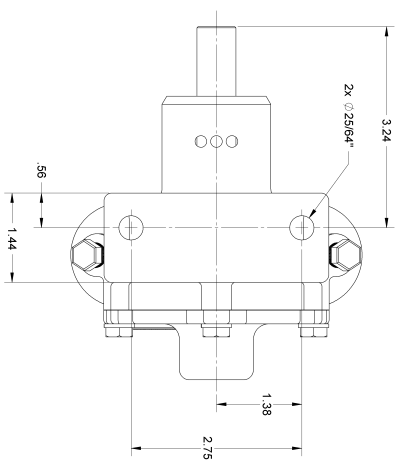
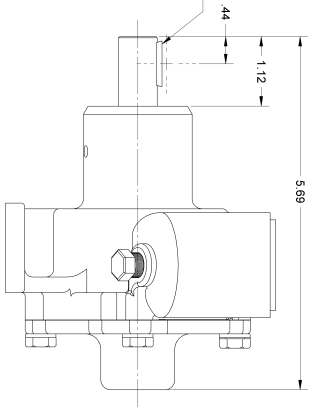
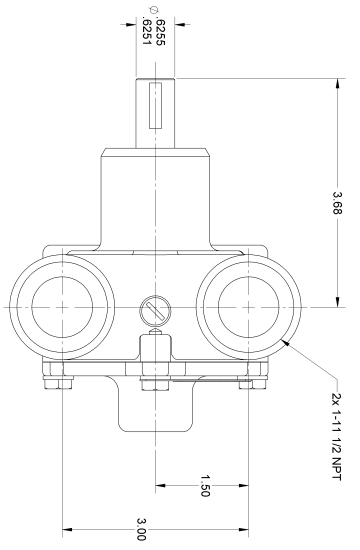
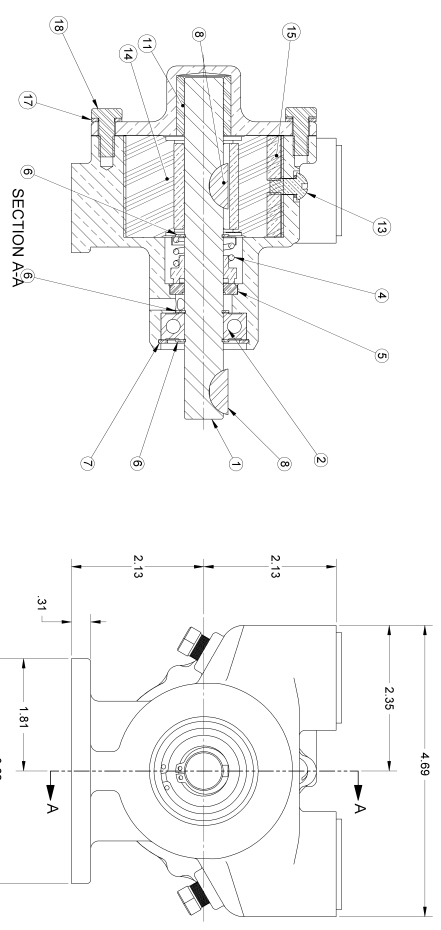


| ITEM NO. | PART NUMBER | DESCRIPTION | QTY. |
|----------|-------------|----------------------|------|
| 1 | 18502 | SHAFT | 1 |
| 2 | 18501 | PACKING | 1 |
| 3 | 18743 | WATER SEAL - TYPE 21 | 1 |
| 4 | 10926 | EYE SEAL SEAT RING | 1 |
| 5 | 04258 | KEY RETAINING RING | 1 |
| 6 | 04432 | WOODRUFF KEY | 2 |
| 7 | 00336 | PLUG | 2 |
| 8 | 01311 | DOVEL PIN | 2 |
| 9 | 10182 | BUSHING | 1 |
| 10 | 10182 | COVER | 1 |
| 11 | 10182 | CAM SCREW ASSY | 1 |
| 12 | 10182 | IMPELLER | 1 |
| 13 | 10915C | CAM SCREW | 1 |
| 14 | 10915 | IMPELLER | 1 |
| 15 | 10839 | GASKET | 1 |
| 16 | 10839 | GASKET | 1 |
| 17 | 12710 | LOCKWASHER | 4 |
| 18 | 17485 | CAP SCREW 1/4-20 | 4 |
| 19 | 18390 | PLUG - PLASTIC | 2 |
| 20 | 18390 | PLUG - PLASTIC | 2 |
| 21 | 13285 | TAG | 1 |

- NOTES:
1. APPLY BEAD OF PERMATEX AROUND CAM THREADED HOLE PRIOR TO ASSEMBLY. (ITEM 13).
 2. USE PACEASE OR EQUIV. WHEN INSTALLING WATER SEAL. (ITEM 4).
 3. USE COOLANT TO AID IN INSTALLATION OF RUBBER IMPELLER. (ITEM 14).
 4. TORQUE CAP SCREW 1/4-20. (ITEM 18). TO 5-8 FT/LBS.
 5. PRESSURE TEST PUMP TO 20-30 PSI.
 6. PRING R102J AND DATE CODE ON LABEL. (ITEM 20).



SHERWOOD
 A Division of
 3075th Avenue NW, Seattle, WA 98112 (206) 764-4200

DESIGNED BY: **ANB** DATE: **8/19/88**
 DRAWING BASED ON: **SCALE: 1:1**
 SHEET NUMBER: **R102**
 PART NUMBER: **RUBBER IMPELLER PUMP ASSY**

REWORKS PART NO. **B**

DATE: **8/17/88**
 APPROVED BY: **ANB**
 DATE: **8/17/88**
 THE DRAWING IS THE PROPERTY OF SHERWOOD
 AND IS NOT TO BE REPRODUCED OR TRANSMITTED
 IN ANY FORM OR BY ANY MEANS WITHOUT THE
 WRITTEN PERMISSION OF SHERWOOD

REVISIONS

| REV. | DATE | DESCRIPTION |
|------|---------|---|
| B | 8/19/88 | UNPATED BOM ADDED NOTES AND REMOVAL REVISIONS |
| A | 8/19/88 | APPROVED |