



MODELS 3R AND 3RX

3" SOLIDS HANDLING WASTEWATER PUMPS



STANDARD (3R) AND HAZARDOUS
LOCATION (3RX) CONSTRUCTION

WWW.FEMYERS.COM

MYERS® MODELS 3R & 3RX

Solids Handling Wastewater Pumps

The Right Choice

Myers® 3R and 3RX (hazardous location) submersible wastewater pumps are the right choice when difficult to pump fibrous or stringy solids are to be expected. The 3R/3RX series provides smooth, vibration-free operation when operating at heads higher than peak efficiency. For use in commercial lift stations, treatment plants and industrial waste applications. Myers offers a complete line of wastewater pumps, lift-out rail assemblies, controls and accessories to meet your needs. Call your Myers distributor or the Myers sales office at 419-289-1144 for more details.

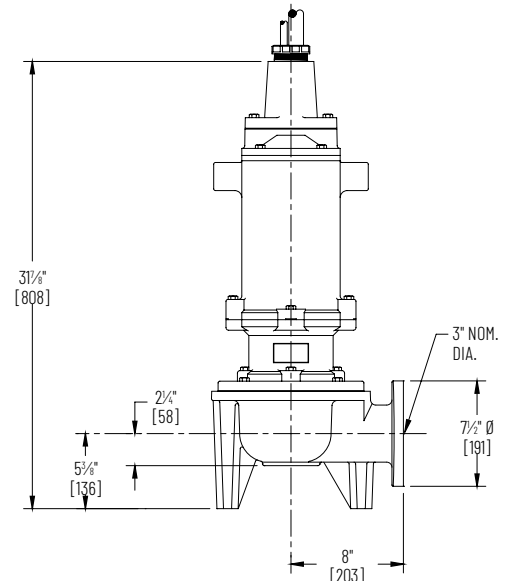
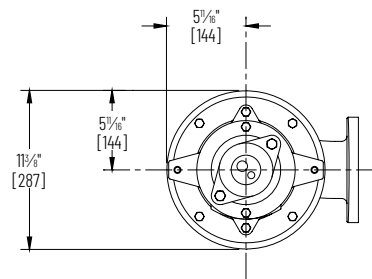


Product Capabilities		
Capacities To	300 gpm	18.9 lps
Heads To	40 ft.	12.192 m
Solids Handling (dia.)	3 in.	76.2 mm
Liquids Handling	raw unscreened sewage, fibrous wastewater, effluent, storm water	
Intermittent Liquid Temp.	up to 140°F	up to 60°C
Winding Insulation Temp. (Class F)	311°F	155°C
Motor Electrical Data	1750 RPM 2 - 5 HP, 230V, 1Ø, 60 Hz 2 - 5 HP, 200/230/460/575V, 3Ø, 60 Hz	
Std. Third Party Approvals	CSA	
Optional Approvals	FM Class 1, Groups C & D (3RX only)	
Acceptable pH Range	6 - 9	
Specific Gravity	.9 - 1.1	
Viscosity	28 - 35 SSU	
Horizontal Discharge Flanged Centerline	3 in. 125 lb. ANSI	76 mm

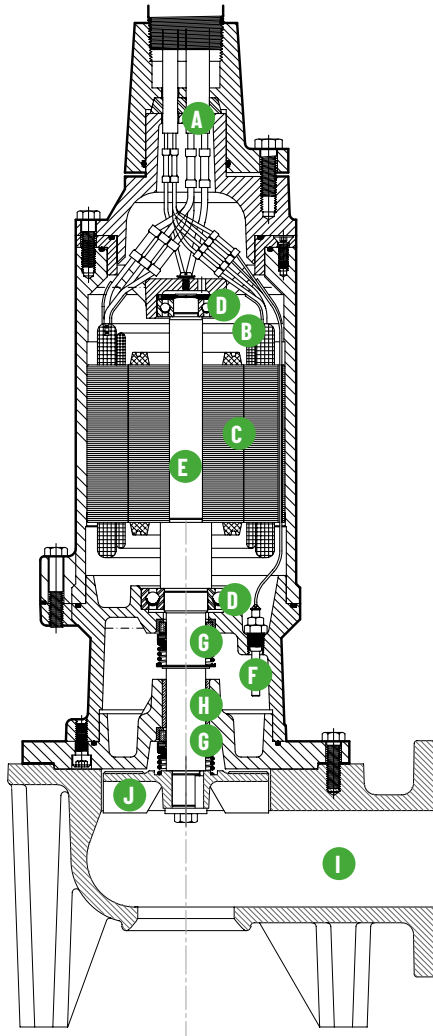
Note: Consult factory for applications outside these recommendations.

Construction Materials	
Motor Housing, Seal Housing, Cord Cap and Volute Case	cast iron, Class 30, ASTM A48
Recessed Impeller	ductile iron, Class 65 ASTM A536
Power Cord	S00W, W
Control Cord	S00W
Mechanical Seals	double tandem, type 21
Standard	carbon and ceramic
Optional	lower tungsten, carbide
Pump, Motor Shaft	416 SST
Fasteners	300 series SST

DIMENSIONS [Dimensions in mm]



Advantages by Design



A. Cable Entry System

Provides double seal protection. Cable jacket sealed by compression grommet. Individual wires sealed by epoxy potting.

B. Heat Sensor

Protects motor from burnout due to excessive heat from any overload condition. Automatically resets when motor has cooled.

C. Motor Stator

Heat shrunk into housing for perfect alignment and best heat transfer. Oil-filled motor conducts heat and lubricates bearings.

D. Ball Bearings

Upper and lower ball bearings support shaft and rotor and take axial and radial loads.

E. Heavy 416 SST Shaft

Corrosion resistant.

F. Seal Leak Probes

Detect water in seal housing. Activate warning light in control panel.

G. Shaft Seals

Double tandem mechanical shaft seals protect motor. Oil-filled seal chamber provides continuous lubrication.

H. Sleeve Bearing

Takes radial shock load; provides flame path.

I. Volute Case

Handles 3" solids. Completely open from inlet to discharge, 3" ANSI 125 lb. flange.

J. Recessed Impeller

Handles stringy trash and slurries without clogging or binding. Pump-out vanes help keep trash from seal; reduces pressure at seal faces.

Passes stringy trash, fibrous wastes, slurries, and other difficult to pump solids that standard enclosed or semiopen impellers cannot.

- Recessed impeller design has completely open passage in volute.
- Pumping action is by Vortex; solids cannot get caught in impeller volute.
- Operates without vibration or cavitation over entire performance curve. Operates near shut-off without harming pump.

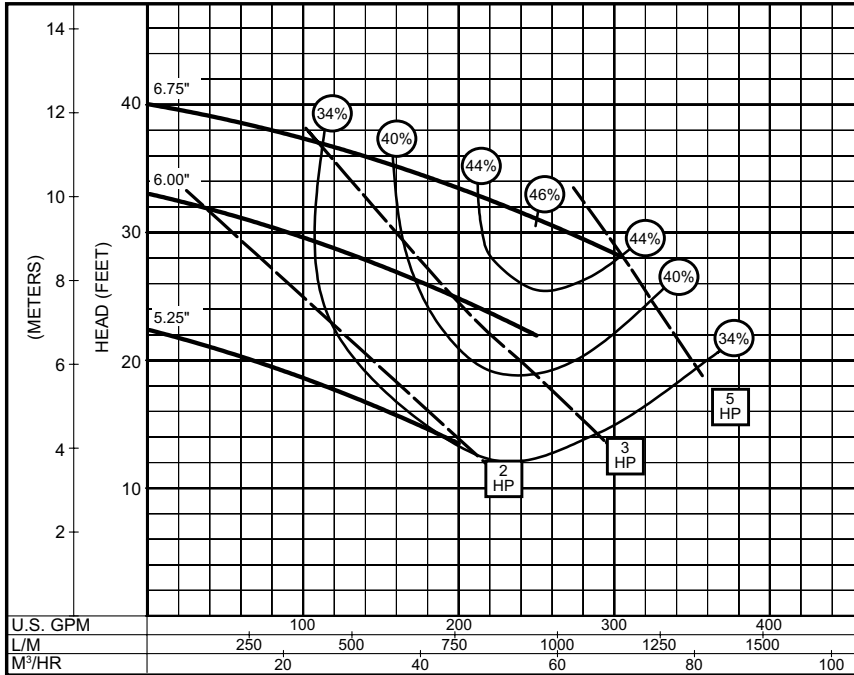
Durable motor will deliver many years of reliable service.

- Recessed impeller greatly increases bearing life by reducing radial load.
- Oil-filled motor for maximum heat dissipation and constant bearing lubrication.
- Heat sensor thermostats embedded in windings protect motor from overheat conditions.
- Seal leak probes warn of moisture entry; help prevent costly motor burnout.

Available with optional FM approval for use in Class 1, Groups C and D hazardous locations (3RX only).

Performance Data

1750 RPM



Pump performance is based on clear water (1.0 specific gravity @ 68°F) and pump fluid end (hydraulic) efficiency. Motor data based on 40°C ambient temperature.

Available Models		1750 RPM Motor Electrical Data										
Standard	Hazardous Location	HP	Volts	Phase	Start Amps	Run Amps	Service Factor Amps	Run kW	Start KVA	Run KVA	NEC Code Letter	Service Factor
3R30M4-21	3RX30M4-21	3	230	1	98	17.5	20.2	3.4	22.5	4	J	1.2
3R30M4-03	3RX30M4-03	3	208	3	51	15	17	4.5	18.4	5.6	G	1.2
3R30M4-23	3RX30M4-23	3	230	3	46	13	15.2	4.3	18.3	5.2	G	1.2
3R30M4-43	3RX30M4-43	3	460	3	23	6	7.6	4.3	18.3	5.2	G	1.2
3R30M4-53	3RX30M4-53	3	575	3	19	5	6	4.4	18.9	5.2	H	1.2
3R50M4-21	3RX50M4-21	5	230	1	108	34	44	6.3	24.8	7.8	E	1.2
3R50M4-03	3RX50M4-03	5	208	3	106	21.6	26	6.1	38.1	7.8	J	1.2
3R50M4-23	3RX50M4-23	5	230	3	96	18	21.6	6	38.2	7.2	J	1.2
3R50M4-43	3RX50M4-43	5	460	3	48	9	10.8	6	38.2	7.2	J	1.2
3R50M4-53	3RX50M4-53	5	575	3	39	7.2	8.6	6.1	38.8	7.2	J	1.2

1750 RPM Motor Efficiencies and Power Factor									
		Motor Efficiency %				Power Factor %			
HP	Phase	Service Factor Load	100% Load	75% Load	50% Load	Service Factor Load	100% Load	75% Load	50% Load
3	1	69	68	65	57	87	85	81	73
3	3	68	71	71	67	87	88	87	83
5	1	64	69	68	61	86	87	84	75
5	3	76	76	75	70.5	85	82	75	63



1101 Myers Parkway
Ashland, Ohio 44805
USA
Ph: 855.274.8948
Orders Fax: 800.426.9446

490 Pinebush Road
Unit 4
Cambridge, Ontario N1T 0A5
Canada
Ph: 800.387.4386
Orders Fax: 888.606.5484

www.Femyers.com

All Pentair trademarks and logos are owned by Pentair. All other brands or product names are trademarks or registered marks of their respective owners. Because we are continuously improving our products and services, Pentair reserves the right to change specifications without prior notice. Pentair is an equal opportunity employer.

K4634 (09/05/18) ©2018 Pentair plc. All Rights Reserved.