



EVERPURE[®]



MINI EVP 1-2-3 SIZING GUIDE

FOODSERVICE

EVERPURE®

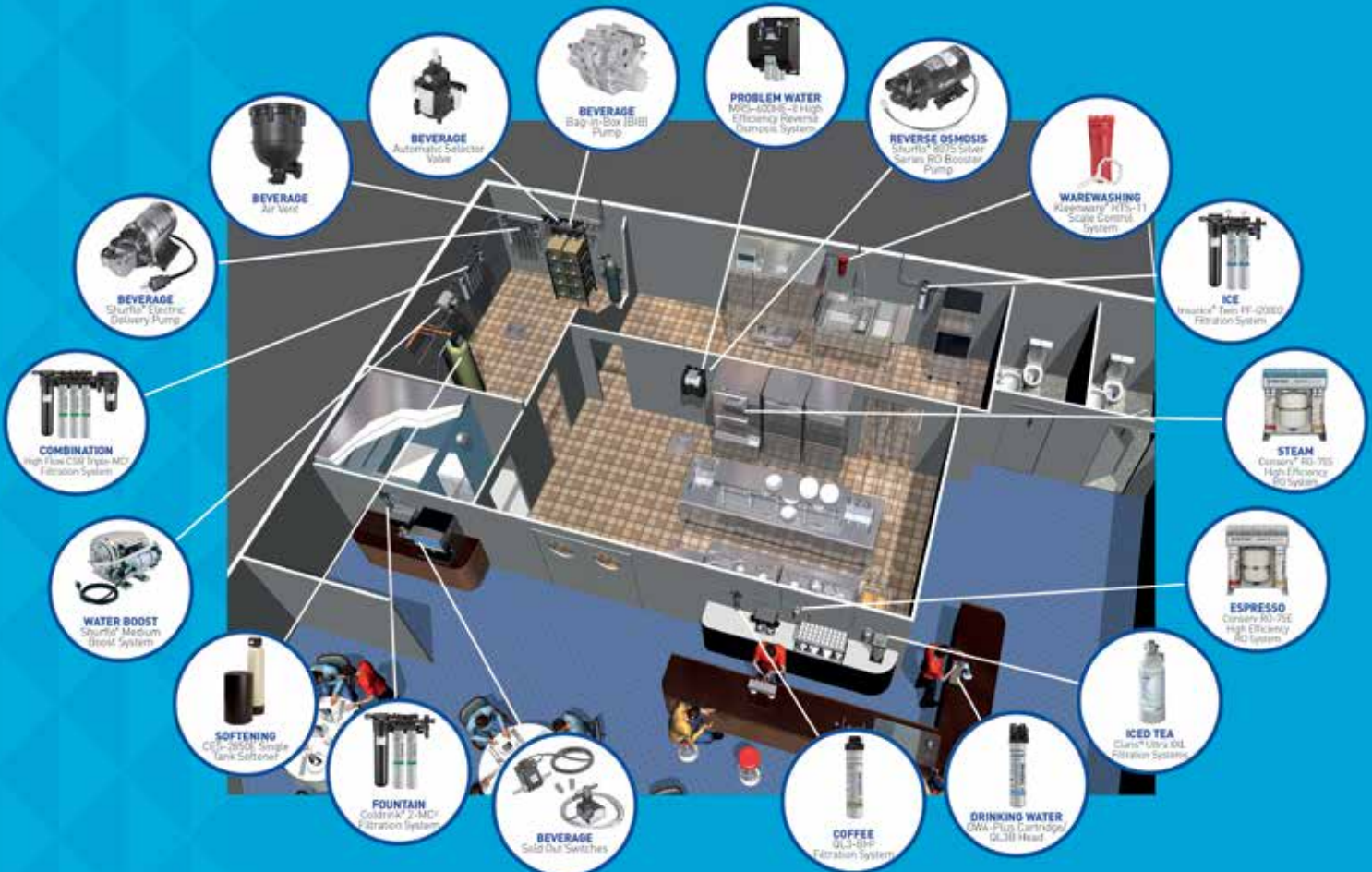
WATER SOLUTIONS YOU CAN TRUST

Since 1933, Pentair® Everpure has been a leading foodservice industry supplier and trusted provider of commercial water treatment products, services and solutions worldwide. Our solutions address a wide range of foodservice applications such as coffee, fountain beverage, ice, drinking water and more. Pentair also markets Everpure-branded filtration products for office coffee/water, vending, consumer, and aviation applications.

EVERYWHERE YOU NEED THEM

We've highlighted some of our most popular solutions by foodservice application within this brochure. For information on our full offering, please reference our Foodservice Catalog/Price List or contact your Pentair Sales Manager.

foodservice.pentair.com / everpuresizing.com



WATER AFFECTS YOUR PROFITS

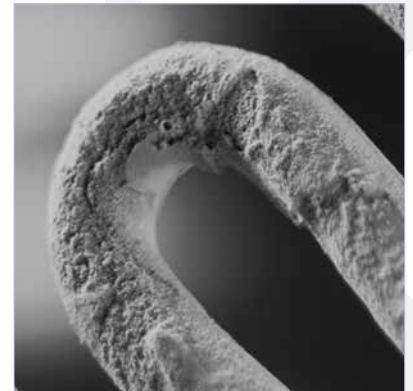
The first and last impressions of your business that a client typically has are the drinks that you serve. If the taste and odor of the water, ice, fountain and coffee are not as they should be, customers will notice and this is not a good way to impress them and make them return.

Water carries a large amount of chemicals, sediment and dissolved minerals that can affect the function and service life of all types of water-using foodservice equipment. Corrosion, the formation of scale and energy waste can be reduced or eliminated with proper water treatment.

WATER AFFECTS CUSTOMER SATISFACTION

Think about the following:

- Fountain beverages are 83% water
- Coffee is 99% water
- Ice is 100% water



Did you know that hard water scale formed on your foodservice equipment can reduce energy efficiency consumption by 50% or more?

We are **WATER YOU CAN TRUST®**. Whether you need filtration, softening or reverse osmosis, we are likely to have a solution. After all, our mere existence revolves around providing water of premium, uniform quality for all water-using foodservice applications. That is why so many operators rely on us to solve their water-related problems. In fact, Pentair has been the leading global provider of water quality for the foodservice industry for more than 85 years.

Pentair Everpure solutions offer:

Uniformity. Everpure products reduce minerals, unwanted chemicals and particles so that your water is clean, always.

Security. It is proven that Everpure products are effective. That is why you can find our products in foodservice operations throughout the world.

Satisfaction. Everpure water is superior in all aspects, which helps you achieve a more cost-effective, high-performance operation and a better overall experience for your customers.

COFFEE/ESPRESSO/TEA APPLICATIONS

SYSTEM SIZING GUIDELINES

COFFEE							
System	Equipment Type	Equipment Flow Rate Demand		Rated Capacity**		Over 6 Month Period	
		GPM	LPM	GALLONS	LITERS	GALLONS	LITERS
QL2-OCS ²	Brewers 0.50 gpm and under	0.50	1.89	1,500	5,677	3,000 1/2 Gal Pots	11,000 2 L Pots
QL3-BH ²	Brewers 0.50 gpm - 1.0 gpm	0.50	1.89	3,000	11,355	6,000 1/2 Gal Pots	23,000 2 L Pots
QC7I Single-MH ²	Brewers 1 gpm - 1.67 gpm	1.00	3.79	9,000	34,065	18,000 1/2 Gal Pots	68,000 2 L Pots
QC7I Twin-MH ²	Brewers 1.67 gpm and above	1.00	3.79	18,000	68,100	—	—

FILTRATION SOLUTIONS

Everpure® filters by Pentair® reduce:

- Abrasion and clogging
- Scale buildup and corrosion
- Off-tastes and odors
- Harmful cysts by mechanical means*

The benefits of Everpure filtration:

- Consistent quality, better tasting coffee, tea and espresso
- Less equipment downtime and lower energy costs
- Lower maintenance and equipment costs, and lower total cost of ownership
- Satisfied customers and increased profits

EV9275-60 QL2-OCS² SYSTEM



Coffee Brewers

- Up to 3 lbs. [1.4 kgs.] of coffee per day
- Up to 17 glass pots (1/2 gal) or 13 airpots [2.5 L] brewed per day

System Capacity

- 1,500 gallons [5,678 L]

Replacement Cartridge

- EV9618-02 OCS²*

Replacement Head

- EV4339-92 QL2

EV9272-00 QL3-BH² SYSTEM



Coffee Brewers

- Up to 6 lbs. [2.7 kgs.] of coffee per day
- Up to 34 glass pots (1/2 gal) or 25 airpots [2.5 L] brewed per day

System Capacity

- 3,000 gallons [11,356 L]

Replacement Cartridge

- EV9612-50 BH²

Replacement Head

- EV4339-92 QL3

*See individual system specification sheets for performance claims and FIFRA registration information.

**System capacity may be reduced in areas where higher levels of particulates exist in the water, decreasing the flow rate through the filter system over time. Replace cartridge if flow rate is reduced below the rate demanded by the equipment.

SYSTEM SIZING GUIDELINES

ESPRESSO AND TEA			
GRAINS OF HARDNESS	LOW VOLUME: 150 SHOTS PER DAY	MEDIUM VOLUME: 150 - 300 SHOTS PER DAY	HIGH VOLUME: 301-500 SHOTS PER DAY
8 Grains Hardness	Claris Ultra M 500	Claris Ultra L 1000*	Claris Ultra XL 1500*
12 Grains of Hardness	Claris Ultra L 1000	Claris Ultra XL 1500	Claris Ultra XXL 2000*

FILTRATION/SOFTENING SOLUTIONS

Everpure Claris Ultra and Prime System
Features and Benefits:

- Softens without salt
- Removes particles AND chemicals
- Requires no electricity or drain
- Imparts no additives to water
- Effective removes hardness
- Prevents clogged drains
- Reduces metal corrosion
- Does not produce water waste
- NSF 42-certified cartridges

Claris 5-stage filtration process offers:

- Prefiltration
- Carbonate hardness adjustment
- Fine filtration
- Highly efficient carbon block removes harmful contaminants and unpleasant tastes and odors
- Solid membrane filter removes particles down to 5 microns for high levels of equipment protection

EV4339-84 CLARIS™ ULTRA XXL 2000 CARTRIDGE/EV4339-92 CLARIS HEAD



Coffee Brewers

- Up to 10.0 lbs. [4.5 kgs.] of coffee per day
- Up to 60 glass pots (1/2 gal) or 45 airpots [2.5 L] brewed per day

Espresso and Tea

- Up to 10.0 lbs. [4.5 kgs.] of coffee per day

System Capacity

- Up to 5,283 gallons (20,000 L)

Replacement Cartridge

- EV4339-84 Claris™ Ultra 2000*

Replacement Head

- EV4339-92 Claris Gen 2 3/8-inch QCF*
Also available in 3/8-inch NPT and BSP

EV4339-86 CLARIS™ PRIME CARTRIDGE/EV4339-92 CLARIS HEAD



Coffee Brewers

- Up to 5 lbs of coffee per day
- Up to 30 glass pots (1/2 gal) or 23 airpots brewed per day

Espresso and Tea

- Up to 10.0 lbs. [4.5 kgs.] of coffee per day

System Capacity

- Up to 1,255 gallons (4,750 L)

Replacement Cartridge

- EV4339-84 Claris™ Ultra 2000*

Replacement Head

- EV4339-92 Claris Gen 2 3/8-inch QCF*
Also available in 3/8-inch NPT and BSP

Note

- If silica is present in influent water supply, consult factory prior to installing filtration.
- If chlorides or sulphates are present in influent water supply, use Claris Prime.

Claris™ is a trademark of Aquis, GmbH.

STEAM/COMBI OVEN APPLICATIONS

FILTRATION SOLUTIONS

Everpure® filters by Pentair® reduce:

- Abrasion and clogging
- Scale buildup and corrosion
- Off-tastes and odors
- Harmful cysts by mechanical means*

The benefits of Everpure filtration:

- Fewer delimitings
- Equipment lasts longer
- Less equipment downtime, and lower maintenance and energy costs
- Satisfied operators and increased profits

EV9976-00 CONSERV® 75S REVERSE OSMOSIS (RO) SYSTEM



Compatible With

- Rapid flash steamers 2 kW – 3 kW
- Proofer, small flash steamers 4 kW – 10 kW
- Medium flash steam & combi ovens 11 kW – 24 kW
- Steam applications requiring less than 3 gallons per hour

Water Requirements

- >12.0 grains/gallon hardness

System Capacity

- Up to 50 gallons (189 L) per day

Replacement Cartridges

- EV9976-25 Conserv 75S Cartridge Kit Includes:
 - EV9693-21 4FC5
 - 4002575 GRO-75EN RO Membrane
 - EV9627-45 4CC Calcite Feeder

EV9970-20 MRS-350BL WITH STORAGE TANK



Compatible With

- Gas boiler systems up to 175K BTU – requires 40.0 gallon [151.4 L] tank
- Gas boiler systems greater than 175K BTU – requires 80.0 gallon [302.8 L] tank
- Electric boiler systems up to 48 kW – requires 40.0 gallon [151.4 L] tank
- Electric boiler systems: 48 kW and greater – requires 80.0 gallon [302.8 L] tank
- All Boilerless Systems: For tank sizing, contact Pentair Everpure Technical Service

Water Requirements

- >12.0 grains/gallon hardness

System Capacity

- Up to 350 gallons (1,325 L) per day

Replacement Cartridges

- EV9627-04 7TO-BW (1 ea)
- EV9627-07 MR-350 (1 ea)
- EV9668-24 BW-4400 (1 ea)

Replacement Tanks

- 34682 40 gallon (151.4 L) tank
- 34684 80 gallon (227.1 L) tank

Visit Everpuresizing.com or contact Technical Support at 800.942.1153 or servicespecialist@pentair.com for additional system sizing information.

ICE APPLICATIONS

FILTRATION SOLUTIONS

Everpure Insurice® System Features Include:

- NSF certifications
- Manifold has inlet water shutoff valve with optional integrated sediment prefilter, flushing valve and water pressure gauge(s)
- Chlorine, taste & odor and sediment reduction
- Harmful cyst reduction by mechanical means*
- Excellent flow rates for even largest machines
- Particulate removal down to 1/2 micron in size by mechanical means*
- Scale control
- Proprietary Micro-Pure® II filtration media effectively inhibits the growth of bacteria on the filter media that can decrease product life*

EV9324-21 INSURICE® SINGLE PF-I2000² SYSTEM



Cubers:

- <650 lbs./day [<295 kgs./day] IMI Cornelius®, Manitowoc®, Follett®, Ice-O-Matic®

Flakers:

- <1,500 lbs./day [<680 kgs./day] IMI Cornelius, Manitowoc, Follett, Ice-O-Matic, Scotsman®

System Capacity

- 9,000 gallons (34,907 L)

Replacement Cartridges

- EV9534-26 EC210 Prefilter (1 ea)
- EV9612-22 i2000² (2 ea)

Replacement Head

- EV9293-21 Coldrink®/Insurice Single (1 ea)

EV9324-22 INSURICE TWIN PF-I2000² SYSTEM



Cubers:

- 650-1,200 lbs./day [295-544 kgs./day] IMI Cornelius, Manitowoc, Follett, Ice-O-Matic, Scotsman
- Up to 650 lbs./day [295 kgs./day] Hoshizaki®

Flakers:

- 1,500-2,500 lbs./day [680-1,134 kgs./day] IMI Cornelius, Manitowoc, Follett, Ice-O-Matic, Scotsman

System Capacity

- 18,000 gallons (69,813 L)

Replacement Cartridges

- EV9534-26 EC210 Prefilter (1 ea)
- EV9612-22 i2000² (2 ea)

Replacement Head

- EV9293-22 Coldrink/Insurice Twin (1 ea)

EV9325-23 INSURICE TRIPLE PF-I4000² SYSTEM



Cubers:

- 1,200-1,600 lbs./day [544-726 kgs./day] IMI Cornelius, Manitowoc, Follett, Ice-O-Matic, Scotsman
- 650-1,150 lbs./day [295-522 kgs./day] Hoshizaki, Vogt®

Flakers:

- 2,500-3,500 lbs./day [1,134-1,588 kgs./day] IMI Cornelius, Manitowoc, Follett, Ice-O-Matic, Scotsman

System Capacity

- 36,000 gallons (139,626 L)

Replacement Cartridges

- EV9534-26 EC210 Prefilter (1 ea)
- EV9612-32 i4000² (3 ea)

Replacement Head

- EV9293-23 Coldrink/Insurice Triple (1 ea)

*See individual system specification sheets for performance claims and FIFRA registration information.

FOUNTAIN APPLICATIONS

Everpure® filters by Pentair® reduce:

- Abrasion and clogging from dirt
- Chlorine, taste & odor and other contaminants
- Harmful cysts by mechanical means*

System features include:

- NSF certifications
- Manifold has inlet water shutoff valve with optional integrated sediment prefilter, flushing valve and water pressure gauge(s)
- Harmful cyst reduction by mechanical means*
- Chlorine, taste & odor and sediment reduction
- 1/2 micron filtration by mechanical means*, featuring Micro-Pure® II filtration media effectively inhibits the growth of bacteria on the filter media that can decrease product life*

The benefits of Everpure filtration:

- Consistent beverage quality
- Less equipment downtime, lower maintenance costs and lower total cost of ownership
- Bottled water quality, taste and appeal
- Satisfied customers and increased profits

APPLICATION GUIDELINE

Ambient carbonation versus cold carbonation:

- If a carbonator is placed before the water is chilled using a cold plate, the associated term is ambient carbonation.
- When it is placed post-chilling, it is cold carbonation. Water that is cold absorbs CO₂ better so drinks will have more fizz.

EV9328-01 COLDRINK® 1-MC² SYSTEM



Ambient Carbonator (Carbonated Beverages Only)

- 1 carbonator

System Capacity

- 9,000 gallons (34,065 L)

Replacement Cartridges

- EV9534-26 EC210 prefilter (1 ea)
- EV9612-56 MC² (1 ea)

Replacement Head

- EV9293-21 Coldrink 1/Insurice Single

EV9328-02 COLDRINK® 2-MC² SYSTEM



Ambient Carbonator (Carbonated Beverages Only)

- 2 carbonator

Ambient Carbonator (Carbonated & Non-Carbonated Beverages)

- 1 carbonator

Cold Carbonator (Carbonated Beverages Only)

- 1 carbonator

Cold Carbonator (Carbonated & Non-Carbonated Beverages)

- 1 carbonator

System Capacity

- 18,000 gallons (68,100 L)

Replacement Cartridges

- EV9534-26 EC210 prefilter (1 ea)
- EV9612-56 MC² (2 ea)

Replacement Head

- EV9293-22 Coldrink 2/Insurice Twin

EV9328-03 COLDRINK® 3-MC² SYSTEM



Ambient Carbonator (Carbonated Beverages Only)

- 3 carbonator

Ambient Carbonator (Carbonated & Non-Carbonated Beverages)

- 2 carbonator

Cold Carbonator (Carbonated Beverages Only)

- 2 carbonator

Cold Carbonator (Carbonated & Non-Carbonated Beverages)

- 2 carbonator

System Capacity

- 27,000 gallons (102,195 L)

Replacement Cartridges

- EV9534-26 EC210 prefilter (1 ea)
- EV9612-56 MC² (3 ea)

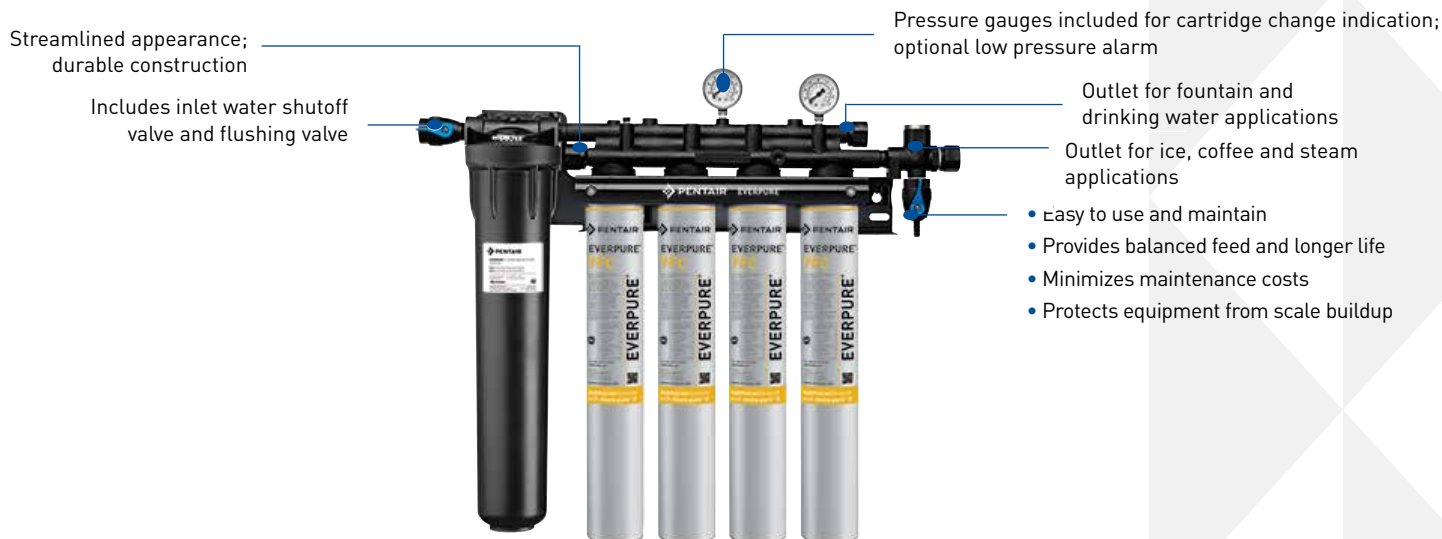
Replacement Head

- EV9293-23 Coldrink 3/Insurice Triple

COMBINATION APPLICATIONS

- 20.0" [50.8 cm] coarse prefilter
- 1/2 micron precoat filtration by mechanical means with proprietary Micro-Pure® II media*
- SR-X Scale Reduction Feeder featuring ScaleStick®
- Manifold has inlet water shutoff valve, flushing valve, inlet/outlet water pressure gauge(s) and dual outlets

Complete system accommodates multiple applications including coffee, fountain, ice and steam.



System sizing guidelines: Our system sizing guidelines are approximations based on properly installed equipment, average usage at normal operating flow rate and average water conditions. These guidelines are designed to give you approximately six (6) months of use between filter cartridge changes. Variations in equipment usage and/or incoming water conditions can produce different results.

EVERPURE COMBINATION FILTRATION SYSTEM						APPLICATION				
						FOUNTAIN	ICE		COFFEE AND TEA	
SYSTEM	PART NO	GPM	LPM	RATED CAPACITY		# OF CARBONATORS	DAILY PRODUCTION		POT BREWERS	URNS
				GAL-LONS	LITRES		LBS	KGS		
High Flow CSR Triple MC ²	EV9328-06	5.10	19.31	27,000	102,206	1	< 650.0	< 294.8	Up to 2	N/A
High Flow CSR Quad MC ²	EV9437-10	6.68	25.29	36,000	136,275	2	< 650.0	< 294.8	Up to 2	1
High Flow CSR Plus XC ²	EV9347-20	6.68	25.29	48,000	181,700	2	651.0 - 1200.0	295.3 - 544.3	Up to 4	1
High Flow CSR Quad 4FC	EV9329-44	10.00	37.85	60,000	227,125	3	1201.0 - 1500.0	544.8 - 680.4	Up to 4	2
High Flow CSR Triple 7FC	EV9329-73	7.50	28.39	75,000	283,906	2	1201.0 - 1500.0	544.8 - 680.4	Up to 4	2
High Flow CSR Quad 7FC	EV9329-74	10.00	37.85	100,000	378,541	4+	1501.0+	680.8+	Multi	Multi

EV9329-74 HIGH FLOW CSR QUAD-7FC SYSTEM



Supports three (3) carbonators, 1,201-1,500 lbs. [545-680 kgs.] total daily ice production and up to four (4) coffee/tea brewers and two (2) urns

System Capacity

- 100,000 gallons (378,541 L)

Replacement Cartridges

- EV9534-26 EC210 Prefilter (1 ea)
- EV9692-61 7FC (4 ea)
- EV9799-32 SS-IMF (1 ea)

Replacement Head

- EV9294-24 High Flow CSR Quad

*See individual system specification sheets for performance claims and FIFRA registration information.

CARTRIDGE BEST SELLER GUIDE

The cartridges chosen for the below chart can either be found as replacement cartridges within this document and/or are represent some of our best sellers. For more Everpure replacement cartridge solutions, please visit foodservice.pentair.com or reference the Foodservice Catalog/Price List.

PRODUCT	CARTRIDGE PART NO	RATED CAPACITY GALS / LITRES	MICRON RATING	APPLICATIONS								BENEFITS								NSF		
				COFFEE	ESPRESSO	DRINKING WATER	ICED TEA	FOUNTAIN	ICE	BOILERLESS STEAM	BOILER STEAM	CHLORINE, TASTE & ODOR	SCALE INHIBITION	PARTICULATE	TURBIDITY REDUCTION	LEAD REDUCTION	CYST REDUCTION*	CHLORAMINES	BACTERIOSTATIC* CONTROL		BACTERIA REDUCTION	
2CB5	EV9617-05	3,000 / 11,355	5.0	•		•		•					•		•							42
2CB5-S	EV9617-22	3,000 / 11,355	5.0	•		•	•						•		•							42
2FC	EV9691-56	6,000 / 22,710	0.5			•							•		•			•		•		42, 53
2FC-S	EV9691-76	6,000 / 22,710	0.5	•		•	•						•		•			•		•		42, 53
2FC5	EV9691-66	6,000 / 22,710	5.0			•		•					•		•					•		42
2FC5-S	EV9691-86	6,000 / 22,710	5.0	•		•			•				•	•						•		42
4CB5	EV9617-16	6,000 / 22,710	5.0			•		•		•	•		•		•							42
4FC	EV9692-21	15,000 / 56,781	0.5			•		•					•		•			•		•		42, 53
4FC-S	EV9692-31	15,000 / 56,781	0.5	•		•			•				•	•	•			•		•		42, 53
4FC5	EV9693-21	15,000 / 56,781	5.0			•		•					•		•					•		42
4FC5-S	EV9693-31	15,000 / 56,781	5.0	•		•			•				•	•	•					•		42
4SI	EV9606-51	15,000 / 56,781	0.5			•			•				•		•			•				42, 53
7CB5	EV9618-11	10,000 / 37,850	5.0			•		•		•	•		•		•							42
7CB5-S	EV9618-21	10,000 / 37,850	5.0	•		•			•				•	•	•							42
7FC	EV9692-61	25,000 / 94,635	0.5			•		•					•		•			•		•		42, 53
7FC-S	EV9692-71	25,000 / 94,635	0.5	•		•			•				•	•	•			•		•		42, 53
7FC5	EV9693-61	25,000 / 94,635	5.0			•		•					•		•					•		42
7FC5-S	EV9693-71	25,000 / 94,635	5.0	•		•			•				•	•	•					•		42
7SI	EV9606-01	25,000 / 94,635	0.5			•		•					•		•			•		•		42, 53
BH ²	EV9612-50	3,000 / 11,355	0.5	•		•							•	•	•			•		•		42, 53
Claris™ Ultra S	EV4339-80	660* / 2,500	5.0	•	•	•							•	•								42
Claris Ultra M	EV4339-81	1,109* / 4,200	5.0	•	•	•							•	•								42
Claris Ultra L	EV4339-82	2,245* / 8,500	5.0	•	•	•							•	•								42
Claris Ultra XL	EV4339-83	3,196* / 12,100	5.0	•	•	•							•	•								42
Claris Ultra XXL	EV4339-84	5,283* / 20,000	5.0	•	•	•							•	•	•							42
Claris Prime	EV4339-86	557 / 2,110 1,255 / 4,750	5.0	•	•	•			•	•			•	•								42
ESO ⁶	EV9607-10	4,100 / 15,520	N/A	•	•	•																N/A
ESO ⁷	EV9607-25	5,300 / 20,063	N/A	•	•	•																N/A
i2000 ²	EV9612-22	9,000 / 34,065	0.5					•					•	•	•			•		•		42, 53
i4000 ²	EV9612-32	12,000 / 45,420	0.5					•					•	•	•			•		•		42, 53
MC ²	EV9612-56	9,000 / 34,069	0.5			•		•					•		•			•		•		42, 53
MH ²	EV9613-21	9,000 / 34,069	0.5	•		•							•	•	•			•		•		42, 53
MicroGuard™ Pro 2	EV9637-01	2,200 / 8,328	0.15			•							•		•			•		•		N/A
MicroGuard Pro 4	EV9637-02	3,600 / 13,627	0.15			•							•		•			•		•		N/A
OCS ²	EV9618-02	1,500 / 5,678	0.5	•		•							•	•	•			•		•		42, 53

*See individual system specification sheets for performance claims and FIFRA registration information.

FOODSERVICE WATER SPECIFICATIONS

Quality water is important for taste, brewing, carbonation, steaming, equipment protection and more. Water used to make coffee, espresso beverages, fountain beverages, drinking water and ice must be potable under local requirements and USEPA

drinking water standards. It is also recommended that water quality meets the attributes specified in the following table by food service application:

APPLICATION	ATTRIBUTE	SPECIFICATION
Coffee and Espresso	Turbidity	Must not exceed 0.5 Nephelometric Turbidity Units
	Taste & Odor	Free from off-tastes and odors
	Total Chlorine	<0.05 ppm
	Iron	Not more than 0.25 ppm
	Total Alkalinity	Not more than 100 ppm
	Total Hardness	17 - 85 ppm
	Total Dissolved Solids	70 - 200 ppm
	pH	6.80 - 7.40
	Sodium	At or near 10 mg/l
Fountain and Drinking Water	Turbidity	Must not exceed 0.5 Nephelometric Turbidity Units
	Taste & Odor	Free from off-tastes and odors
	Total Chlorine	<0.05 ppm
	Iron	Not more than 0.30 mg/l
	Total Alkalinity	Not more than 150 mg/l
	Total Hardness	Not more than 100 mg/l
	Total Dissolved Solids	Not more than 500 mg/l
	Sulfates	Not more than 250 mg/l
	Chlorides	Not more than 250 mg/l
	pH	6.50 - 8.50
Ice	Turbidity	Must not exceed 0.5 Nephelometric Turbidity Units
	Taste & Odor	Free from off-tastes and odors
	Total Chlorine	<0.05 ppm
	Iron	Not more than 0.25 ppm
	Total Alkalinity	<150 ppm
	Total Hardness	<85 ppm
	Total Dissolved Solids	70 - 200 ppm
	pH	6.80 - 7.40
	Chlorides	80 ppm

Water used on inlets to steamers or warewashers should meet quality requirements as specified by the equipment's manufacturer or as listed in the following table:

APPLICATION	ATTRIBUTE	SPECIFICATION
Steam	Turbidity	Must not exceed 0.50 Nephelometric Turbidity Units
	Taste & Odor	Free from off-tastes and odors
	Total Chlorine	<0.05 ppm
	Iron	Not more than 0.25 ppm
	Total Alkalinity	Not more than 100 ppm
	Total Hardness	17 - 85 ppm
	Total Dissolved Solids	25 - 75 ppm
	pH	6.80 - 7.40
	Chlorides	30 ppm



FILTRATION SOLUTIONS

EVERPURE-SHURFLO WORLD HEADQUARTERS, 1040 MUIRFIELD DRIVE, HANOVER PARK, IL 60133 USA • FOODSERVICE.PENTAIR.COM
800.942.1153 (US ONLY) • 630.307.3000 MAIN • 630.307.3030 FAX • CSEVERPURE@PENTAIR.COM EMAIL

Pentair trademarks and logos are owned by Pentair plc or its affiliates. Third party registered and unregistered trademarks and logos are property of their respective owners. Because we are continuously improving our products and services, Pentair reserves the right to change specifications without prior notice.

Pentair is an equal opportunity employer.

EV7017-59 FE18 © 2018 Pentair Filtration Solutions, LLC. All Rights Reserved.