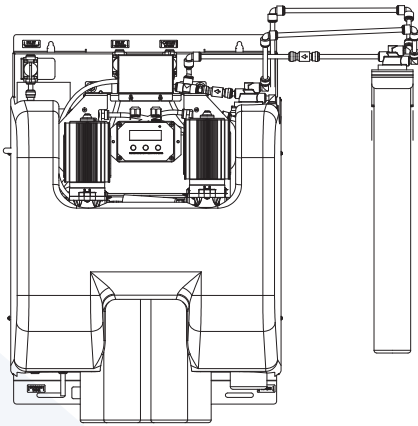




► FROM PENTAIR WATER SOLUTIONS

MRS-600HE-II HIGH EFFICIENCY REVERSE OSMOSIS SYSTEM WITH 2ND MEMBRANE KIT

System Part Number: EV997046 with
2nd Membrane Kit: EV996900 or EV997000



SYSTEM DESCRIPTION

The **MRS-600HE II** is a high-output, high-efficiency system with an optional second membrane and can be configured for multiple foodservice applications. This advanced RO system utilizes a blending process that effectively removes the appropriate amount of total dissolved solids (TDS) from the incoming water to achieve your desired water quality.

FEATURES • BENEFITS

- ◆ Addition of second membrane significantly increases RO output of the MRS-600HE-II system with minor changes* while maintaining up to 80% water efficiency
- ◆ Reduces limescale buildup* that can cause machine downtime and maintenance costs
- ◆ Reduces chlorine, taste & odor and other contaminants that can adversely affect the taste of water and beverages*

APPLICATIONS

- ◆ Ice
- ◆ Coffee
- ◆ Steam
- ◆ Espresso
- ◆ Combi Ovens
- ◆ Specialty Coffee

INSTALLATION TIPS

- ◆ Choose a mounting location suitable to support the weight of the system while operating.
- ◆ Delimiting of existing water-using equipment is recommended.
- ◆ Never use a saddle valve for connection.
- ◆ Use 3/8" (9.5 mm) minimum water line.
- ◆ Install vertically with cartridges hanging down and allow 3" (7.6 cm) on all four (4) sides of unit for cover removal and service access.
- ◆ The product water tubing/piping and associated fittings connecting the RO product outlet to the serviced equipment should be suitable for use with high purity water.

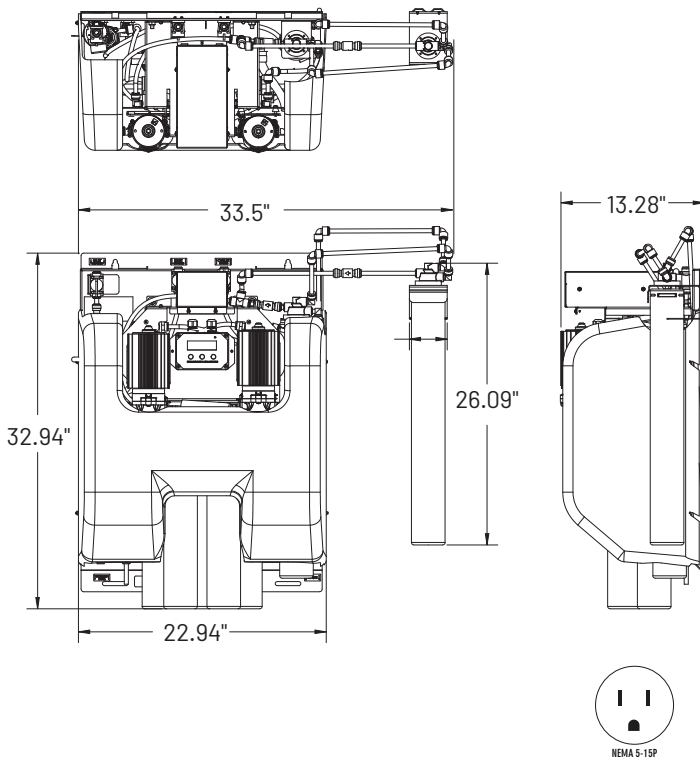
OPERATION TIPS

- ◆ Change cartridges when capacity is reached or pressure decreases.
- ◆ Always flush the filter cartridge at time of installation and cartridge change.
- ◆ For more details, see the installation, operation, and maintenance guide included with the system.

*As tested by Pentair.

MRS-600HE-II WITH 2ND MEMBRANE KIT

EV997046 with EV996900 or EV997000



SPECIFICATIONS

System

Overall Dimensions

33" H x 33.5" W x 13.28" D
(83.8 x 85.1 x 33 cm)
Add 3" (7.6 cm) on all 4 sides for cover removal and service access

Connections

Inlet: 3/8" OD PTC (Push to Connect)
Outlet: 3/8" OD PTC
Wastewater: 3/8" PTC

Operating Pressure (non-shock)

25 - 80 psi (1.72 - 5.52 bar),
Pressure below 50 psi (3.45 bar) may affect blend system performance

Maximum Static Pressure

100 psi (6.89 bar), non-shock

Minimum Water Supply

2.0 gpm (7.6 Lpm)

Water Temperature

40 - 100°F (4.4 - 38°C)

Operating Weight

120 lbs (54.5 kgs)

Shipping Weight

110 lbs (50 kgs)

Electrical Connection

USA 110-120 VAC/50-60 Hz
NEMA 5-15P

Performance

Inlet TDS

1,000 ppm max. recommended

Daily Production Rate

507 gpd (1,921 Lpd) nominal;
internally tested with second membrane at 900 gpd (3,406 Lpd)* (plus blend water addition). Total daily production rate will vary based on water temperature, pressure, TDS, RO percent rejection and desired blend water TDS. Contact Pentair for assistance estimating this total.

Service Flow Rate

Dependant on water pressure in storage tank and line size(s) to equipment

TDS Reduction

Yes

Chlorine Reduction

Yes*

Taste & Odor Reduction

Yes*

*As tested by Pentair.

For Pentair Everpure Product Warranties visit:
<http://pentair.com/assets/foodservice-warranty>.
To receive a free copy email or call your Pentair representative using the information provided below.

It is recommended that filter cartridges be replaced every six (6) months on a regular scheduled program, or when capacity is reached or if water pressure or flow to equipment becomes inadequate.

Always replace filter cartridges and RO membranes at least once per year.

Do not use with water that is microbiologically unsafe or of unknown quality without adequate disinfection before or after the system.

REPLACEMENT CARTRIDGES & KITS

Model	Description	Part No
MR-600F Cartridge	RO membrane	EV962722
7FS-BW Cartridge	Prefilter	EV962716
7F Cartridge	Post filter	EV965410
2nd RO Membrane Kit	New stores	EV996900
2nd RO Membrane Kit	Retro-fit for existing systems	EV997000



System Tested and Certified by NSF International against ASSE/ANSI 1087 and NSF/ANSI Standard 58 for the reduction of Total Dissolved Solids (TDS).



1040 Muirfield Drive | Hanover Park, IL 60133 | 800.942.1153 (US Only) 630.307.3000 Main | cseverpure@pentair.com | foodservice.pentair.com

All indicated Pentair trademarks and logos are property of Pentair. Third party registered and unregistered trademarks and logos are the property of their respective owners.

©2026 Pentair. All rights reserved.

EV996900 JE26