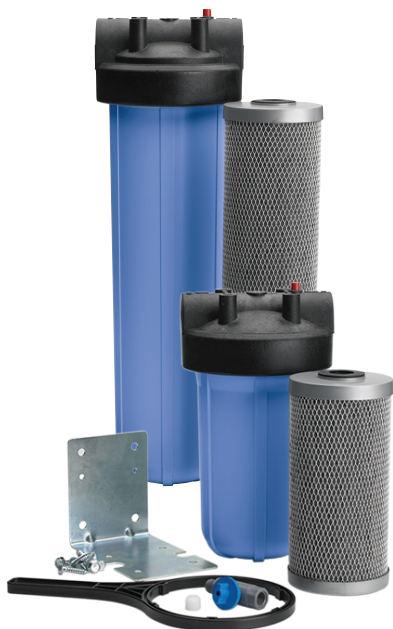


FLOPLUS HEAVY DUTY

FILTRATION SYSTEMS



FEATURES • BENEFITS

- ◆ Whole house chlorine and bad taste & odor reduction
- ◆ NSF/ANSI Standard 53 certified to reduce cysts such as *Cryptosporidium* and *Giardia* by mechanical means
- ◆ Maximum filtration with minimal pressure drop
- ◆ Integrated drain for easier cartridge change-outs
- ◆ Available in two sizes to meet inlet/outlet and gpm requirements

EPA Est. No. 090375-MEX-001

INSTALLATION TIPS

- ◆ Choose a mounting location suitable to support the full weight of the system when operating
- ◆ Make sure to properly lubricate O-ring prior to use
- ◆ Use 3/4" water line (optional reducer bushings included)
- ◆ Install vertically with bowl hanging down
- ◆ Allow 2-1/2" (6.35 cm) clearance below the cartridge for easy cartridge replacement

OPERATION TIPS

- ◆ Replace cartridge if flow rate decreases
- ◆ Do not exceed service flow rate
- ◆ Inspect O-ring during each cartridge change
Lubricate and/or replace if necessary

INCLUDES

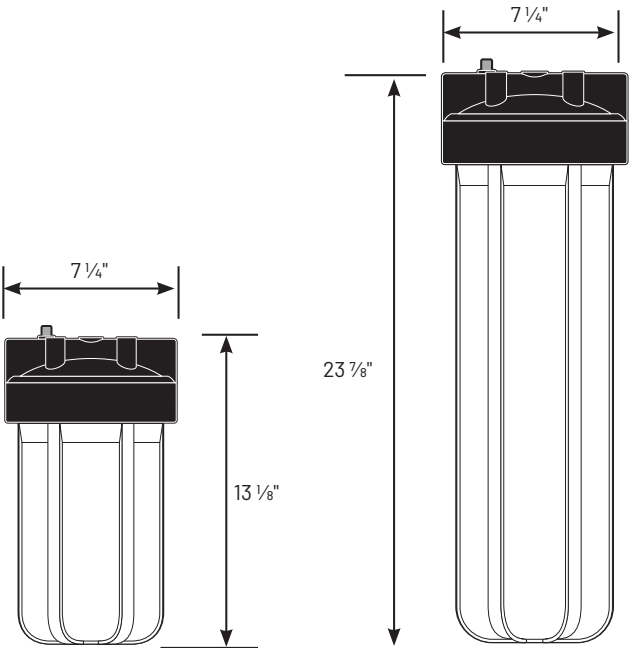
- ◆ Filter housing and cartridge
- ◆ Wrench
- ◆ Installation kit
- ◆ Installation and operation manual

FLOPLUS HEAVY-DUTY FILTRATION SYSTEMS

SPECIFICATIONS AND PERFORMANCE

Part #	Dimensions H x D	Micron Rating (Nominal) µ	Flow Rate	Initial ΔP (psi) @ Flow Rate (gpm)*	Chlorine Taste & Odor Reduction @ Flow Rate (gpm)*	Inlet/Outlet	Cartridge Size H x D
152094	13 1/8" x 7 1/4" (333 mm x 184 mm)	0.5	10 gpm (37.8 Lpm)	4 psi @ 2 gpm (0.28 bar @ 7.6 Lpm)	>25,000 gal @ 2 gpm (94,635 L @ 7.6 Lpm)	1" NPT	9 3/4" x 4 5/8"
152095	23 7/8" x 7 1/4" (606 mm x 184 mm)	0.5	25 gpm (94.6 Lpm)	4 psi @ 4 gpm (0.28 bar @ 15.2 Lpm)	>50,000 gal @ 4 gpm (189,270 L @ 15.2 Lpm)	1 1/2" NPT	20" x 4 5/8"

*Based on internal testing



152094		152095	
10" Cartridge	455905-43	20" Cartridge	455906-43
Mounting Bracket	SH244718	Mounting Bracket	SH244718
Wrench (SW-3)	SH144368	Wrench (SW-4)	SH144368
Drain Kit	244736	Drain Kit	244736



The Models FPS-10BB and FPS-20BB are Tested and Certified by NSF International against NSF/ ANSI Standards 53 for the reduction of substances specified in the performance data sheet or at www.nsf.org.



Pentair Residential Filtration
13845 Bishops Dr. | Suite 200 | Brookfield, WI 53005 | United States
P: 262.238.4400 | Customer Service: 800.279.9404 | tech-support@pentair.com | pentair.com

All indicated Pentair trademarks and logos are property of Pentair. Third party registered and unregistered trademarks and logos are the property of their respective owners.