



# INTELLISYNC® CONTROL AND MONITORING SYSTEM QUICK START GUIDE



iOS mobile: Scan the bar code or go to the Apple Store to download the Pentair Home app.



Android mobile: Scan the bar code or go to the Google Store to download the Pentair Home app.

## STEP 1: Download Pentair Home App

Pentair Home is a free app is available for iPhone®, iPad® and iPod touch® mobile digital devices at iTunes® or at Google Play® for all Android™ devices.

## STEP 2: Sign Up, Create an Account and Login

1. Open the Pentair Home app icon on your mobile device.
2. From the Login page, tap **Sign Up** to create a new account. If you have already registered: Enter your Email address and password.
3. On the **SIGN UP** page enter your Email address and a strong Password. All Green check marks meets the strong password requirements (! # \$ & ' ( ) \* + comma ? : = ? @ [ ] space are acceptable password special characters).
4. Tap the check box next to "I have read the Privacy Policy and agree to the Terms and Services".
5. Tap **CREATE AN ACCOUNT**. Tap **SEND VERIFICATION** to send a verification Email to your registered Email account. You will receive an Email from **no-reply@verificationemail.com**. Select **Verify Email Address** to confirm your account. A message is displayed indicating your registration has been confirmed. Tap **Login** (top right of screen).

## STEP 3: Create your Account Profile

1. **CREATE PROFILE:** Enter your name, country, primary address, city, phone number. Add your location on the map shown. Note: If needed, you can enter multiple pool, spa, map locations.
2. Select **STANDARD** or **METRIC UNITS**. Tap **SAVE** to save your account profile information.
3. From the **ACCOUNT** Dashboard screen. Tap **Add a Device** to add your IntelliSync device. Tap Home (lower left icon) to return to the Dashboard.



1 Email

joe.smyth@pentair.com

Password

.....

At least 8 characters  
1 upper case letter  
1 number  
1 special character

I have read the **Privacy Policy** and agree to the **Terms and Conditions**.

I would like to receive product updates and special offers.

**CREATE AN ACCOUNT**

2

### Log In

**Skip the Typing**

We can email you a magic sign-in link that will log you into the app without typing in your password.

**LOG IN BY EMAIL**

**USE PASSWORD**

Don't have an account? **SIGN UP**

3 **Create profile**

Email

joe.smyth@pentair.com

First Name

joe

Last Name

smyth

Company Name

Pentair

Country

United States

Apple® and App Store® are registered trademarks of Apple Inc. in the United States and/or other countries. iOS® is a registered trademark of Cisco Technology, Inc. in the United States and/or other countries. Google Play® and Android® are registered trademarks of Google LLC in the United States and/or other countries. The Bluetooth® word mark and logo are registered trademarks of Bluetooth SIG, Inc. in the United States and/or other countries.

## STEP 4: Connecting your Mobile Device to your home network

1. **Dashboard:** After login: Tap **Add a Device** (water drop icon) then tap **IntelliSync** to add this device to your mobile device.
2. **IntelliSync™ unit:** Slide the top cover upward. Press and hold the **MODE** button for 10-seconds until the **CONNECTION LED** is blinking. IntelliSync is ready for *Bluetooth®* wireless technology pairing.
3. **Turn on Bluetooth on your mobile device:** On the **Add a Device** page, tap IntelliSync.
4. Tap **CONTINUE**. **SCANNING...** is displayed. Tap **PNRXXXXXX** (Device ID identifies IntelliSync). Tap **CONTINUE**. IntelliSync (device) is now paired with your mobile device.
5. **Connect to WiFi 2.4 GHz Router:** Tap on the name (SSID) of your home network and enter the password. Tap **CONTINUE** to connect to your home network. **"WiFi Data Sent"** is displayed. Enter your home network password, then tap **CONNECT**. **Installation Completed** displays. Tap **CONTINUE**. The Profile page displays. Tap the location of your pool then tap **SAVE**.
6. Tap **CONTINUE** when **"Installation Completed"** is displayed. The IntelliSync Control and Monitoring System profile and location page is displayed. **IntelliSync:** Select the street Address where your IntelliSync Control and Monitoring System is located. You can also add another location on the displayed map. **MY DEVICES** page displays. Continue to **Add a Device**.

## STEP 5: Add a Device

1. **My Devices:** Tap the **Product Device** name (IntelliSync) to display the **Add Devices** page.
2. **Add Devices:** Tap the device name to connect the selected device (IntelliFlo®, SuperFlo® VS pumps). **Supported Devices (see Installation Guide for complete list):** For one body of water, one IntelliSync supports two pumps (IntelliFlo and SuperFlo VS), and a water and air temperature sensor.

## Dashboard Controls



**Dashboard Home page.**  
Displays installed devices. Tap Home from other pages to return to Dashboard.



**My Devices:**  
Display installed devices. Tap a device to access device settings.



**Weekly event schedules.**



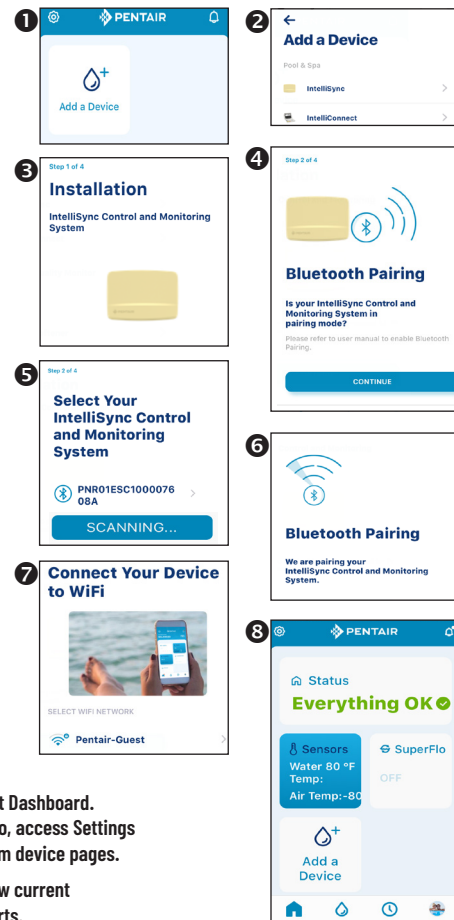
**Account page.**  
Edit Profile, Notifications.



**Edit Dashboard.**  
Also, access Settings from device pages.



**View current Alerts.**



Dashboard

