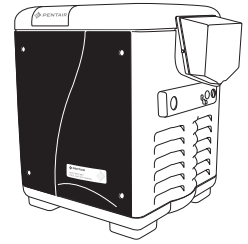




MASTERTEMP® HEATER PRESSURE RELIEF VALVE KIT [P/N 460925] AND RODENT RESISTANT KIT



FAILURE TO FOLLOW ALL INSTRUCTIONS AND WARNINGS CAN RESULT IN SERIOUS BODILY INJURY OR DEATH. THIS PRODUCT SHOULD BE INSTALLED AND SERVICED ONLY BY A QUALIFIED POOL SERVICE PROFESSIONAL. INSTALLERS, POOL OPERATORS AND OWNERS MUST READ THESE WARNINGS AND ALL INSTRUCTIONS IN THE HEATER INSTALLATION AND USER'S GUIDE BEFORE USING THIS PRODUCT. THESE INSTRUCTIONS MUST BE LEFT WITH THE POOL OWNER.

Warnings and safety instructions for Pentair Water Pool and Spa, Inc. pumps and other related products are available at: <http://www.pentairpool.com/safety-warnings> Call (800) 831-7133 for additional free copies of these instructions.

PRESSURE RELIEF VALVE KIT INSTALLATION INSTRUCTIONS

IMPORTANT SAFETY INSTRUCTIONS

READ AND FOLLOW ALL INSTRUCTIONS - SAVE THESE INSTRUCTIONS

Pressure Relief Valve Kit includes the following:

- Pressure Relief Valve (P/N 473715) Qty. 1
- Brass Elbow 90° (P/N 472619) Qty. 2
- 3/4" x 3.5" Brass Nipple (P/N 474169) Qty. 1
- 3/4" x 2.5" Brass Nipple (P/N 473689) Qty. 1
- 3/4" x 2.0" Brass Nipple (P/N 473688) Qty. 2
- Installation Instructions These instructions

PRESSURE RELIEF VALVE (NOT FACTORY INSTALLED)

Canadian code requires and some U.S. local codes may require installation of a Pressure Relief Valve (PRV). Purchase separately and install a 3/4" pressure relief valve complying with the ANSI/ASME Boiler and Pressure Vessel Code, having a capacity equal to the Btu/hr rating of the heater. The relief pressure of the valve **MUST NOT EXCEED 50 PSI**. The relief valve must be installed vertically. To install the valve, use a 3/4" x 3.5" brass nipple at the manifold, two brass elbows and three nipples (provided in kit), see Figure 2 on next page. No valve is allowed to be placed between the manifold adapter and the relief valve. To avoid water damage or scalding from operation of the relief valve, install a drain pipe in the outlet of the pressure relief valve that will direct water discharging from the valve to a safe place for disposal. Do not install any reducing couplings or valves in the drain pipe. The drain pipe must be installed so as to allow complete drainage from the valve and drain line. ***The relief valve should be tested at least once a year by lifting the valve lever.***

WARNING Explosion hazard. Any heater installed with restrictive devices in the piping system downstream from the heater, (including check valves, isolation valves, flow nozzles, or therapeutic pool valving), must have a relief valve installed as described above.

Pressure Relief Valve Installation

When installing this kit, **basic safety precautions** should always be followed. Read and follow all instructions.

Required items:

- Threaded Seal Tape
- Pipe Wrench

STEP 1: Remove Service panel (with rodent resistant insert) from Heater:

1. Remove the three retaining screws from the heater front panel. Remove the small front split-panel with the rodent resistant insert. **See Figure 1.**
2. Slide the service panel up while leaving the insert over the water pipes. The insert cannot be removed without disconnecting the water pipes.
3. Remove the “knock-out” from the split-panel, see Figure 1.

Continue to Step 2 on page 3.

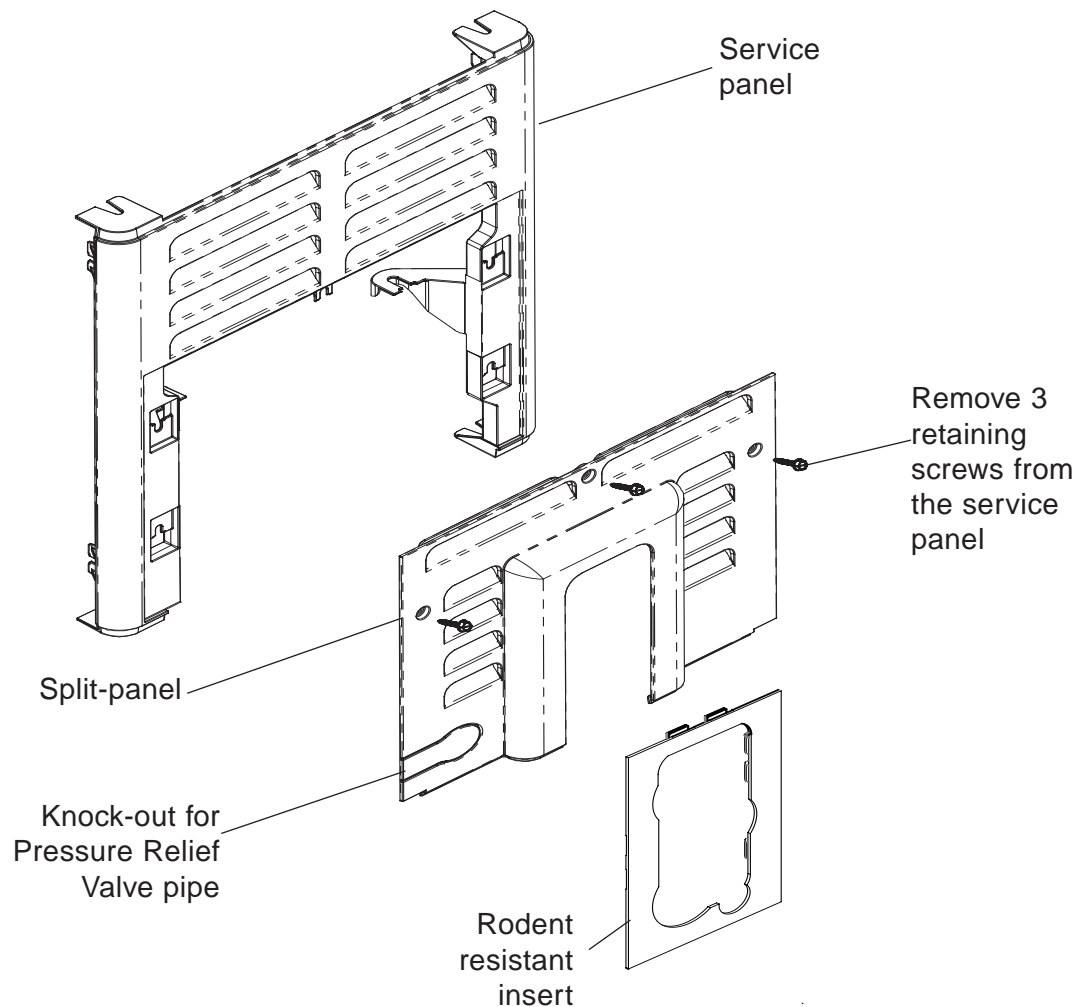


Figure 1.

Pressure Relief Valve Installation

STEP 2: Install Pressure Relief Valve

1. Wrap threaded sealing tape clockwise around all the brass threads before starting.
2. Connect the 3.5" brass nipple into the manifold head threads. Use a wrench to tighten. Do not overtighten. **See Figure 2.**
3. Attach the 90° brass elbow onto the end of the 3.5" brass nipple. Using a wrench, hold the 90° elbow and with another wrench, tighten the elbow onto the 3.5" nipple.
4. Attach the 2.5" brass nipple onto the 90° elbow. Use a wrench to tighten. Do not overtighten.
5. Attach the 90° brass elbow onto the end of the 2.5" nipple.
6. Attach the 1.5" brass nipple onto the 90° elbow.
7. Connect 1.5" brass nipple to the Relief Valve drain outlet. Connect the valve to 1.5" brass vertical nipple. Use a wrench to tighten. Do not overtighten.
8. **Install the Water Pipe Escutcheon. See page 4.**

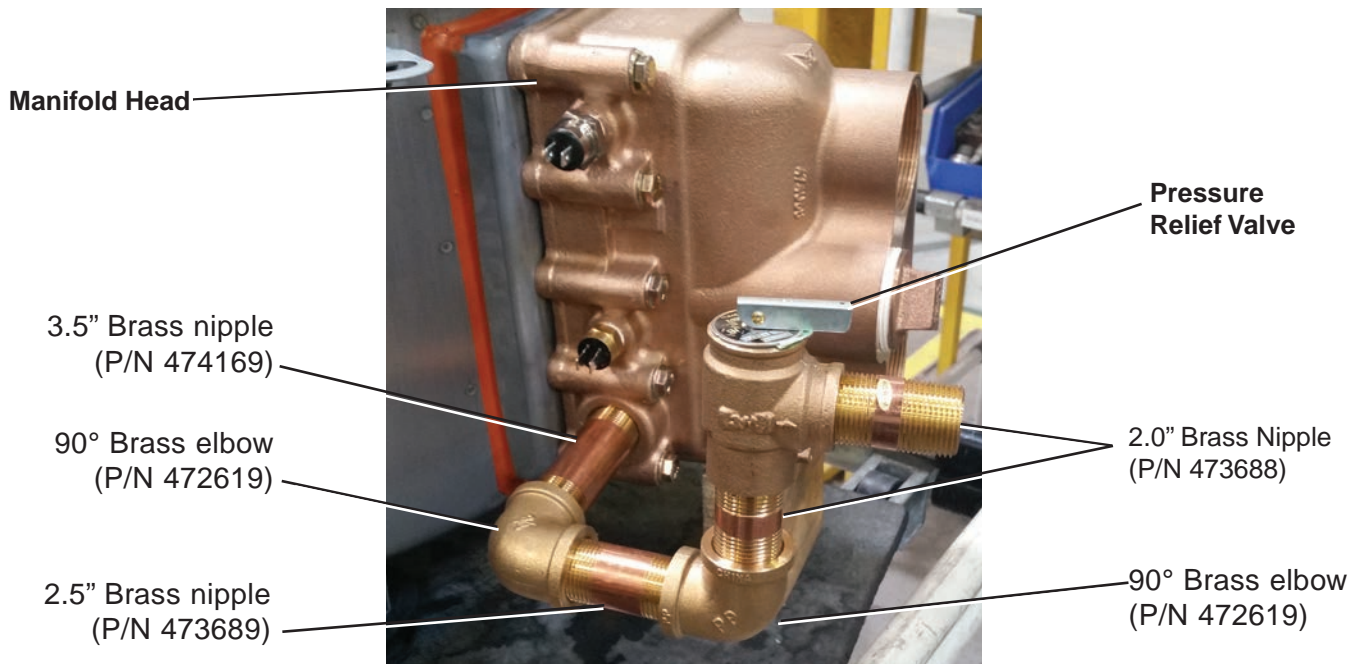


Figure 2.

Water Pipe Escutcheon Installation

STEP 3: Install Exit Water Pipe

9. Reinstall the service panel (with split-panel and rodent resistant insert). See Figure 1 on page 3.
 - Reinstall the split-panel so that the clips on the back of the insert capture the insert against the service panel.
 - Slide the service panel down such that the clips on the back of the insert capture the insert against the service panel.
 - Secure the panel with the three retaining screws.
10. Place the water escutcheon over the exit water pipe, see Figure 3.
11. Install the exit pipe, see Figure 3.
12. Slide the escutcheon flush against the heater panel.
13. Hand-tighten the retention screw to secure the escutcheon in place.

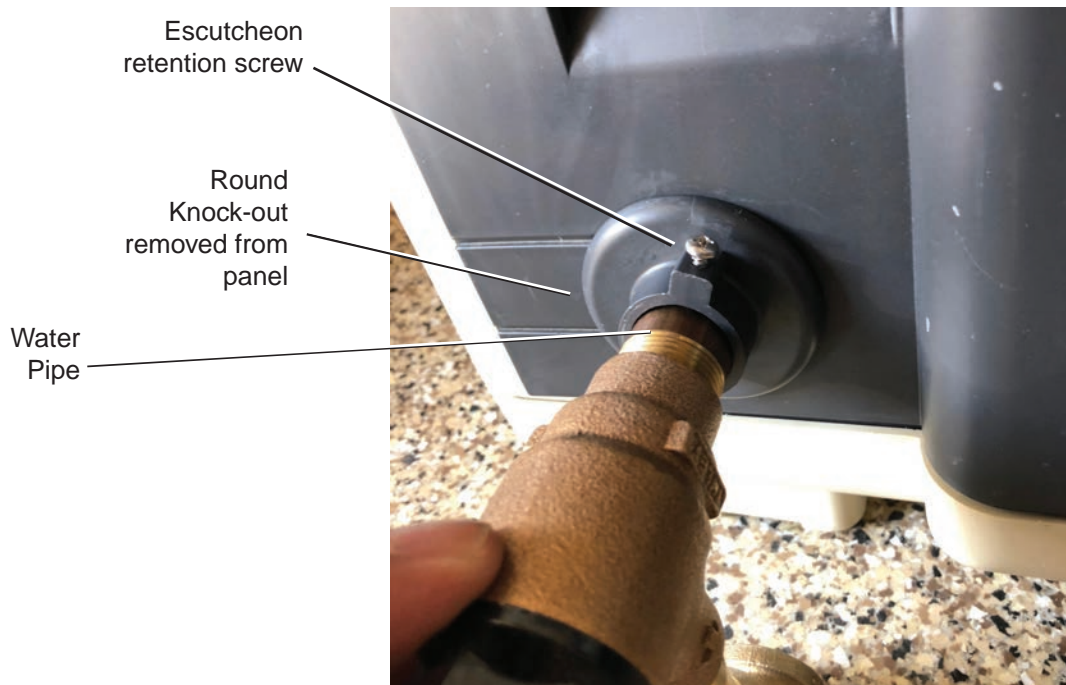


Figure 3. Escutcheon installed on **Pressure Relief Valve** water pipe. Be sure the escutcheon covers the circular opening in heater panel.

Escutcheon Parts List

P/N 467107Z - Escutcheon

P/N 270114Z - Phillips Screw (#8), for Escutcheon (use with P/N 467107Z)

P/N 462037Z - Water manifold insert, standard MasterTemp heater only

P/N 462038Z* - Water manifold insert, ASME MasterTemp heater only

(*) For ASME heaters P/N 462038Z is used instead of P/N 462037Z.

1620 HAWKINS AVE., SANFORD, NC 27330 • (919) 566-8000

10951 WEST LOS ANGELES AVE., MOORPARK, CA 93021 • (805) 553-5000 Technical Support: 800.831.7133 www.pentair.com

MasterTemp® is a registered trademarks of Pentair Water Pool and Spa, Inc. and/or its affiliated companies in the United States and/or other countries. © 2018 Pentair Water Pool and Spa, Inc. All rights reserved. This document is subject to change without notice.



P/N 474451 Rev D 2/2019