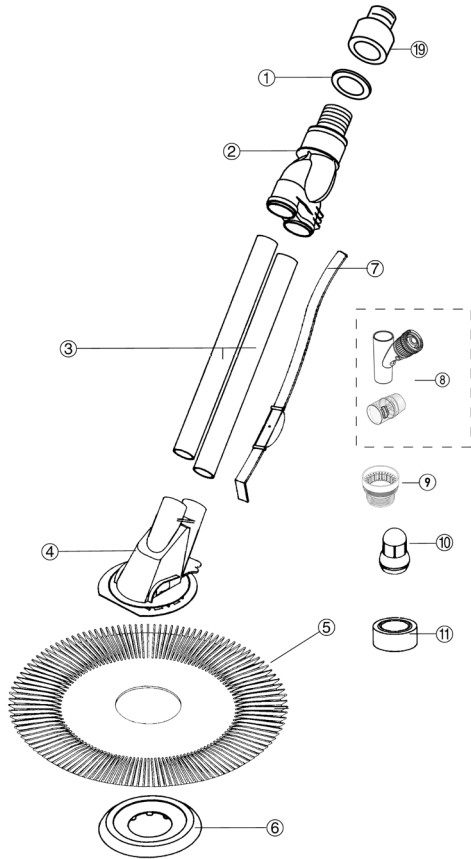


# KREEPY KRAULY® E-Z VAC®

## CLEANER REPLACEMENT PARTS



Item	Part No.	Description
<b>E-Z VAC REPLACEMENT PARTS</b>		
1	K12087	Bearing Washer
2	K12653	Swivel Head Assembly
3	K12654	Drive Tube Top/Bottom (1)
4	K12650	Main Body (Excludes Flapper)
5	K12651	Aboveground Seal
6	K12059	Foot Pad
7	K12655	Bumper Strap with weight
8	41200-0214	Regulator Valve
9	K12079	Threaded Compression Adapter
10	K121680	Eyeball Diverter
11	K12657	Hose Weight
12	K121683	Eyeball Diverter Outer Ring
13	K12649	Baffle Plate (not interchangeable with Kreepy Krauly inground)
14	K121620	Wire Diverter
18	K21241B	4 in. Female/Female Blue Hose Connector
18	K21241	4 in. Female/Female Hose Connector (White)
19	K12653C	Swivel Cone and Bearing Washer

**K50659** Complete Hose Assembly - Blue (After 3-16-10)

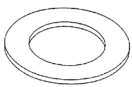
(12 Sections Male/Female)

**K50656** Complete Hose Assembly - Blue (Before 3-16-10)

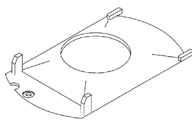
(32 ft. total length)

- 11 Sections Male/Female Hose
- 1 Section Female/Female Hose

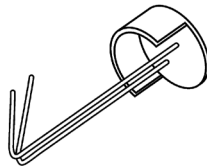
**K121683**  
Eyeball Diverter  
Outer Ring



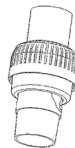
**K12649**  
Baffle Plate



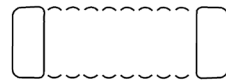
**K121620**  
Wire Diverter



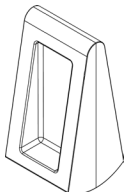
**K12142B**  
Vacuum Line  
Valve Kit



**K21241B**  
3" Female/Female Blue  
Hose Connector  
**K21241(White)**



**K70081**  
Flow Valve/Flapper - Teal



**K12041**  
Cone Adapter 1-1/4"-2"  
Optional

