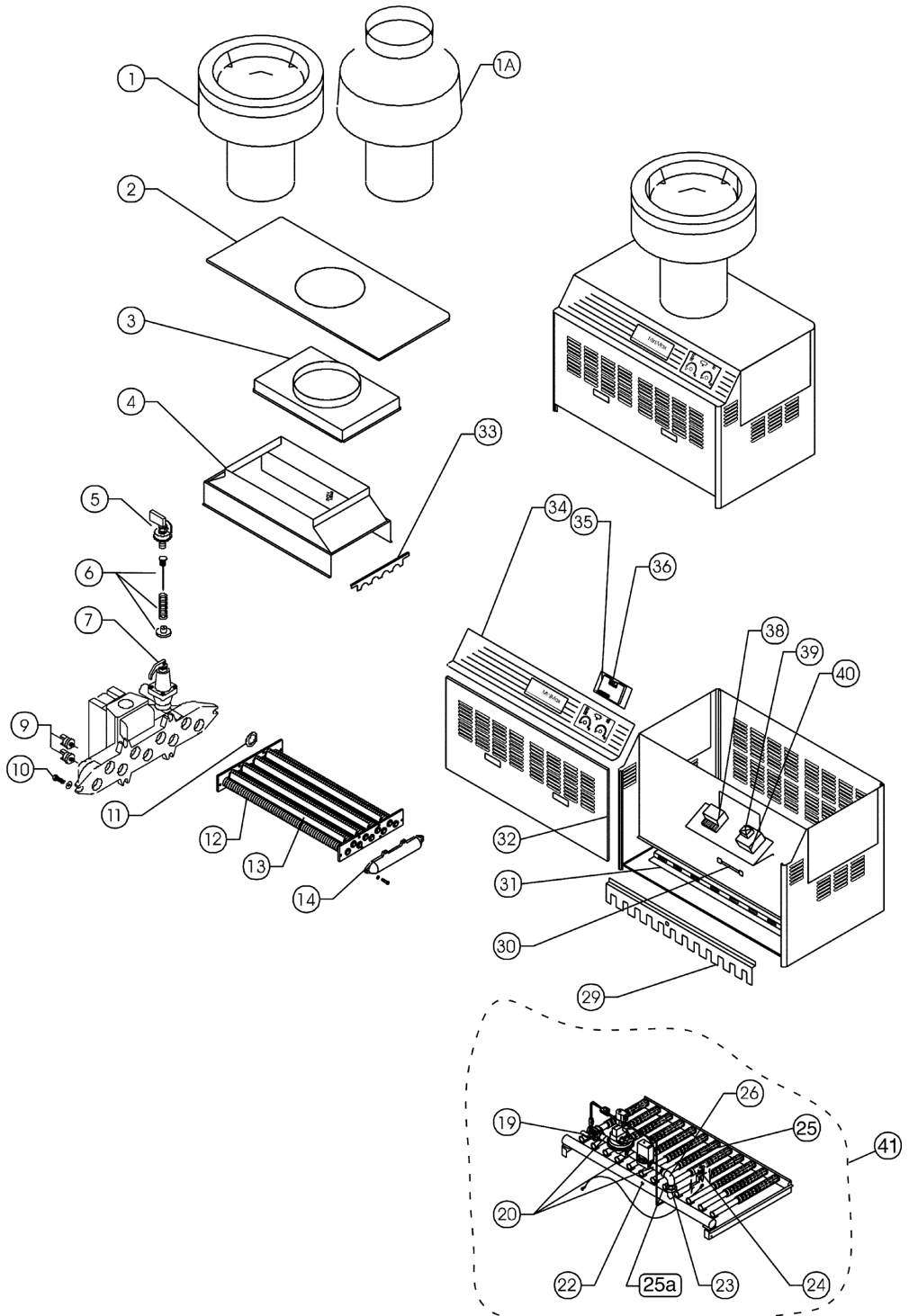


# MINIMAX® COMMERCIAL HEATER

MANUFACTURED PRIOR TO JULY 2006 - REPLACEMENT PARTS



In January 1996, the circuit boards for MiniMax Heaters were changed at the terminals by request of the American National Standard Institute (ANSI) and the American Gas Association (A.G.A.), the two approval agencies for the manufacturing of gas heaters in the United States. If you have a heater manufactured before January 1, 1996 and you receive a newer circuit board with the smaller terminals and the older thermistor has larger connectors, the larger connectors can be crimped so they will fit tight on the newer circuit board terminals, contact a Pool Service Professional for details.

# MINIMAX® COMMERCIAL HEATER (CONT'D)

## REPLACEMENT PARTS

Item	Description	Part No.
<b>MINIMAX® COMMERCIAL HEATER</b>		
1	Outdoor vent cap kit * (Model 525)	460226
1	Outdoor vent cap kit * (Model 750)	460318
1	Outdoor vent cap kit * (Model 900)	460319
1A	Indoor draft hood kit * (Model 525)	460321
1A	Indoor draft hood kit * (Model 750)	460320
1A	Indoor draft hood kit * (Model 900)	460234
5	Pressure switch	470190
6	Flow valve assembly (Model 525)	470747
6	Flow valve assembly (Model 750)	471114
6	Flow valve assembly (Model 900)	471115
7	Pressure relief valve (Model 525)	470768
9	Hi-limit switch (Model 525)	071017
10	Bolts (Model 525)	470966
11	Rubber seal (Model 525)	470742
12	Heat exchanger assembly (Model 525)	470735
12	Heat exchanger assembly (Model 750)	470736
12	Heat exchanger assembly (Model 900)	470737
13	Baffle (Model 525)	470645
13	Baffle (Model 750)	470646
13	Baffle (Model 900)	470647
14	Return header	470745
16	Pilot valve (Model 900)	470770
17	Pilot regulator natural (Model 900)	470771
18	Pilot manual valve (Model 900)	470772
19	Main shut-off valve	470773
22	Manifold (Model 750)	470653
24	Pilot Q345A2816 natural	471204
24	Pilot Q345A2824 propane	471205

Item	Description	Part No.
25	Burner, 525 - 7 req., 750 - 10 req., 900 - 12 req.	471537
25A	Burner w/ pilot bracket	471545
27	Gas valve diaphragm natural (Model 900)	470687
28	Gas valve solenoid 900 (Model 900)	470688
28	Gas valve natural (Model 525 & 750)	470891
28	Gas valve propane (Model 525 & 750)	470892
29	Retainer shield (Model 525)	470792
29	Retainer shield (Model 900)	470794
30	Thermal cut-off	075173
33	Baffle hold down	470799
34	Control panel (Model 525)	470753
34	Control panel (Model 750)	470754
34	Control panel (Model 900)	470755
35	Thermostat board	470179
36	Rocker switch	470186
38	Module IID S8600F natural	073584
38	Module IID S8600H propane	073585
39	Transformer	471571
40	Junction box	471426
41	Burner tray assembly natural (Model 525)	470648
41	Burner tray assembly natural (Model 750)	470649
41	Burner tray assembly propane (Model 750)	470669
41	Burner tray assembly natural (Model 900)	470650
<b>NOT SHOWN</b>		
	Drain valve	072134
	Thermistor (probe) complete	470180
	Stem, thermostat control	470181
	Knob, thermostat	470184

\* Choice of one vent kit, item No. 1 or No. 1A, provided at no charge with initial commercial heater purchase.

\*\* Item No. 21, hi-tension wire, is now part of pilot assembly, item No. 24.