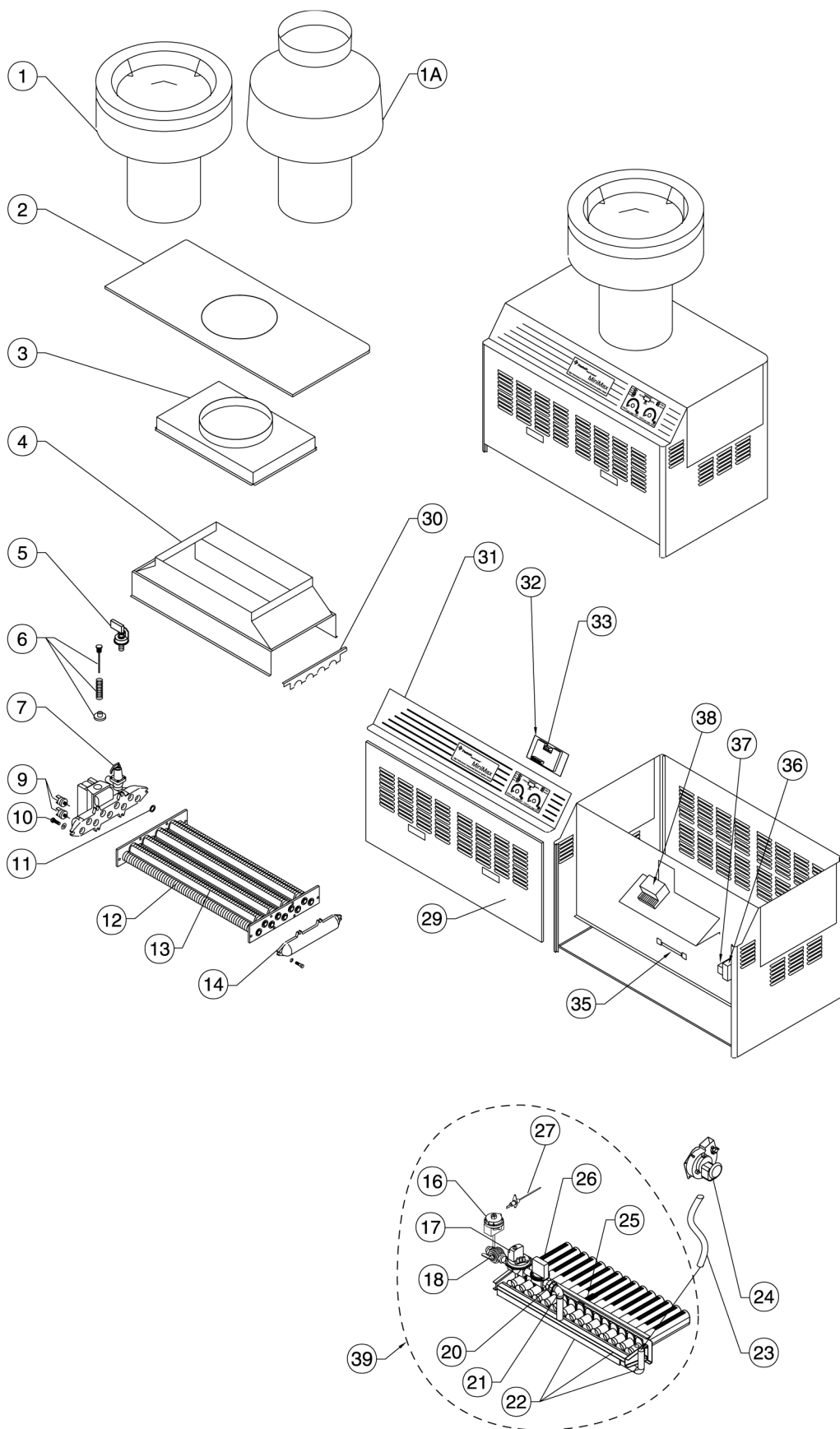


MINIMAX[®] COMMERCIAL LOW NOX HEATER

REPLACEMENT PARTS



MINIMAX[®] COMMERCIAL LOW NOX HEATER (CONT'D)

REPLACEMENT PARTS

Item	Description	Part No.
MINIMAX [®] COMMERCIAL LOW NOX HEATER		
1	Outdoor vent cap kit (Model 525) ¹	460226
1	Outdoor vent cap kit (Model 750) ¹	460318
1	Outdoor vent cap kit (Model 900) ¹	460319
1A	Indoor draft hood kit (Model 525) ¹	460321
1A	Indoor draft hood kit (Model 750) ¹	460320
1A	Indoor draft hood kit (Model 900) ¹	460234
5	Pressure switch	470190
6	Flow valve assembly (Model 525)	470747
6	Flow valve assembly (Model 750)	471114
6	Flow valve assembly (Model 900)	471115
7	Pressure relief valve (Model 525)	470768
9	Hi-limit switch	071017
10	Bolts	470966
11	Rubber seal	470742
12	Heat exchanger assembly (Model 525)	470735
12	Heat exchanger assembly (Model 750)	470736
12	Heat exchanger assembly (Model 900)	470737
13	Baffle (Model 525)	470645
13	Baffle (Model 750)	470646
13	Baffle (Model 900)	470647
14	Return header	470745
16	Low gas pressure switch	471506
17	Gas valve diaphragm natural (Model 525 & 750)	471501
17	Gas valve diaphragm natural (Model 900)	471500
18	Main shutoff valve	470773
19	Gas valve solenoid (Model 900)	470688
22	Gas & air manifold assembly (Model 750)	471473

Item	Description	Part No.
23	Air supply pipe	471498
24	Blower	471481
25	Hot surface ignition	471491
26	OVO burner, qty. 7	471471
27	Remote sense electrode	473483
30	Baffles hold down	470799
31	Control panel (Model 525)	470753
31	Control panel (Model 750)	470754
31	Control panel (Model 900)	470755
32	Thermostat board	470179
33	Rocker switch	470186
35	Thermal cut-off	075173
36	J-box	471426
37	Transformer	471571
38	Ignition module	471492
39	Burner tray assembly (Model 525)	471482
39	Burner tray assembly (Model 750)	471483
39	Burner tray assembly (Model 900)	471484

¹ Choice of one vent kit, item No. 1 or No. 1A, provided at no charge with initial commercial heater purchase.