




HYPRO[®]

Model D30HGRI, D403HGRI, & D503HGRI Diaphragm Pump, Controller, & Gearbox Kits

Form L-1525
Rev. B

 **California Proposition 65 Warning** -- This product and related accessories contain chemicals known to the State of California to cause cancer, birth defects or other reproductive harm.

Installation Instructions

Note:

Please consult separate documents for preparing the gas engine and diaphragm pump for service.

1. Install pinion gear and key onto gas engine shaft. Insert 5/16" bolt into pinion to secure gear onto crankshaft. (See Figure 1.) Apply Loctite 242 to threads prior to installation. Torque bolt to 12-16 ft.-lbs. (See Figure 2.)
2. Install o-ring into groove of gas engine flange. (See Figure 3.)
3. Slide pump and gearbox over pinion gear. The pinion may need to be rotated to align the gears. Secure to gas engine with 5/16" bolts. Apply Loctite 242 to screw threads prior to assembly. Torque screws to 12-16 ft.-lbs. (See Figure 4.)
4. Fill gearbox with SAE 80/90 gear lube until the lube appears at the side pipe plug hole (approximately 20 ounces required to fill to side). Insert and tighten remaining side pipe plug and breather. Teflon tape or pipe sealant is recommended.



Fig. 1



Fig. 2

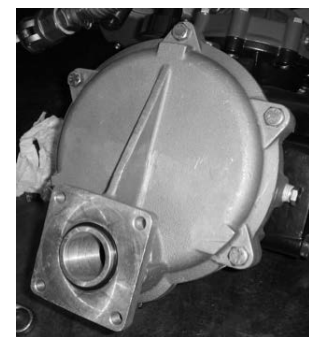


Fig. 3

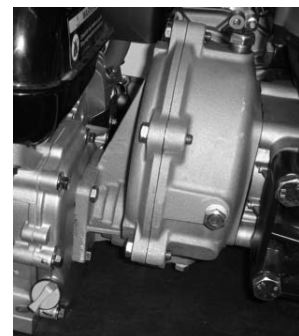
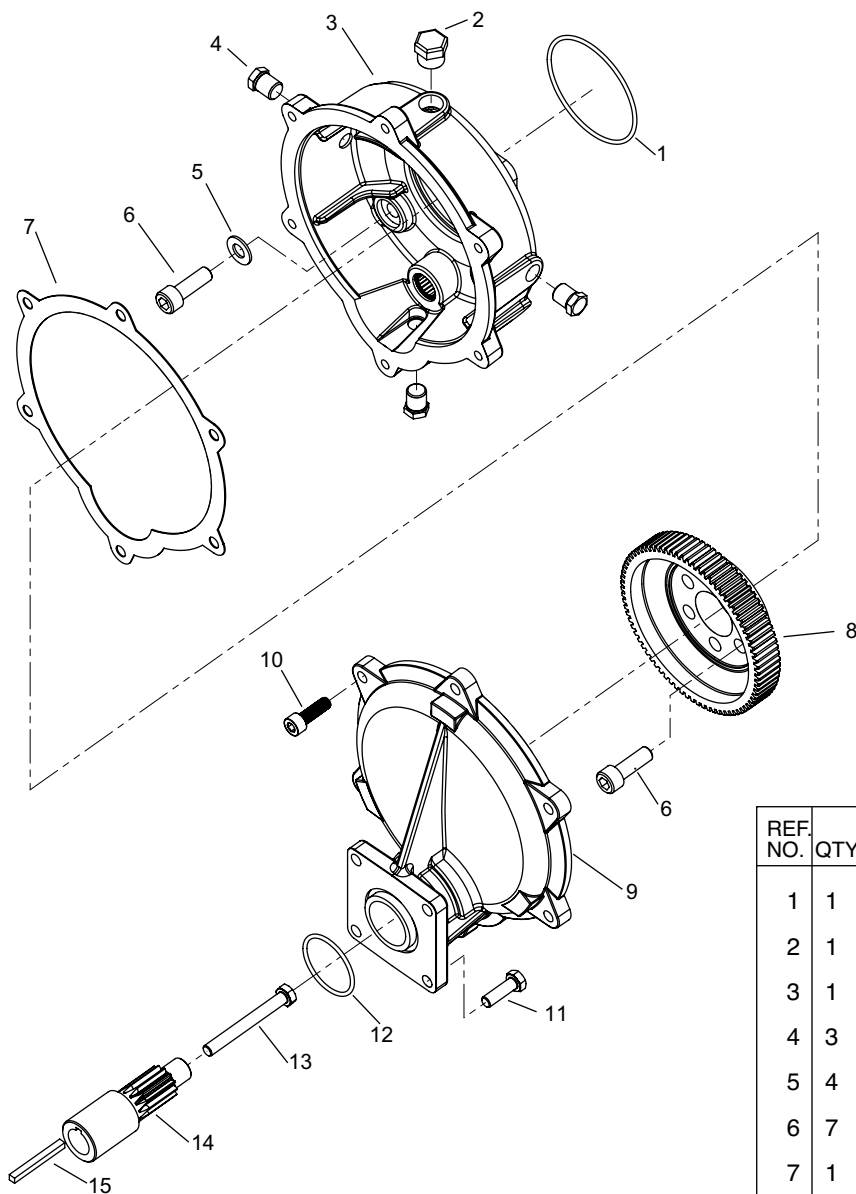


Fig. 4

Parts List



REF. NO.	QTY.	PART NO.	DESCRIPTION
1	1	1720-0086	O-Ring
2	1	1450-0020	Vent Breather Cap, 3/8" NPT
3	1	0701-D403A	Gear Box, Body Sub Assy.
4	3	2406-0019	Pipe Plug
5	4	2270-0117	Washer, M10
6	7	2220-0116	SH Cap Screw, M10x1.0x30mm
7	1	1710-0016	Cover Gasket
8	1	3900-0054D	Machined Gear
9	1	0700-D403A	Mounting Flange
10	6	2220-0118	SH Cap Screw, M8x1.25x25mm
11	4	2210-0077	Hex Head Cap Screw, 5/16"-24 x 1"
12	1	1720-0243	O-Ring
13	1	2210-0151	Hex Head Cap Screw, 5/16"-24 x 2-3/4"
14	1	3900-0055	Driver Gear
15	1	1610-0064	Key



375 Fifth Avenue NW • New Brighton, MN 55112 USA
 Phone: (651) 766-6300 • 800-424-9776 • Fax: 800-323-6496
www.hypropumps.com