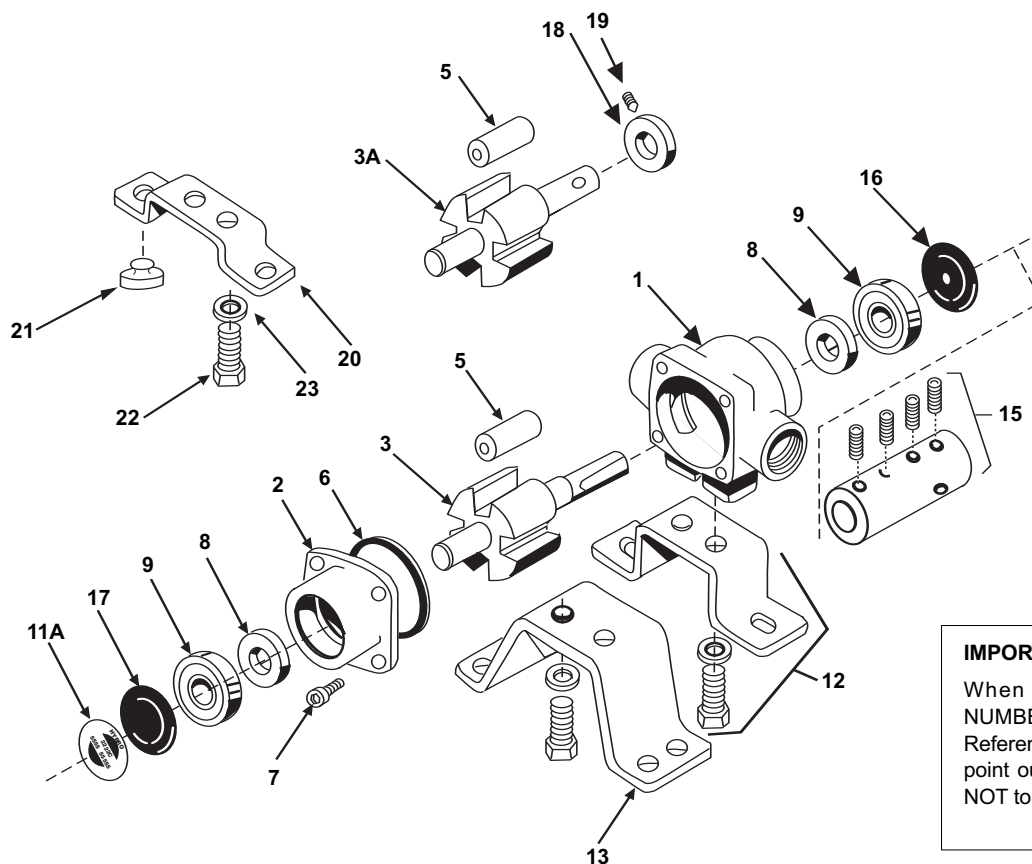


## Series 4000



**IMPORTANT:**

When ordering parts, give PART NUMBER and PART DESCRIPTION. Reference Numbers are used ONLY to point out parts in the drawing and are NOT to be used as ordering numbers.

| Ref. No. | Qty. Req'd. | Part Number | Description                                 |
|----------|-------------|-------------|---|
| 1        | 1           | 0100-4001C  | Body (Cast Iron) with Std. Seal (4001)      |
| 1        | 1           | 0100-4101C  | Body (Cast Iron) with Std. Seal (4101)      |
| 1        | 1           | 0100-4001N  | Body (Ni-Resist) with Std. Seal (4001)      |
| 1        | 1           | 0100-4101N  | Body (Ni-Resist) with Std. Seal (4101)      |
| 1        | 1           | 0100-4001X  | Body (SilverCast) with Std. Seal (4001)     |
| 1        | 1           | 0100-4101X  | Body (SilverCast) with Std. Seal (4101)     |
| 2        | 1           | 0200-4001C  | Endplate (Cast Iron) with Std. Seal (4001)  |
| 2        | 1           | 0200-4101C  | Endplate (Cast Iron) with Std. Seal (4101)  |
| 2        | 1           | 0200-4001N  | Endplate (Ni-Resist) with Std. Seal (4001)  |
| 2        | 1           | 0200-4101N  | Endplate (Ni-Resist) with Std. Seal (4101)  |
| 2        | 1           | 0200-4001X  | Endplate (SilverCast) with Std. Seal (4001) |
| 2        | 1           | 0200-4101X  | Endplate (SilverCast) with Std. Seal (4101) |
| 3        | 1           | 0300-4001C  | Rotor (Cast Iron) & Shaft Assembly (4001)   |
| 3        | 1           | 0300-4101C  | Rotor (Cast Iron) & Shaft Assembly (4101)   |
| 3        | 1           | 3430-0765   | Rotor Assembly (Std. 4001 Ni-Resist & XL)   |
| 3        | 1           | 3430-0766   | Rotor Assembly (Std. 4101 Ni-Resist & XL)   |
| 3A       | 1           | 3430-0780   | Rotor Assembly (Std. 4001 Ni-Resist & XL)   |
| 3A       | 1           | 3430-0781   | Rotor Assembly (Std. 4101 Ni-Resist & XL)   |
| 5        | 4           | 1005-0002   | Super Rollers (Std.)                        |
| 5        | 4           | 1002-0002   | Polypropylene Rollers (Optional)            |
| 5        | 4           | 1055-0002   | Teflon Rollers (Optional)                   |
| 6        | 1           | 1720-0104   | O-Ring Gasket for Endplate                  |
| 7        | 4           | 2220-0018   | Endplate Screw                              |
| 8        | 2           | 2107-0002   | Viton Seal (Std.)                           |
| 8        | 2           | 2102-0001   | Buna-N Seal (Optional)                      |
| 8        | 2           | 2102-0001T  | Teflon Coated Buna-N Seal (Optional)        |

| Ref. No. | Qty. Req'd. | Part Number | Description  |
|----------|-------------|-------------|--|
| 9        | 2           | 2000-0010   | Ball Bearing (High temp. grease)   |
| 11A      | 1           |             | Name Plate (Specify pump model #)  |
| 12       | 1           | 3420-0024   | Base Kit — <b>Sold Separately</b><br>Includes: 1 Base, 2 Bolts, and 2 Lock washers for mounting pump to electric motors with 3-1/2" shaft centerline               |
| 13       | 1           | 3420-0025   | Base Kit — <b>Sold Separately</b><br>Includes: 1 Base, 2 Bolts, and 2 Lock washers for mounting pump to electric motors/gas engines with 4-3/16" shaft centerlines |
| 15       | 1 kit       | 1320-0016   | Adapter with 4 set screws for gas engine mount (5/8" x 5/8") — <b>Sold Separately</b>  |
| 15       | 1 kit       | 1320-0015   | Adapter (5/8" x 3/4") — <b>Sold Separately</b>   |
| 16       | 1           | 2300-0023   | Shaft Bearing Cover  |
| 17       | 1           | 2300-0021   | Bearing Cover  |
| 18       | 1           | 1420-0001   | Locking Collar   |
| 19       | 1           | 2230-0001   | Set Screw  |
| 20       | 1           | 1510-0054   | Base — <b>Sold Separately</b>  |
| 21       | 2           | 1450-0003   | Bumper — <b>Sold Separately</b>  |
| 22       | 2           | 2210-0003   | Bolt — <b>Sold Separately</b>  |
| 23       | 2           | 2260-0002   | Lock Washer — <b>Sold Separately</b>   |

**Repair Parts Kit No. 3430-0390** Consists of: (4) Ref. 5 Super Rollers, (1) Ref. 6 O-Ring Gasket, (2) Ref. 8 Viton Seals.

**Repair Parts Kit No. 3430-0158** Consists of: (4) Ref. 5 Polypropylene Rollers, (1) Ref. 6 O-Ring Gasket, (2) Ref. 8 Viton Seals.