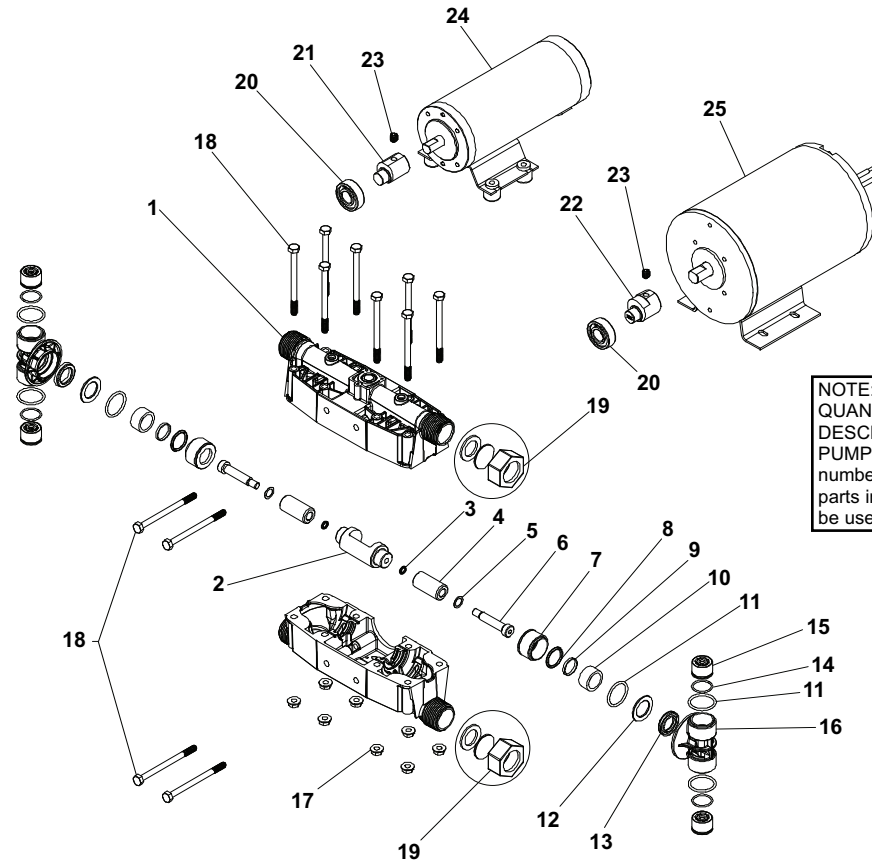


# Parts Illustration

## Models 2130P-D183, 2130P-D355, and 2130P-D359



NOTE: When ordering parts, give QUANTITY, PART NUMBER, DESCRIPTION, and COMPLETE PUMP MODEL NUMBER. Reference numbers are used ONLY to identify parts in the drawing and are NOT to be used as order numbers.

### Plunger Packing Kit No. 3430-0631

Contains: Two Ref. 3 o-rings, two Ref. 5 washers, two Ref. 8 o-rings, two Ref. 9 seal rings, two Ref. 10 plunger guides, six Ref. 11 o-rings, and two Ref. 13 u-cup seals.

### Plunger Kit No. 3430-0819

Contains one each: Ref. 3 o-ring, Ref. 4 plunger, and Ref. 5 washer.

### Valve Kit No. 3430-0632

Contains four each: Ref. 11 o-rings, Ref. 14 o-rings, and Ref. 15 poppet valves.

### Pump Head Kit 2130PX

Contains: Items 1 through 19

### Eccentric Kit (.145") No. 3430-0651

Contains one each:

Ref. 20 Bearing, Ref. 21 Eccentric, and Ref. 23 Set Screw

### Eccentric Kit (.175") No. 3430-0654

Contains one each:

Ref. 20 Bearing, Ref. 22A Eccentric, and Ref. 23 Set Screw

### Eccentric Kit (.235") No. 3430-0820

Contains one each:

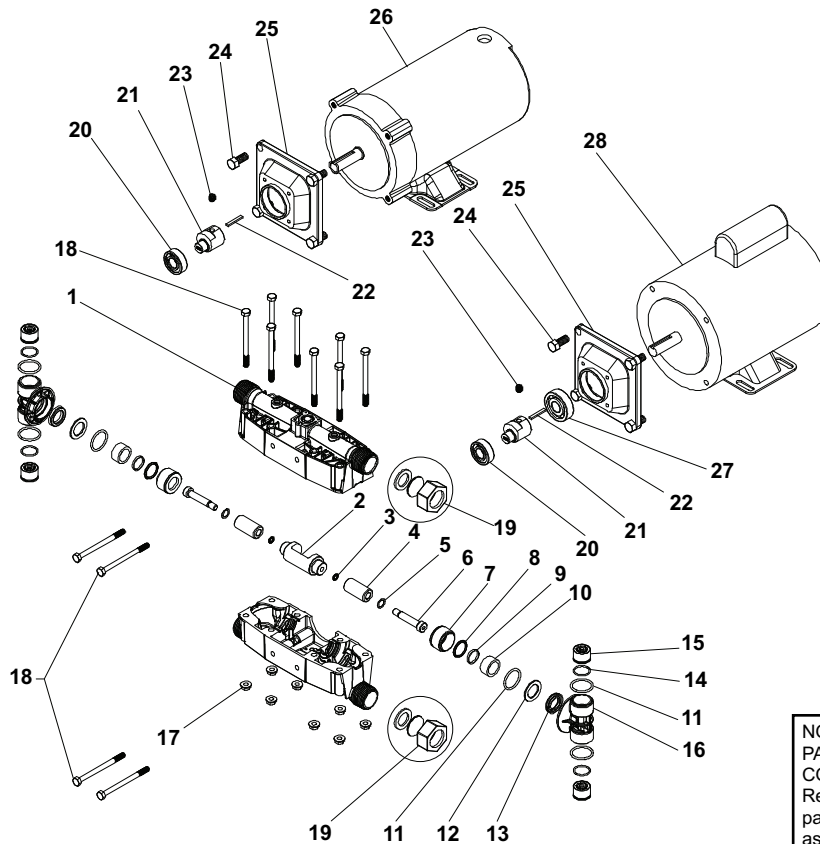
Ref. 20 Bearing, Ref. 22B Eccentric, and Ref. 23 Set Screw

Ref. No.	Qty. Req'd.	Part No.	Description
1	2	0102-2100P	Pump Body (Noryl GTX)
2	1	0500-2130	Connecting Rod
3	2	1720-0033	O-ring
4	2	3500-0070	Plunger
5	2	2270-0015	Washer
6	2	2220-0104	Shoulder Screw
7	2	1830-0171S	Guide Retainer
8	2	1720-0202	O-ring
9	2	1440-0010	Seal Ring
10	2	1440-0086	Plunger Guide
11	6	1721-0227	O-ring
12	2	2270-0095	Washer
13	2	2150-0091	U-Cup Seal

Ref. No.	Qty. Req'd.	Part No.	Description
14	4	1721-0007	O-ring
15	4	3400-0172	Poppet Valve
16	2	0717-2130P	Tee
17	8	2250-0077	Nut
18	12	2210-0137	Bolt
19	2	FNCAP-100N	End Cap Assembly
20	1	2000-0015	Bearing
21	1	0550-2145	Eccentric (.145") 2130P-D183
22A	1	0551-2175	Eccentric (.175") 2130P-D355
22B	1	0551-2235	Eccentric (.235") 2130P-D359
23	1	2230-0003	Set Screw
24	1	2570-0025	Electric Motor: 2130P-D183
25	1	2570-0026	Electric Motor: 2130P-D355, 2130P-D359

# Parts Illustration

## Models 2130P-A055, 2130P-A079, 2130P-D395, and 2130P-D399



NOTE: When ordering parts, give QUANTITY, PART NUMBER, DESCRIPTION, and COMPLETE PUMP MODEL NUMBER. Reference numbers are used ONLY to identify parts in the drawing and are NOT to be used as order numbers.

**Plunger Packing Kit No. 3430-0631**

Contains: Two Ref. 3 o-rings, two Ref. 5 washers, two Ref. 8 o-rings, two Ref. 9 seal rings, two Ref. 10 plunger guides, six Ref. 11 o-rings, and two Ref. 13 u-cup seals.

**Plunger Kit No. 3430-0819**

Contains one each: Ref. 3 o-ring, Ref. 4 plunger, and Ref. 5 washer.

**Valve Kit No. 3430-0632**

Contains four each: Ref. 11 o-rings, Ref. 14 o-rings, and Ref. 15 poppet valves.

**Pump Head Kit 2130PX**

Contains: Items 1 through 19

**Eccentric Kit (.175") No. 3430-0654**

Contains one each:

Ref. 20 Bearing, Ref. 21A Eccentric, Ref. 22 Key, and Ref. 23 Set Screw

**Eccentric Kit (.235") No. 3430-0820**

Contains one each:

Ref. 20 Bearing, Ref. 21B Eccentric, Ref. 22 Key, and Ref. 23 Set Screw

Ref. No.	Qty. Req'd.	Part No.	Description
1	2	0102-2100P	Pump Body (Noryl GTX)
2	1	0500-2130	Connecting Rod
3	2	1720-0033	O-ring
4	2	3500-0070	Plunger
5	2	2270-0015	Washer
6	2	2220-0104	Shoulder Screw
7	2	1830-0171S	Guide Retainer
8	2	1720-0202	O-ring
9	2	1440-0010	Seal Ring
10	2	1440-0086	Plunger Guide
11	6	1721-0227	O-ring
12	2	2270-0095	Washer
13	2	2150-0091	U-Cup Seal
14	4	1721-0007	O-ring
15	4	3400-0172	Poppet Valve

Ref. No.	Qty. Req'd.	Part No.	Description
16	2	0717-2130P	Tee
17	8	2250-0077	Nut
18	12	2210-0137	Bolt
19	2	FNCAP-100N	End Cap Assembly
20	1	2000-0015	Bearing
21A	1	0551-2175	Eccentric (.175") for 2130P-D395, 2130P-A055
21B	1	0551-2235	Eccentric (.235") for 2130P-D399, 2130P-A079
22	1	1610-0061	Key
23	1	2230-0003	Set Screw
24	4	2210-0020	Bolt
25	1	0706-2100A	Flange Adapter
26	1	2570-0027	Electric Motor (DC): 2130P-D395, 2130P-D399
27	1	2000-0021	Ball Bearing: 2130P-A055, 2130P-A079
28	1	24878-SHU	Electric Motor (AC) 1/2 HP: 2130P-A055
	1	24876-SHU	Electric Motor (AC) 3/4 HP: 2130P-A079