

# COMPOSITE PRESSURE VESSELS



## DESIGNED FOR COMMERCIAL SOFTENING AND FILTRATION APPLICATIONS



Tested and Certified by the  
Water Quality Association



against NSF Std. 61 for Material Safety Section 8  
and NSF std. 372 for Low Lead Compliance.

\*Tested under domestic cold:  $23 \pm 2$  °C ( $73 \pm 4$  °F).

Pentair Structural<sup>®</sup> Composite Pressure Vessels offer reinforced fiberglass construction for outstanding performance and durability. Available in capacities up to 1,600 gallons, composite vessels are available with a variety of different configurations. ASME code available.

### FEATURES • BENEFITS

- ◆ For commercial and industrial water treatment and storage
- ◆ 100% composite fiberglass construction
- ◆ Outstanding performance and durability in harsh chemical environments
- ◆ Absolutely will not – and cannot – rust
- ◆ Capacities up to 1,600 gallons
- ◆ Factory-backed five-year warranty
- ◆ Commercial softening and filtration

### MATERIAL OF CONSTRUCTION

- ◆ Polyethylene inner shell

### INSTALLATION TIPS

- ◆ Bolt base to floor
- ◆ Calculate height for valve and base combined

### OPERATING PARAMETERS

- ◆ Maximum operating pressure – 150 psi
- ◆ Maximum operating temperature – 120°F (threaded); 150°F (flanged)

### PENTAIR DESIGN PARAMETERS

- ◆ Safety factor – 4:1
- ◆ Minimum burst at 600 psi
- ◆ Tested to 250,000 cycles without leakage

### COLOR OPTIONS

- ◆ AL – Almond
- ◆ BL – Blue
- ◆ BK – Black
- ◆ GR – Gray
- ◆ NA – Natural

- ◆ ASME Section X Code Vessels Available

## SPECIFICATIONS

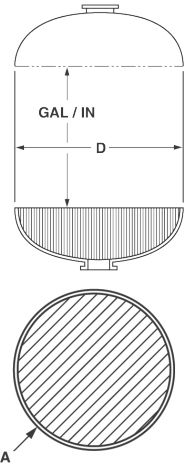
| VESSEL                     | DESCRIPTION                    | HEIGHT W/BASE<br>INCHES / MM | HEIGHT W/O BASE<br>INCHES / MM | CAPACITY<br>GALLONS / LITERS | CUBIC<br>FEET | BASE      | SHIP WEIGHT<br>LBS. |
|----------------------------|--------------------------------|------------------------------|--------------------------------|------------------------------|---------------|-----------|---------------------|
| 18" DIA.                   | 18X65 COMP 4"T                 | 67 / 1702                    | 65.7 / 1669                    | 64 / 242                     | 8.56          | SMC       | 67                  |
|                            | 18X65 COMP 4"T 4"B             | 73.13 / 1858                 | 65.6 / 1666                    | 64 / 242                     | 8.56          | SMC EXT   | 74                  |
|                            | 18X65 COMP 6"TF 6"BF           | 84.12 / 2137                 | 70.5 / 1791                    | 62 / 235                     | 8.29          | TRIPOD    | 92                  |
| 21" DIA.                   | 21X36 COMP 4"T                 | 41.7 / 1059                  | 38.2 / 970                     | 46 / 174                     | 6.15          | SMC       | 49                  |
|                            | 21X36 COMP 4"T 4"B             | 47.5 / 1207                  | 38.2 / 970                     | 45 / 170                     | 6.02          | SMC EXT   | 53                  |
|                            | 21X62 COMP 4"T                 | 67 / 1702                    | 63.4 / 1610                    | 84 / 318                     | 11.23         | SMC       | 95                  |
|                            | 21X62 COMP 4"T 4"B             | 72.8 / 1849                  | 63.5 / 1613                    | 84 / 318                     | 11.23         | SMC EXT   | 102                 |
| 24" DIA.                   | 24X38 COMP 4"T                 | 42.6 / 1082                  | 38.5 / 978                     | 61 / 231                     | 8.15          | SMC       | 65                  |
|                            | 24X50 COMP 4"T                 | 55.6 / 1412                  | 51.5 / 1308                    | 84 / 318                     | 11.23         | SMC       | 90                  |
|                            | 24X50 COMP 4"T 4"B             | 63 / 1600                    | 52.9 / 1344                    | 84 / 318                     | 11.23         | SMC EXT   | 97                  |
|                            | 24X65 COMP 4"T                 | 65.2 / 1656                  | 61.1 / 1552                    | 100 / 379                    | 13.37         | SMC       | 109                 |
|                            | 24X65 COMP 4"T 4"B             | 70.1 / 1781                  | 60 / 1524                      | 100 / 379                    | 13.37         | SMC EXT   | 115                 |
|                            | 24X65 COMP 6"TF                | 65 / 1651                    | 61.2 / 1554                    | 100 / 379                    | 13.37         | SMC       | 114                 |
|                            | 24X65 COMP 6"TF 6"BF           | 79 / 2007                    | 65 / 1651                      | 100 / 379                    | 13.37         | TRIPOD    | 124                 |
|                            | 24X72 COMP 4"T                 | 74.19 / 1884                 | 70.12 / 1781                   | 118 / 447                    | 15.77         | SMC       | 109                 |
|                            | 24X72 COMP 4"T 4"B             | 80.4 / 2042                  | 70.3 / 1786                    | 119 / 450                    | 15.91         | SMC EXT   | 124                 |
|                            | 24X72 COMP 6"TF                | 77 / 1956                    | 73.4 / 1864                    | 119 / 450                    | 15.91         | SMC       | 137                 |
| 24X72 COMP 6"TF 6"BF       | 88.5 / 2248                    | 74.5 / 1892                  | 119 / 450                      | 15.91                        | TRIPOD        | 147       |                     |
| 30" DIA.                   | 30X60 COMP 6"TF                | 71.6 / 1819                  | 64.3 / 1633                    | 151 / 572                    | 20.19         | SMC EXT   | 195                 |
|                            | 30X60 COMP 6"TF 6"BF           | 82.5 / 2096                  | 68.5 / 1740                    | 151 / 572                    | 20.19         | TRIPOD    | 205                 |
|                            | 30X72 COMP 4"T                 | 78.9 / 2004                  | 69.8 / 1773                    | 187 / 708                    | 25.00         | SMC EXT   | 198                 |
|                            | 30X72 COMP 4"T 4"B             | 77.2 / 1961                  | 69.8 / 1773                    | 187 / 708                    | 25.00         | SMC EXT   | 205                 |
|                            | 30X72 COMP 6"TF                | 79.73 / 2025                 | 70 / 1778                      | 187 / 708                    | 25.00         | SMC EXT   | 195                 |
|                            | 30X72 COMP 6"TF 6"BF           | 88.24 / 2241                 | 74.67 / 1897                   | 187 / 708                    | 25.00         | TRIPOD    | 211                 |
| 36" DIA.                   | 36X36 COMP 6"TF 6"BF           | 55.3 / 1405                  | 41 / 1041                      | 118 / 447                    | 15.77         | TRIPOD    | 148                 |
|                            | 36X57 COMP 6"TF                | 68 / 1727                    | 59.3 / 1506                    | 205 / 776                    | 27.40         | SMC EXT   | 195                 |
|                            | 36X57 COMP 6"TF 6"BF           | 77.3 / 1963                  | 63 / 1600                      | 205 / 776                    | 27.40         | TRIPOD    | 225                 |
|                            | 36X72 COMP 4"T                 | 80.4 / 2042                  | 71.8 / 1824                    | 264 / 999                    | 35.29         | SMC EXT   | 264                 |
|                            | 36X72 COMP 4"T 4"B             | 80.4 / 2042                  | 70.5 / 1791                    | 264 / 999                    | 35.29         | SMC EXT   | 285                 |
|                            | 36X72 COMP 6"TF                | 82.29 / 2090                 | 73.54 / 1868                   | 264 / 999                    | 35.29         | SMC EXT   | 295                 |
|                            | 36X72 COMP 6"TF 6"BF           | 90.1 / 2289                  | 76.2 / 1935                    | 264 / 999                    | 35.29         | TRIPOD    | 305                 |
|                            | 36X72 COMP 6"TF 6"BF 4"TBFS    | 89.6 / 2276                  | 75.3 / 1913                    | 264 / 999                    | 35.29         | TRIPOD    | 315                 |
| 42" DIA.                   | 42X72 COMP 6"TF                | 72.5 / 1842                  | 71.1 / 1806                    | 345 / 1306                   | 46.12         | SMC SHORT | 370                 |
|                            | 42X72 COMP 6"TF 6"BF           | 90.1 / 2289                  | 73 / 1854                      | 345 / 1306                   | 46.12         | TRIPOD    | 400                 |
|                            | 42X72 COMP 6"TF 6"BF 4"TBFS    | 94.6 / 2403                  | 77.5 / 1969                    | 345 / 1306                   | 46.12         | TRIPOD    | 415                 |
| 48" DIA.                   | 48X72 COMP 6"TF                | 81.5 / 2070                  | 75.2 / 1910                    | 463 / 1753                   | 61.89         | SMC SHORT | 494                 |
|                            | 48X72 COMP 6"TF 6"BF           | 91.91 / 2335                 | 76 / 1930                      | 463 / 1753                   | 61.89         | TRIPOD    | 500                 |
|                            | 48X72 COMP 6"TF 6"BF 4"TBFS    | 96.75 / 2457                 | 80.75 / 2051                   | 463 / 1753                   | 61.89         | TRIPOD    | 504                 |
| 63" DIA.                   | 63X67 COMP 6"TF 6"BF           | 81.5 / 2070                  | 67.1 / 1704                    | 600 / 2271                   | 80.21         | TRIPOD    | 680                 |
|                            | 63X86 COMP 6"TF 6"BF           | 98.88 / 2512                 | 84.5 / 2146                    | 900 / 3407                   | 120.31        | TRIPOD    | 950                 |
|                            | 63X86 COMP 16"TMWY 6"BF        | 99 / 2515                    | 84.5 / 2146                    | 900 / 3407                   | 120.31        | TRIPOD    | 950                 |
|                            | 63X86 COMP 16"TMWY 6"BF 4"TBFS | 99 / 2515                    | 85 / 2159                      | 900 / 3407                   | 120.31        | TRIPOD    | 960                 |
|                            | 63X116 16"TMWY 6"BF 4"TBFS     | 130 / 3302                   | 116 / 2946                     | 1250 / 4732                  | 167.10        | TRIPOD    | 1190                |
| 63X144 16"TMWY 6"BF 4"TBFS | 158 / 4013                     | 144 / 3658                   | 1600 / 6057                    | 213.89                       | TRIPOD        | 1398      |                     |

\*Measurements are subject to change without notice and are for reference only.

NOTE: Flexible connections must be installed between hard piping and tank openings. Failure to install flex connection properly with the vessel will void the warranty.

NOTE: Different base options can be selected on different tank diameters. The bases selected above illustrate most common base selection.

## DOMES VOLUME (GALLONS) AND STRAIGHT WALL GALLON PER INCH

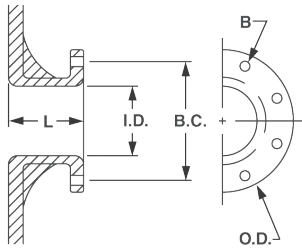


| NOMINAL DIAMETER |                     |                        |              |
|------------------|---------------------|------------------------|--------------|
| D (INCHES)       | GALLONS* (ONE DOME) | GALLON/ INCH (APPROX.) | A (SQ. FEET) |
| 12               | 1.0                 | 0.5                    | 0.7          |
| 13               | 1.4                 | 0.5                    | 0.9          |
| 14               | 1.7                 | 0.6                    | 1.1          |
| 16               | 2.7                 | 0.8                    | 1.3          |
| 18               | 3.7                 | 1.0                    | 1.8          |
| 21               | 6.2                 | 1.4                    | 2.4          |
| 24               | 9.3                 | 1.9                    | 3.0          |
| 30               | 18                  | 2.9                    | 4.6          |
| 36               | 33                  | 4.2                    | 6.7          |
| 42               | 52                  | 5.7                    | 9.0          |
| 48               | 74                  | 7.5                    | 12.0         |
| 63               | 168                 | 13.0                   | 20.0         |

\*Cubic Ft. = 0.1337 x Gallons

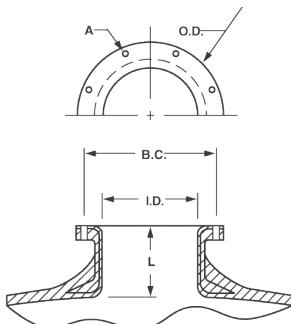
## SIDE FLANGE

| DIMENSIONS |      |      |      |      |             |                 |               |
|------------|------|------|------|------|-------------|-----------------|---------------|
| SIZE       | L    | I.D. | B.C. | O.D. | A BOLT DIA. | NUMBER OF HOLES | WEIGHT (LBS.) |
| 4" ANSI    | 4.1" | 4.0" | 7.5" | 9.0" | 0.63"       | 8               | 6.4           |

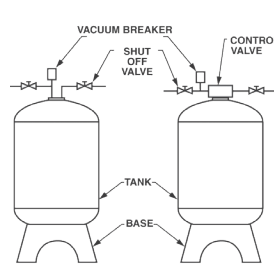


## TOP AND BOTTOM OPENING FLANGES/MANWAY

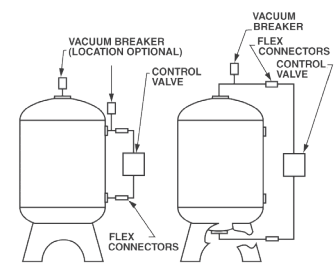
| DIMENSIONS     |      |       |       |       |             |                 |               |
|----------------|------|-------|-------|-------|-------------|-----------------|---------------|
| SIZE           | L    | I.D.  | B.C.  | O.D.  | A BOLT DIA. | NUMBER OF HOLES | WEIGHT (LBS.) |
| 6" SNA         | 3.6" | 5.9"  | 8.5"  | 9.4"  | 0.31"       | 12              | 5.8           |
| 10" ANSI       | 3.7" | 10.0" | 14.3" | 16.0" | 0.88"       | 12              | 17.8          |
| 16" Manway SNA | 4.3" | 16.0" | 20.4" | 21.3" | 0.50"       | 24              | 34.0          |



## VACUUM BREAKER INSTALLATION



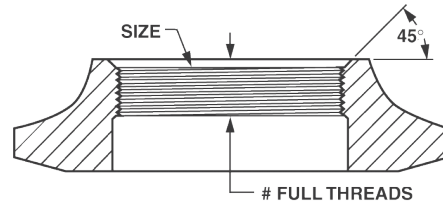
## FLEX CONNECTORS INSTALLATION



NOTE: Flexible connectors must be installed between hard piping and tank openings. These pressure vessels are treated for an internal negative pressure of 5y HG (17 Pa) vacuum below atmospheric. If negative pressure could ever exceed 5y HG (17 Pa), an adequate vacuum breaker must also be properly installed. Failure to install flex connection properly, or improper installation of a vacuum breaker when required, may void the warranty.

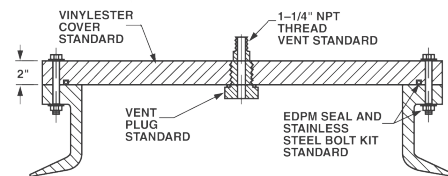
## TOP AND BOTTOM OPENING THREADS

| SPECIFICATIONS     |                      |                        |           |
|--------------------|----------------------|------------------------|-----------|
| SIZE               | COMPOSITE/POLY GLASS | NUMBER OF FULL THREADS | COMPOSITE |
| 2.5" - 8" NPSM     | 6                    | 3 min                  | 6         |
| 4" - 8" UN         | 7                    | 3 min                  | 7         |
| 4.5" - 8" Buttress | 7                    | 3 min                  | 7         |



## MANWAY COVER

| SPECIFICATIONS |                 |               |
|----------------|-----------------|---------------|
| MATERIAL       | PRESSURE RATING | TAPPING       |
| CPVC           | 100 psi         | As requested  |
| VE             | 150 psi         | As shown only |



## ADDER DIMENSIONS



| DIMENSIONS  |                       |                           |
|-------------|-----------------------|---------------------------|
| FLECK VALVE | TANK DIA. (INCHES/MM) | ADDER HT. (X) (INCHES/MM) |
| 2750        | 18/475                | 6.5/165                   |
| 2850        | 21/533                | 6.5/165                   |
| 2900        | 24, 30/610, 762       | 12/305                    |
| 3150        | 42/1067               | 10/254                    |
| 3900        | 48-63/1219-1600       | 15/381                    |

\*Measurements are subject to change without notice and are for reference only.



**13845 Bishops Dr. | Suite 200 | Brookfield, WI 53005 | United States**  
**P: 262.238.4400 | Customer Care: 800.279.9404 | [tech-support@pentair.com](mailto:tech-support@pentair.com)**

§For a detailed list of where Pentair trademarks are registered, please visit [waterpurification.pentair.com/brands](http://waterpurification.pentair.com/brands).  
Pentair trademarks and logos are owned by Pentair plc or its affiliates. Third party registered and unregistered trademarks and logos are the property of their respective owners.

© 2018 Pentair Residential Filtration, LLC. All rights reserved.  
40846 Rev H AU18