



# DATA CENTER PUMP SOLUTIONS

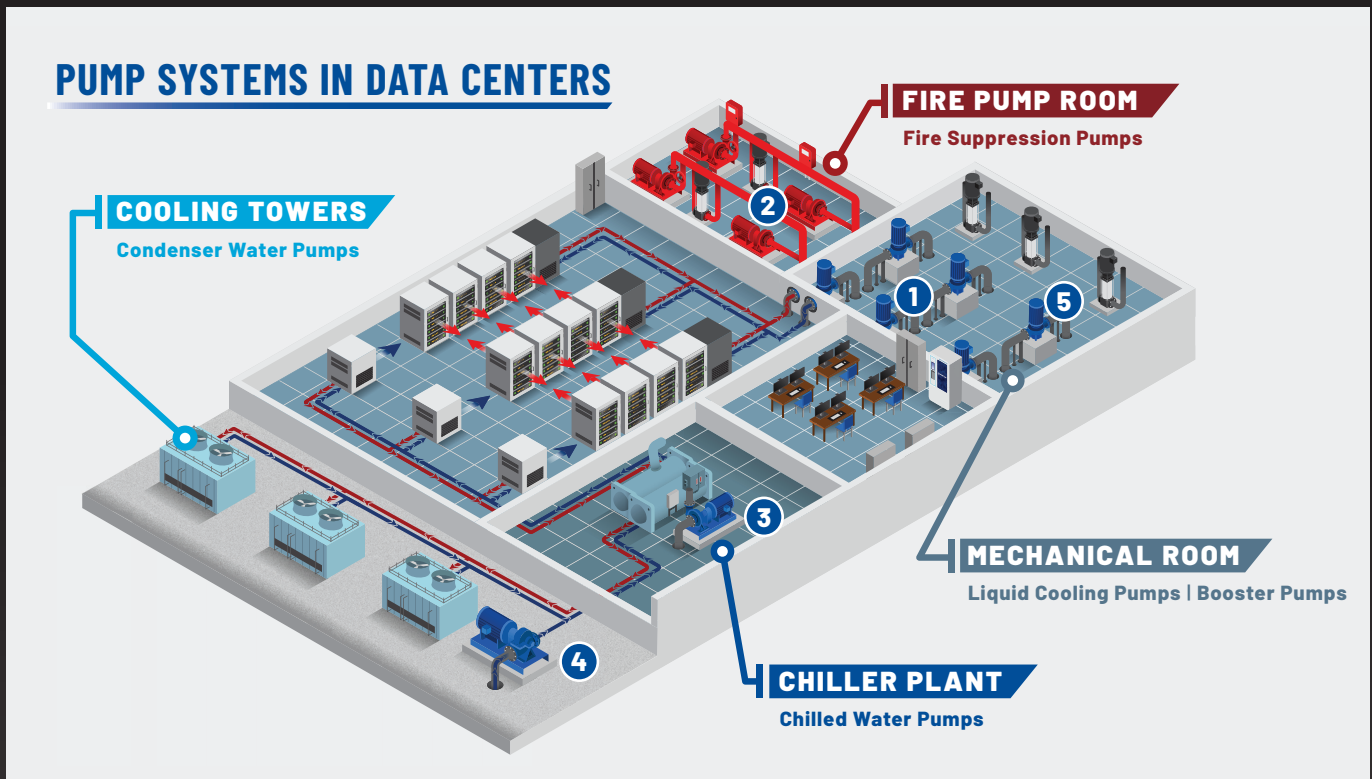
Cooling and Fire Protection Pumps

[pentair.com/datacenters](http://pentair.com/datacenters)

# RELIABLE PUMPING SOLUTIONS FOR MISSION-CRITICAL DATA CENTERS

Pentair Aurora® pumps help keep modern data centers running cool, stable, and efficient, supporting everything from traditional air cooling to advanced liquid cooling architectures with dependable, facility-wide performance.

Engineered for demanding, always-on environments, Aurora solutions deliver the resilience and versatility needed to safeguard personnel, preserve capital investments, and ensure reliable operation of critical digital infrastructure.



This graphic and the descriptions below provide a representative overview of typical pump configurations; multiple other models and layouts are available depending on system design.

## 1 Liquid Cooling Loop Vertical In-Line Pumps

Delivers water or glycol/water mixture to CDU's (coolant distribution units), which enable immersion or direct-to-chip cooling.

## 2 Fire Protection System Horizontal / Vertical Split Case or Vertical In-Line Pumps\*

Dedicated to supplying high-pressure water for vital fire suppression sprinklers and hydrants.

*\* Electric and diesel variants available*

## 3 Chilled Water Loop End Suction Pump

Circulates chilled water from the chiller plant to the CRAH (computer room air handling) units in the data hall, providing cool air for the server equipment.

## 4 Condenser Water Loop Horizontal Split Case Pump\*

Transfers heat from the chiller plant to the cooling towers, where heat is released to the atmosphere.

*\* Vertical configuration also available*

## 5 Domestic Water & Pressure Boosting Vertical Multistage Pumps

Maintains pressure for the building's domestic water system, ensuring reliable water supply for restrooms, kitchens, and other non-cooling needs.



## COOLING PUMPS

### END SUCTION

3800 Series

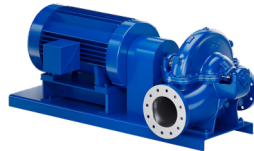
- Rugged, close- and flex-coupled designs
- Ideal for chilled water and general cooling loops in pump rooms or chiller plants



### SPLIT CASE

400 Series

- Versatile, high-capacity solution for large cooling circuits
- Designed for serviceability without disturbing piping



Horizontal and vertical configurations available

### SINGLE STAGE VERTICAL IN-LINE

382B Model

- Compact design for dense or rapidly scaling data center mechanical rooms
- Meets DOE 2020 pump efficiency standards to help lower energy consumption in high-load cooling environments



### VERTICAL MULTISTAGE

PVM Model

- Powerful solution for pressure boosting, CDU supply, or auxiliary cooling loops
- Stainless steel impellers / diffusers for corrosion resistance



NSF® Certifications available.

Quick Ship Program available for select models.



## FIRE PROTECTION PUMPS

### END SUCTION

384 Model

- Frame-mounted design
- Bronze-fitted construction for long service life
- Back pull-out design for simplified maintenance



Electric and diesel variants available

### HORIZONTAL SPLIT CASE

471, 481, 485, 491, 492 Models

- High-capacity fire protection for large data halls and campus-scale sites
- Double-suction impeller for balanced operation



Electric and diesel variants available

### SINGLE STAGE VERTICAL IN-LINE

383 Model

- Space-efficient solution for tight mechanical rooms
- Vertical design simplifies piping layouts
- Bronze-fitted construction enhances durability



### VERTICAL SPLIT CASE

483 Model

- Compact fire protection solution where floor space is limited
- Elevated motor design for enhanced protection from flooding



All fire pump models are UL® Listed, FM® Approved, NFPA 20 Design.

Quick Ship Program available for Horizontal Split Case and Vertical In-Lines to help mitigate downtime in firewatch situations.

# AURORA PUMPS: COOLING DEPENDABILITY FOR RAPID SCALING

Data centers are expanding at a record pace as AI and hyperscale workloads drive accelerated new construction and higher cooling demand. Aurora pumps deliver the reliable, high-efficiency performance needed to support this growth, from chilled water and condenser water loops to emerging liquid-cooling architectures. With manufacturing in the U.S. and a resilient supply chain designed for speed and availability, Aurora is positioned to meet the fast-moving demands of today's scaling data center landscape.

As facilities densify, operators are adopting liquid cooling while continuing to optimize air-assisted strategies like refrigerant and enhanced chilled water systems. Aurora's engineered solutions provide stable flow, long-life durability, and service-friendly designs that help maintain uptime across every loop, keeping critical digital infrastructure cool, protected, and ready to scale.

# YOUR PUMP PARTNER FOR THE WHOLE BUILDING

PROTECTING LEGACIES LIKE YOURS  
FOR MORE THAN A CENTURY

Our extensive pump portfolio, crafted with a tradition of quality and excellence, has countless applications in commercial buildings.

Whether it's **mission-critical applications like data centers**, fire suppression for safety, or HVAC and boosting applications for comfort, your building is covered with dynamic water movement solutions that fit your needs.

No matter where it's used, you can trust that your pump is backed by a dedicated team providing unwavering support throughout its lifetime. Because every decision counts when selecting pump equipment that protects your building and the people inside.

Scan the QR code or visit [pentair.com/aurora](https://pentair.com/aurora) to learn more.



EXPLORE OUR  
PUMP PORTFOLIO

FIRE SUPPRESSION • HVAC • PRESSURE BOOSTING



800 Airport Road | North Aurora, Illinois, USA, 60542 | Ph: 630.859.7000 | [pentair.com/aurora](https://pentair.com/aurora)

NSF is a registered trademark of NSF International.

UL is a registered trademark of UL LLC.

All FM Approvals certification marks are the the sole property of FM Approvals LLC.

All indicated Pentair trademarks and logos are property of Pentair. Third party registered and unregistered trademarks and logos are the property of their respective owners.