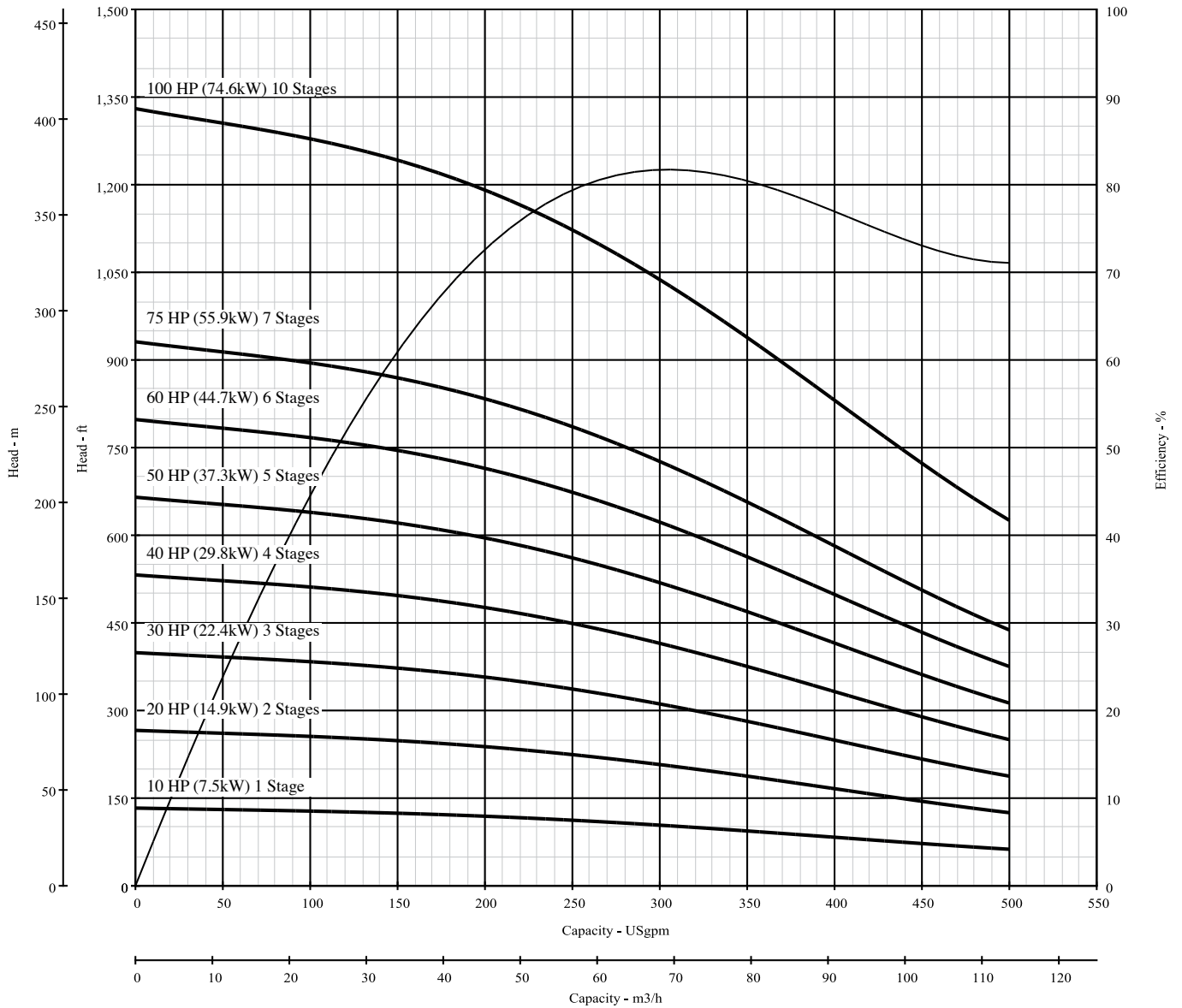


BERKELEY® 7TMH-350

SUBMERSIBLE TURBINES

Curve 7TMH-350
 Date 03/01/16
 Page 1.0
 Supersedes New

Nominal RPM: 3500 (60 hz)
 Based on Fresh Water@ 68° F (20° C)
 Maximum Working Pressure: 735 PSI (50.6 BAR)
 Standard Catalog Staging
 Pump Diameter with Cableguard: 7.50" (191 mm)

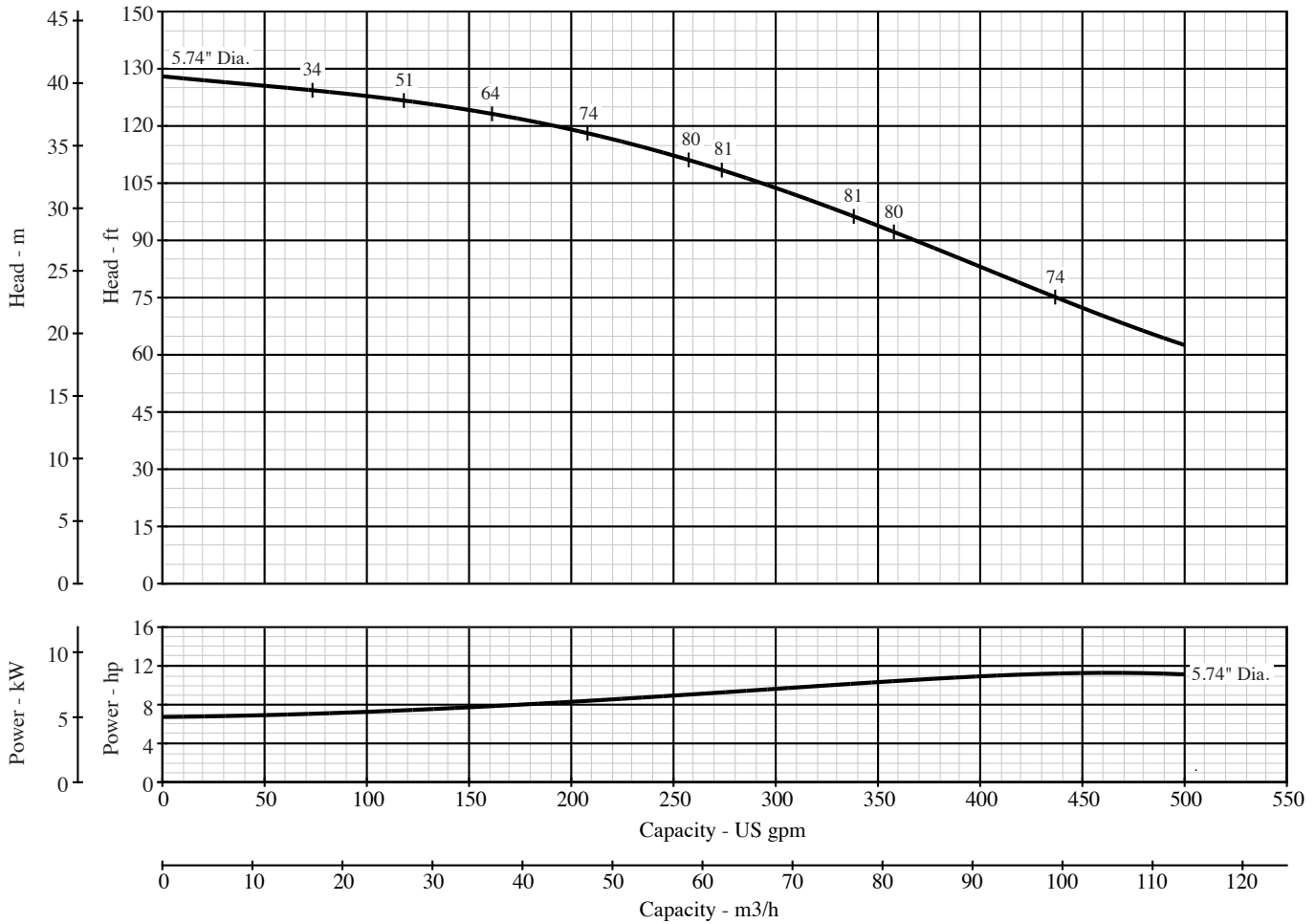


BERKELEY® 7TMH-350

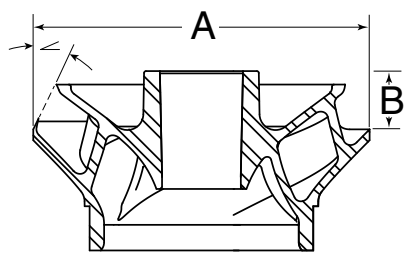
SUBMERSIBLE TURBINES

Curve 7TMH-350
 Date 03/01/16
 Page 1.0
 Supersedes New

Nominal RPM: 3500 (60 hz)
 Based on Fresh Water@ 68° F (20° C)
 Maximum Working Pressure: 735 PSI (50.6 BAR)



Part Name	Material	Reference
Top Bearing	Vesconite®	
Discharge Adapter	Ductile Iron	ASTM A536-84 65-45-12
Bowls	Cast Iron	ASTM A48 Class 30
Suction Bracket	Ductile Iron	ASTM A536-84 65-45-12
Bowl Bearing	Rubber	Neoprene
Impeller Collets	Steel	AISI 1226
Pump Shaft, Shaft Coupling	Stainless Steel	AISI 416 UNS S41600
Upthrust Adjustment, Impeller, Suction Screen	Stainless Steel	AISI 302 UNS S30400
Cable Guard	Stainless Steel	AISI 302 UNS S30200



Stages	Assembled pump length less motor – inches (mm)
1	20.75 (527.1)
Each additional stage	Add 8.00 (203.2)
Pump Diameter with leadguard: 7.50 inches (191 mm)	
Refer to the following literature pieces for motor information, including power and length: P10842BK for Pentek® motors, P8174WS for Hitachi® motors	

Trim	"A" Diameter inches (mm)	"B" Height inches (mm)	∠
"A"	5.736 (145.69)	1.273 (32.33)	24°



293 WRIGHT STREET, DELAVAN, WI 53115 www.BerkeleyPumps.com
 PH: 888-237-5353 ORDERS FAX: 800-321-8793

Because we are continuously improving our products and services, Pentair reserves the right to change specifications without prior notice.