

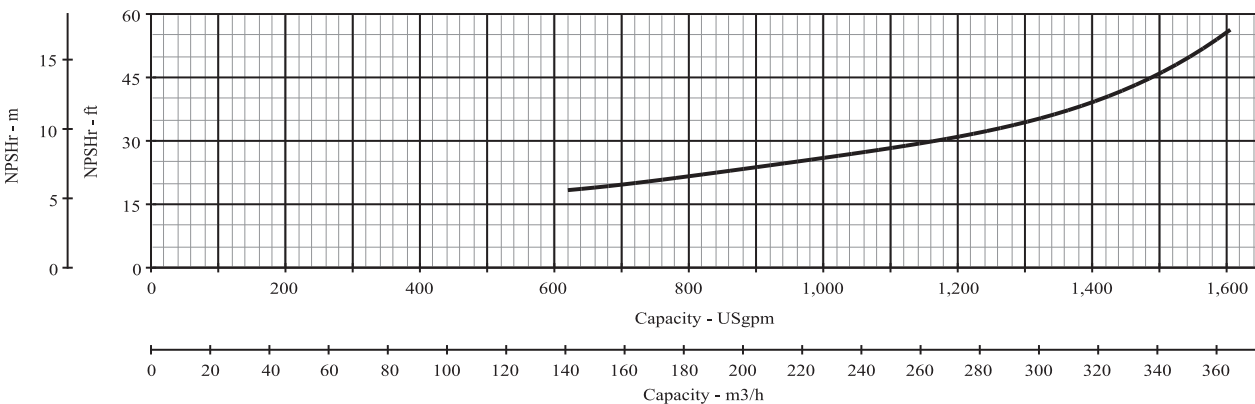
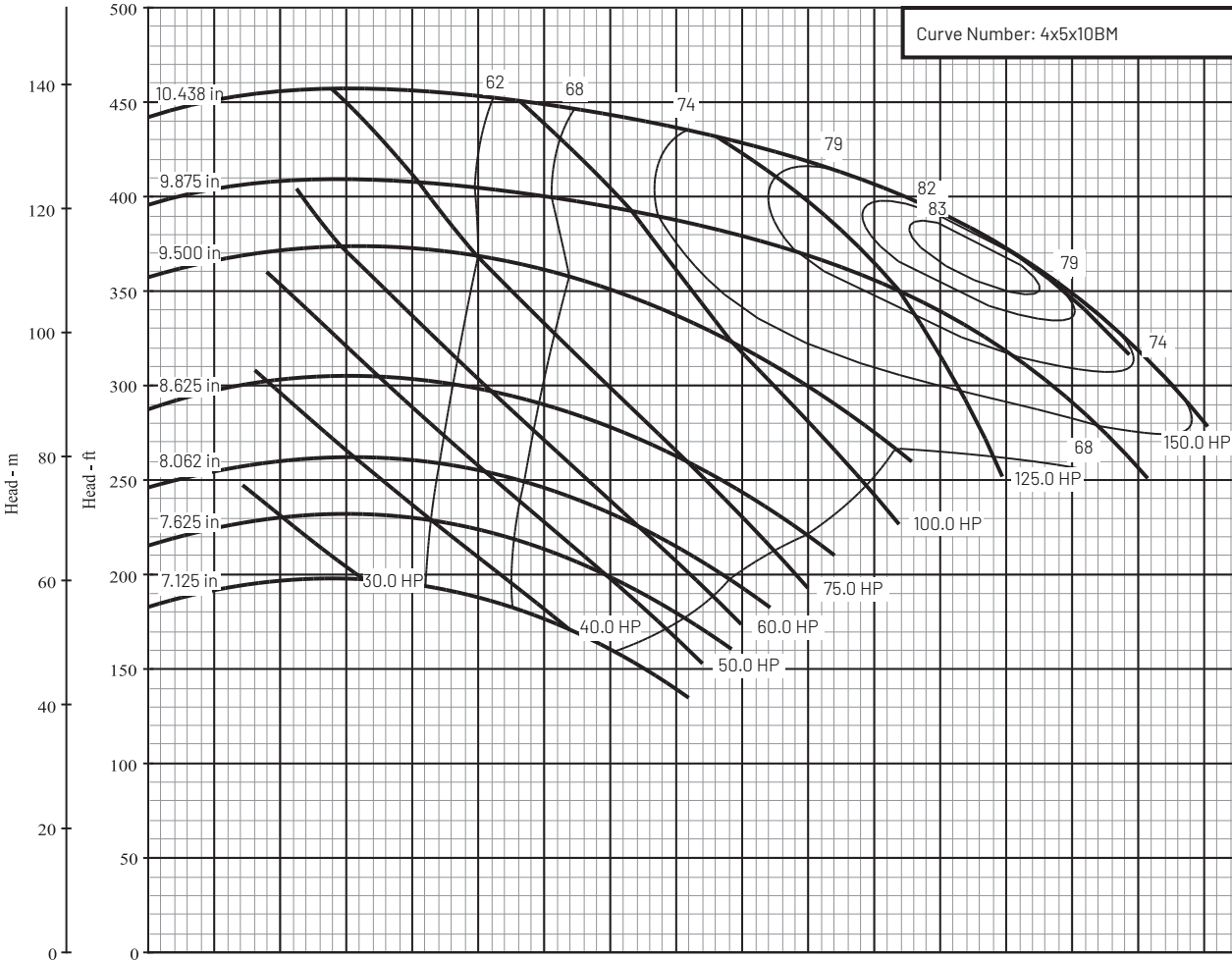
Series Name: B4E\_BM

Pump Size: 4 x 5 x 10 BM

Department of Energy Requirements	
PE <sub>lcl</sub>	0.96
Model	B4EBM
Imp. Dia. (in.)	10.44

Available Configurations	
CCMD	B4EPBM
Frame	B4ERBM
SAE	

Curve Conditions	
Nominal RPM	3550
Maximum Working Pressure	266 psi (18 bar)
Based on Fresh Water @ F	68 (20 C)



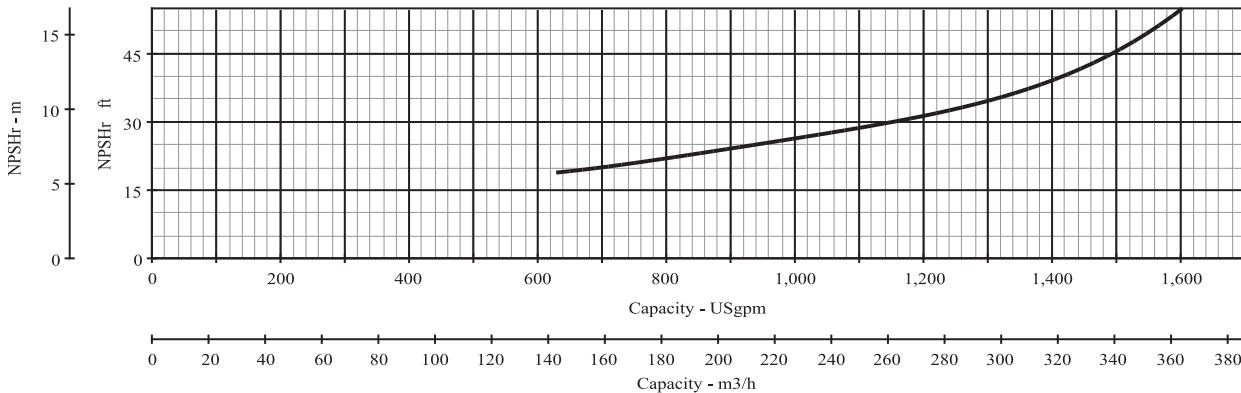
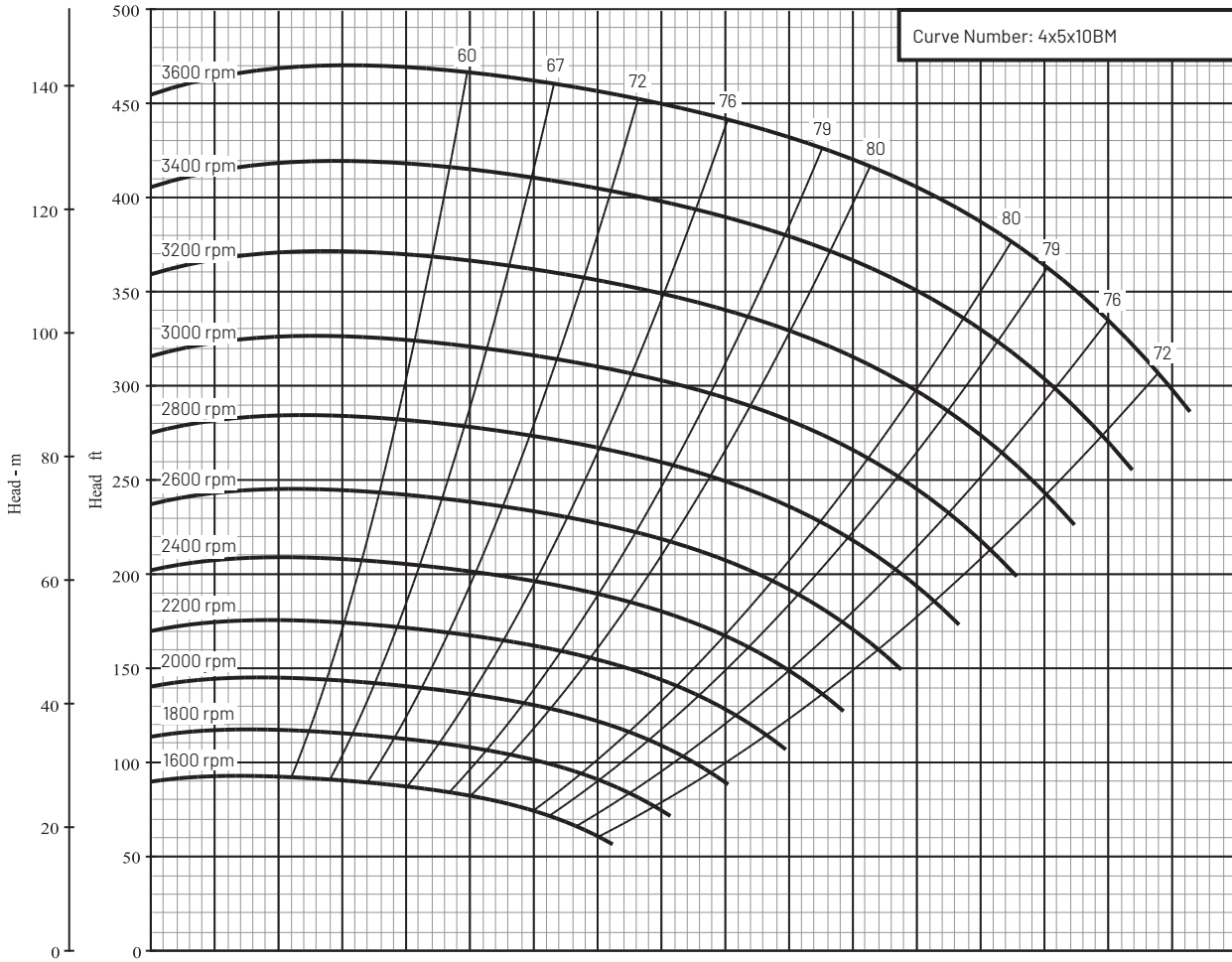
Series Name: B4E\_BM

Pump Size: 4 x 5 x 10 BM

Department of Energy Requirements	
PEI <sub>CL</sub>	0.96
Model	B4EBM
Imp. Dia. (in.)	10.44

Available Configurations	
CCMD	B4EPBM
Frame	B4ERBM
SAE	

Curve Conditions	
Nominal RPM	VARIOUS
Maximum Working Pressure	266 psi (18 bar)
Based on Fresh Water @ F	68 (20 C)



This product as sold in U.S. is regulated by 10 CFR Parts 429 and 431.

293 Wright Street, Delavan, WI 53115 | Pentair.com

All Pentair trademarks and logos are owned by Pentair. All other brands or product names are trademarks or registered marks of their respective owners. Because we are continuously improving our products and services, Pentair reserves the right to change specifications without prior notice. Pentair is an equal opportunity employer.

B4MLBMD0E (12/04/20) © 2020 Pentair plc. All Rights Reserved.