

# SOLIDS HANDLING PUMPS

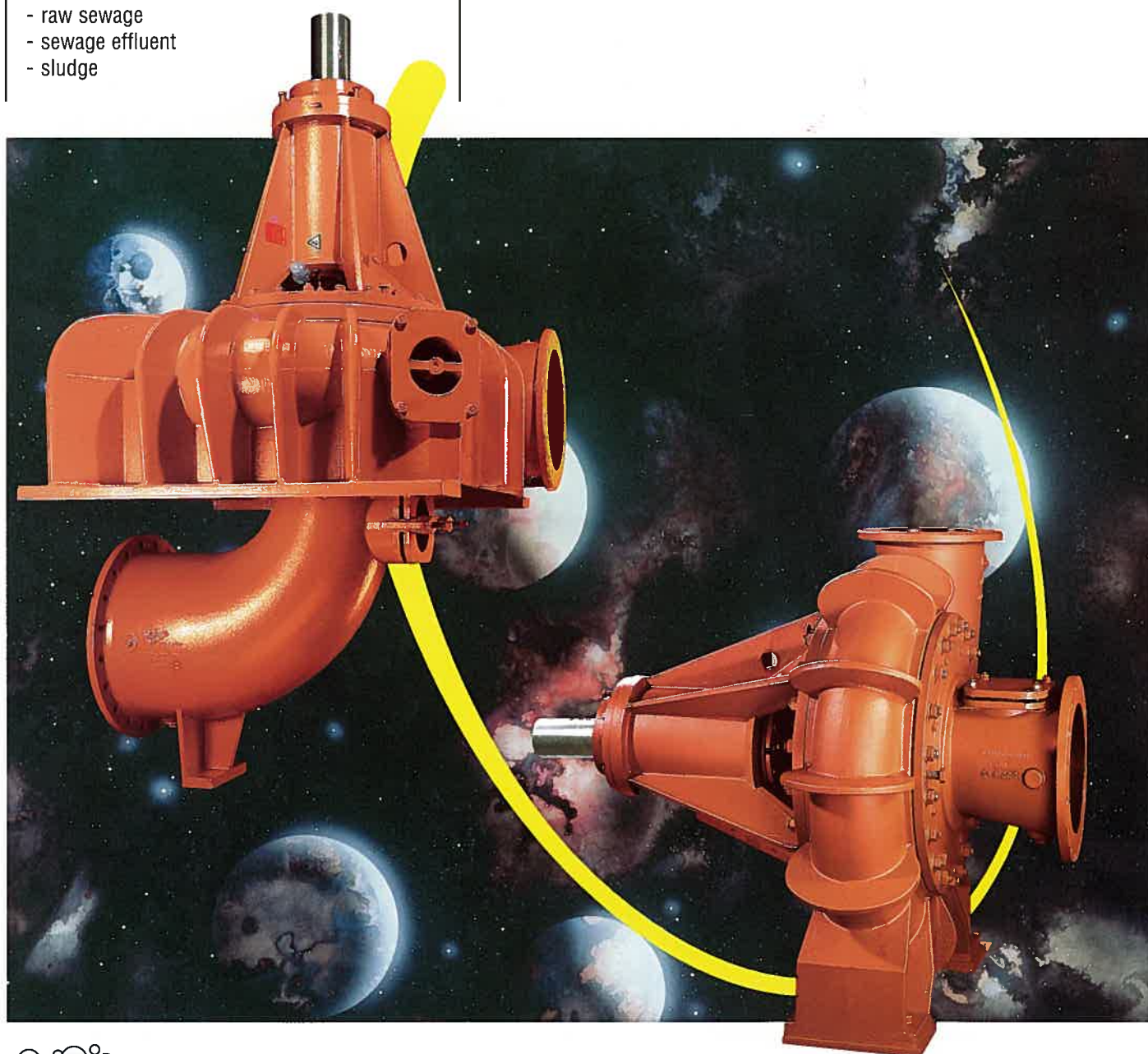


**NIJHUIS**  
POMPEN

## *Applications*

- wastewater
- raw sewage
- sewage effluent
- sludge

# mercury



A world of pumping experience



**Mercury**

The Nijhuis Pompen sewage pumps have an international reputation for their solid handling capacity combined with high efficiencies.

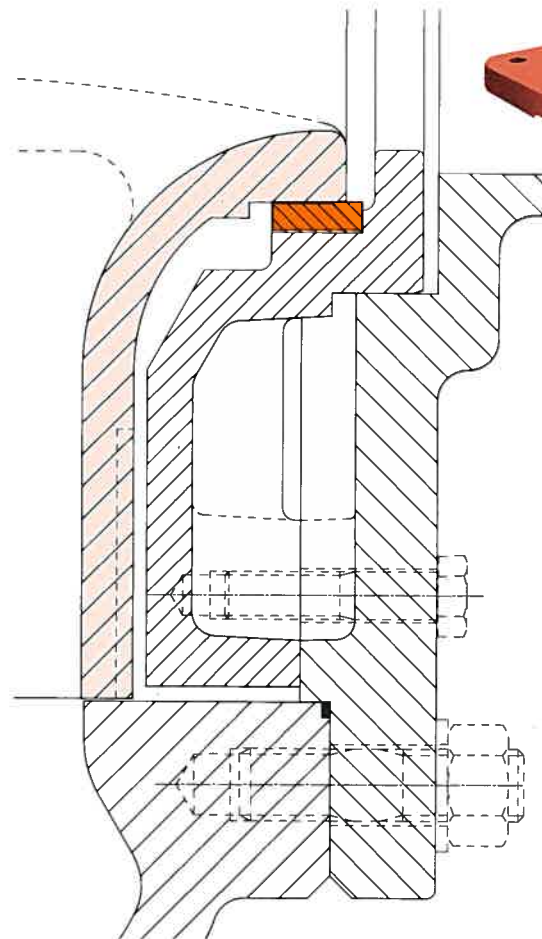
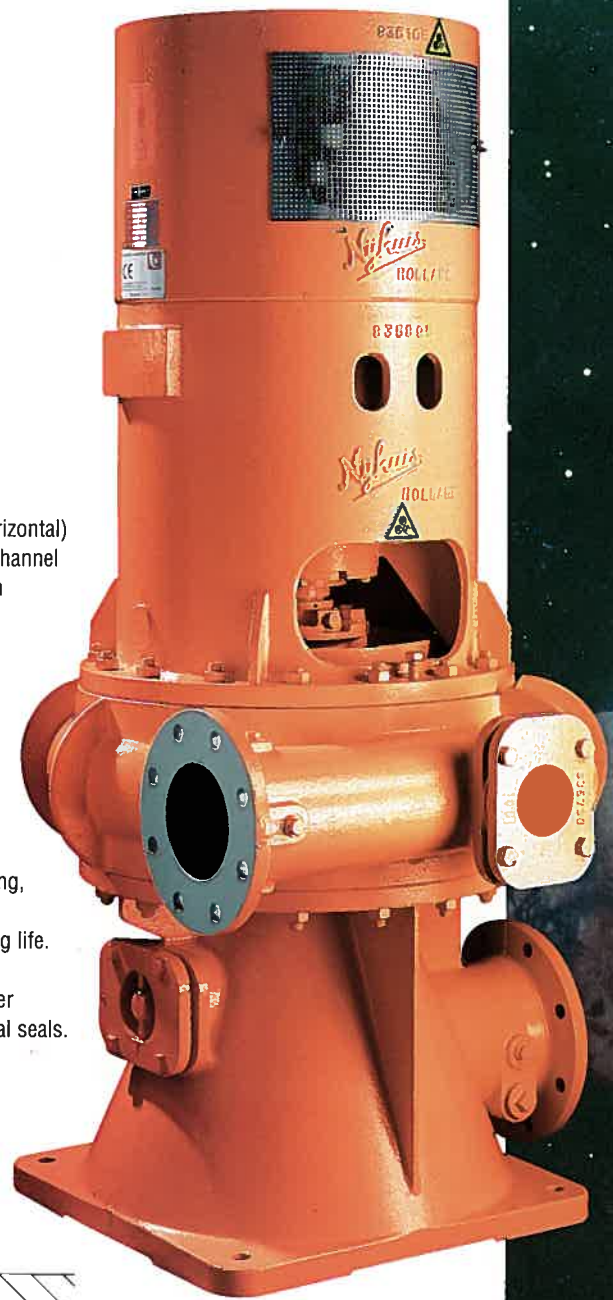
### Hydraulic design

Nijhuis Pompen sewage pumps series (E)RW (horizontal) and (E)RWV (vertical) are available with a single channel impeller as well as a double channel impeller, both types have wide impeller passages of at least 120 mm, which provide an extremely smooth resistance-free path for solids.

### Mechanical design

By using oversized shafts and by reducing overhang, shaft deflection is reduced to a minimum. This eliminates shaft failures and increases packing life.

The stuffing boxes are designed for grease or water lubricated soft packing or single/double mechanical seals.

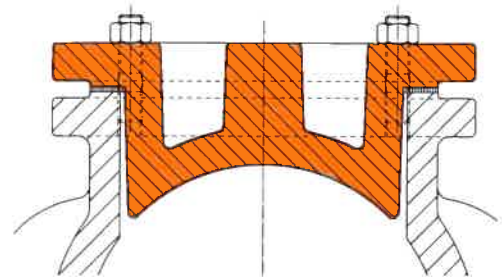
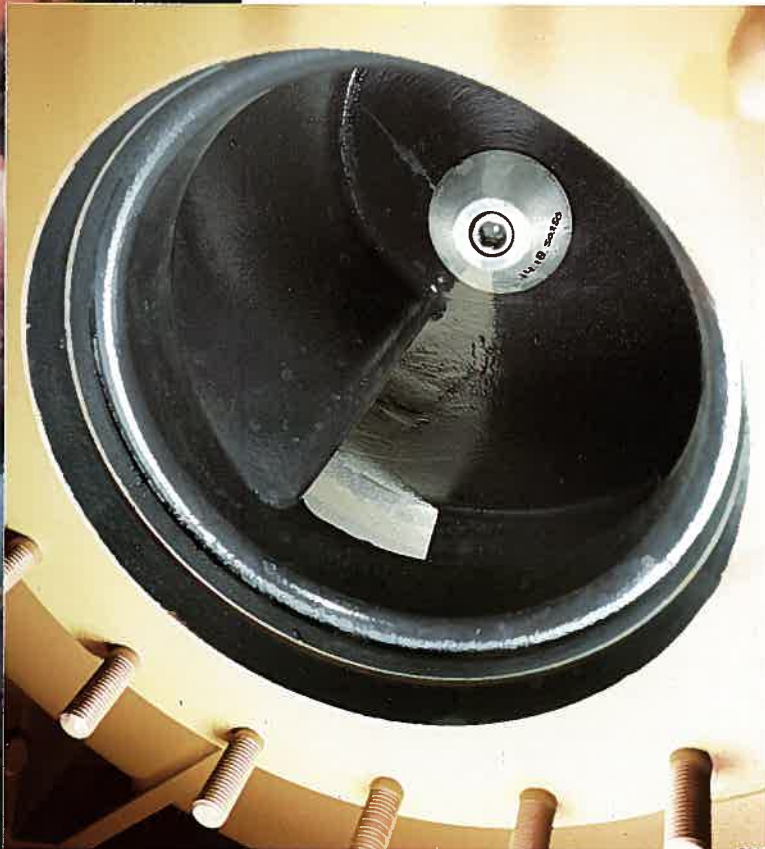
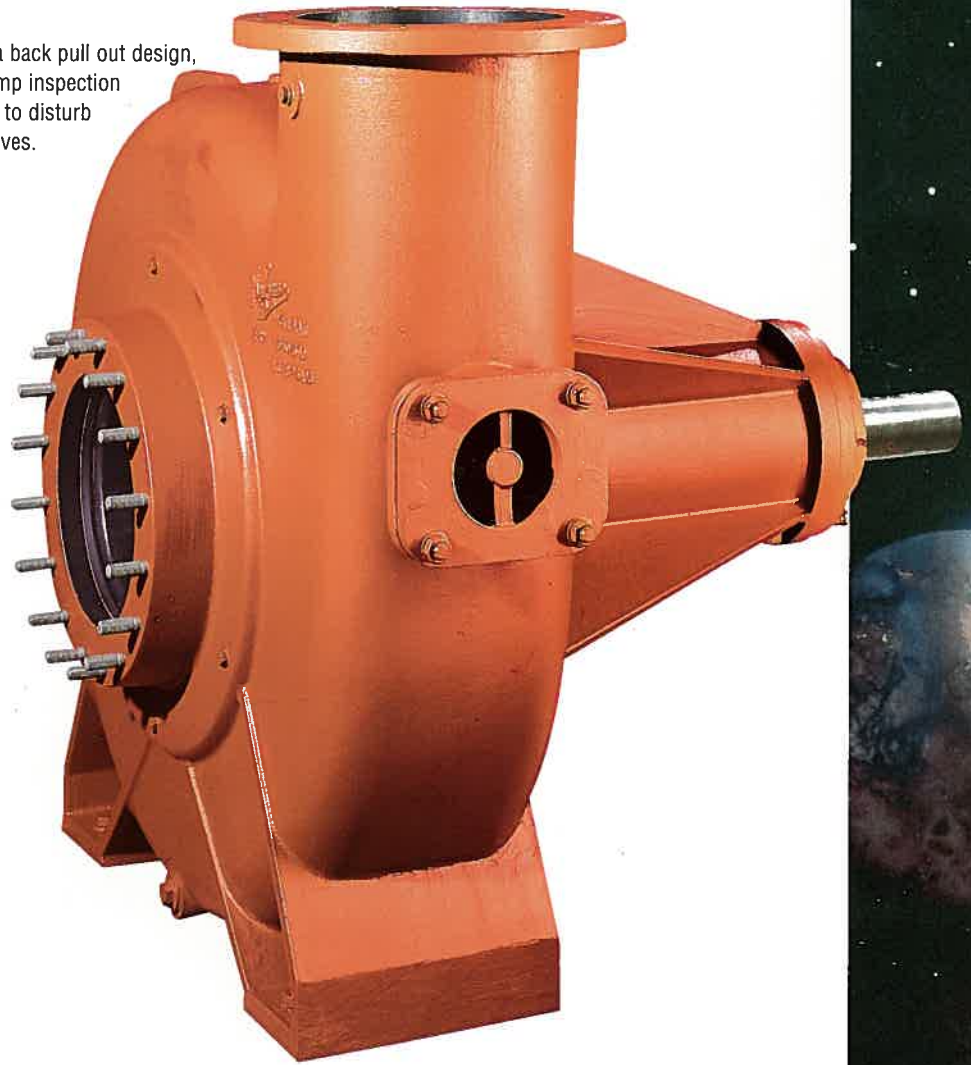


The clearance between impeller and wear plate is kept to a minimum in order to avoid accumulation of solids.



**Mercury**

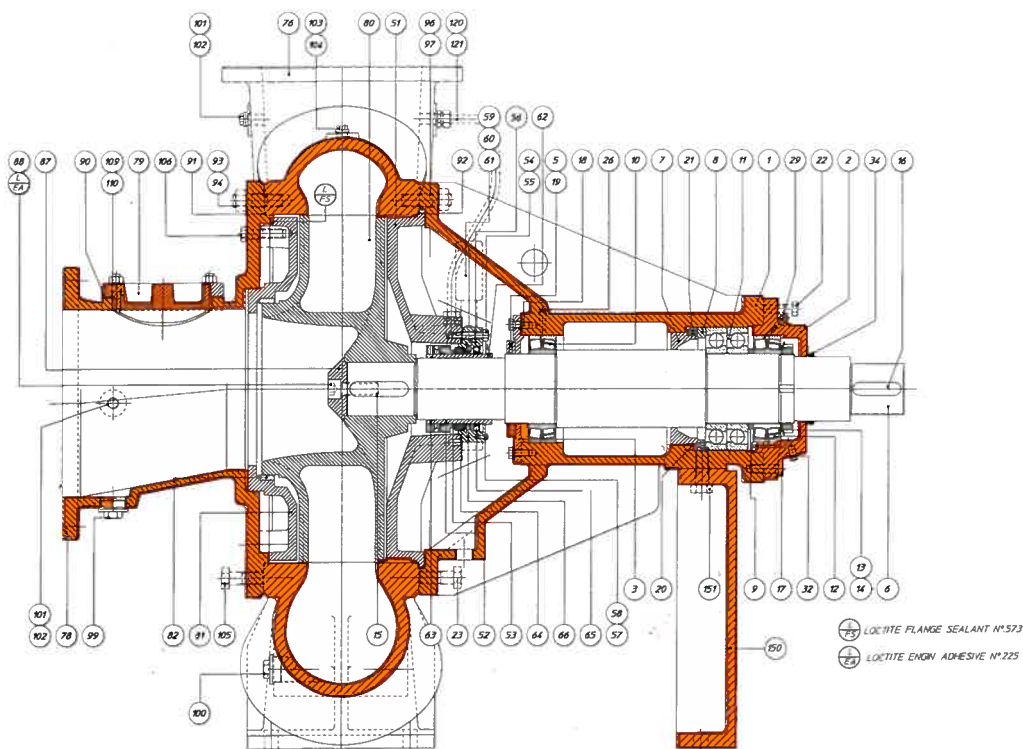
All pumps have a back pull out design, which allows pump inspection without the need to disturb pipework and valves.



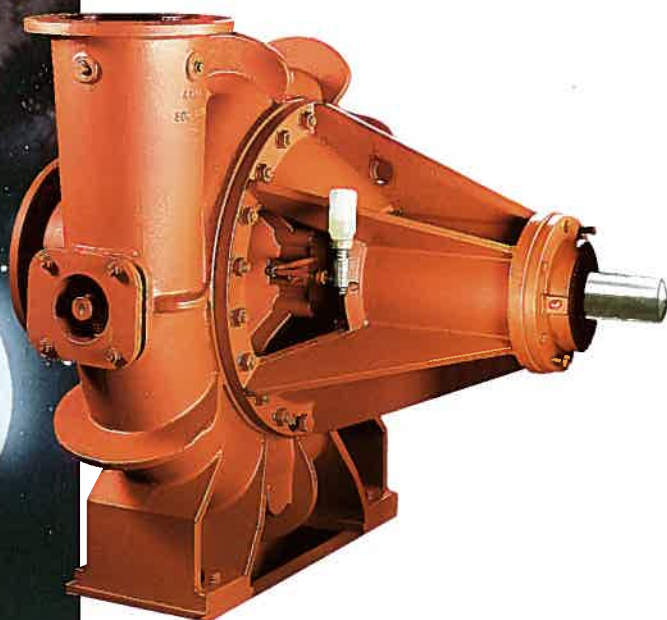
The pump casing is designed with an access hole that permits internal inspection of the impeller.



Mercury



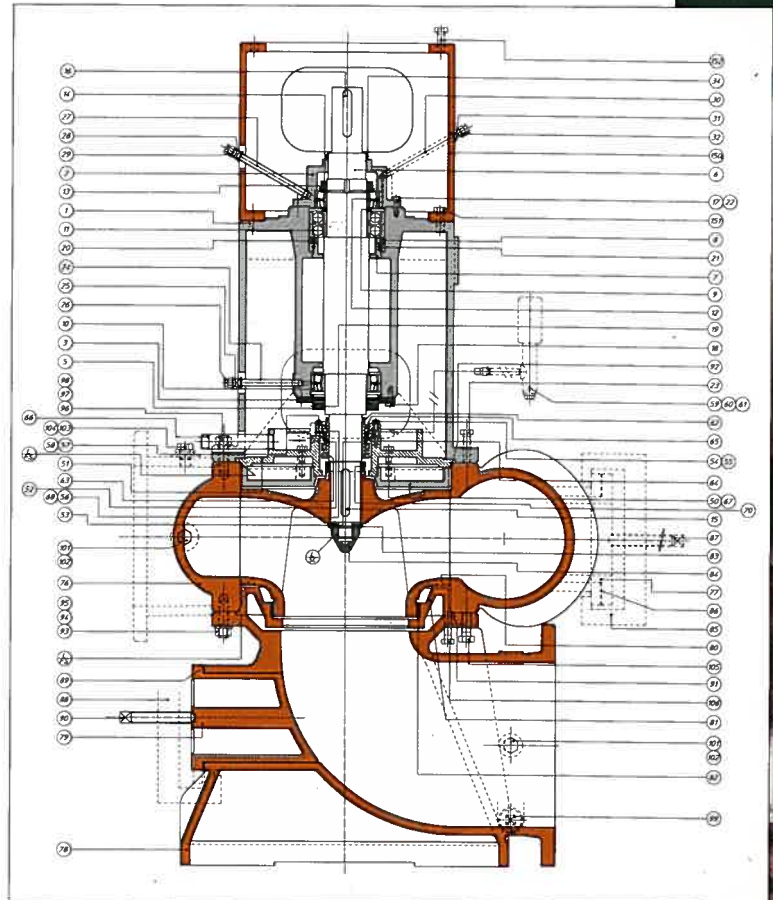
- |                                    |                                |                                    |
|------------------------------------|--------------------------------|------------------------------------|
| 1 Bearing bracket                  | 21 Compression spring          | 63 O-ring                          |
| 2 Bearing cover k.z.               | 22 Hexagon head bolt/screw     | 64 O-ring                          |
| 3 Bearing cover p.z.               | 23 Hexagon head bolt/screw     | 65 Radial shaft seal               |
| 5 Thrower                          | 26 Grease nipple               | 66 Bar steel                       |
| 6 Pump shaft                       | 29 Grease nipple               | 76 Pump casing                     |
| 7 Spring housing                   | 32 Grease nipple               | 77 Inspection cover                |
| 8 Ring for spring housing          | 34 V-ring                      | 78 Suction cover                   |
| 9 Distance ring                    |                                | 79 Inspection cover                |
| 10 Barrel bearing                  | 51 Carrier for mechanical seal | 80 Impeller                        |
| 11 Angular-contact ball bearing    | 52 Shaft sleeve                | 81 Wear plate                      |
| 12 Barrel bearing                  | 53 Seal                        | 82 Wear ring                       |
| 13 Lock washer                     | 54 Stud                        | 87 Impeller hub cap                |
| 14 Bearing nut                     | 55 Hexagon nut                 | 88 Hexagonal socket head cap screw |
| 15 Taper key                       | 56 Carrier for mechanical seal | 89 Gland packing                   |
| 16 Taper key                       | 57 Hexagon head bolt/screw     | 90 Gland packing                   |
| 17 Hexagon head bolt/screw         | 58 Mounting strip              | 91 O-ring                          |
| 18 Hexagon head bolt/screw         | 59 Constant level oiler        | 92 O-ring                          |
| 19 Hexagonal socket set screw      | 60 Elbow                       | 93 Stud                            |
| 20 Hexagonal socket head cap screw | 61 Nipple                      | 94 Hexagon nut                     |
|                                    | 62 Hexagon socket set screw    | 96 Stud                            |
|                                    |                                | 97 Hexagon nut                     |
|                                    |                                | 99 Plug square head                |
|                                    |                                | 100 Plug square head               |
|                                    |                                | 101 Hexagon head screw plug        |
|                                    |                                | 102 Lock washer                    |
|                                    |                                | 103 Hexagon head screw plug        |
|                                    |                                | 104 Lock washer                    |
|                                    |                                | 105 Hexagon head bolt/screw        |
|                                    |                                | 106 Hexagon head bolt/screw        |
|                                    |                                | 107 Stud                           |
|                                    |                                | 108 Hexagon nut                    |
|                                    |                                | 109 Stud                           |
|                                    |                                | 110 Hexagon nut                    |
|                                    |                                | 120 Screwed coupling               |
|                                    |                                | 121 Pipe                           |
|                                    |                                | 150 Base                           |
|                                    |                                | 151 Hexagon head bolt/screw        |





Mercury

- |                                  |                            |                             |
|----------------------------------|----------------------------|-----------------------------|
| 1 Bearing bracket                | 83 Lockwasher for impeller | 97 Hexagon nut              |
| 2 Bearing cover                  | 84 Impeller nut            | 98 Plainwasher              |
| 3 Bearing cover                  | 85 Toggle                  | 99 Plug square head         |
| 5 Thrower                        | 86 Gland packing           | 101 Hexagon head screw plug |
| 6 Pumpshaft                      | 87 Gland stud              | 102 Lockwasher              |
| 7 Springhousing                  | 88 Toggle                  | 103 Hexagon head screw plug |
| 8 Ring for springhousing         | 89 Gland packing           | 104 Lockwasher              |
| 9 Ring                           | 90 Gland stud              | 105 Hexagon head bolt/screw |
| 10 Barrel bearing                | 91 O-ring                  | 106 Hexagon head bolt/screw |
| 11 Angular contact ball bearing  | 92 O-ring                  |                             |
| 12 Barrel bearing                | 93 Stud                    | 150 Adapter motor           |
| 13 Lockwasher                    | 94 Hexagon nut             | 151 Hexagon head bolt/screw |
| 14 Bearing nut                   | 95 Plainwasher             | 152 Hexagon head bolt/screw |
| 15 Taper key                     | 96 Stud                    |                             |
| 16 Taper key                     |                            |                             |
| 17 Hexagon head bolt/screw       |                            |                             |
| 18 Hexagon head bolt/screw       |                            |                             |
| 19 Hexagon socket set screw      |                            |                             |
| 20 Hexagon socket head cap screw |                            |                             |
| 21 Compression spring            |                            |                             |
| 22 Hexagon head bolt/screw       |                            |                             |
| 23 Hexagon head bolt/screw       |                            |                             |
| 24 Nipple                        |                            |                             |
| 25 Reducing socket               |                            |                             |
| 26 Grease nipple                 |                            |                             |
| 27 Nipple                        |                            |                             |
| 28 Reducing socket               |                            |                             |
| 29 Grease nipple                 |                            |                             |
| 30 Nipple                        |                            |                             |
| 31 Reducing socket               |                            |                             |
| 32 Grease nipple                 |                            |                             |
| 34 V-ring                        |                            |                             |
| 50 Wear plate                    |                            |                             |
| 51 Housing for mechanical seal   |                            |                             |
| 52 Shaft sleeve                  |                            |                             |
| 53 Seal                          |                            |                             |
| 54 Stud                          |                            |                             |
| 55 Hexagon nut                   |                            |                             |
| 56 Carrier for mechanical seal   |                            |                             |
| 57 Hexagon head bolt/screw       |                            |                             |
| 58 Mounting strip                |                            |                             |
| 59 Constant level oiler          |                            |                             |
| 60 Reducing socket               |                            |                             |
| 61 Nipple                        |                            |                             |
| 62 Hexagon socket set screw      |                            |                             |
| 63 O-ring                        |                            |                             |
| 64 O-ring                        |                            |                             |
| 65 Radial shaft seal             |                            |                             |
| 66 Nipple                        |                            |                             |
| 67 Hexagon head bolt/screw       |                            |                             |
| 68 Bar steel                     |                            |                             |
| 70 Distance                      |                            |                             |
| 76 Pumpcasing                    |                            |                             |
| 77 Inspection cover              |                            |                             |
| 78 Suction bend                  |                            |                             |
| 79 Inspection cover              |                            |                             |
| 80 Impeller                      |                            |                             |
| 81 Wear plate                    |                            |                             |
| 82 Wear ring                     |                            |                             |



### Standard materials

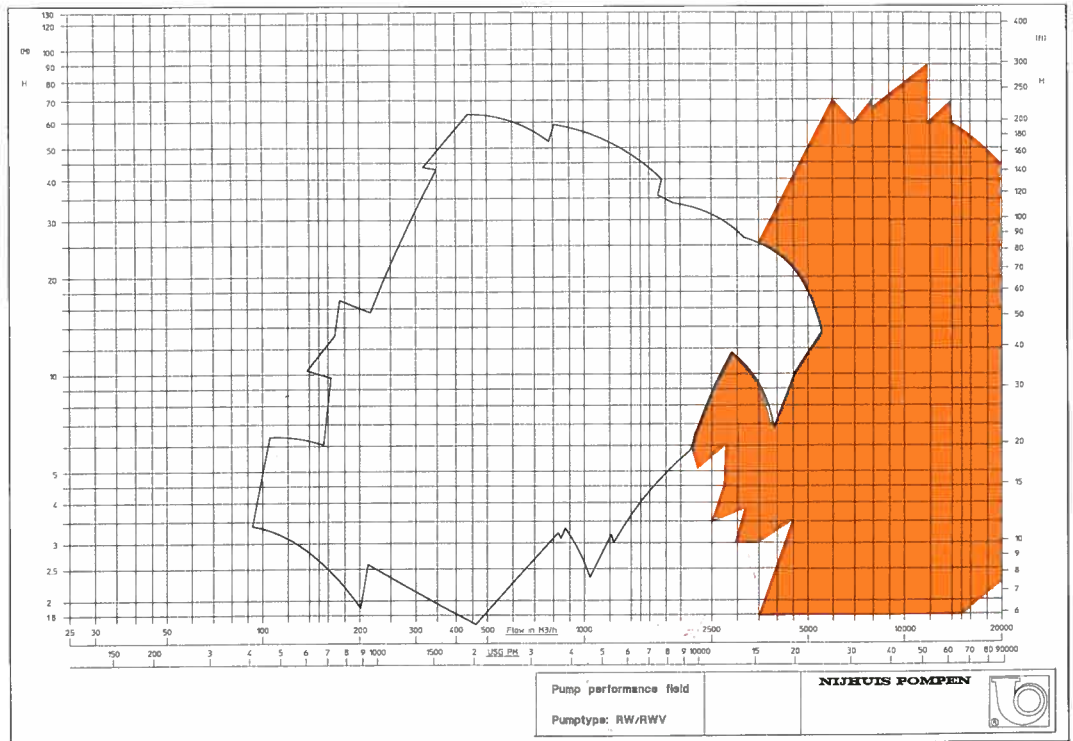
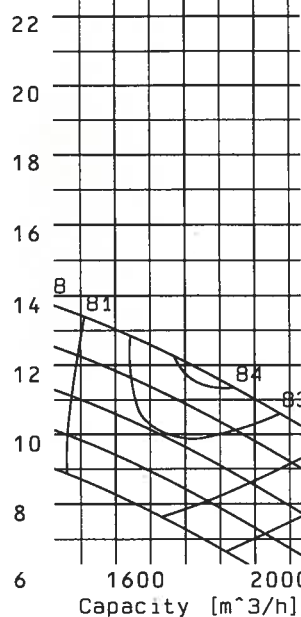
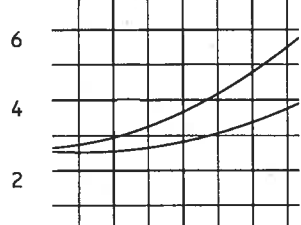
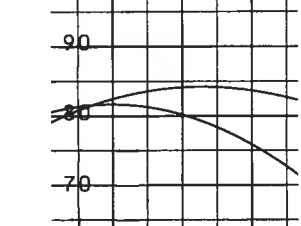
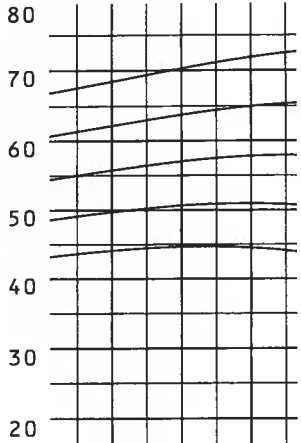
Nijhuis sewage pumps are available in the materials:

- cast iron
- ductile cast iron
- ni resist 2b and D2b
- bronze and aluminiumbronze
- stainless steel

**Pump**

type : RWV1-500.735  
no. :

sg. = 1000 [kg/m<sup>3</sup>]



**Worldwide Sales and Service Organizations**

Nijhuis Pompen has a network of agents and service centres throughout the entire world manned by experts in pump technology. These experts are abreast of current developments in the field, have access to up-to-date documentation and can provide customers with the information and technical advice they may require. Direct links with head office in Winterswijk, the Netherlands, are maintained via modern communication techniques.

Financially attractive service and maintenance contracts guarantee that defects in pumping installations are kept to a minimum. Nijhuis Pompen offers you peace of mind through sustained reliable operation and problem free production. In other words, when you choose Nijhuis Pompen you choose over 60 years of experience in building pumps to customer specification as well as the certainty of a smooth running operation.

**Quality Products**

Customers who ordered pumps from Nijhuis Pompen at the beginning of the century are still regular customers, giving an indication of how much they appreciate good and lasting relations. The Nijhuis Pompen quality assurance programme is certified by Lloyd's according to ISO 9001 and guarantees that all of its products and services meet all international standards.



**NIJHUIS**  
POMPEN

Nijhuis Pompen  
P.O. Box 102  
NL-7100 AC Winterswijk

Phone +31-543-547474  
Fax +31-543-547475

E-mail: [nijhuis@nijhuispompen.nl](mailto:nijhuis@nijhuispompen.nl)  
Internet: <http://www.nijhuispompen.nl>