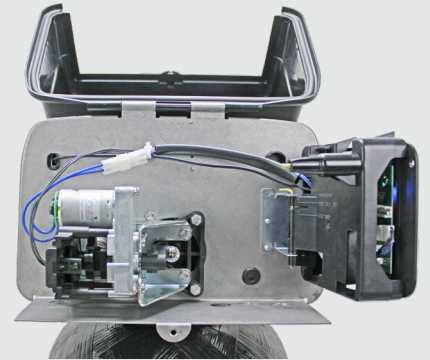
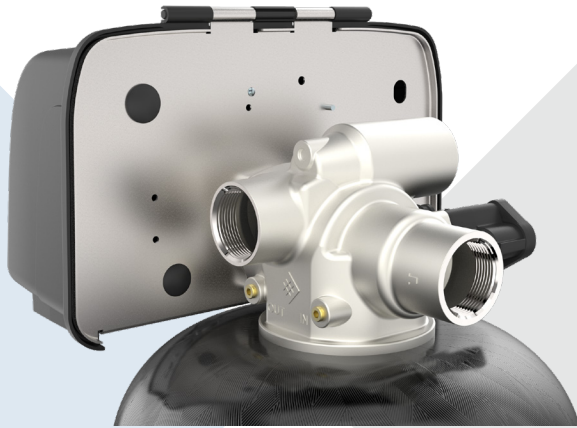




2815 STAINLESS STEEL VALVE

BUILT TO LAST



DEPENDABLE

Stainless steel construction makes this valve more durable and reliable than brass construction

EASY SERVICE

Hinged cover allows quick access to install a one piece seal and spacer cartridge

MEETS REGULATORY STANDARDS

Adheres to strict standards for a truly lead-free material

IMPROVED PERFORMANCE

A 70 gpm backwash rate allows the 2815 to perform on softener tanks up to 36" diameter

COMPATIBLE

Designed to perform on most commercial softener sizes

Contact your local sales rep today or visit waterpurification.pentair.com to learn more



13845 BISHOPS DR., SUITE 200, BROOKFIELD, WI 53005 USA
P: 262.238.4400 | WATERPURIFICATION.PENTAIR.COM | CUSTOMER CARE: 800.279.9404 | tech-support@pentair.com

© 2018 Pentair Residential Filtration, LLC. All rights reserved.

§For a detailed list of where Pentair trademarks are registered, please visit waterpurification.pentair.com/brands. Pentair trademarks and logos are owned by Pentair plc or its affiliates. Third party registered and unregistered trademarks and logos are the property of their respective owners.

4005118 Rev A JL18