

HYDROMATIC[®] HPE SERIES

COOL.
EVEN UNDER
PRESSURE.

**RUNS 40°C COOLER
THAN COMPETITION**

**UP TO \$6000 ANNUAL
ENERGY SAVINGS**

**LOWER MAINTENANCE
COSTS**



HYDROMATIC® HPE SERIES

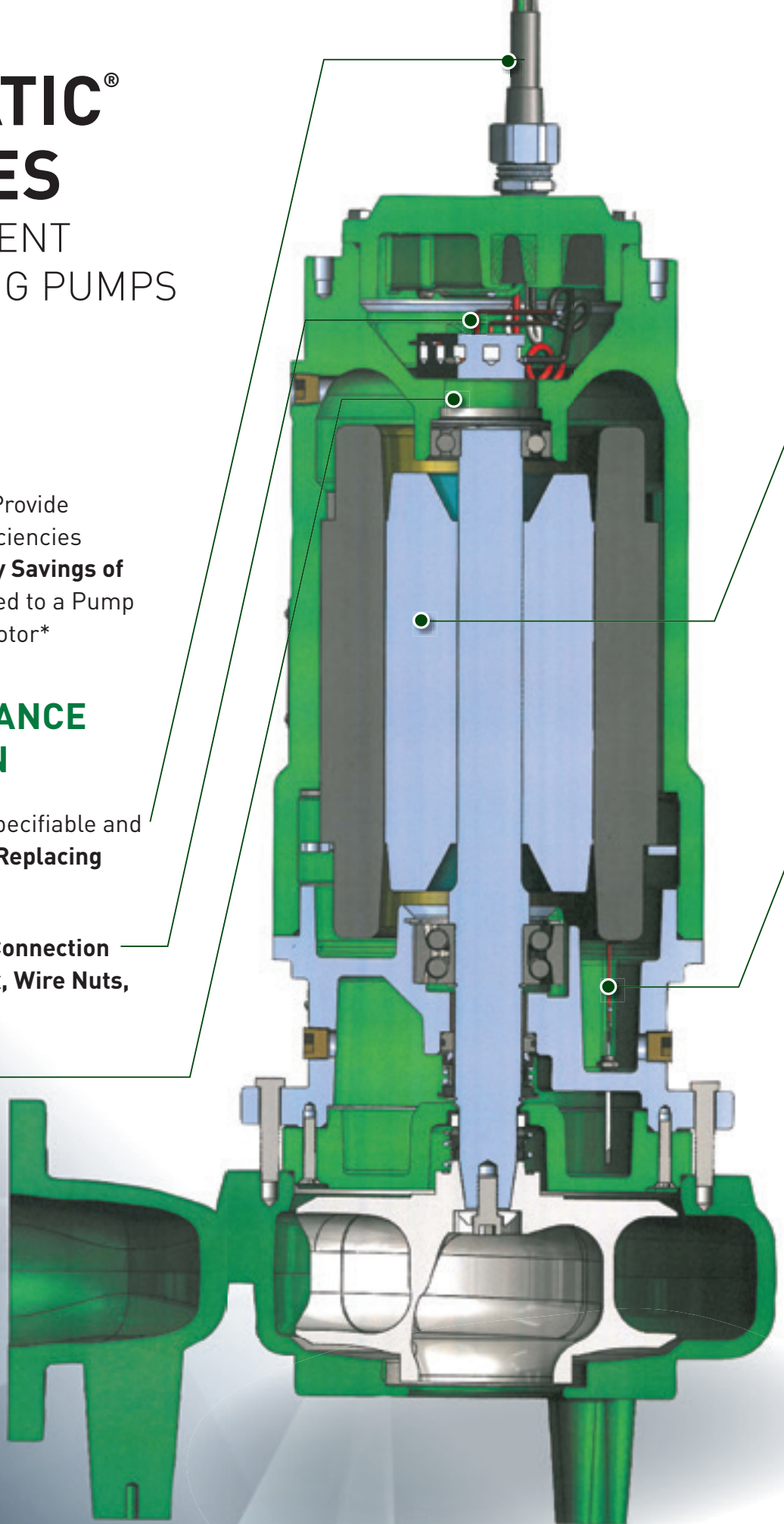
PREMIUM EFFICIENT
SOLIDS HANDLING PUMPS

LOWER COST OF OWNERSHIP

- Premium Efficient Motors Provide Superior Wire to Water Efficiencies **Resulting in Annual Energy Savings of up to \$6000** When Compared to a Pump with a Standard Efficient Motor*

EASE OF MAINTENANCE AND INSTALLATION

- Quick Disconnect Cord is Specifiable and Field Serviceable – **Avoids Replacing Entire Cord Cap**
- Terminal Block – **Positive Connection Eliminates Connection Box, Wire Nuts, Crimp Connectors**
- **Maintenance Free,** Permanently Lubricated Bearings
- **Hazardous Location Construction Standard**
- Seal and Quick Disconnect Cord Replacements will **NOT** void FM/CSA Certification



LONGER PUMP LIFE

- Non-Toxic Oil Filled Motor for Superior Heat Transfer and Decreased Operating Temperature **Runs up to 40°C Cooler Than Competitive Premium Efficiency Air Cooled Motors for Longer Life**
- Continuous Duty Rated Motor, Class H, VFD Rated
- **Seal Leak Detection** – True Early-Warning System, Housed in Seal Chamber to Alert of Liquid Intrusion into Outboard Seal
- **Industry First Shaft Grounding Option for VFD** – Prevents Premature Bearing Failure
- Condition Monitoring – Optional Bearing Temperature Monitor

***Based on:**

- Condition point of 6000 GPM at 60.5 feet of head
- Standard efficient S12L = 139,500 watts and 201.73 amps
- Premium efficient S12LXP = 126,800 watts and 179.77 amps
- Average run time per day = 10 hours
- Average price per KW/hour = \$0.13

HYDROMATIC HPE BEATS THE COMPETITION

FEATURES	HYDROMATIC HPE	COMPETITION
Superior Cooling	✓ Oil-Filled Motor	✗ Air-Filled Motor
Continuous Bearing Lubrication	✓ Continuously Oil Lubricated Maintenance Free Bearings	✗ Grease Packed Bearings That Require Yearly Maintenance
Superior Motor Moisture Protection	✓ Seal Leakage Detection Probes in Lower Seal Chamber	✗ Probes in Motor Housing
Superior Bearing Protection	✓ Optional Shaft Grounding Ring	✗ No Option for Shaft Grounding
Ease of Service	✓ Optional Quick Change-Out Cable Assembly	✗ Quick Change-Out Cables Not Available



QUICK DISCONNECT CABLE

- Easy cord replacement in the field
- Pin and socket joint prevents oil from wicking, vulcanized rubber around the wire acts as a secondary block against moisture



TERMINAL BLOCK*

- Superior electrical connection without the need for wire nuts and crimp connectors
- Reusable. No need to cut wires for service



SHAFT GROUND RING

- Proprietary conductive filaments provide a low impedance path to ground
- Protects the bearings from premature failure caused by VFD induced currents



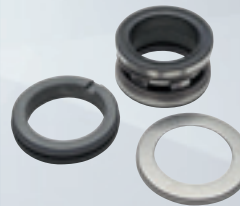
DOUBLE ROW ANGULAR CONTACT BEARINGS

- Absorbs harmful thrust transfer up the motor stack, ensuring positive location of the rotor in the stator
- B10 life of 50,000 hours over the entire operating range for longer times between service calls



CARTRIDGE SEAL

- Robust, balanced seal design offers longer service life
- Reduces risk of improper installation and premature seal failure
- Faster installation saves labor cost (select models only)



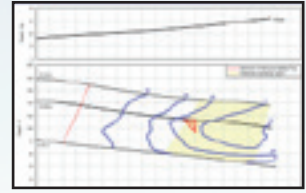
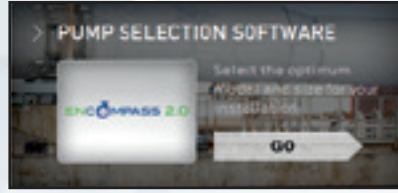
MECHANICAL SEALS

- Type 2100 inboard for durability, less drag and ease of installation
- Type 2 outboard for a wide range of service conditions and reducing downtime
- Silicon carbide as standard, tungsten carbide as option

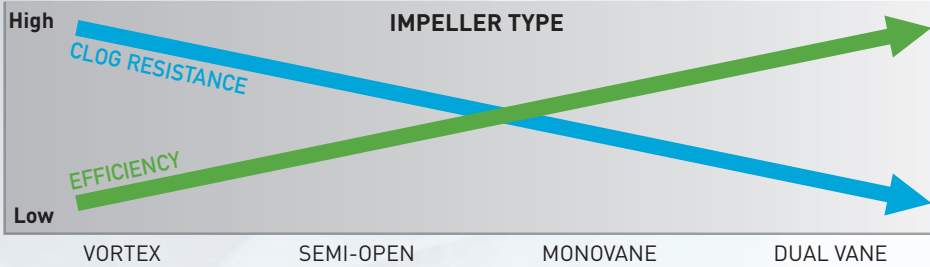
* Terminal block featured on 210 frame pumps, and select 460 volt and 575 volt pumps 250 frame and larger.

CHOOSING THE RIGHT HPE PUMP

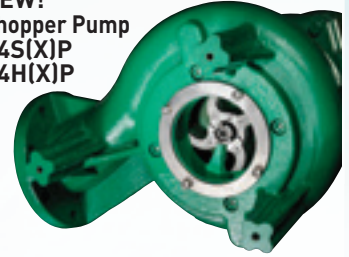
1 Use the online Pump selection tool at www.Hydromatic.com to identify pumps that meet flow and head requirements



2 Choose the right pump based on efficiency and solids handling needs



NEW!
Chopper Pump
C4S(X)P
C4H(X)P



MODEL	DISCHARGE	IMPELLER	MOTOR FRAME	HORSEPOWER			
				870 RPM	1150 RPM	1750 RPM	3450 RPM
H3H(X)P	3"	Monovane	210			7.5-15	
H4H(X)P	4"	Monovane	210			7.5-15	
S4M(X)P	4"	Dual Vane	210		3-5	5-15	
S4MV(X)P	4"	Vortex	210		3-5	5-15	
S4P(X)P	4"	Dual Vane	210			5-15	
S4HV(X)P	4"	Vortex	210				7.5-15
C4S(X)P	4"	Semi-open	210		3-5	7.5-15	
C4H(X)P	4"	Semi-open	250			20-40	
H4Q(X)P	4"	Monovane	250/280			20-50	
S4K(X)P	4"	Dual Vane	250/280			20-50	
S4B(X)P	4"	Dual Vane	250/280	5-7.5	7.5-15	20-50	
S4L(X)P	4"	Dual Vane	250/280	5-7.5	7.5-15	20-50	
S4LV(X)P	4"	Vortex	250/280	5-7.5	7.5-15	20-50	
S4T(X)P	4"	Dual Vane	320/360			75-150	
S6L(X)P	6"	Dual Vane	250/280	5-7.5	7.5-15	20-50	
S6A(X)P	6"	Dual Vane	250/280	5-7.5	7.5-15	20-50	
S8F(X)P	8"	Dual Vane	250/280	5-7.5	7.5-15	20-50	
S8LA(X)P	8"	Dual Vane	320/360			75-150	
S8L(X)P	8"	Dual Vane	320/360	20-25	40-60	75-150	
S12L(X)P	12"	Dual Vane	320/360	20-40	40-75	75-150	

3 Choose your Options

CORD	SEALS	WEAR RINGS	PAINT	OTHER
<input type="checkbox"/> STANDARD or <input type="checkbox"/> QUICK DISCONNECT	<input type="checkbox"/> STANDARD MECHANICAL or <input type="checkbox"/> CARTRIDGE	<input type="checkbox"/> VOLUTE WEAR RING or <input type="checkbox"/> IMPELLER WEAR RING	<input type="checkbox"/> Standard <input type="checkbox"/> Coal Tar Epoxy <input type="checkbox"/> Polyamide Epoxy <input type="checkbox"/> Phenalkamine Epoxy	<input type="checkbox"/> Shaft Ground Ring (for VFD) <input type="checkbox"/> Bearing Temperature Monitor
LENGTH <input type="checkbox"/> 35' <input type="checkbox"/> 50' <input type="checkbox"/> 75' <input type="checkbox"/> 100'	MATERIAL <input type="checkbox"/> Silicon Carbide (standard) <input type="checkbox"/> Silicon Carbide/Fluorocarbon <input type="checkbox"/> Tungsten Carbide/Nitrile <input type="checkbox"/> Tungsten Carbide/Fluorocarbon	MATERIAL <input type="checkbox"/> Standard <input type="checkbox"/> 304 SST <input type="checkbox"/> 410 SST <input type="checkbox"/> Bronze		



1101 MYERS PARKWAY, ASHLAND, OH 44805 WWW.HYDROMATIC.COM
PH: 855-274-8948

VISIT OUR WEBSITE AT 
www.HydromaticHPE.com



Because we are continuously improving our products and services, Pentair reserves the right to change specifications without prior notice.