

Nylon Line Strainers

1/4" through 1-1/2" sizes (See other side for polypropylene list.)

California Proposition 65 Warning --
 This product and related accessories contain chemicals known to the State of California to cause cancer, birth defects or other reproductive harm.

Specifications

This low-profile strainer features both 1/4" NPT internal and 1/2" NPT external threads. A clear polyamide bowl allows for visual inspection without disassembly.

Strainers (Ref. 2, 3, 4 & 5) are available in 1/2", 3/4", 1", 1-1/4" and 1-1/2" NPT internal threads. A white bowl is standard and a clear polyamide bowl is optional.

The cap and bowl are made of nylon 6. (Designate the optional clear polyamide bowl by adding a "P" suffix to the model number.) Screens come in 20, 50 or 80-mesh stainless steel. Buna-N or Viton gaskets are available.

Ratings: 150 psi at 70° F, 100 psi at 125° F. (140° F is the maximum temperature.)



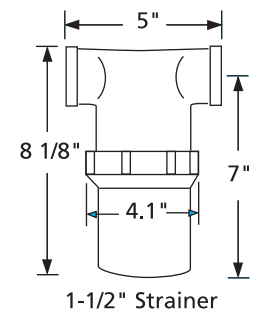
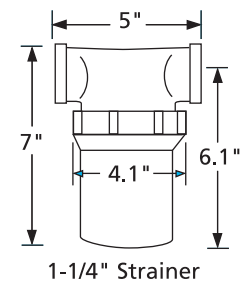
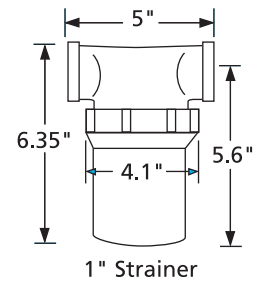
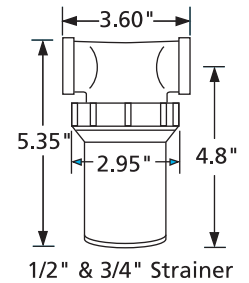
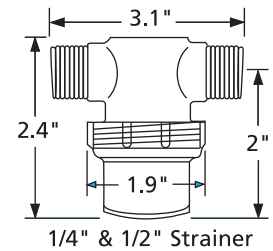
Installation

In most circumstances, install the line strainer on the inlet side of the pump. If using a centrifugal pump, a strainer can be installed on either the inlet or discharge side, depending on the strainer flow capacity, strainer pressure rating and other installation factors. The arrow molded in the strainer cap indicates flow of liquid.

NOTE: The clear polyamide bowl is not recommended for use with alcohol.

Clean the strainer without removing it from the line. Simply unscrew the bowl from the cap and take out the screen. Next, flush the sediment from the screen. Reassemble the strainer by first fitting the screen to the flange in the bowl. Turn the bowl hand tight, which provides a sufficient seal against the cap. **NOTE: Not recommended for fatigue-loading applications such as water softeners.**

Dimensions (in inches)



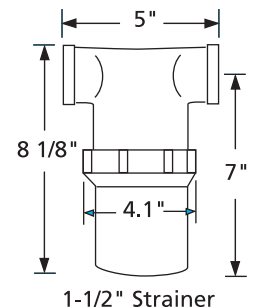
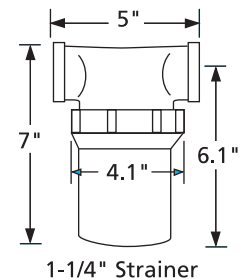
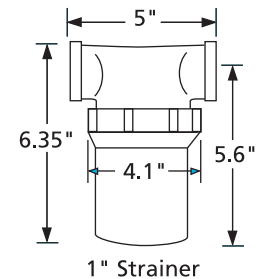
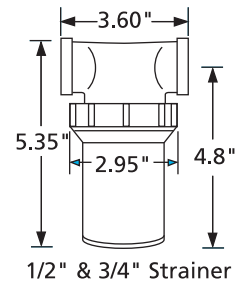
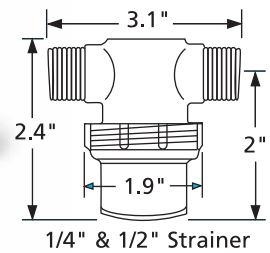
Line Strainer Data

NPT Threads	Model Number	Screen	Gasket	Open Area	Parts List			
					Cap	Bowl	Screen	Gasket
1/4" I.D. and 1/2" O.D.	3350-0085	20 SS	Buna-N	2.17 sq. in.	3351-0022	3351-0020	3800-0048	1700-0064
	3350-0085F	20 SS	Viton	2.17 sq. in.	3351-0022	3351-0020	3800-0048	1700-0065
	3350-0079	50 SS	Buna-N	1.75 sq. in.	3351-0022	3351-0020	3800-0046	1700-0064
	3350-0079F	50 SS	Viton	1.75 sq. in.	3351-0022	3351-0020	3800-0046	1700-0065
	3350-0082	80 SS	Buna-N	1.34 sq. in.	3351-0022	3351-0020	3800-0047	1700-0064
	3350-0082F	80 SS	Viton	1.34 sq. in.	3351-0022	3351-0020	3800-0047	1700-0065
1/2"	3350-0131	20 SS	Viton	9.6 sq. in.	3351-0007		3800-0029	1700-0045
	3350-0056	20 SS	Buna-N	9.6 sq. in.	3351-0007	Clear Bowl	3800-0029	1700-0044
	3350-0046	50 SS	Buna-N	7.7 sq. in.	3351-0007	3351-0015	3800-0025	1700-0044
	3350-0042	50 SS	Viton	7.7 sq. in.	3351-0007	White Bowl	3800-0025	1700-0045
	3350-0043	80 on 20 SS	Buna-N	5.9 sq. in.	3351-0007	3351-0005	3800-0026	1700-0044
	3350-0068	80 on 20 SS	Viton	5.9 sq. in.	3351-0007	3351-0005	3800-0026	1700-0045
3/4"	3350-0132	20 SS	Viton	9.6 sq. in.	3351-0006		3800-0029	1700-0045
	3350-0040	20 SS	Buna-N	9.26 sq. in.	3351-0006	Clear Bowl	3800-0029	1700-0044
	3350-0034	50 SS	Buna-N	7.7 sq. in.	3351-0006	3351-0015	3800-0025	1700-0044
	3350-0044	50 SS	Viton	7.7 sq. in.	3351-0006	White Bowl	3800-0025	1700-0045
	3350-0035	80 on 20 SS	Buna-N	5.9 sq. in.	3351-0006	3351-0005	3800-0026	1700-0044
	3350-0045	80 on 20 SS	Viton	5.9 sq. in.	3351-0006	3351-0005	3800-0026	1700-0045
1"	3350-0057	20 SS	Buna-N	16.8 sq. in.	3351-0014		3800-0040	1700-0057
	3350-0060	20 SS	Viton	16.8 sq. in.	3351-0014	Clear Bowl	3800-0040	1700-0058
	3350-0058	50 SS	Buna-N	13.5 sq. in.	3351-0014	3351-0024	3800-0041	1700-0057
	3350-0061	50 SS	Viton	13.5 sq. in.	3351-0014	White Bowl	3800-0041	1700-0058
	3350-0059	80 on 20 SS	Buna-N	10 sq. in.	3351-0014	3351-0013	3800-0042	1700-0057
	3350-0062	80 on 20 SS	Viton	10 sq. in.	3351-0014	3351-0013	3800-0042	1700-0058
1-1/4"	3350-0071	20 SS	Buna-N	18 sq. in.	3351-0016		3800-0043	1700-0057
	3350-0074	20 SS	Viton	18 sq. in.	3351-0016	Clear Bowl	3800-0043	1700-0058
	3350-0072	50 SS	Buna-N	14.5 sq. in.	3351-0016	3351-0024	3800-0044	1700-0057
	3350-0075	50 SS	Viton	14.5 sq. in.	3351-0016	White Bowl	3800-0044	1700-0058
	3350-0073	80 on 20 SS	Buna-N	11 sq. in.	3351-0016	3351-0013	3800-0045	1700-0057
	3350-0076	80 on 20 SS	Viton	11 sq. in.	3351-0016	3351-0013	3800-0045	1700-0058
1-1/2"	3350-0112	20 SS	Buna-N	20.8 sq. in.	3351-0026		3800-0065	1700-0057
	3350-0115	20 SS	Viton	20.8 sq. in.	3351-0026	Clear Bowl	3800-0065	1700-0058
	3350-0113	50 SS	Buna-N	16.4 sq. in.	3351-0026	3351-0024	3800-0066	1700-0057
	3350-0116	50 SS	Viton	16.4 sq. in.	3351-0026	White Bowl	3800-0066	1700-0058
	3350-0114	80 on 20 SS	Buna-N	12.4 sq. in.	3351-0026	3351-0013	3800-0067	1700-0057
	3350-0117	80 on 20 SS	Viton	12.4 sq. in.	3351-0026	3351-0013	3800-0067	1700-0058

HYPRO®

Polypropylene Line Strainers

 1/4" through 1-1/2" sizes
 (See other side for nylon list.)

**Dimensions
(In Inches)**


California Proposition 65 Warning --
 This product and related accessories contain chemicals known to the State of California to cause cancer, birth defects or other reproductive harm.

Specifications

This low-profile strainer features both 1/4" NPT internal and 1/2" NPT external threads. Strainers (Ref. 2, 3, 4 & 5) are available in 1/2", 3/4", 1", 1-1/4" and 1-1/2" NPT internal threads.

The cap and bowl are available in black polypropylene. Screens come in 20, 50 or 80-mesh stainless steel. EPDM gaskets are standard.

Ratings: 80 psi at 70° F.

Installation

In most circumstances, install the line strainer on the inlet side of the pump. If using a centrifugal pump, a strainer can be installed on either the inlet or discharge side, depending on the strainer flow capacity, strainer pressure rating and other installation factors. The arrow molded in the strainer cap indicates flow of liquid.

Clean the strainer without removing it from the line. Simply unscrew the bowl from the cap and take out the screen. Next, flush the sediment from the screen. Reassemble the strainer by first fitting the screen to the flange in the bowl. Turn the bowl hand tight, which provides a sufficient seal against the cap. **NOTE: Not recommended for fatigue-loading applications such as water softeners.**

Line Strainer Data

NPT Number	Model Threads	Screen	Gasket	Open Area (sq. in.)	Parts List			
					Cap	Bowl	Screen	Gasket
1/4" I.D. & 1/2" O.D.	3350-0085A	20 SS	EPDM	2.17	3351-0035	3351-0036	3800-0048	1700-0090
	3350-0079A	50 SS	EPDM	1.75	3351-0035	3351-0036	3800-0046	1700-0090
	3350-0082A	80 SS	EPDM	1.34	3351-0035	3351-0036	3800-0047	1700-0090
1/2"	3350-0056A	20 SS	EPDM	9.6	3351-0037	3351-0039	3800-0029	1700-0091
	3350-0046A	50 SS	EPDM	7.7	3351-0037	3351-0039	3800-0025	1700-0091
	3350-0043A	80 on 20 SS	EPDM	5.9	3351-0037	3351-0039	3800-0026	1700-0091
3/4"	3350-0040A	20 SS	EPDM	9.6	3351-0038	3351-0039	3800-0029	1700-0091
	3350-0034A	50 SS	EPDM	7.7	3351-0038	3351-0039	3800-0025	1700-0091
	3350-0035A	80 on 20 SS	EPDM	5.9	3351-0038	3351-0039	3800-0026	1700-0091
1"	3350-0057A	20 SS	EPDM	16.8	3351-0040	3351-0043	3800-0040	1700-0092
	3350-0058A	50 SS	EPDM	13.5	3351-0040	3351-0043	3800-0041	1700-0092
	3350-0059A	80 on 20 SS	EPDM	10.0	3351-0040	3351-0043	3800-0042	1700-0092
1-1/4"	3350-0071A	20 SS	EPDM	18.0	3351-0041	3351-0043	3800-0043	1700-0092
	3350-0072A	50 SS	EPDM	14.5	3351-0041	3351-0043	3800-0044	1700-0092
	3350-0073A	80 on 20 SS	EPDM	11.0	3351-0041	3351-0043	3800-0045	1700-0092
1-1/2"	3350-0112A	20 SS	EPDM	20.0	3351-0042	3351-0043	3800-0065	1700-0092
	3350-0113A	50 SS	EPDM	16.4	3351-0042	3351-0043	3800-0066	1700-0092
	3350-0114A	80 on 20 SS	EPDM	12.4	3351-0042	3351-0043	3800-0067	1700-0092