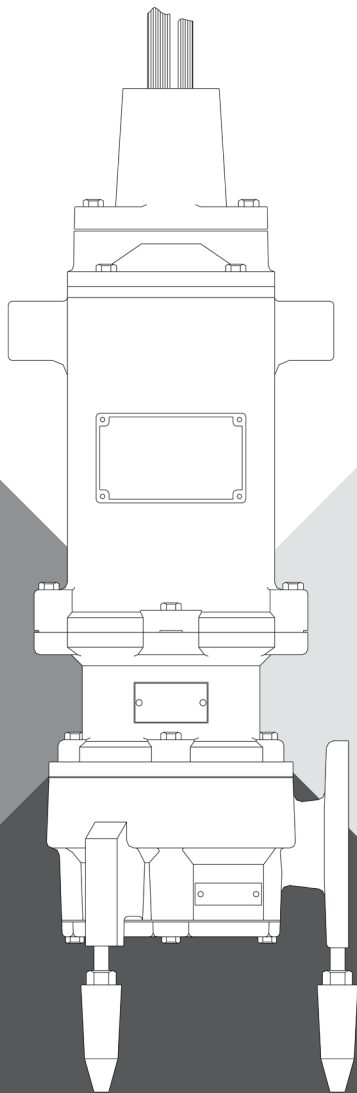




## CHOPPER & GRINDER PUMPS



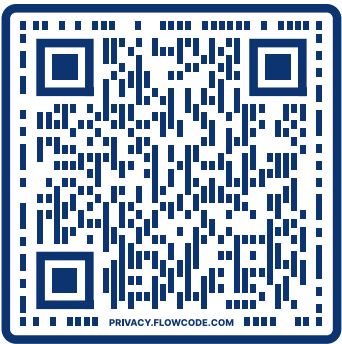
## REPAIR KITS AND PARTS GUIDE

[pentair.com/myers](http://pentair.com/myers)

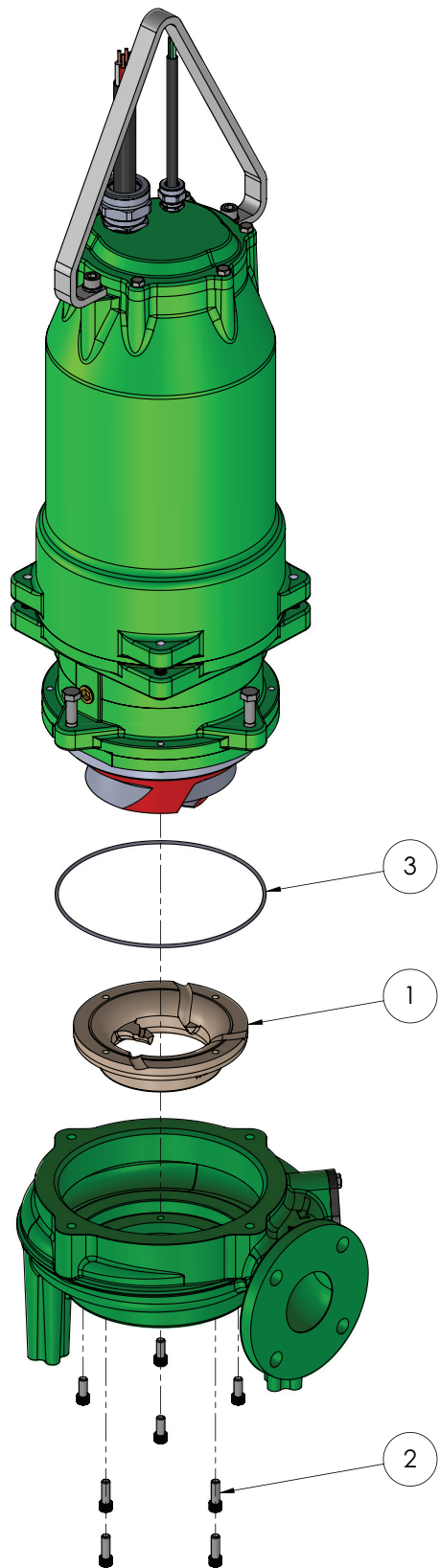
# TABLE OF CONTENTS

SECTION	PAGE NO.
<b>MYERS CHOPPER PUMPS</b>	
Worn Cutter Repair Kit (FM1).....	3
Mechanical Seal Repair Kit (FM2).....	4
Overhaul Kit (FM3).....	5
<b>MYERS GRINDER PUMPS</b>	
Worn Cutter Repair Kit (FM1).....	6
Mechanical Seal Repair Kit (FM2).....	7
Overhaul Kit (FM3).....	8
Notes Pages.....	9
Standard Limited Warranty.....	12

**READY TO ORDER YOUR KIT?  
SCAN THIS CODE TO LOCATE  
YOUR NEAREST MYERS  
AUTHORIZED DISTRIBUTOR**



# MYERS CHOPPER PUMPS - WORN CUTTER REPAIR KIT (FM1)



## PARTS INCLUDED IN WORN CUTTER REPAIR KIT

PART NO.	PART DESCRIPTION	QTY
1	Liner, Cutter	1
2	Screw, Cutter Liner	4*
3	Volute O-Ring	1

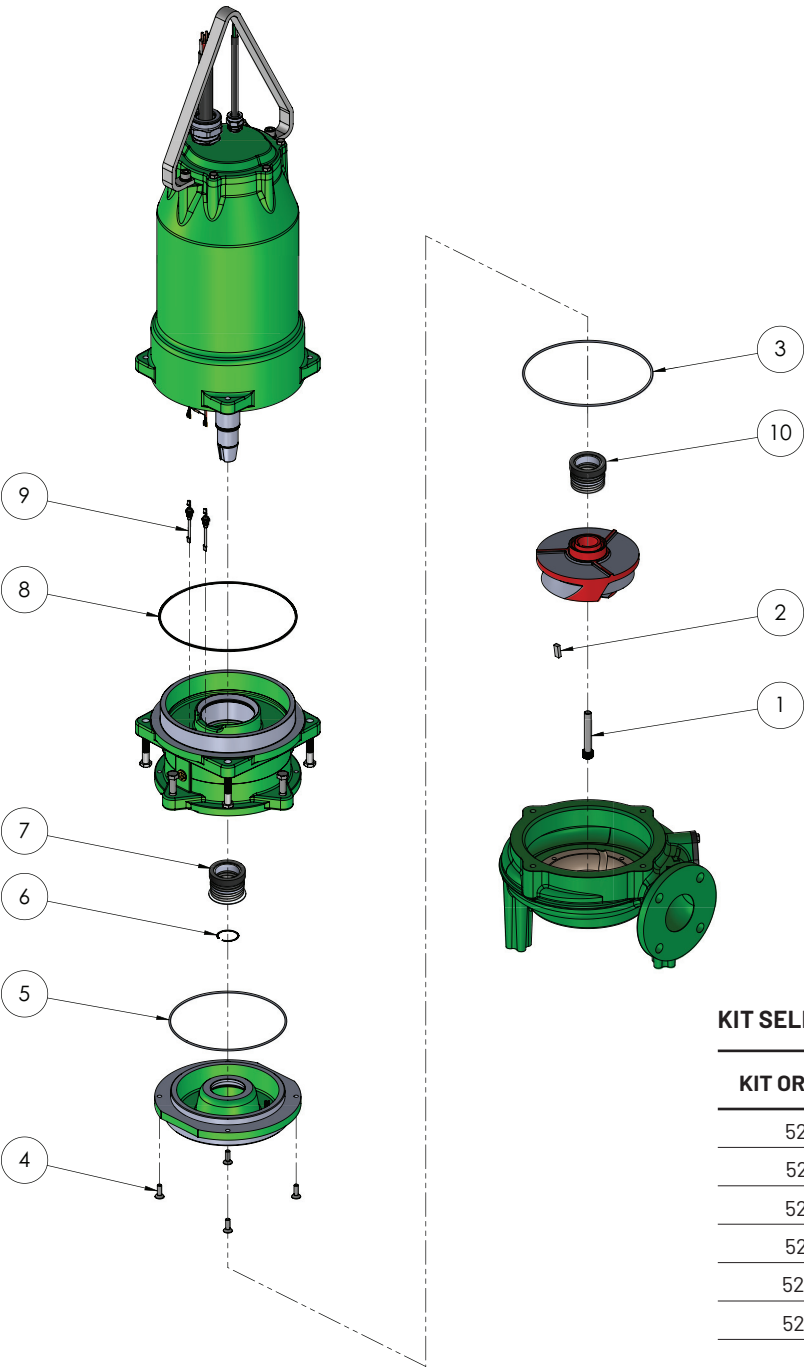
## KIT SELECTION TABLE

KIT ORDERING NO.	SERIES
528811707	MNG3SC, MNG3SCX, MNG4SC, MNG4SCX
528811717	MNG6MC, MNG6MCX
528811727	MNG4HC, MNG4HCX
528811737	MNG4SD, MNG4SDX
528811747	MNG6MD, MNG6MDX
528811757	MNG4HD, MNG4HDX

## NOTES

- 1. \*QUANTITY MAY CHANGE FOR DIFFERENT PUMP SIZES.
- 2. CUTTER PLATE, CUTTER INSERT, CUTTER INSERT SCREW MAY OR MAY NOT APPEAR IN DIFFERENT PUMP CONFIGURATIONS.
- 3. KITS AND PARTS ARE FOR ORDINARY LOCATION PUMP SERIES ONLY, UNLESS OTHERWISE NOTED AS SUITABLE FOR HAZARDOUS LOCATION (SERIES NUMBERS CONTAINING 'X').
- 4. HAZARDOUS LOCATION PUMPS MUST BE RETURNED TO THE FACTORY FOR ELECTRICAL AND MOTOR SERVICE. REMOVAL OF SEAL PLATE WILL VOID FM LISTINGS ON SOME MODELS.

# MYERS CHOPPER PUMPS - MECHANICAL SEAL REPAIR KIT (FM2)



## PARTS INCLUDED IN MECHANICAL SEAL REPAIR KIT

PART NO.	PART DESCRIPTION	QTY
1	Impeller Screw	1
2	Impeller Key	1
3	Volute O-Ring	1
4	Seal Plate Screw	4*
5	Seal Plate O-Ring	1
6	Retaining Ring, Upper Seal	1
7	Upper Mechanical Seal**	1
8	Motor O-Ring	1
9	Seal Leak Probe	2
10	Lower Mechanical Seal**	1

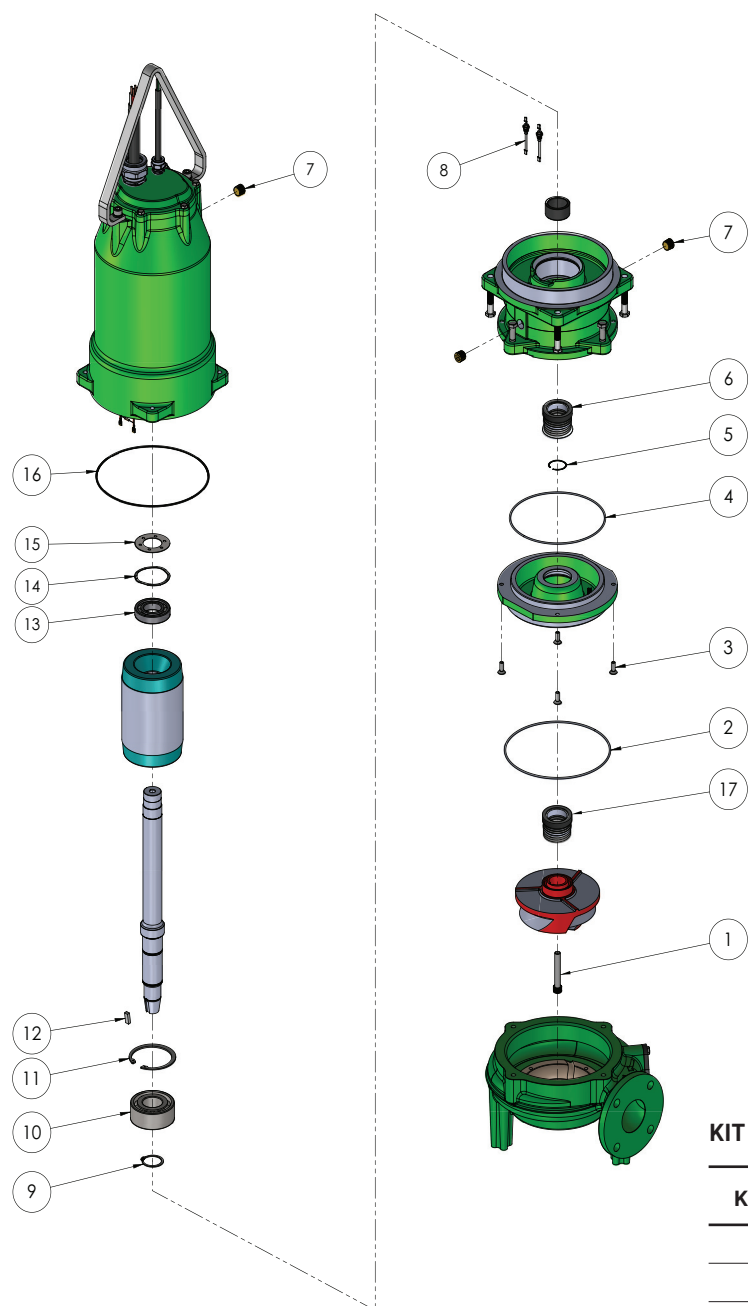
## KIT SELECTION TABLE

KIT ORDERING NO.	SERIES
528811767	MNG3SC, MNG4SC
528811777	MNG4HC, MNG6MC
528811787	MNG4HDX, MNG4SDX, MNG6MDX
528811797	MNG4HD, MNG4SD, MNG6MD
528814067	MNG3SCX, MNG4SCX
528814077	MNG4HCX, MNG6MCX

### NOTES

- 1. \*QUANTITY MAY CHANGE FOR DIFFERENT PUMP SIZES.
- 2. \*\*MECH SEAL #7 & #10 CAN BE SAME OR DIFFERENT IN DIFFERENT PUMP CONFIGURATIONS.
- 3. OIL AND LOCTITE NOT INCLUDED, PURCHASE SEPARATELY.
- 4. SEAL CARTRIDGE, LOWER AND UPPER MECHANICAL SEAL MAY OR MAY NOT APPEAR IN DIFFERENT PUMP CONFIGURATIONS.
- 5. KITS AND PARTS ARE FOR ORDINARY LOCATION PUMP SERIES ONLY, UNLESS OTHERWISE NOTED AS SUITABLE FOR HAZARDOUS LOCATION (SERIES NUMBERS CONTAINING 'X').
- 6. HAZARDOUS LOCATION PUMPS MUST BE RETURNED TO THE FACTORY FOR ELECTRICAL AND MOTOR SERVICE. REMOVAL OF SEAL PLATE WILL VOID FM LISTINGS ON SOME MODELS.

## MYERS CHOPPER PUMPS - OVERHAUL KIT (FM3)



### PARTS INCLUDED IN MECHANICAL SEAL REPAIR KIT

PART NO.	PART DESCRIPTION	QTY
1	Impeller Screw	1
2	Volute O-Ring	1
3	Seal Plate Screw	4*
4	Seal Plate O-Ring	1
5	Retaining Ring, Upper Seal	1
6	Upper Mechanical Seal	1
7	Plug	3*
8	Seal Leak Probe	2
9	Retaining Ring, External	1
10	Lower Bearing	1
11	Retaining Ring, Internal	1
12	Impeller Key	1
13	Upper Bearing	1
14	Washer	1*
15	Screen	1
16	Motor Housing O-Ring	1
17	Lower Mechanical Seal	1

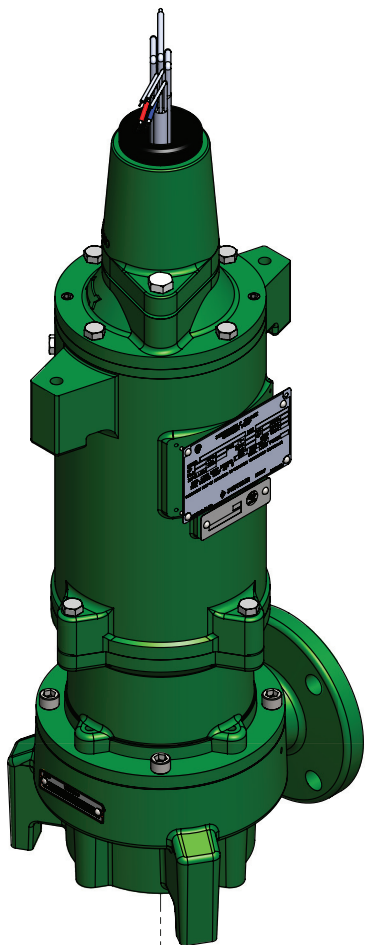
### KIT SELECTION TABLE

KIT ORDERING NO.	SERIES
528811807	MNG3SC, MNG4SC
528811817	MNG4HC, MNG6MC
528811827	MNG4HD, MNG4SD, MNG6MD

### NOTES

- \*QUANTITY MAY CHANGE FOR DIFFERENT PUMP SIZES.
- \*\*MECH SEAL #6 & #17 CAN BE SAME OR DIFFERENT IN DIFFERENT PUMP CONFIGURATIONS.
- OIL AND LOCTITE NOT INCLUDED, PURCHASE SEPARATELY.
- SEAL CARTRIDGE, LOWER AND UPPER MECHANICAL SEAL, RETAINING RING FOR UPPER MECHANICAL SEAL, SEAL SENSOR MAY OR MAY NOT APPEAR IN DIFFERENT PUMP CONFIGURATIONS.
- KITS AND PARTS ARE FOR ORDINARY LOCATION PUMP SERIES ONLY, UNLESS OTHERWISE NOTED AS SUITABLE FOR HAZARDOUS LOCATION (SERIES NUMBERS CONTAINING 'X').

MYERS GRINDER PUMPS - WORN CUTTER REPAIR KIT (FM1)



PARTS INCLUDED IN WORN CUTTER REPAIR KIT

PART NO.	PART DESCRIPTION	QTY
1	Impeller Screw	1
2	Retainer, Impeller	1
3	Screw, Shredding Ring	4*
4	Clamp, Shredding Ring	1
5	Ring, Shredding	1
6	Impeller Grinder	1

KIT SELECTION TABLE (1-2 HP)

KIT ORDERING NO.	SERIES (1-2HP)
528811427	VF20
528811437	VS20, VH20
528811447	VRS10
528811457	VRH
528811467	VRF
528811477	VRS20
528811487	WG20, WGL20, WGX20
528811497	WGL20H
528811507	WGL20F

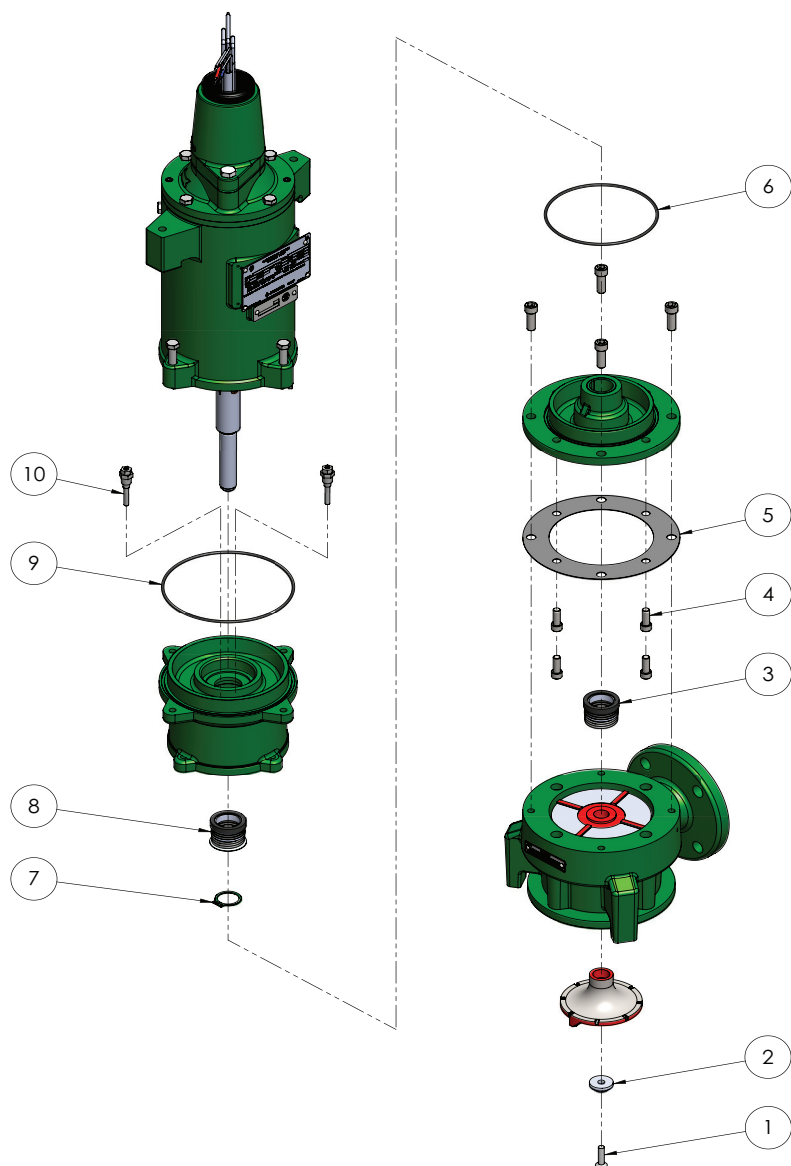
KIT SELECTION TABLE (3-7.5 HP)

KIT ORDERING NO.	SERIES (3-7.5 HP)
528811577	VS30, VS50, VSX30, VSX50
528811587	VH30, VH50, VH75, VHX30, VHX50, VHX75
528811597	WG100H, WG150H, WG75HH, WGX100H, WGX150H, WGX75HH
528811607	WG30, WG50, WGX30, WGX50
528811617	WG30H, WG50H, WG75H, WGX30H, WGX50H, WGX75H

NOTES

- 1. \*QUANTITY MAY CHANGE FOR DIFFERENT PUMP SIZES.
- 2. IMPELLER SPACER, STATIONARY CUTTER, ROTATING CUTTER, CUTTER SHIM, SHREDDING RING SET SCREW, SCREW FOR STATIONARY CUTTER MAY OR MAY NOT APPEAR IN DIFFERENT PUMP CONFIGURATIONS.
- 3. KITS AND PARTS ARE FOR ORDINARY LOCATION PUMP SERIES ONLY, UNLESS OTHERWISE NOTED AS SUITABLE FOR HAZARDOUS LOCATION (SERIES NUMBERS CONTAINING 'X').
- 4. HAZARDOUS LOCATION PUMPS MUST BE RETURNED TO THE FACTORY FOR ELECTRICAL AND MOTOR SERVICE. REMOVAL OF SEAL PLATE WILL VOID FM LISTINGS ON SOME MODELS.

## MYERS GRINDER PUMPS - MECHANICAL SEAL REPAIR KIT (FM2)



### PARTS INCLUDED IN MECHANICAL SEAL REPAIR KIT

PART NO.	PART DESCRIPTION	QTY
1	Impeller Screw	1
2	Retainer, Impeller	1
3	Lower Mechanical Seal**	1
4	Seal Plate Screw	4*
5	Volute Gasket	1
6	Seal Plate O-Ring	1
7	Retaining Ring	1
8	Upper Mechanical Seal**	1
9	Motor O-Ring	1
10	Seal Probe	2*

### KIT SELECTION TABLE (1-2 HP)

KIT ORDERING NO.	SERIES (1-2 HP)
528811517	VF20
528811527	VH20, VS20
528811537	VRS10
528811547	VRF, VRH, VRS20
528811557	WGL20, WGL20F, WGL20H
528811567	WG20, WGX20

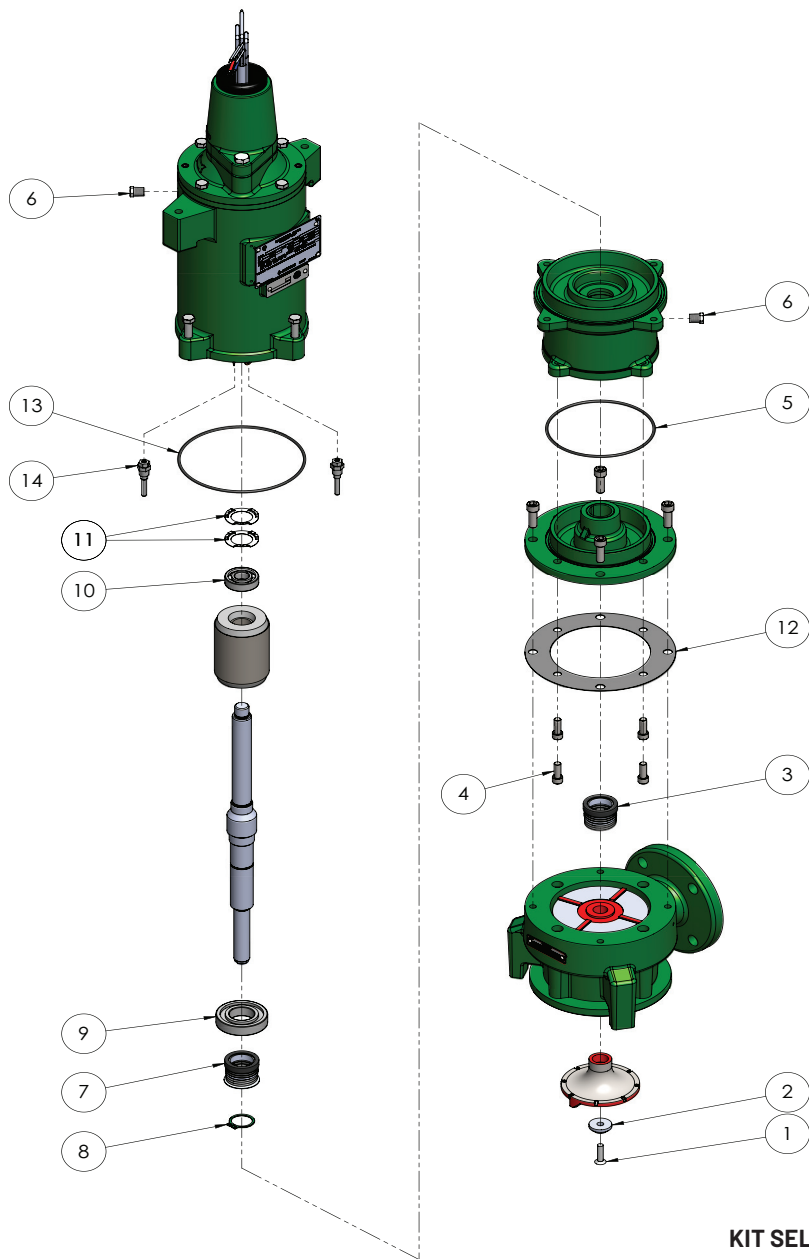
### KIT SELECTION TABLE (3-7.5 HP)

KIT ORDERING NO.	SERIES (3-7.5 HP)
528811627	WG100H, WG150H, WG75HH, WGX100H, WGX150H, WGX75HH
528811637	VH30, VH50, VH75, VHX30, VHX50, VHX75, VS30, VS50, VSX30, VSX50
528811647	WG30H, WG50H, WG75H, WGX30H, WGX50H, WGX75H
528811657	WG30, WG50, WGX30, WGX50

### NOTES

- \*QUANTITY MAY CHANGE FOR DIFFERENT PUMP SIZES.
- \*\*MECH SEAL #3 & #8 CAN BE SAME OR DIFFERENT IN DIFFERENT PUMP CONFIGURATIONS.
- OIL AND LOCTITE NOT INCLUDED, PURCHASE SEPARATELY.
- IMPELLER SPACER, IMPELLER KEY, CUTTER SHIM, VOLUTE SHIM, VOLUTE O-RING MAY OR MAY NOT APPEAR IN DIFFERENT PUMP CONFIGURATIONS.
- KITS AND PARTS ARE FOR ORDINARY LOCATION PUMP SERIES ONLY, UNLESS OTHERWISE NOTED AS SUITABLE FOR HAZARDOUS LOCATION (SERIES NUMBERS CONTAINING 'X').
- HAZARDOUS LOCATION PUMPS MUST BE RETURNED TO THE FACTORY FOR ELECTRICAL AND MOTOR SERVICE. REMOVAL OF SEAL PLATE WILL VOID FM LISTINGS ON SOME MODELS.

## MYERS GRINDER PUMPS - OVERHAUL KIT (FM3)



### PARTS INCLUDED IN OVERHAUL KIT

PART NO.	PART DESCRIPTION	QTY
1	Impeller Screw	1
2	Retainer, Impeller	1
3	Lower Mechanical Seal**	1
4	Seal Plate Screw	4*
5	Seal Plate O-Ring	1
6	Plug	2*
7	Upper Mechanical Seal**	1
8	Retaining Ring	1
9	Lower Bearing	1
10	Upper Bearing	1
11	Spring Washer	2
12	Volute Gasket	1
13	Motor Housing O-Ring	1
14	Seal Probe	2*

### KIT SELECTION TABLE

KIT ORDERING NO.	SERIES (3-7.5 HP)
528811667	WG100H, WG150H, WG75HH
528811677	VH30, VH50, VH75, VS30, VS50
528811687	WG30H, WG50H, WG75H
528811697	WG30, WG50

### NOTES

1. \*QUANTITY MAY CHANGE FOR DIFFERENT PUMP SIZES.
2. \*\*MECH SEAL #3 & #7 CAN BE SAME OR DIFFERENT IN DIFFERENT PUMP CONFIGURATIONS.
3. OIL AND LOCTITE NOT INCLUDED, PURCHASE SEPARATELY.
4. IMPELLER KEY, CUTTER SHIM, RETAINING RINGS FOR LOWER BEARING MAY OR MAY NOT APPEAR IN DIFFERENT PUMP CONFIGURATIONS.
5. KITS AND PARTS ARE FOR ORDINARY LOCATION PUMP SERIES ONLY, UNLESS OTHERWISE NOTED AS SUITABLE FOR HAZARDOUS LOCATION (SERIES NUMBERS CONTAINING 'X').



NOTES PAGE

NOTES PAGE

NOTES PAGE

## STANDARD LIMITED WARRANTY

---

Pentair Myers® warrants its products against defects in material and workmanship for a period of 12 months from the date of shipment from Pentair Myers or 18 months from the manufacturing date, whichever occurs first – provided that such products are used in compliance with the requirements of the Pentair Myers catalog and technical manuals for use in pumping raw sewage, municipal wastewater or similar, abrasive-free, noncorrosive liquids.

During the warranty period and subject to the conditions set forth, Pentair Myers, at its discretion, will repair or replace to the original user, the parts that prove defective in materials and workmanship. Pentair Myers reserves the right to change or improve its products or any portions thereof without being obligated to provide such a change or improvement for prior sold and/or shipped units.

Start-up reports and electrical schematics may be required to support warranty claims. Submit at the time of start-up through the Pentair Myers website: <http://forms.pentairliterature.com/startupform/startupform.asp?type=m>. Warranty is effective only if Pentair Myers authorized control panels are used. All seal fail and heat sensing devices must be hooked up, functional and monitored or this warranty will be void. Pentair Myers will cover only the lower seal and labor thereof for all dual seal pumps. Under no circumstance will Pentair Myers be responsible for the cost of field labor, travel expenses, rented equipment, removal/reinstallation costs or freight expenses to and from the factory or an authorized Pentair Myers service facility.

This limited warranty will not apply: (a) to defects or malfunctions resulting from failure to properly install, operate or maintain the unit in accordance with the printed instructions provided; (b) to failures resulting from abuse, accident or negligence; (c) to normal maintenance services and parts used in connection with such service; (d) to units that are not installed in accordance with applicable local codes, ordinances and good trade practices; (e) if the unit is moved from its original installation location; (f) if unit is used for purposes other than for what it is designed and manufactured; (g) to any unit that has been repaired or altered by anyone other than Pentair Myers or an authorized Pentair Myers service provider; (h) to any unit that has been repaired using non factory specified/OEM parts.

**Warranty Exclusions:** PENTAIR MYERS MAKES NO EXPRESS OR IMPLIED WARRANTIES THAT EXTEND BEYOND THE DESCRIPTION ON THE FACE HEREOF. PENTAIR MYERS SPECIFICALLY DISCLAIMS THE IMPLIED WARRANTIES OF MERCHANTABILITY AND FITNESS FOR ANY PARTICULAR PURPOSE.

**Liability Limitation:** IN NO EVENT SHALL PENTAIR MYERS BE LIABLE OR RESPONSIBLE FOR CONSEQUENTIAL, INCIDENTAL OR SPECIAL DAMAGES RESULTING FROM OR RELATED IN ANY MANNER TO ANY PENTAIR MYERS PRODUCT OR PARTS THEREOF. PERSONAL INJURY AND/OR PROPERTY DAMAGE MAY RESULT FROM IMPROPER INSTALLATION. PENTAIR MYERS DISCLAIMS ALL LIABILITY, INCLUDING LIABILITY UNDER THIS WARRANTY, FOR IMPROPER INSTALLATION. PENTAIR MYERS RECOMMENDS INSTALLATION BY PROFESSIONALS.

Some states do not permit some or all of the above warranty limitations or the exclusion or limitation of incidental or consequential damages and therefore such limitations may not apply to you. No warranties or representations at any time made by any representatives of Pentair Myers shall vary or expand the provision hereof.



1101 Myers Parkway | Ashland, OH 44805 | Ph: 855.274.8947 | [pentair.com/myers](http://pentair.com/myers)

All indicated Pentair trademarks and logos are property of Pentair. Third party registered and unregistered trademarks and logos are the property of their respective owners.

©2025 Pentair. All Rights Reserved.

MY4403(06-26-25)