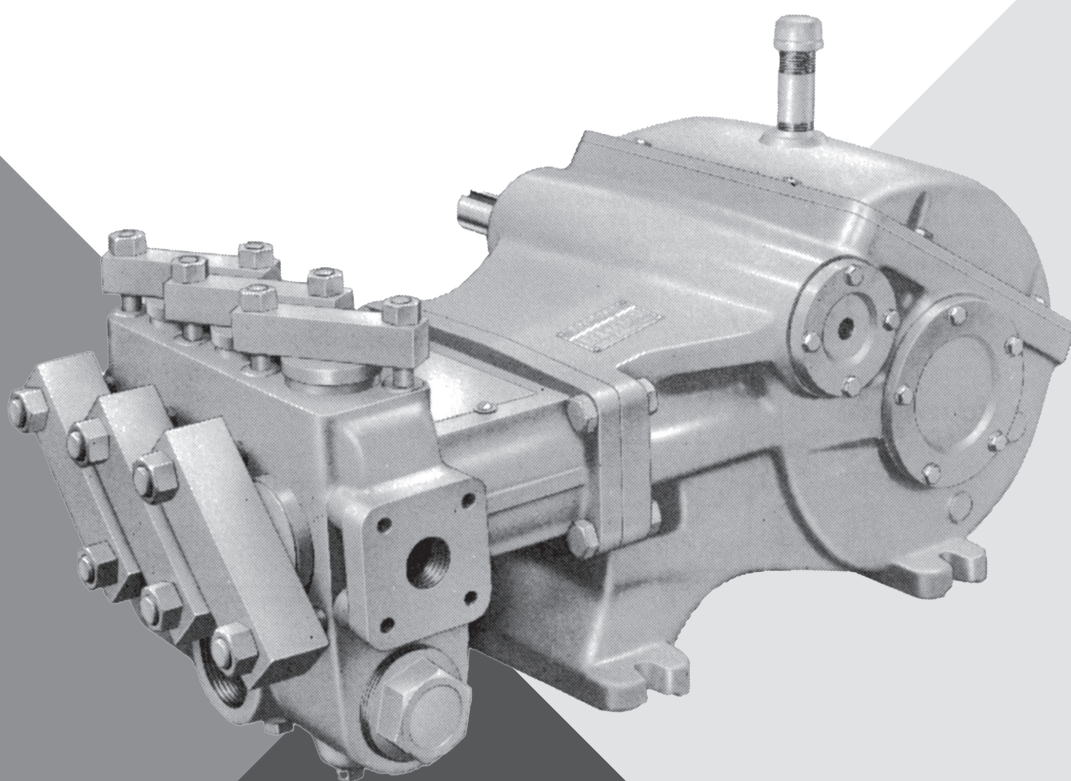




RECIPROCATING PUMPS



MY4402 / 23833A753 (06-26-25)

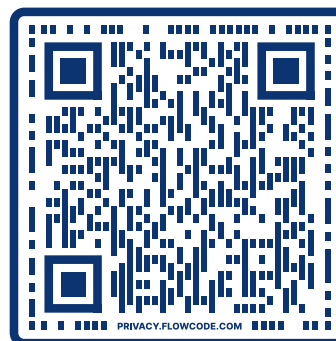
REPAIR KITS AND PARTS GUIDE

pentair.com/myers

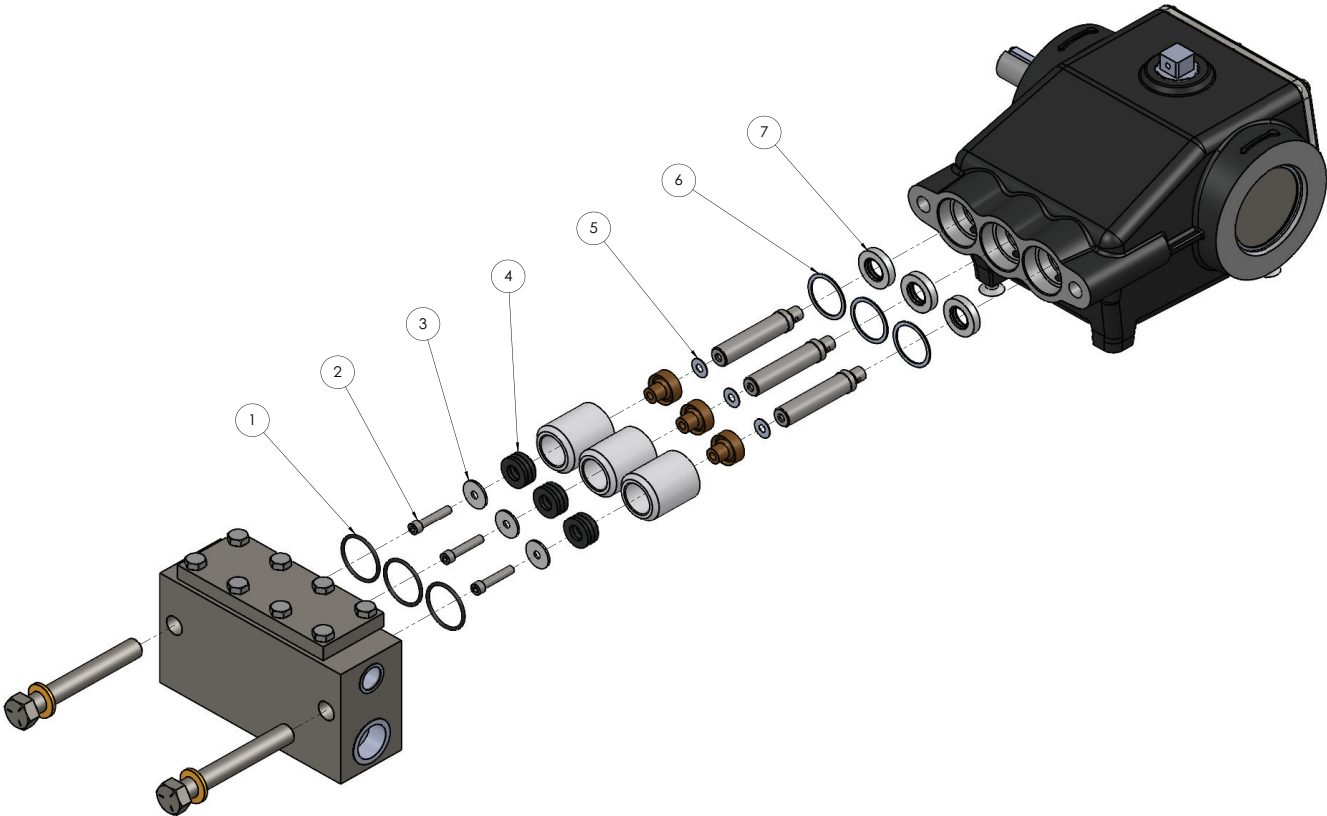
TABLE OF CONTENTS

SERIES	DESCRIPTION	PAGE NO.
PISTON PUMPS		
BXM	Packing / Oil Seal / Pony / Wiper Repair Kit (FM1.1)	3
CX	Packing / Oil Seal / Pony / Wiper Repair Kit (FM1.1)	4
C25, C35, C40	Packing / Oil Seal / Pony / Wiper Repair Kit (FM1.1)	5
D35/50/60/65, E54/70/80/110	Packing / Oil Seal / Pony / Wiper Repair Kit (FM1.1)	6
BXM	Packing Repair Kit (FM1.2)	7
CX	Packing Repair Kit (FM1.2)	8
C25, 35, 40	Packing Repair Kit (FM1.2)	9
D35/50/60/65, E54/70/80/110	Packing Repair Kit (FM1.2)	10
BXM	Valve Repair Kit (FM2)	11
CX	Valve Repair Kit (FM2)	12
C25, C35, C40	Valve Repair Kit (FM2)	13
E54/70/80-20/110	Valve Repair Kit (FM2)	14
E80-25, D65-20	Valve Repair Kit (FM2)	15
D35/50/60/65	Valve Repair Kit (FM2)	16
BXM	Liner Repair Kit (FM3)	17
CX	Liner Repair Kit (FM3)	18
C25/35/40	Liner Repair Kit (FM3)	19
D35/50/60/65, E54/70/80/110	Liner Repair Kit (FM3)	20
PLUNGER PUMPS		
CXP	Packing / Oil Seal / Pony / Wiper Repair Kit (FM1.1)	21
CPM	Packing / Oil Seal / Pony / Wiper Repair Kit (FM1.1)	22
DP	Packing / Oil Seal / Pony / Wiper Repair Kit (FM1.1)	23
CXP	Packing Repair Kit (FM1.2)	24
CPM	Packing Repair Kit (FM1.2)	25
DP	Packing Repair Kit (FM1.2)	26
CXP	Valve Repair Kit (FM2)	27
CPM	Valve Repair Kit (FM2)	27
DP	Valve Repair Kit (FM2)	28
CXP	Plunger Repair Kit (FM3)	29
CPM	Plunger Repair Kit (FM3)	30
CXP	Plunger Repair Kit (FM3)	31
Standard Limited Warranty		32

READY TO ORDER YOUR KIT?
SCAN THIS CODE TO LOCATE
YOUR NEAREST MYERS
AUTHORIZED DISTRIBUTOR



BXM SERIES PACKING / OIL SEAL / PONY / WIPER REPAIR KIT (FM1.1)

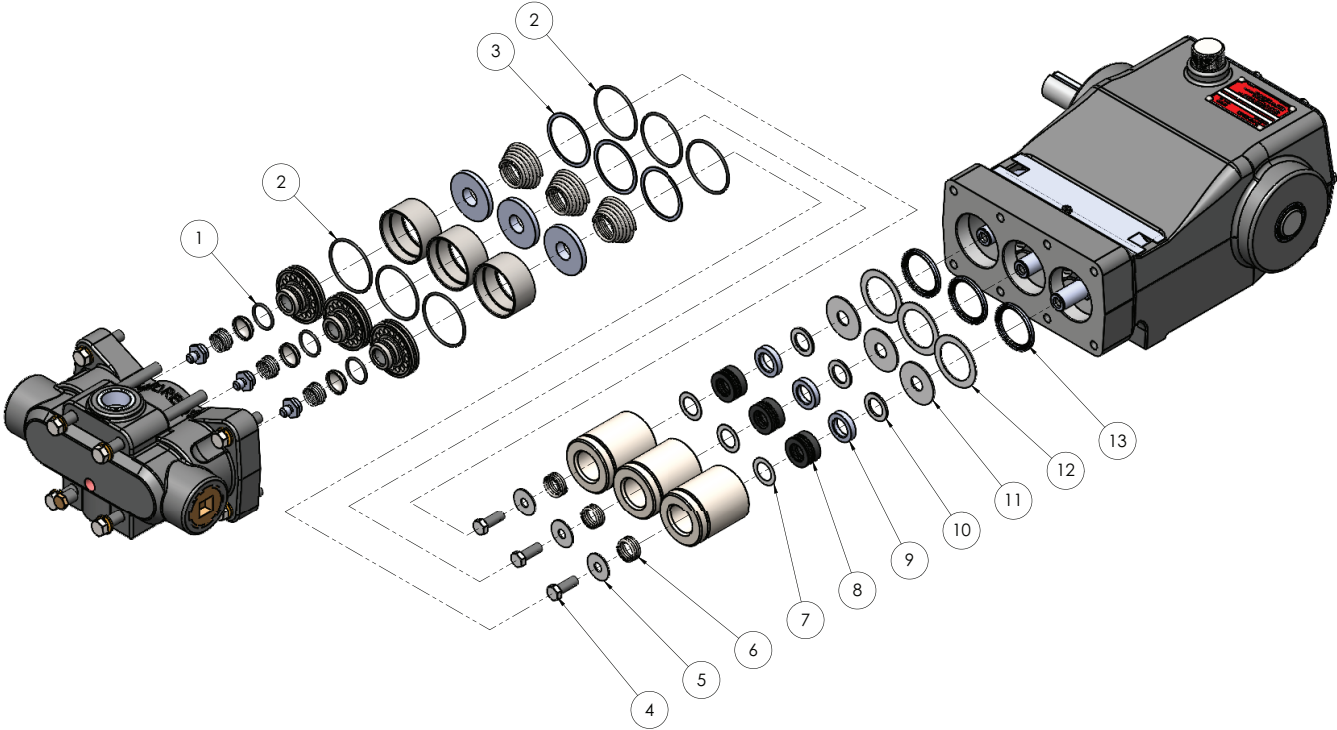


**PARTS INCLUDED IN PACKING / OIL SEAL /
PONY / WIPER KIT**

PART NO.	PART DESCRIPTION	QTY
1	O-Ring	3
2	Allen Bolt	3
3	Washer	3
4	V Packing	3
5	Gasket	3
6	Gasket	3
7	Oil Seal	6

KIT SELECTION TABLE

KIT ORDERING NO.	SERIES
528812707	BXM6-15C
528812717	BXM6-15AB



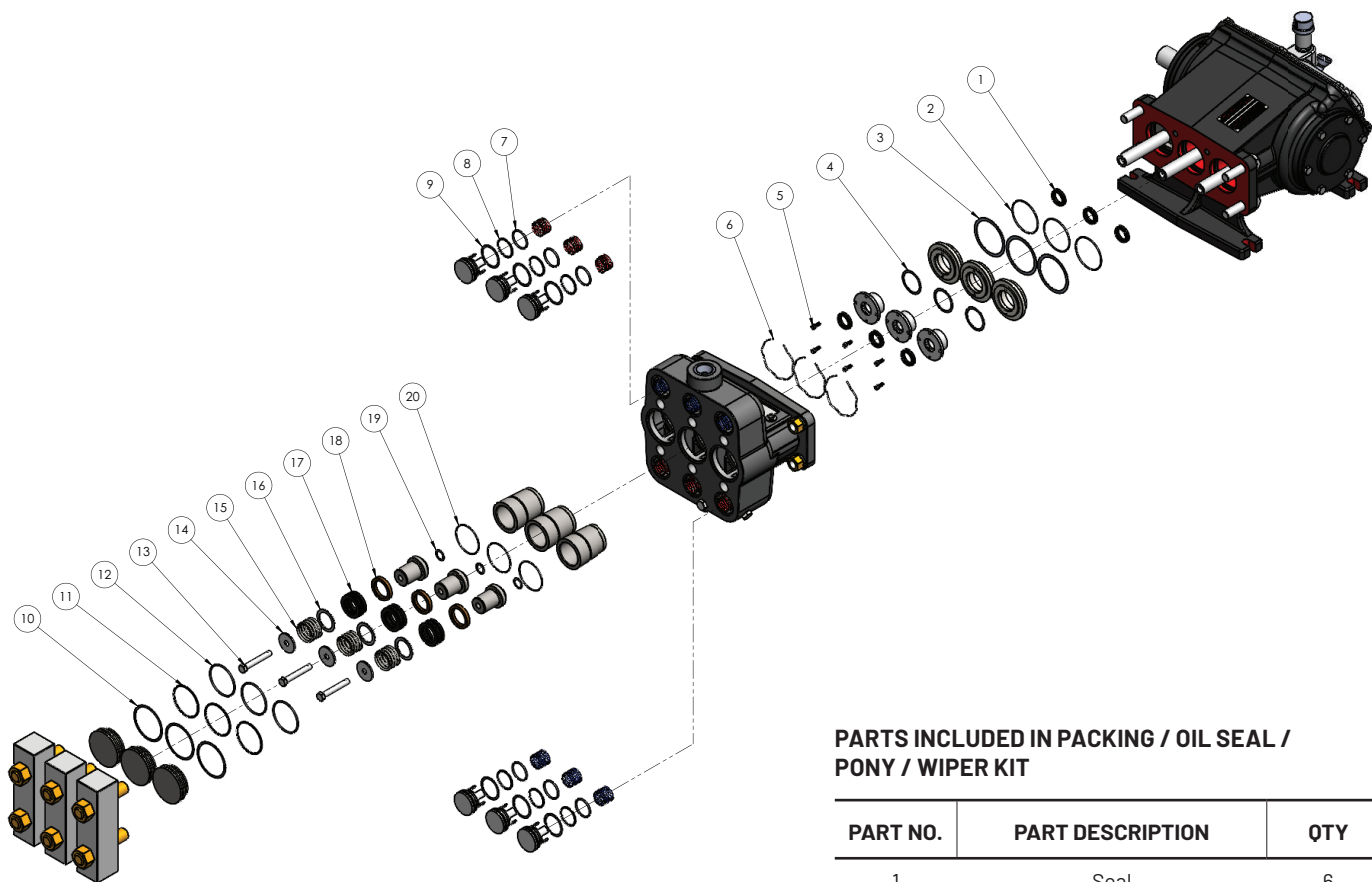
PARTS INCLUDED IN PACKING / OIL SEAL / PONY / WIPER KIT

PART NO.	PART DESCRIPTION	QTY
1	O-Ring	3
2	O-Ring	6
3	Gasket	3
4	Bolt	3
5	Washer	3
6	Spring	3
7	Washer	3
8	V Packing	3
9	Follower	3
10	Washer	3
11	Washer	3
12	Washer	3
13	Seal	3

KIT SELECTION TABLE

KIT ORDERING NO.	SERIES
528812727	CX10-15AV
528812737	CX10-15AVAB
528812747	CX20-10AV
528812757	CX20-10AVAB

C25/35/40 SERIES - PACKING / OIL SEAL / PONY / WIPER REPAIR KIT (FM1.1)



KIT SELECTION TABLE

KIT ORDERING NO.	SERIES
528812767	C25-25DV
528812777	C35-20DV, C35-20B
528812787	C40-20

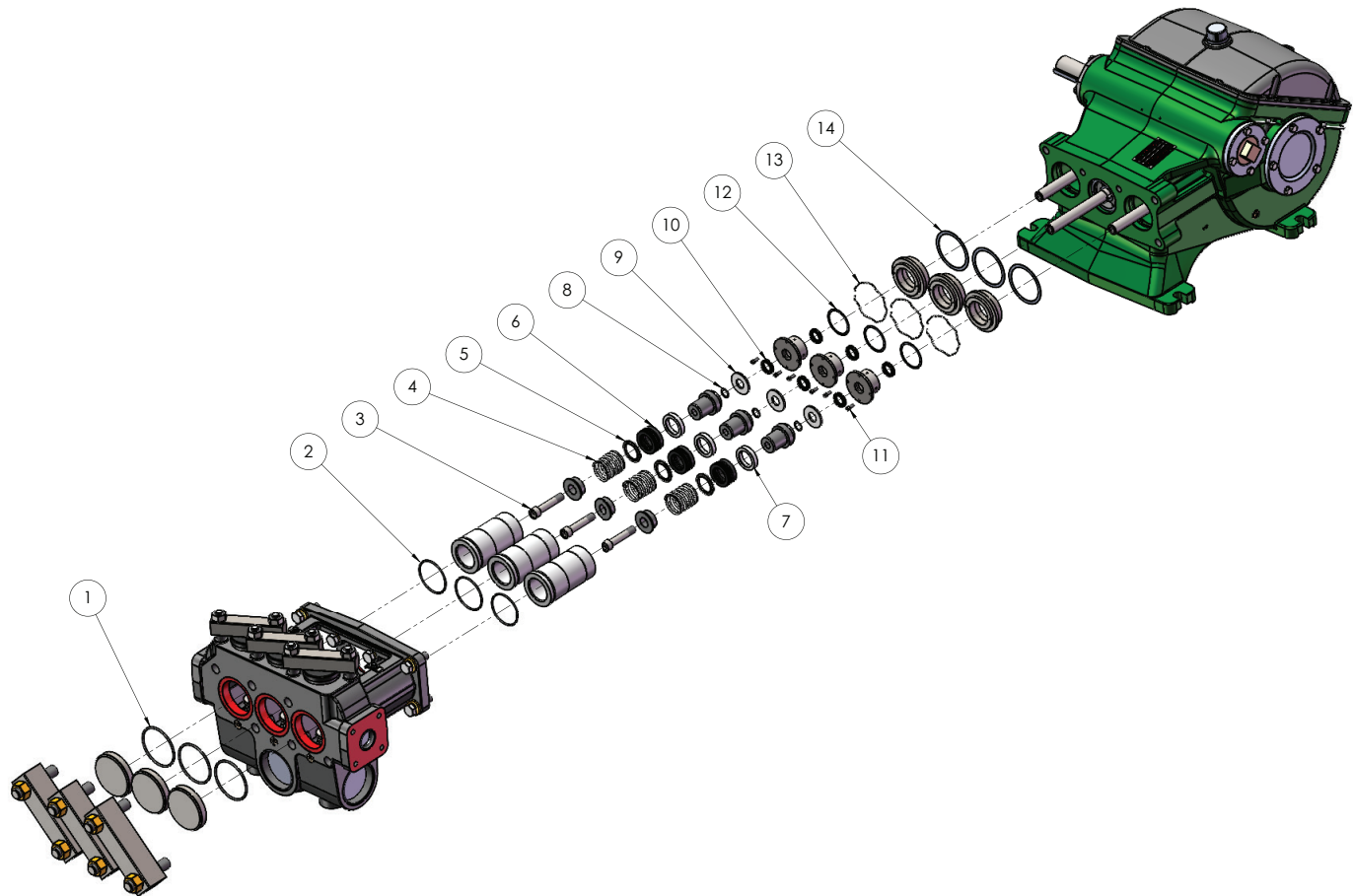
PARTS INCLUDED IN PACKING / OIL SEAL / PONY / WIPER KIT

PART NO.	PART DESCRIPTION	QTY
1	Seal	6
2	O-Ring	3
3	Gasket	3
4	Gasket	3
5	Screw Cap	6
6	Spring, Retainer	3
7	O-Ring	6
8	Backup Ring	6
9	Gasket	6
10	Gasket	3
11	Backup Ring	3
12	O-Ring	3
13	Screw Cap	3
14	Washer*	3
15	Spring	3
16	Washer	3
17	Packing	3
18	Follower	3
19	Washer (Copper)	3
20	O-Ring*	3

NOTES

1. *ITEM #14 WASHER & ITEM #20 O-RING NOT PRESENT IN C40 SERIES PUMP.

D35/50/60/65, E54/70/80/110 SERIES - PACKING / OIL SEAL / PONY / WIPER REPAIR KIT (FM1.1)



PARTS INCLUDED IN PACKING / OIL SEAL / PONY / WIPER KIT

PART NO.	PART DESCRIPTION	QTY
1	O-Ring / Seal	3
2	O-Ring	3
3	Allen Bolt	3
4	Spring*	3
5	Ring, Pressure*	3
6	V Packing / Cup	3
7	Follower*	3
8	Washer / O-Ring	3
9	Gasket / Slinger	3
10	U Cup Seal	6
11	Allen Bolt	6
12	Gasket	3
13	Retainer Seal Spring	3
14	Gasket	3

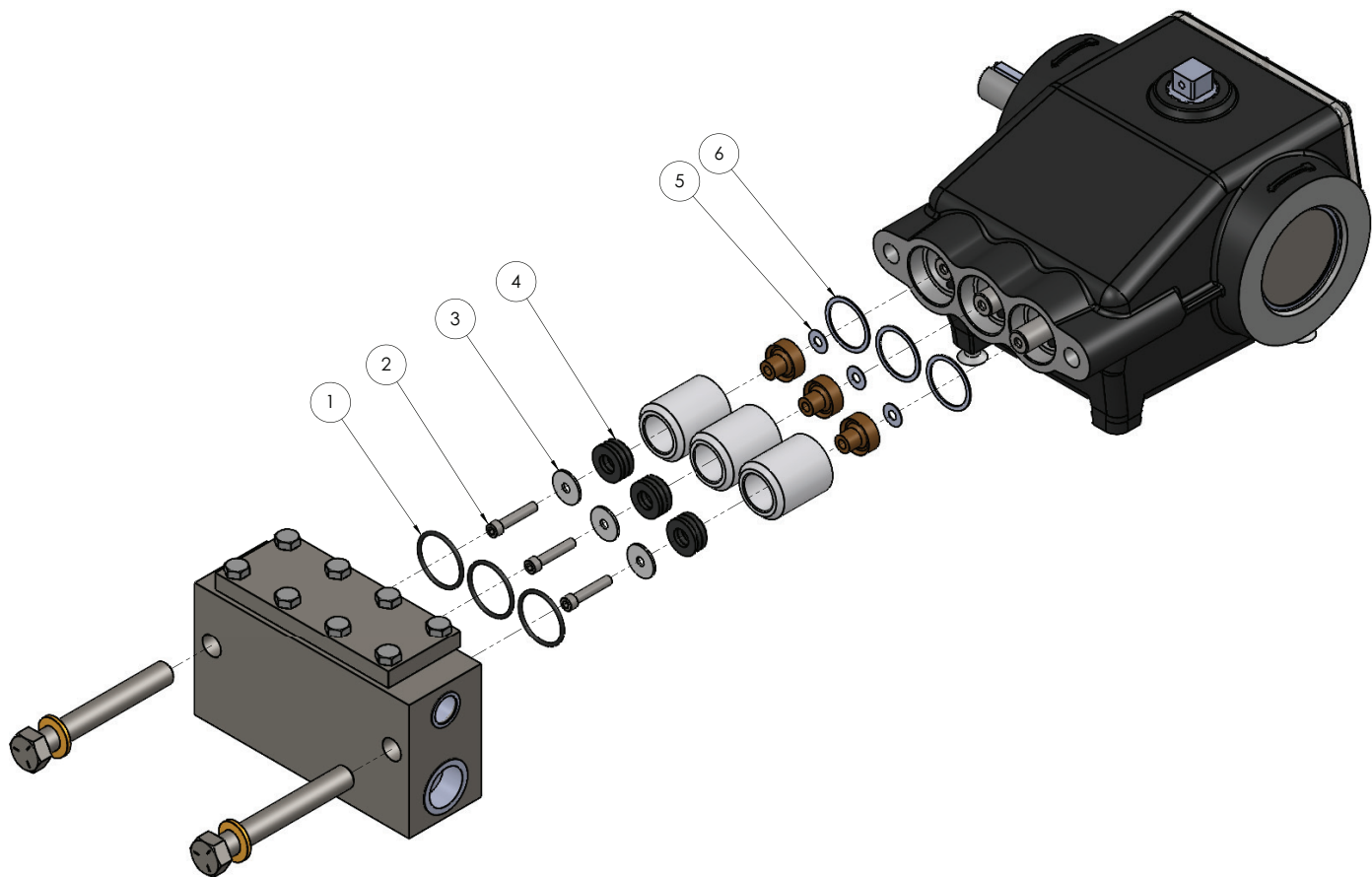
KIT SELECTION TABLE

KIT ORDERING NO.	SERIES
528812797	D35-12AVD-2H
528812807	D50-12D-3H
528812817	D60-10D-3H
528812827	D65-16AVD
528812837	D65-20, D65-20-H/D, D65-20AB
528812847	E54-30, E54-30-H/D
528812857	E70-23, E70-23-H/D
528812867	E80-20V, E80-20V-H/D
528812877	E80-25, E80-25L, E80-25-H/D
528812887	E110-14, E110-14-H/D

NOTES

1. *ITEMS #4, #5, #7 MAY NOT BE PRESENT IN SOME ASSEMBLIES.

BXM SERIES - PACKING REPAIR KIT (FM1.2)



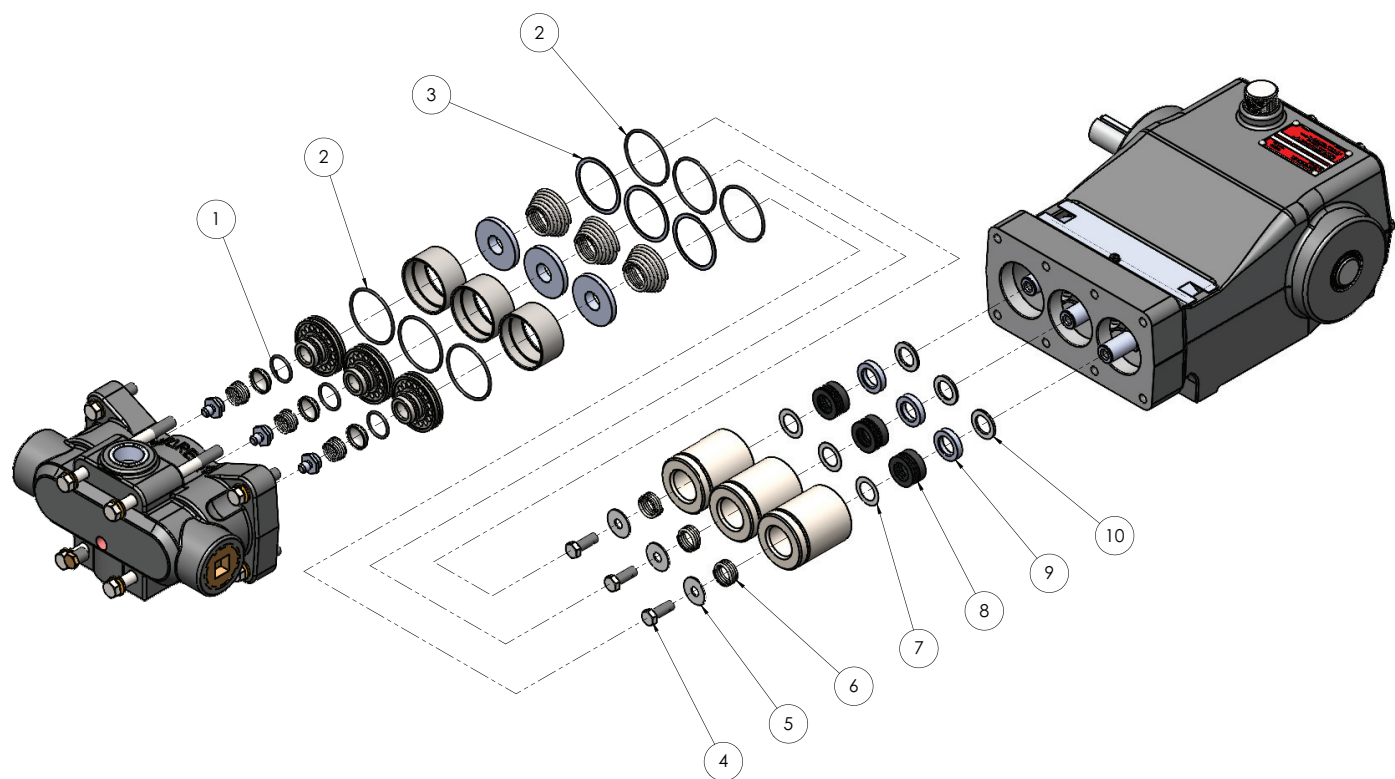
PARTS INCLUDED IN PACKING REPAIR KIT

PART NO.	PART DESCRIPTION	QTY
1	O-Ring	3
2	Allen Bolt	3
3	Washer	3
4	V Packing	3
5	Gasket	3
6	Gasket	3

KIT SELECTION TABLE

KIT ORDERING NO.	SERIES
528812897	BXM6-15C
528812907	BXM6-15AB

CX SERIES - PACKING REPAIR KIT (FM1.2)



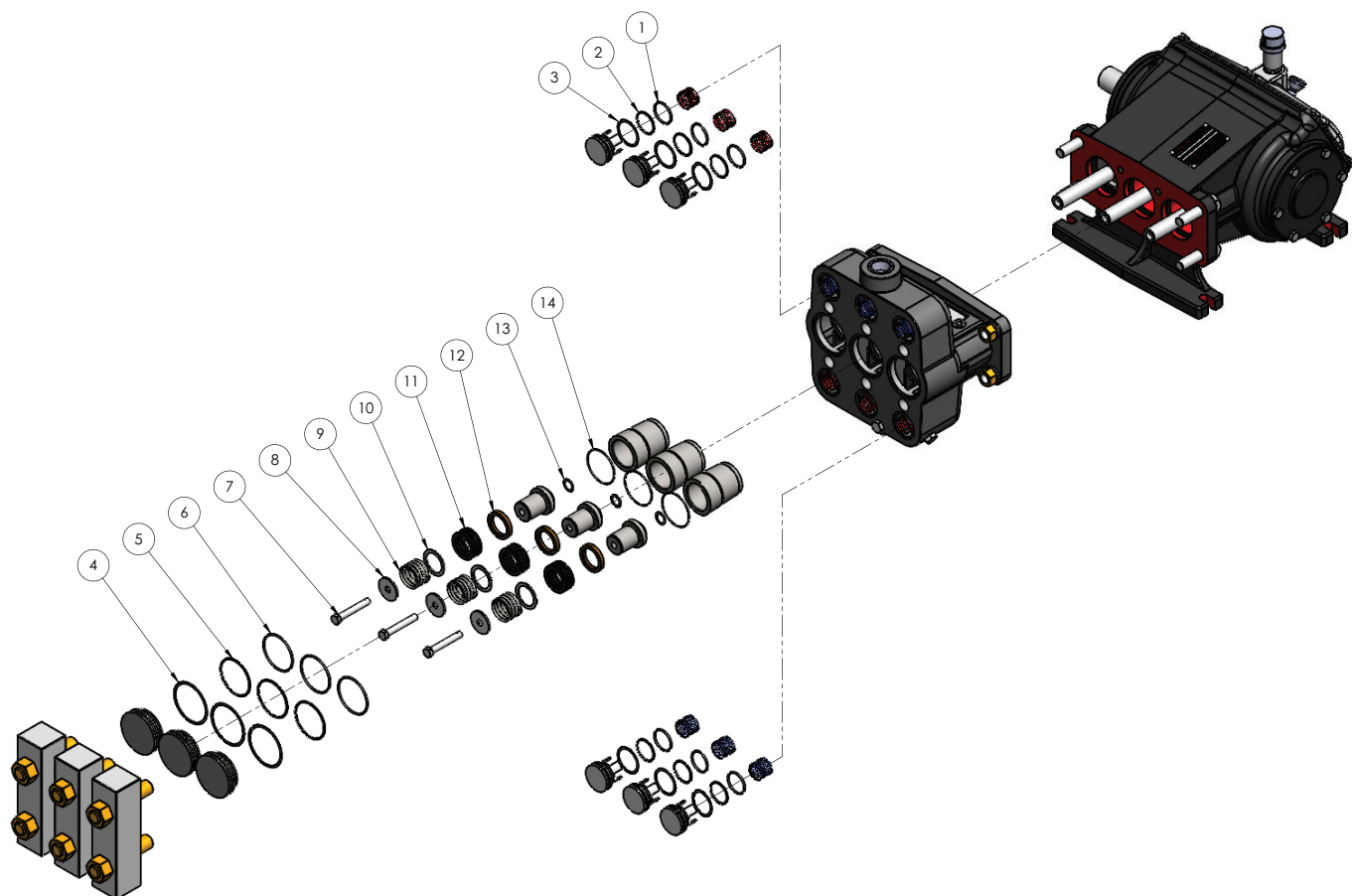
PARTS INCLUDED IN PACKING REPAIR KIT

PART NO.	PART DESCRIPTION	QTY
1	O-Ring	3
2	O-Ring	6
3	Gasket	3
4	Bolt	3
5	Washer	3
6	Spring	3
7	Washer	3
8	V Packing	3
9	Follower	3
10	Washer	3

KIT SELECTION TABLE

KIT ORDERING NO.	SERIES
528812917	CX10-15AV
528812927	CX10-15AVAB
528812937	CX20-10AV
528812947	CX20-10AVAB

C25/35/40 SERIES - PACKING REPAIR KIT (FM1.2)



PARTS INCLUDED IN PACKING REPAIR KIT

PART NO.	PART DESCRIPTION	QTY
1	O-Ring	6
2	Backup Ring	6
3	Gasket	6
4	Gasket	3
5	Backup Ring	3
6	O-Ring	3
7	Screw Cap	3
8	Washer*	3
9	Spring	3
10	Washer	3
11	Packing	3
12	Follower	3
13	Washer (Copper)	3
14	O-Ring*	3

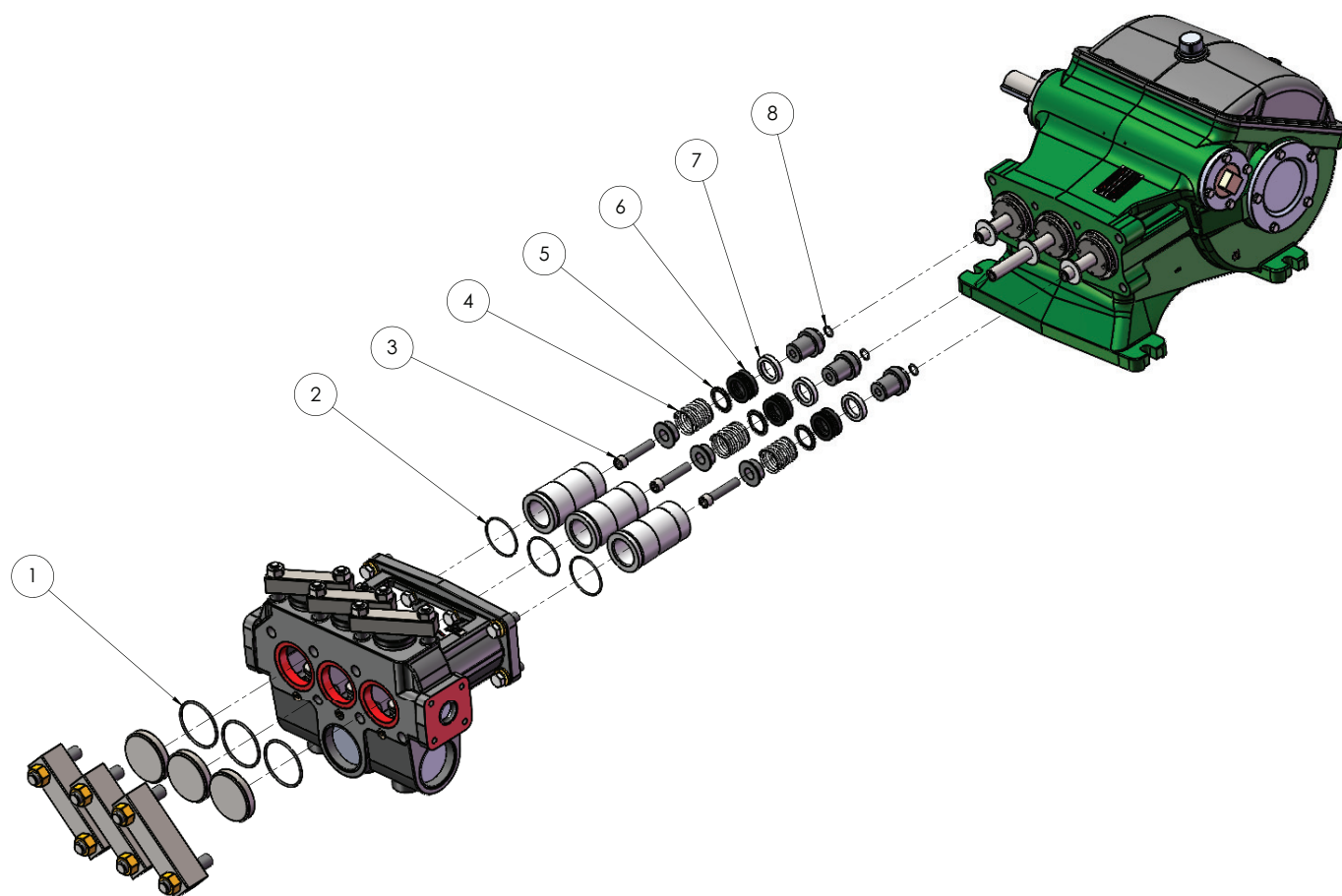
KIT SELECTION TABLE

KIT ORDERING NO.	SERIES
528812957	C25-25DV
528812967	C35-20DV, C35-20B
528812977	C40-20

NOTES

1. *ITEMS #8, #14 NOT PRESENT IN C40 SERIES PUMP.

D35/50/60/65, E54/70/80/110 SERIES - PACKING REPAIR KIT (FM1.2)



PARTS INCLUDED IN PACKING REPAIR KIT

PART NO.	PART DESCRIPTION	QTY
1	O-Ring / Seal	3
2	O-Ring	3
3	Allen Bolt	3
4	Spring*	3
5	Ring, Pressure*	3
6	V Packing / Cup	3
7	Follower*	3
8	Washer / O-Ring	3

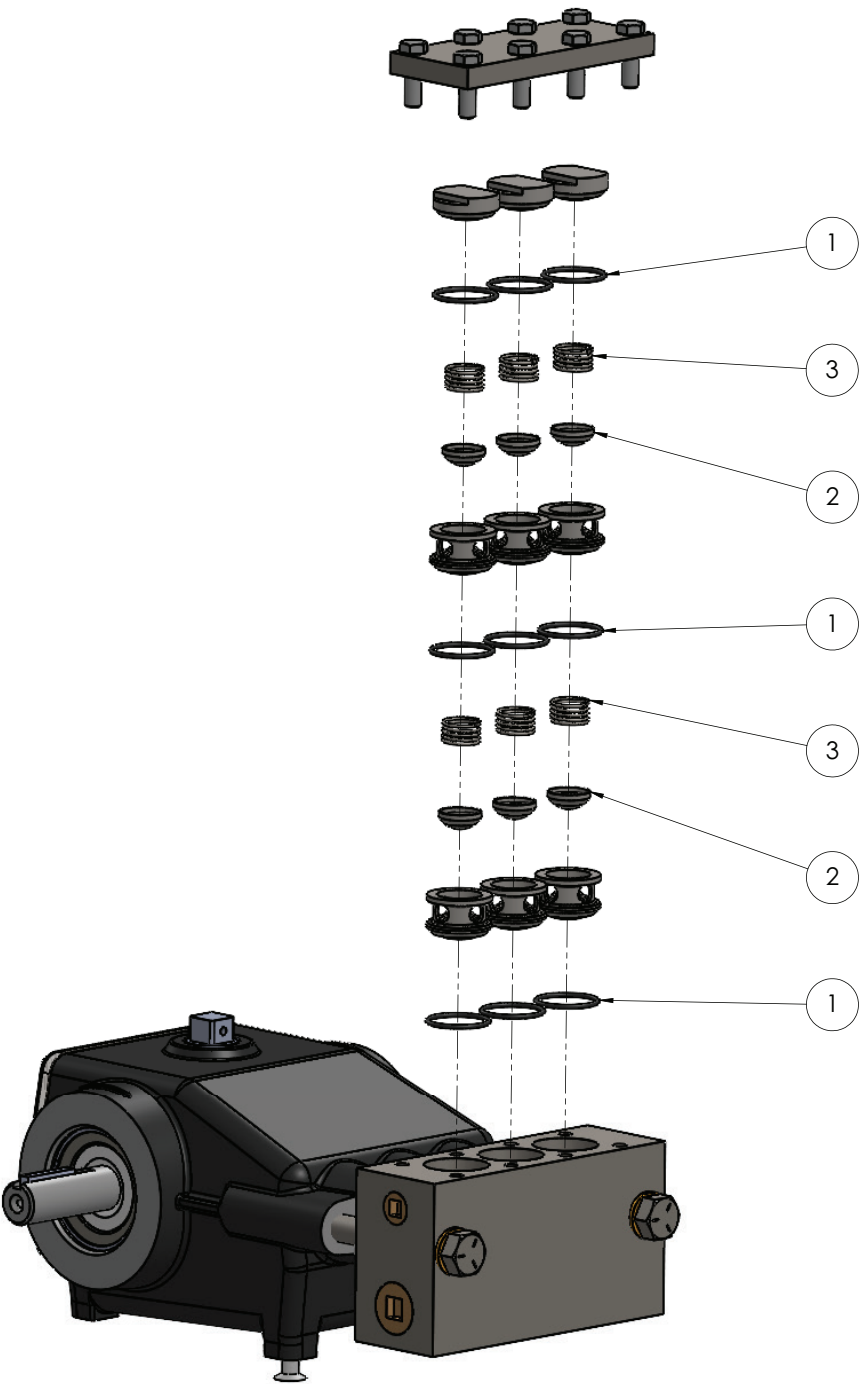
KIT SELECTION TABLE

KIT ORDERING NO.	SERIES
528812987	D35-12AVD-2H
528812997	D50-12D-3H
528813007	D60-10D-3H
528813017	D65-16AVD
528813027	D65-20, D65-20-H/D, D65-20AB
528813037	E54-30, E54-30-H/D
528813047	E70-23, E73-23-H/D
528813057	E80-20V, E80-20V-H/D
528813067	E80-25, E80-25L, E80-25-H/D
528813077	E110-14, E110-14-H/D

NOTES

1. *ITEMS #4, #5, #7 MAY NOT BE PRESENT IN SOME ASSEMBLIES.

BXM SERIES - VALVE REPAIR KIT (FM2)



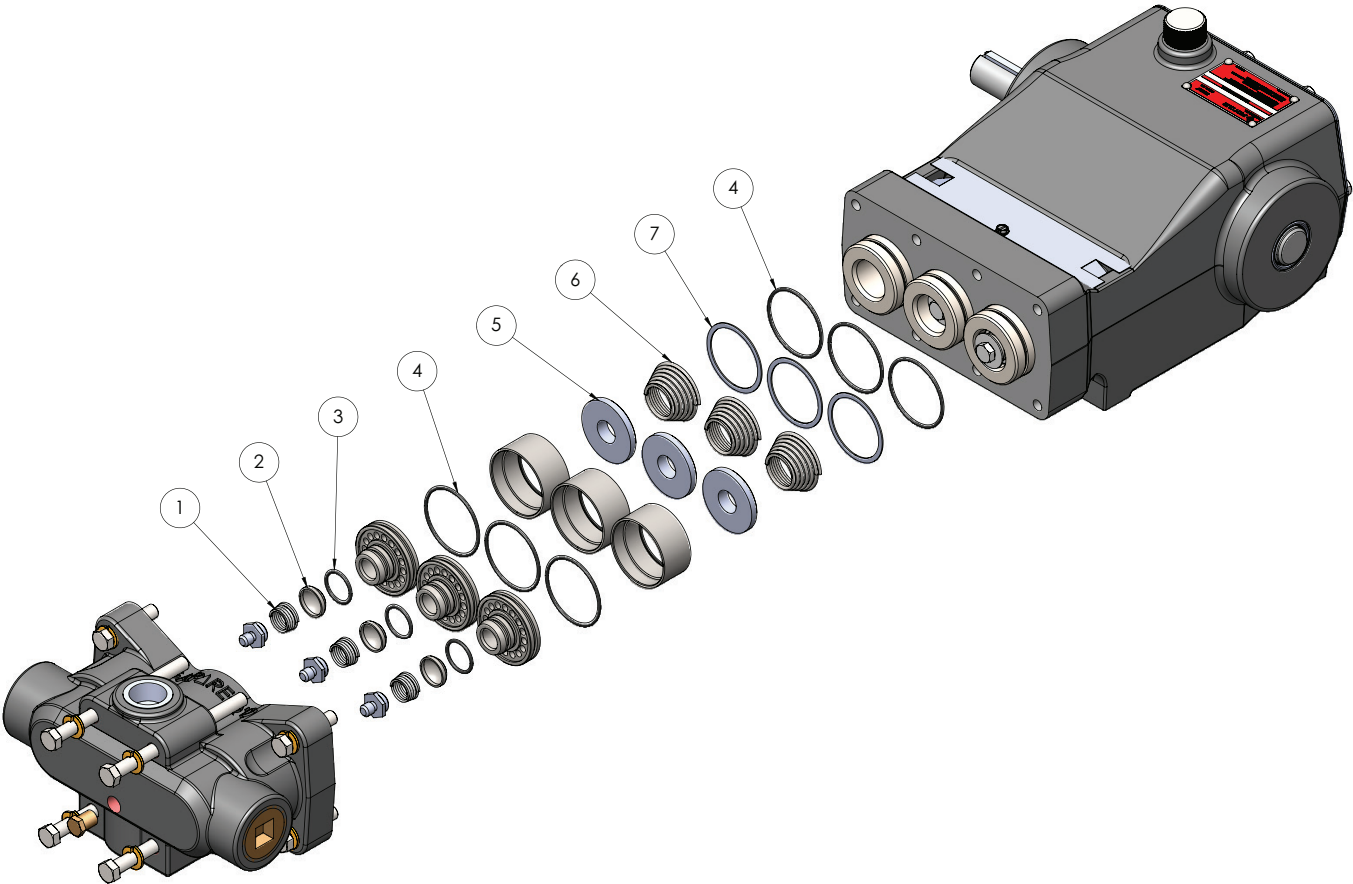
PARTS INCLUDED IN VALVE REPAIR KIT

PART NO.	PART DESCRIPTION	QTY
1	O-Ring	9
2	Valve	6
3	Spring	6

KIT SELECTION TABLE

KIT ORDERING NO.	SERIES
528812387	BXM6-15C
528812397	BXM6-15AB

CX SERIES - VALVE REPAIR KIT (FM2)



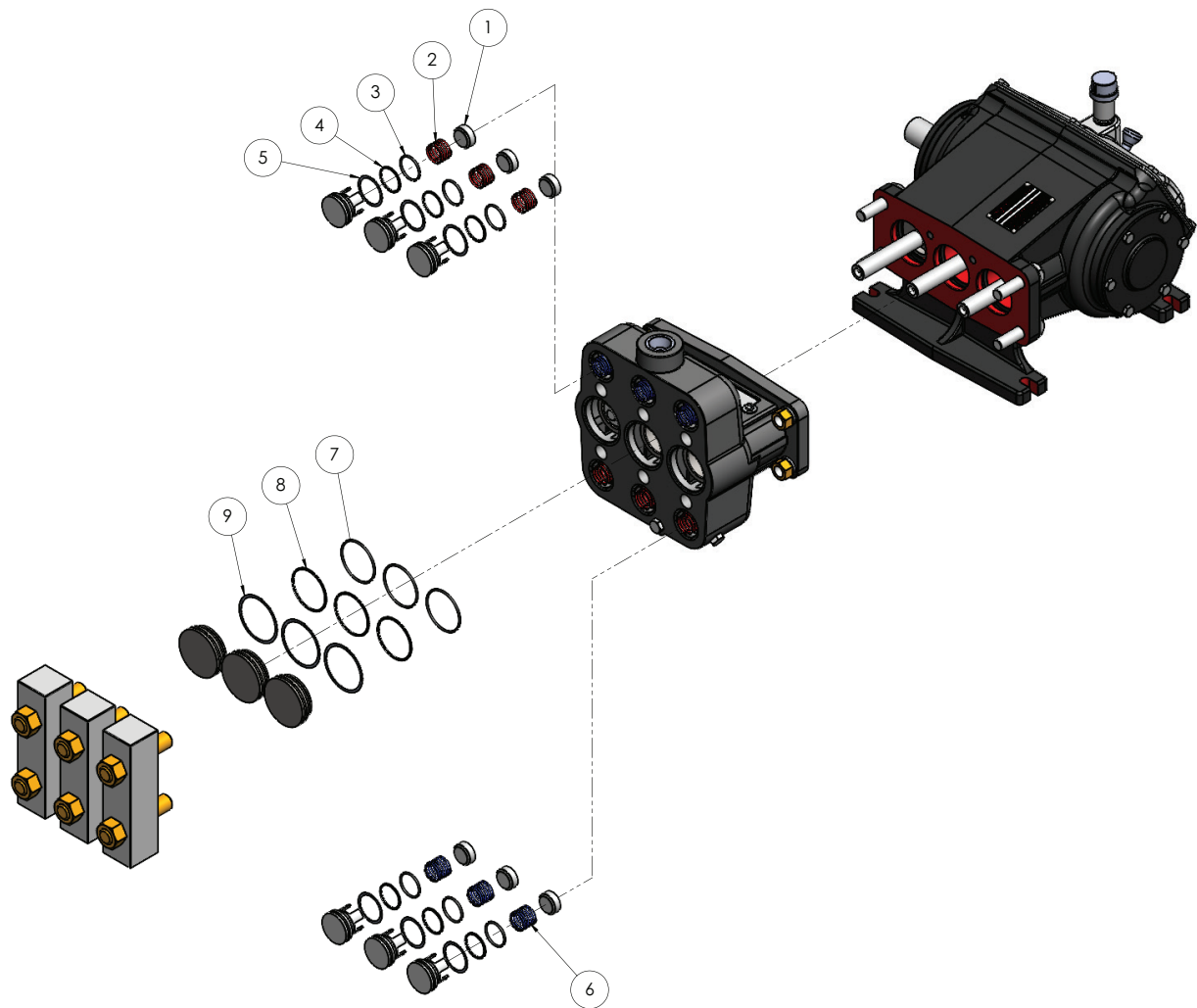
PARTS INCLUDED IN VALVE REPAIR KIT

PART NO.	PART DESCRIPTION	QTY
1	Spring	3
2	Valve	3
3	O-Ring	3
4	O-Ring	6
5	Valve, Suction	3
6	Spring	3
7	Gasket	3

KIT SELECTION TABLE

KIT ORDERING NO.	SERIES
528812407	CX10-15AV, CX20-10AV
528812417	CX10-15AVAB, CX20-10AVAB

C25/35/40 SERIES - VALVE REPAIR KIT (FM2)



PARTS INCLUDED IN VALVE REPAIR KIT

PART NO.	PART DESCRIPTION	QTY
1	Valve	6
2	Spring	3
3	O-Ring	6
4	Backup Ring	6
5	Gasket	6
6	Spring	3
7	O-Ring	3
8	Backup Ring	3
9	Gasket	3

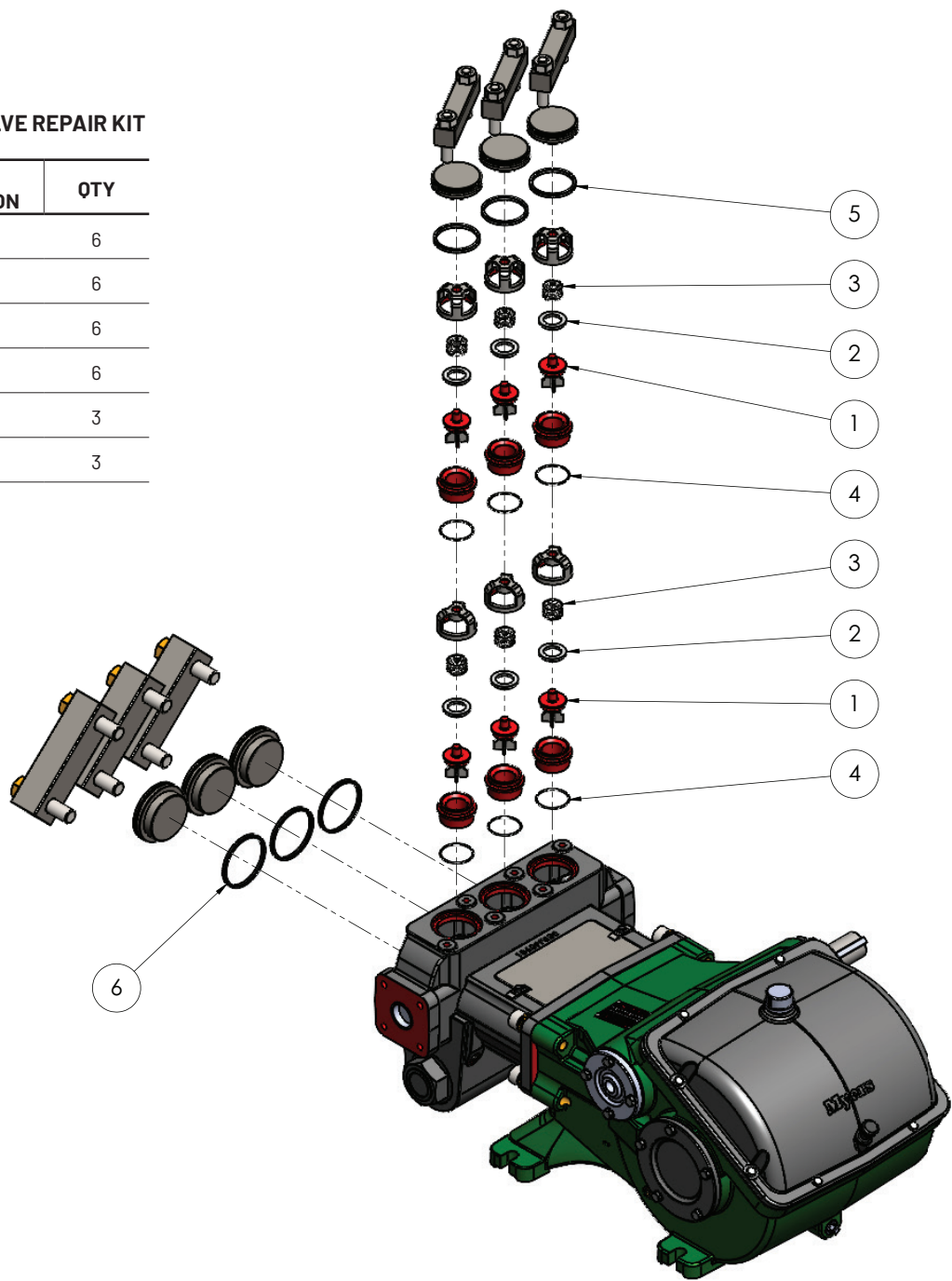
KIT SELECTION TABLE

KIT ORDERING NO.	SERIES
528812427	C25-25DV, C35-20DV, C40-20
528812437	C35-20B

E54/70/80-20/110 SERIES - VALVE REPAIR KIT (FM2)

PARTS INCLUDED IN VALVE REPAIR KIT

PART NO.	PART DESCRIPTION	QTY
1	Valve	6
2	Insert	6
3	Spring	6
4	O-Ring	6
5	Seal	3
6	Seal	3



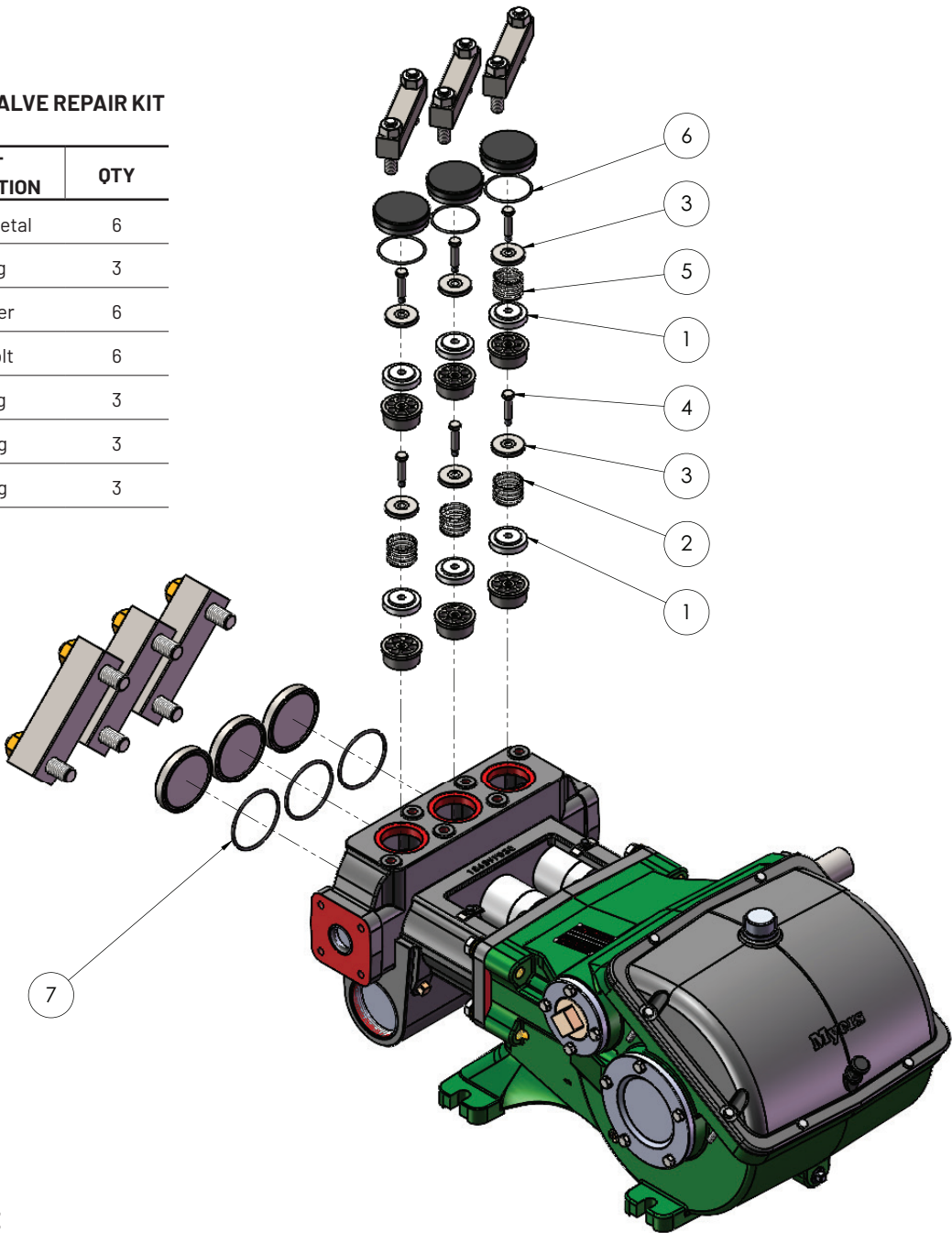
KIT SELECTION TABLE

KIT ORDERING NO.	SERIES
528812447	E54-30, E54-30-H/D, E70-23, E70-23-H/D, E80-20V, E80-20V-H/D, E110-14, E110-14-H/D

E80-25, D65-20 SERIES - VALVE REPAIR KIT (FM2)

PARTS INCLUDED IN VALVE REPAIR KIT

PART NO.	PART DESCRIPTION	QTY
1	Valve, Acetal	6
2	Spring	3
3	Retainer	6
4	Hex Bolt	6
5	Spring	3
6	O-Ring	3
7	O-Ring	3



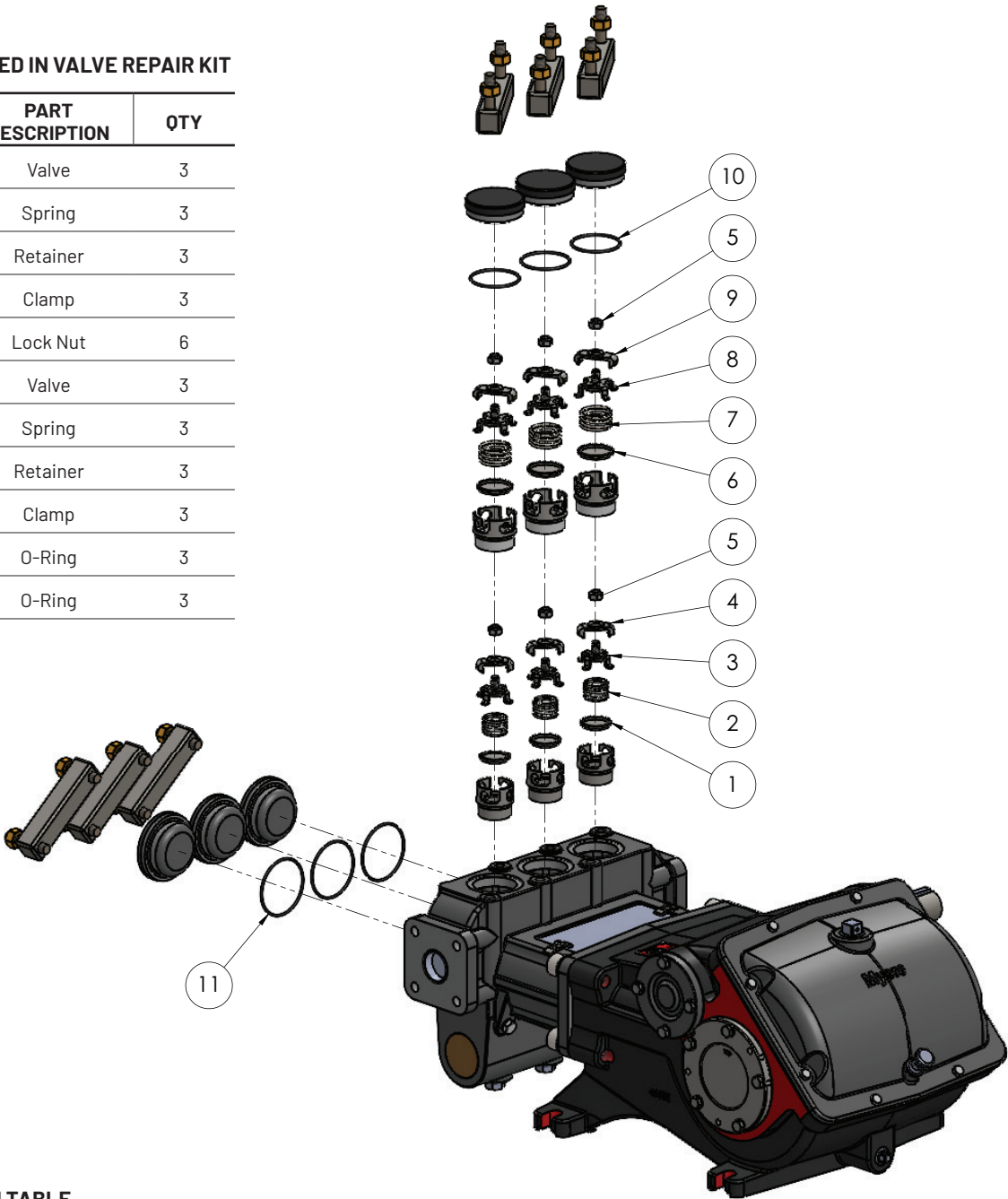
KIT SELECTION TABLE

KIT ORDERING NO.	SERIES
528812457	E80-25, E80-25L, E80-25-H/D
528812467	D65-20AB
528812477	D65-20, D65-20-H/D

D35/50/60, D65-16 SERIES - VALVE REPAIR KIT (FM2)

PARTS INCLUDED IN VALVE REPAIR KIT

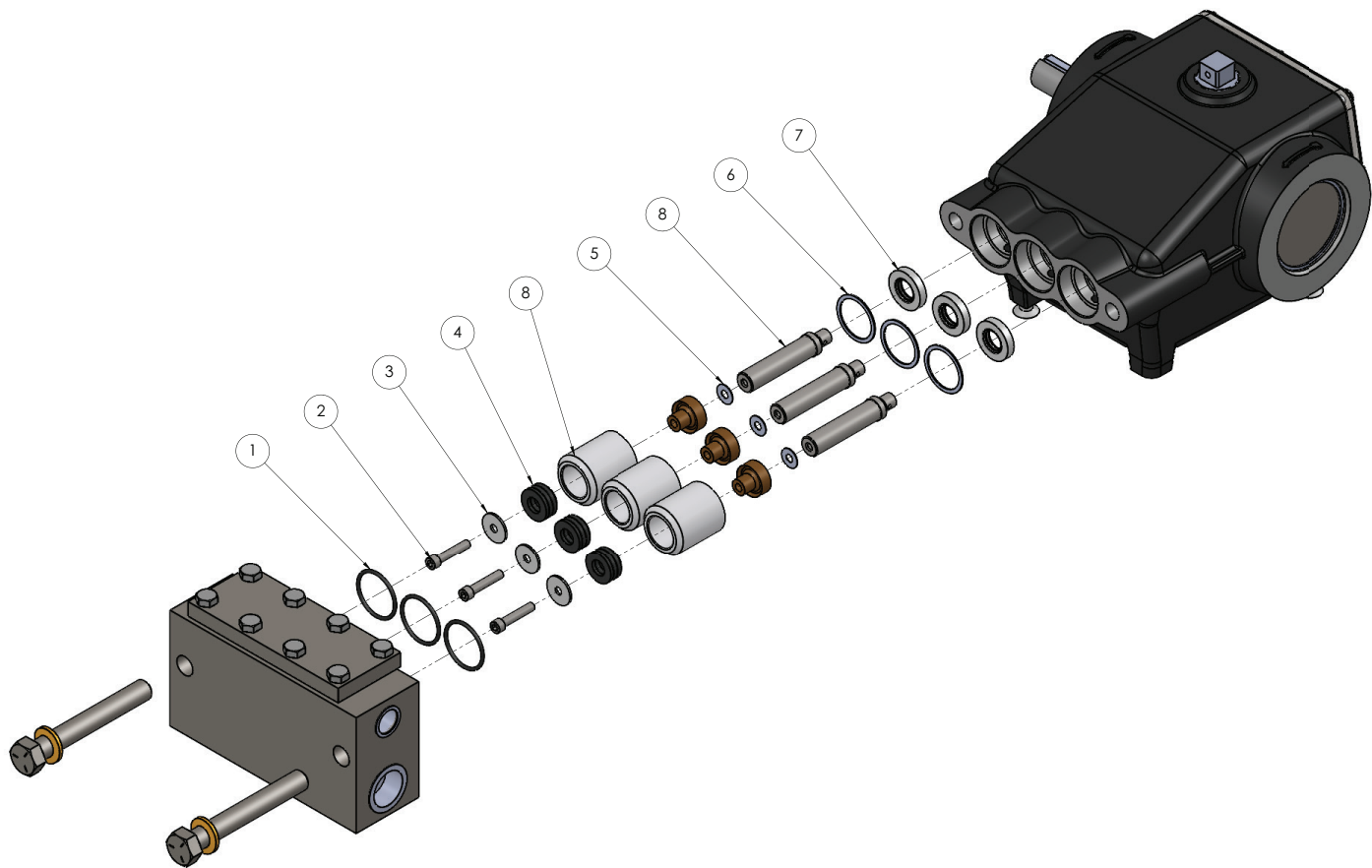
PART NO.	PART DESCRIPTION	QTY
1	Valve	3
2	Spring	3
3	Retainer	3
4	Clamp	3
5	Lock Nut	6
6	Valve	3
7	Spring	3
8	Retainer	3
9	Clamp	3
10	O-Ring	3
11	O-Ring	3



KIT SELECTION TABLE

KIT ORDERING NO.	SERIES
528812487	D65-16AVD
528812497	D50-12D-3H, D60-10D-3H
528812507	D35-12AVD-2H

BXM SERIES - LINER REPAIR KIT (FM3)



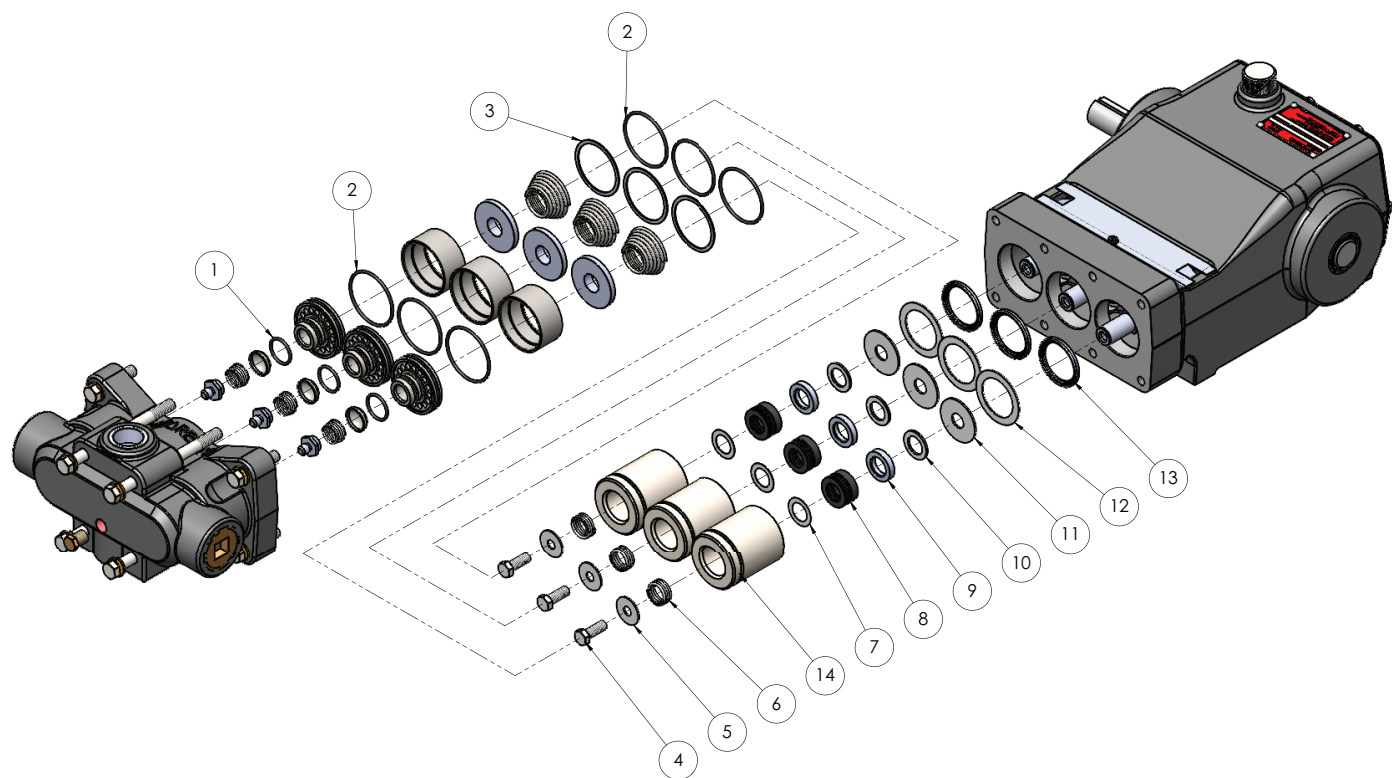
PARTS INCLUDED IN VALVE REPAIR KIT

PART NO.	PART DESCRIPTION	QTY
1	O-Ring	3
2	Allen Bolt	3
3	Washer	3
4	V Packing	3
5	Gasket	3
6	Gasket	3
7	Oil Seal	6
8	Liner	3

KIT SELECTION TABLE

KIT ORDERING NO.	SERIES
528812517	BXM6-15C
528812527	BXM6-15AB

CX SERIES - LINER REPAIR KIT (FM3)



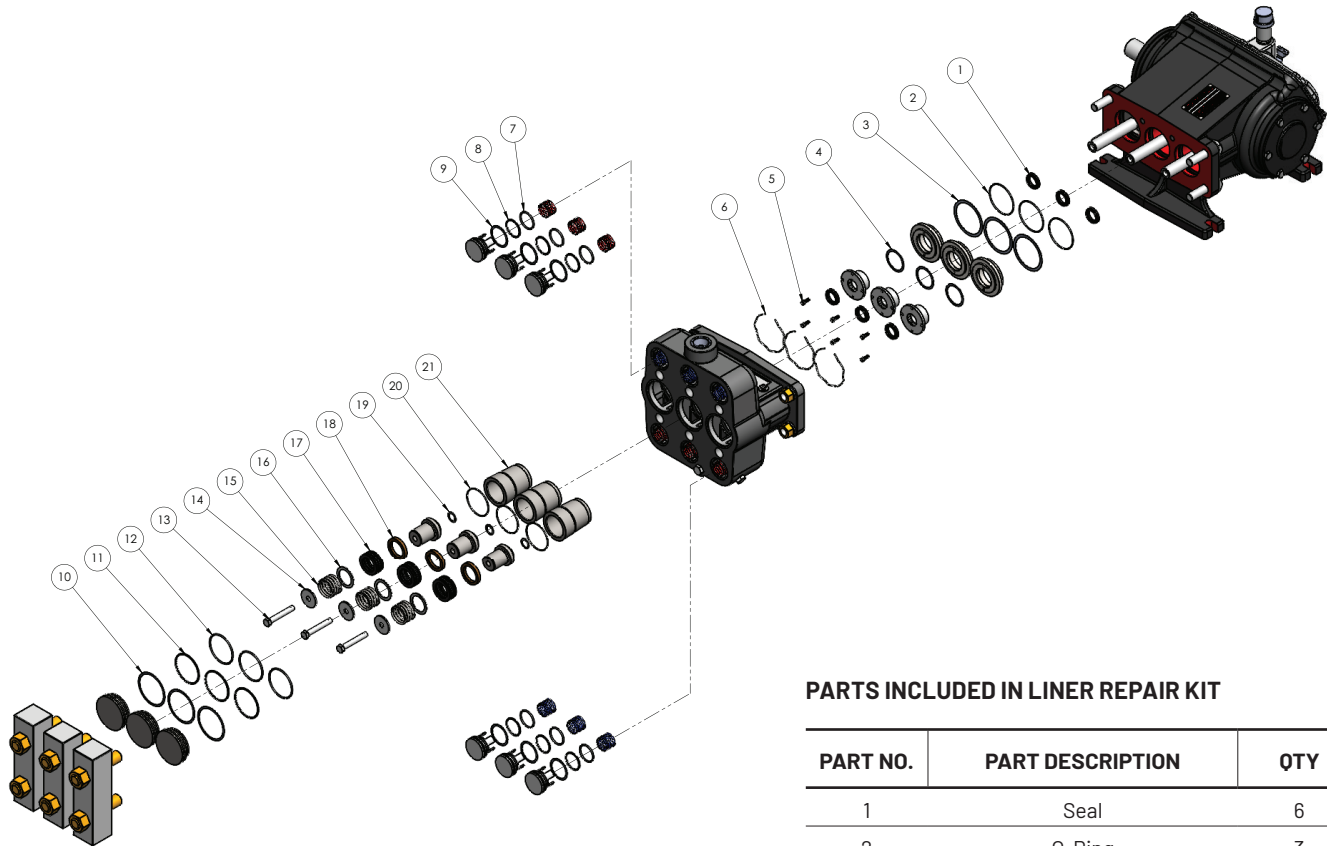
PARTS INCLUDED IN VALVE REPAIR KIT

PART NO.	PART DESCRIPTION	QTY
1	O-Ring	3
2	O-Ring	6
3	Gasket	3
4	Bolt	3
5	Washer	3
6	Spring	3
7	Washer	3
8	V Packing	3
9	Follower	3
10	Washer	3
11	Washer	3
12	Washer	3
13	Seal	3
14	Liner	3

KIT SELECTION TABLE

KIT ORDERING NO.	SERIES
528812537	CX10-15AV
528812547	CX10-15AVAB
528812557	CX20-10AV
528812567	CX20-10AVAB

C25/30/40 SERIES - LINER REPAIR KIT (FM3)



KIT SELECTION TABLE

KIT ORDERING NO.	SERIES
528812577	C25-25DV
528812587	C35-20DV, C35-20B
528812597	C40-20

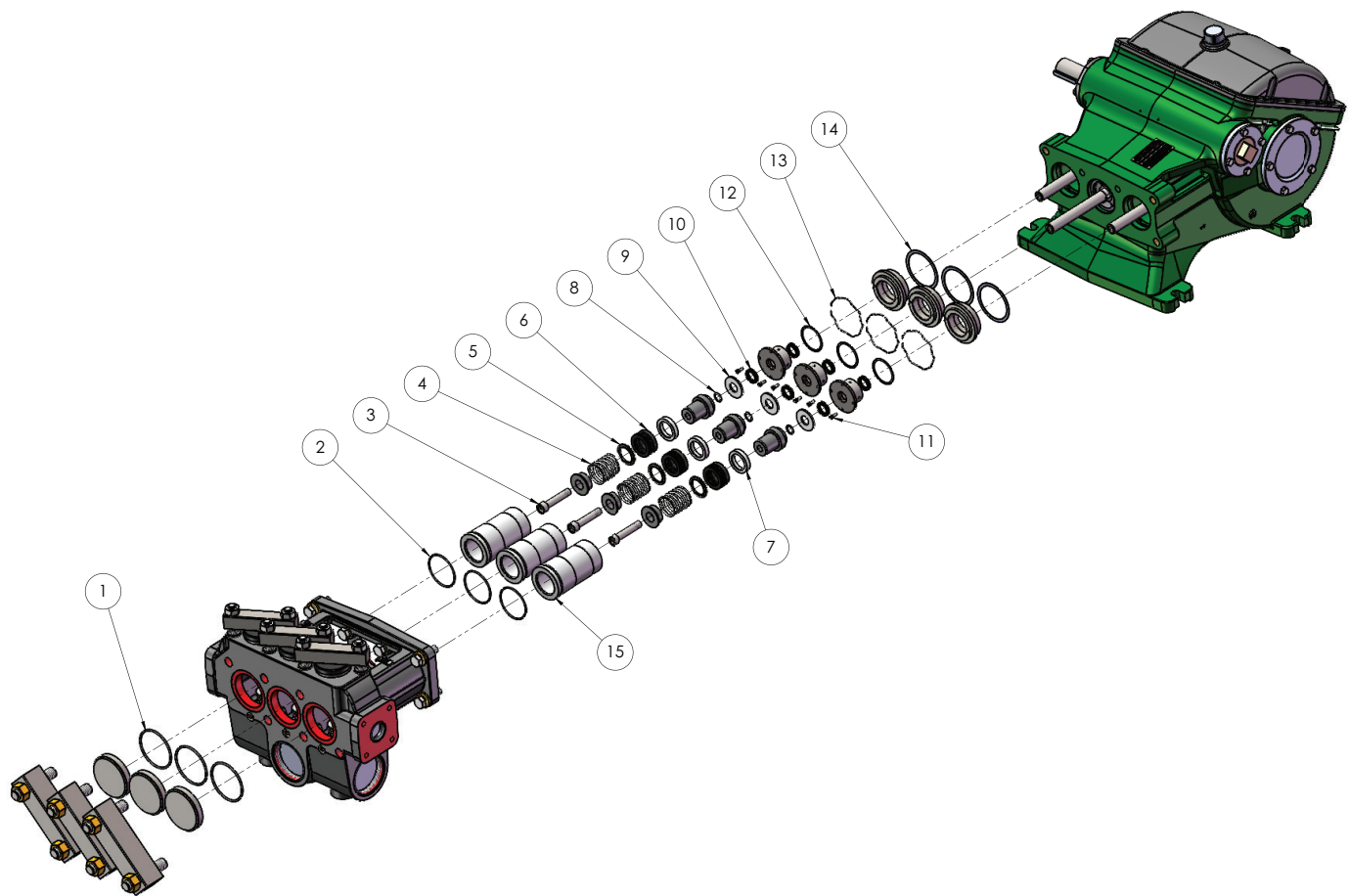
PARTS INCLUDED IN LINER REPAIR KIT

PART NO.	PART DESCRIPTION	QTY
1	Seal	6
2	O-Ring	3
3	Gasket	3
4	Gasket	3
5	Screw Cap	6
6	Spring, Retainer	3
7	O-Ring	6
8	Backup Ring	6
9	Gasket	6
10	Gasket	3
11	Backup Ring	3
12	O-Ring	3
13	Screw Cap	3
14	Washer*	3
15	Spring	3
16	Washer	3
17	Packing	3
18	Follower	3
19	Washer (Copper)	3
20	O-Ring*	3
21	Liner	3

NOTES

1. *ITEMS #14, #20 NOT PRESENT IN C40 SERIES PUMP

D35/50/60/65, E54/70/80/110 SERIES - LINER REPAIR KIT (FM3)



PARTS INCLUDED IN VALVE REPAIR KIT

PART NO.	PART DESCRIPTION	QTY
1	O-Ring / Seal	3
2	O-Ring	3
3	Allen Bolt	3
4	Spring*	3
5	Ring, Pressure*	3
6	V Packing / Cup	3
7	Follower*	3
8	Washer / O-Ring	3
9	Gasket / Slinger	3
10	U Cup Seal	3
11	Allen Bolt	3
12	Gasket	3
13	Retainer Seal Spring	3
14	Gasket	3
15	Liner	3

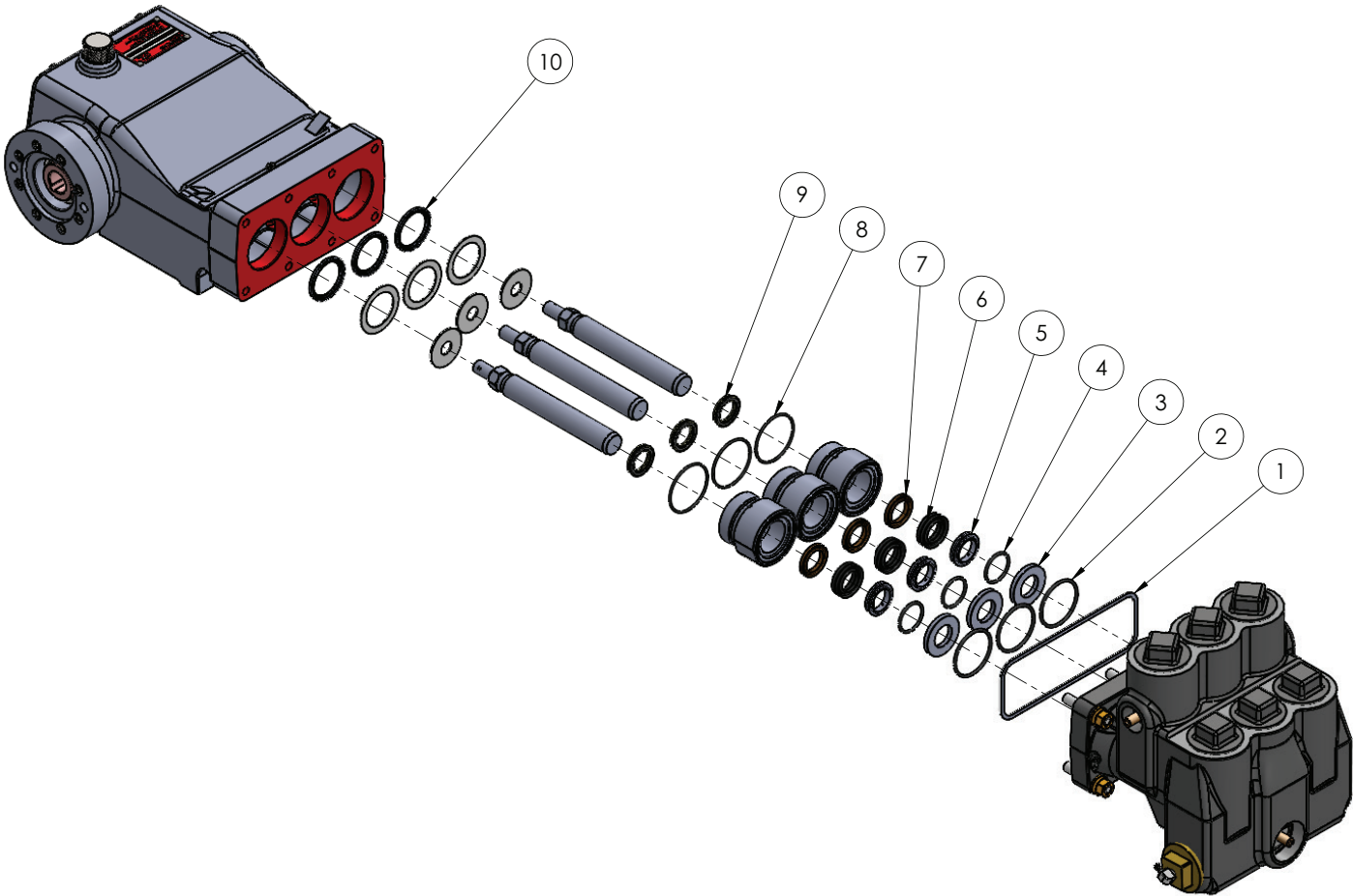
KIT SELECTION TABLE

KIT ORDERING NO.	SERIES
528812607	D35-12AVD-2H
528812617	D50-12D-3H
528812627	D60-10D-3H
528812637	D65-16AVD
528812647	D65-20, D65-20-H/D, D65-20AB
528812657	E54-30, E54-30-H/D
528812667	E70-23, E70-23-H/D
528812677	E80-20V, E80-20V-H/D
528812687	E80-25, E80-25L, E80-25-H/D
528812697	E110-14, E110-14-H/D

NOTES

1. *ITEMS #4, #5, #7 MAY NOT BE PRESENT IN SOME ASSEMBLIES.

CXP SERIES - PACKING / OIL / WIPER / PONY / SEAL REPAIR KIT (FM1.1)



PARTS INCLUDED IN PACKING / OIL / WIPER / PONY / SEAL KIT

PART NO.	PART DESCRIPTION	QTY
1	Gasket, Flange	1
2	O-Ring	3
3	Washer, Seal	3
4	O-Ring	3
5	Male Adapter*	3
6	Seal, High Pressure	3
7	Female Adapter*	3
8	O-Ring*	3
9	Seal, Low Pressure	3
10	Oil Seal	3
11	Allen Bolt	3
12	Gasket	3
13	Retainer Seal Spring	3
14	Gasket	3
15	Liner	3

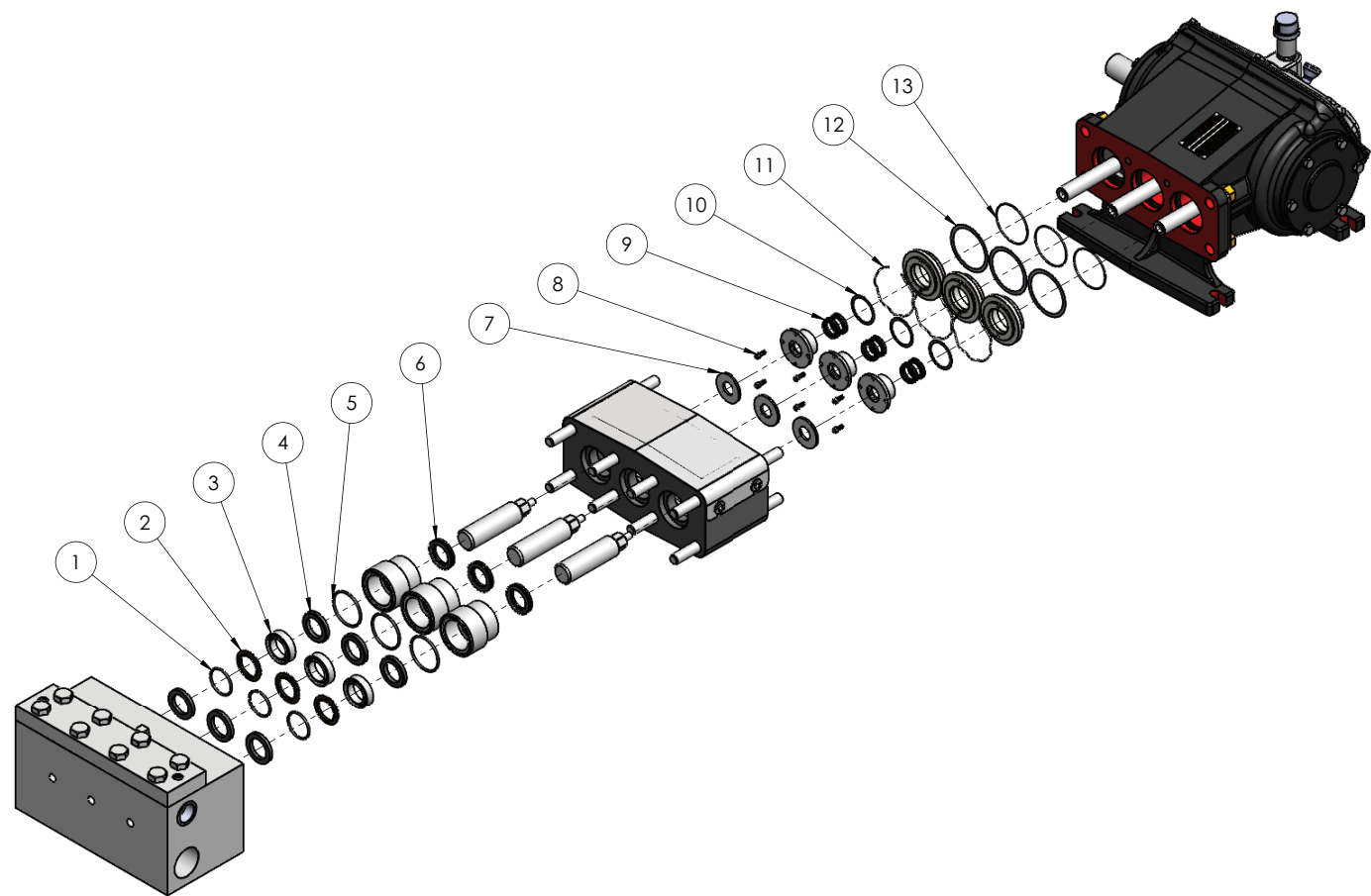
KIT SELECTION TABLE

KIT ORDERING NO.	SERIES
528812067	CXP30-12
528812077	CXP26-14
528812087	CXP22-16
528812097	CXP18-20
528812107	CXP14-24
528812117	CXP7-30
528812127	CXP5-35

NOTES

1. *ITEMS #5, #7, #8 NOT PRESENT IN CXP30-12 & CXP26-14 PUMPS.

CPM SERIES - PACKING / OIL / WIPER / PONY / SEAL REPAIR KIT (FM1.1)



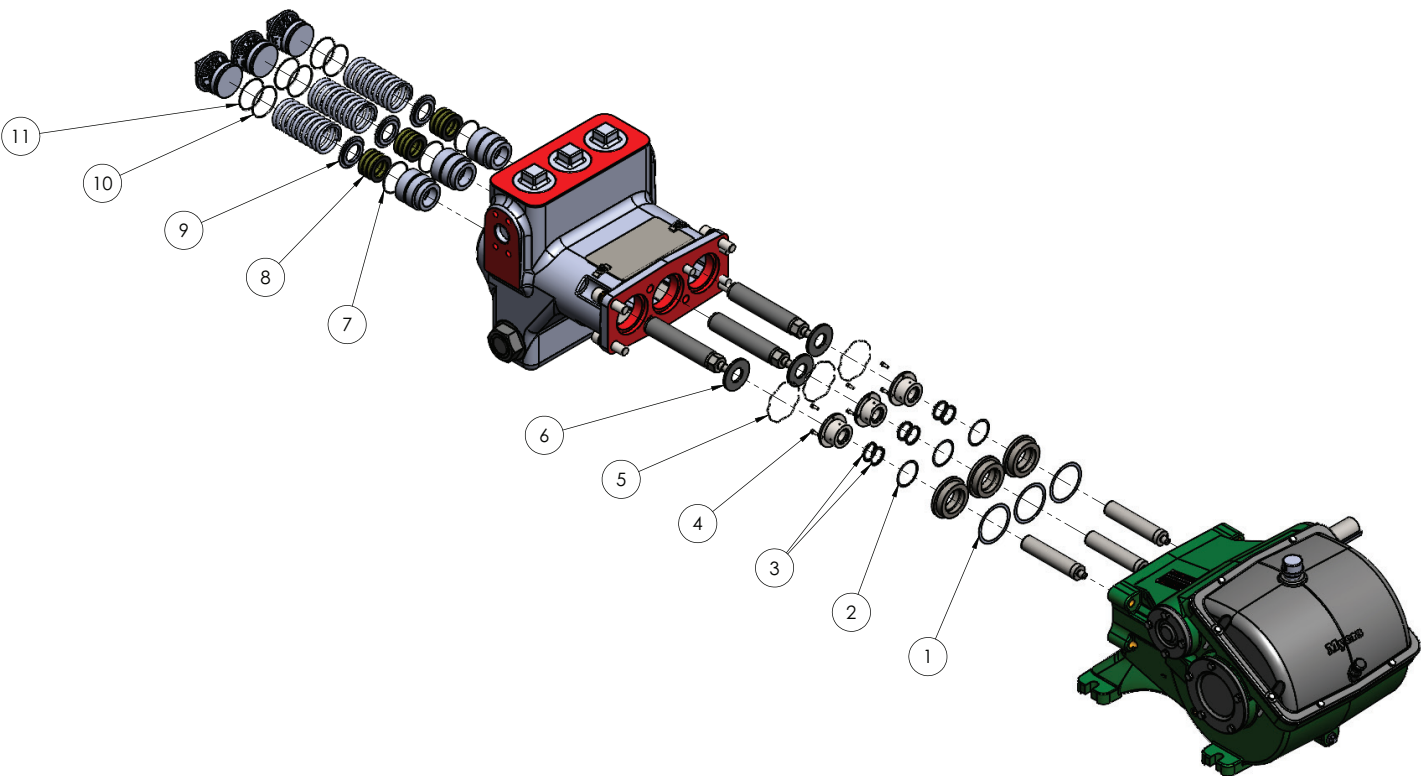
PARTS INCLUDED IN PACKING / OIL / WIPER / PONY / SEAL KIT

PART NO.	PART DESCRIPTION	QTY
1	O-Ring	3
2	Male Adapter	3
3	Packing	3
4	Ring, Bottom Adapter	3
5	O-Ring	3
6	Seal	3
7	Washer Gasket	3
8	Screw, Skt. HD #10 & 1/2	3
9	Cup, U Metric 22	3
10	Gasket	3
11	Spring	3
12	Gasket	3
13	O-Ring	3

KIT SELECTION TABLE

KIT ORDERING NO.	SERIES
528812137	CPM18-40
528812147	CPM24-30

DP SERIES - PACKING / OIL / WIPER / PONY / SEAL REPAIR KIT (FM1.1)



PARTS INCLUDED IN PACKING / OIL / WIPER / PONY / SEAL KIT

PART NO.	PART DESCRIPTION	QTY
1	Gasket, Retainer	3
2	Gasket, Oil Seal Housing	3
3	Oil Seal	6
4	Screw, Allen	6
5	Spring	3
6	Slinger	3
7	O-Ring, Seal Cartridge	3
8	Packing, Plunger	3
9	Washer Spring	3
10	O-Ring	3
11	Backup Ring	3
12	Backup Ring, Seal Cartridge*	3

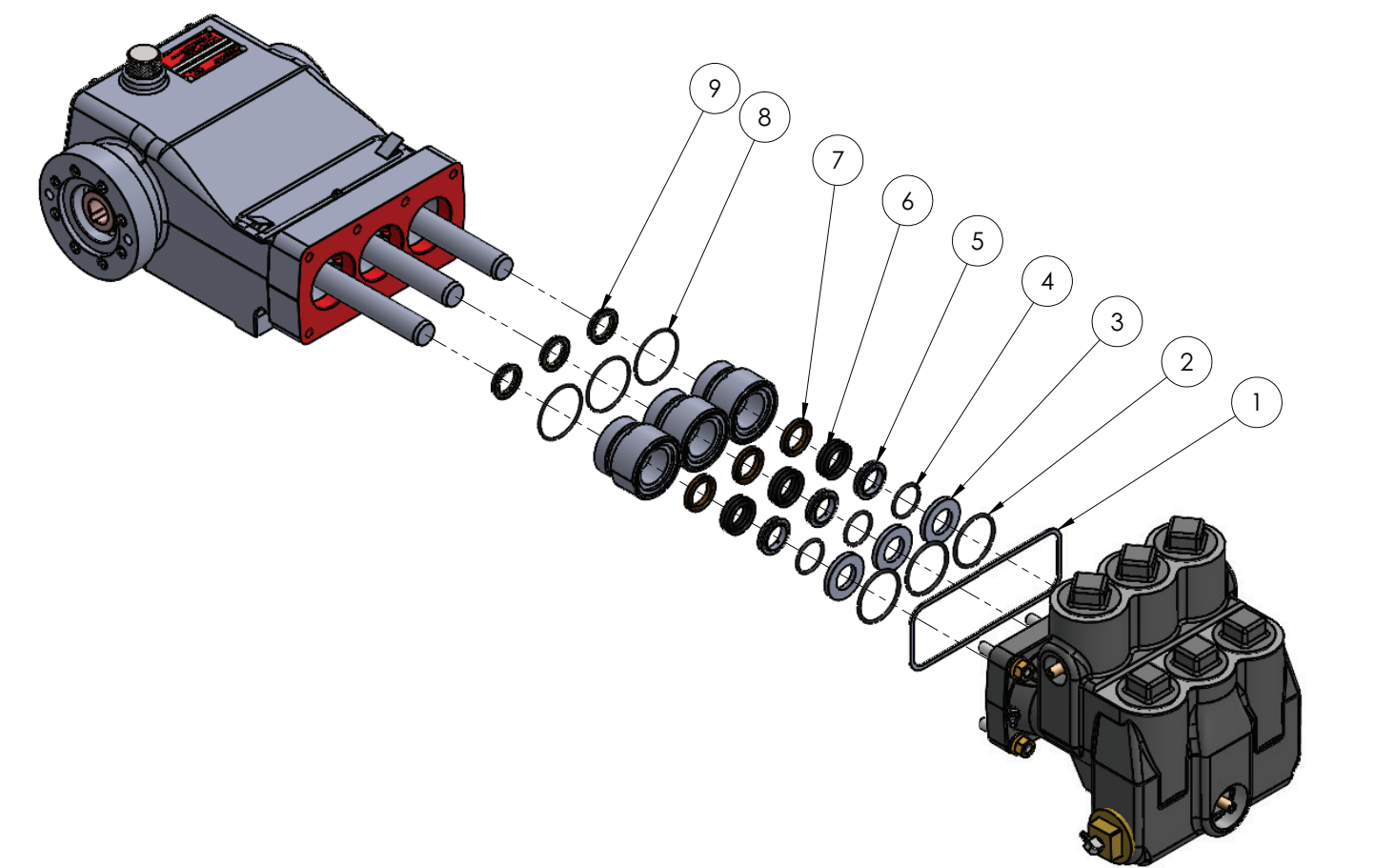
KIT SELECTION TABLE

KIT ORDERING NO.	SERIES
528812157	DP28-55
528812167	DP40-38, DP40-38-H/D
528812177	DP55-28, DP55-28-H/D
528812187	DP70-22, DP70-22-H/D
528812197	DP80-20, DP80-20-H/D
528812207	DP90-18, DP90-18-H/D
528812217	DP120-12, DP120-12-H/D

NOTES

- 1. *ITEM #12 NOT SHOWN.
- 2. NOT ALL PARTS ARE ASSEMBLED IN ALL PUMPS; CONSTRUCTION MAY VARY.

CXP SERIES - PACKING REPAIR KIT (FM1.2)



PARTS INCLUDED IN PACKING REPAIR KIT

PART NO.	PART DESCRIPTION	QTY
1	Gasket, Flange	1
2	O-Ring	3
3	Washer, Seal	3
4	O-Ring	3
5	Male Adapter*	3
6	Seal, High Pressure	6
7	Female Adapter*	3
8	O-Ring*	3
9	Seal Low Pressure	3

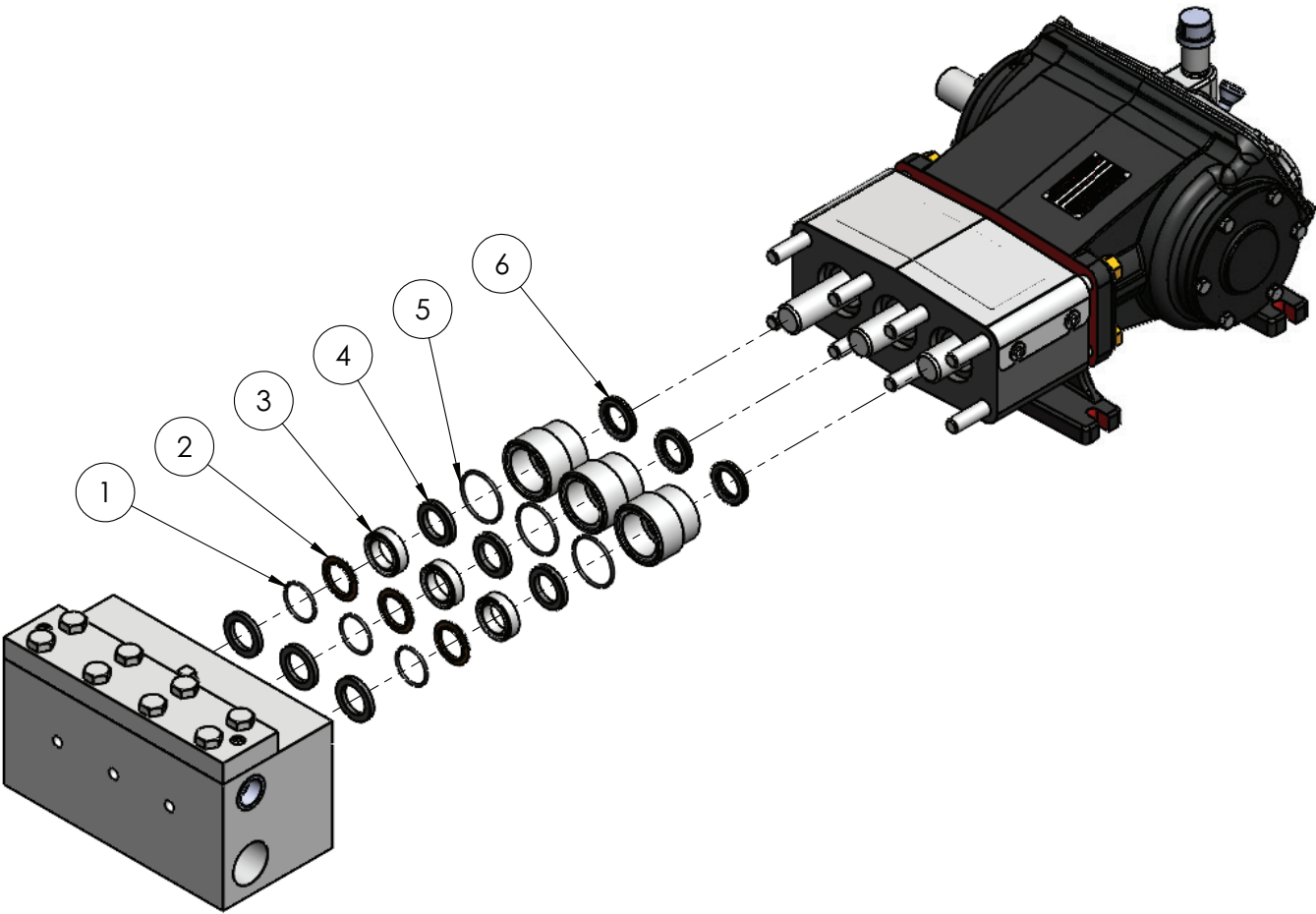
KIT SELECTION TABLE

KIT ORDERING NO.	SERIES
528812227	CXP30-12
528812237	CXP26-14
528812247	CXP22-16
528812257	CXP18-20
528812267	CXP14-24
528812277	CXP7-30
528812287	CXP5-35

NOTES

1. *ITEMS #5, #7, #8 NOT PRESENT IN CXP30-12 & CXP26-14 PUMPS.

CPM SERIES - PACKING REPAIR KIT (FM1.2)



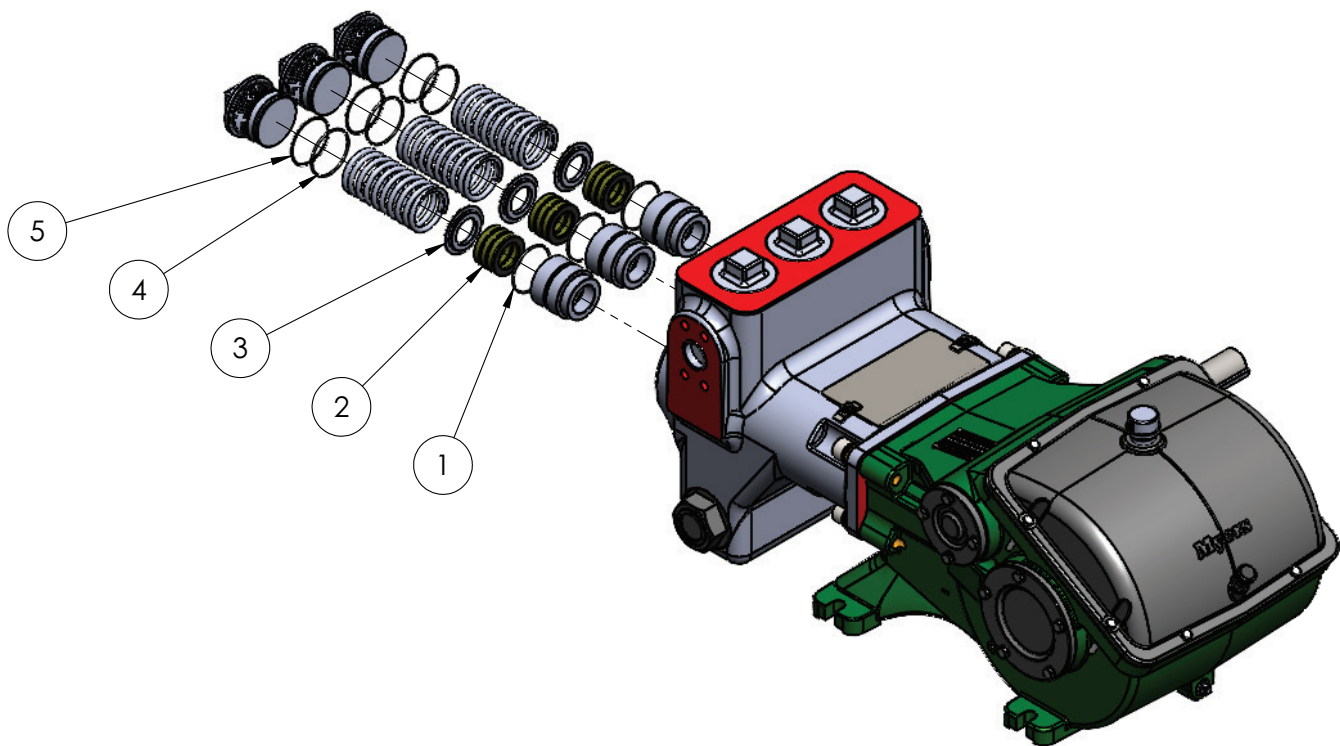
PARTS INCLUDED IN PACKING REPAIR KIT

PART NO.	PART DESCRIPTION	QTY
1	O-Ring	3
2	Male Adapter	3
3	Packing	3
4	Ring, Bottom Adapter	3
5	O-Ring	3
6	Seal	3

KIT SELECTION TABLE

KIT ORDERING NO.	SERIES
528812297	CPM18-40
528812307	CPM24-30

DP SERIES - PACKING REPAIR KIT (FM1.2)



PARTS INCLUDED IN PACKING REPAIR KIT

PART NO.	PART DESCRIPTION	QTY
1	O-Ring, Seal Cartridge	3
2	Packing, Plunger	3
3	Washer Spring	3
4	O-Ring	3
5	Backup Ring	3
6	Backup Ring, Seal Cartridge*	3

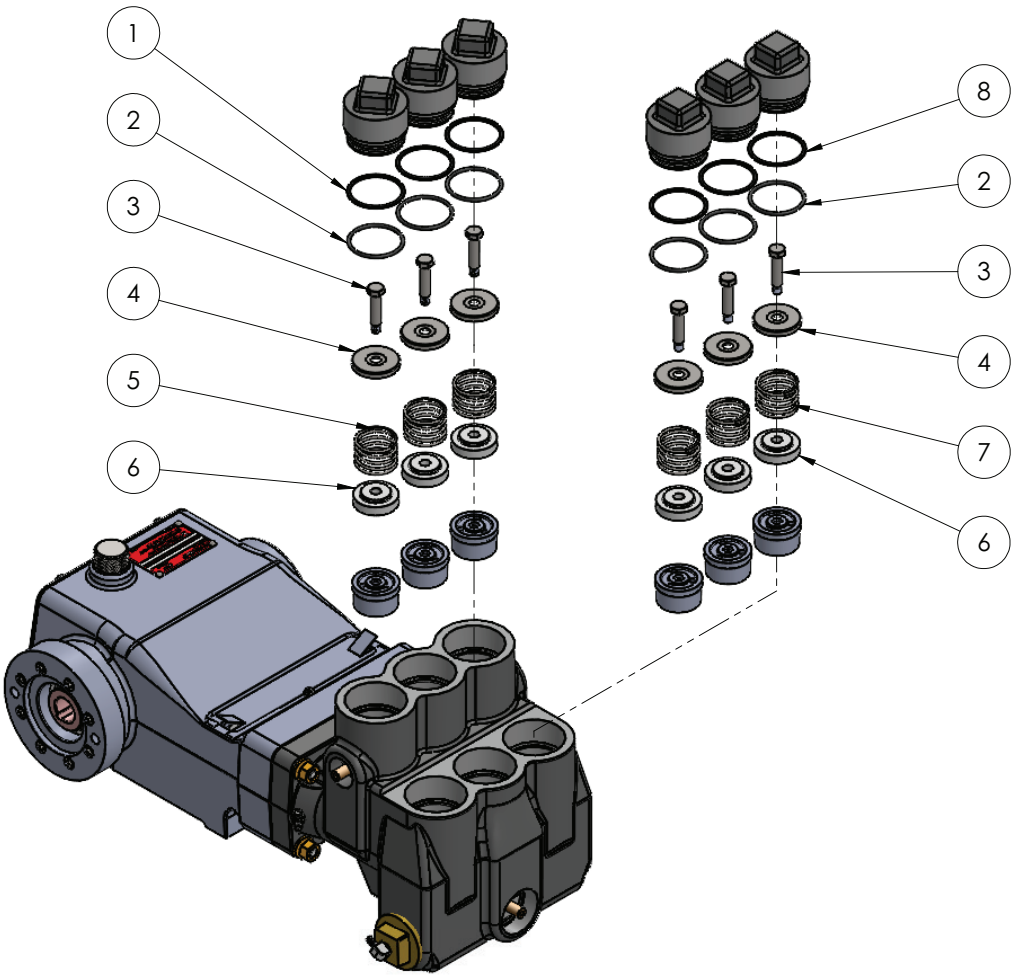
NOTES

- 1. *ITEM #6 NOT SHOWN.
- 2. NOT ALL PARTS ARE ASSEMBLED IN ALL PUMPS; CONSTRUCTION MAY VARY.

KIT SELECTION TABLE

KIT ORDERING NO.	SERIES
528812317	DP28-55
528812327	DP40-38, DP40-38-H/D
528812337	DP55-28, DP55-28-H/D
528812347	DP70-22, DP70-22-H/D
528812357	DP80-20, DP80-20-H/D
528812367	DP90-18, DP90-18-H/D
528812377	DP120-12, DP120-12-H/D

CXP SERIES - VALVE REPAIR KIT (FM2)



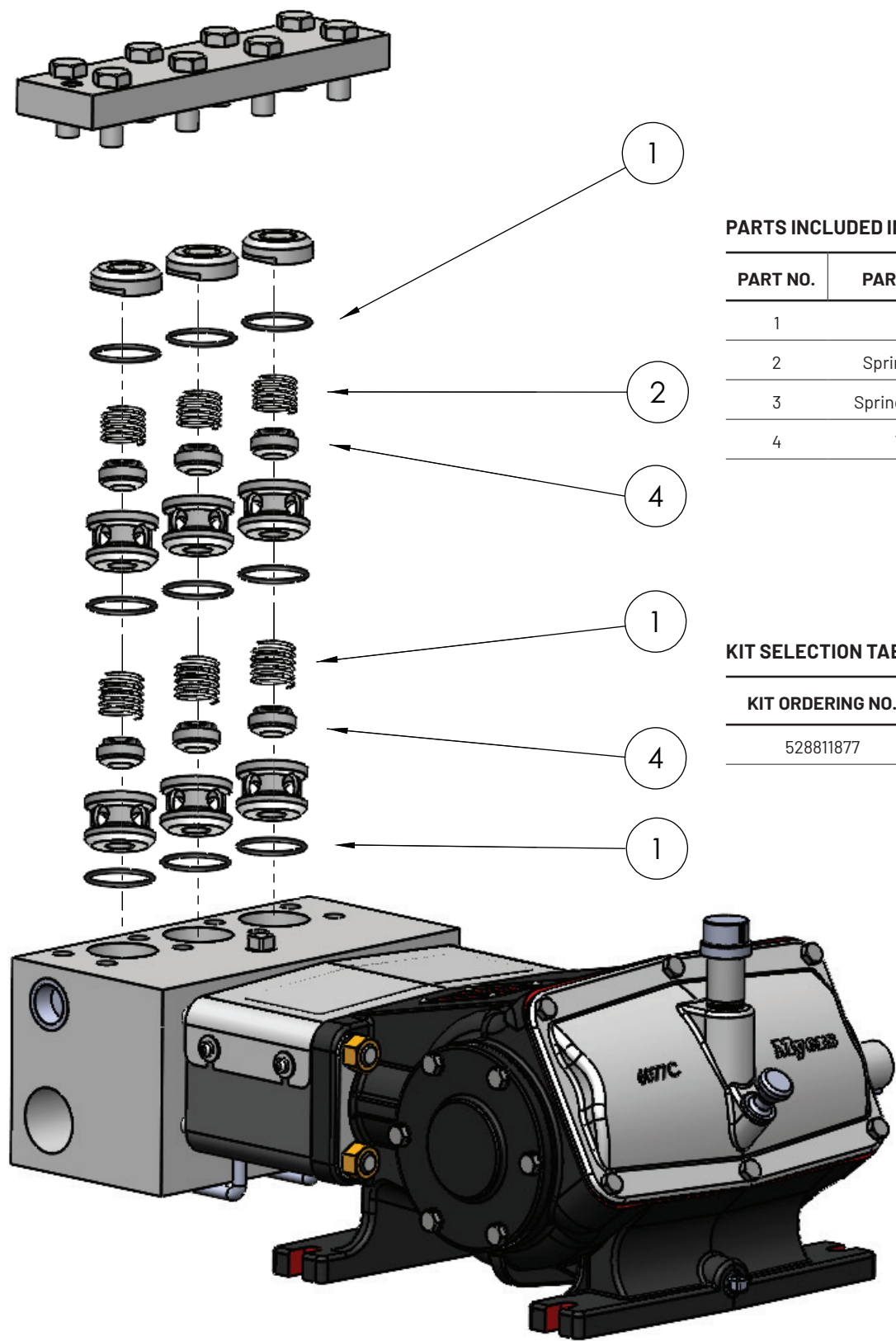
PARTS INCLUDED IN PACKING REPAIR KIT

PART NO.	PART DESCRIPTION	QTY
1	Ring, Backup	3
2	O-Ring	6
3	Screw, Cap, Thrd. Lock	6
4	Spring, Retainer	6
5	Spring, Discharge Valve	3
6	Valve, Acetal	6
7	Spring, Suction Valve	3
8	Ring, Backup	3

KIT SELECTION TABLE

KIT ORDERING NO.	SERIES
528811837	CXP5-35, CXP7-30
528811847	CXP14-24, CXP18-20, CXP22-16
528811857	CXP26-14
528811867	CXP30-12

CPM SERIES - VALVE REPAIR KIT (FM2)



PARTS INCLUDED IN VALVE REPAIR KIT

PART NO.	PART DESCRIPTION	QTY
1	O-Ring	9
2	Spring, Suction Valve	3
3	Spring, Discharge Valve	3
4	Valve, Acetal	6

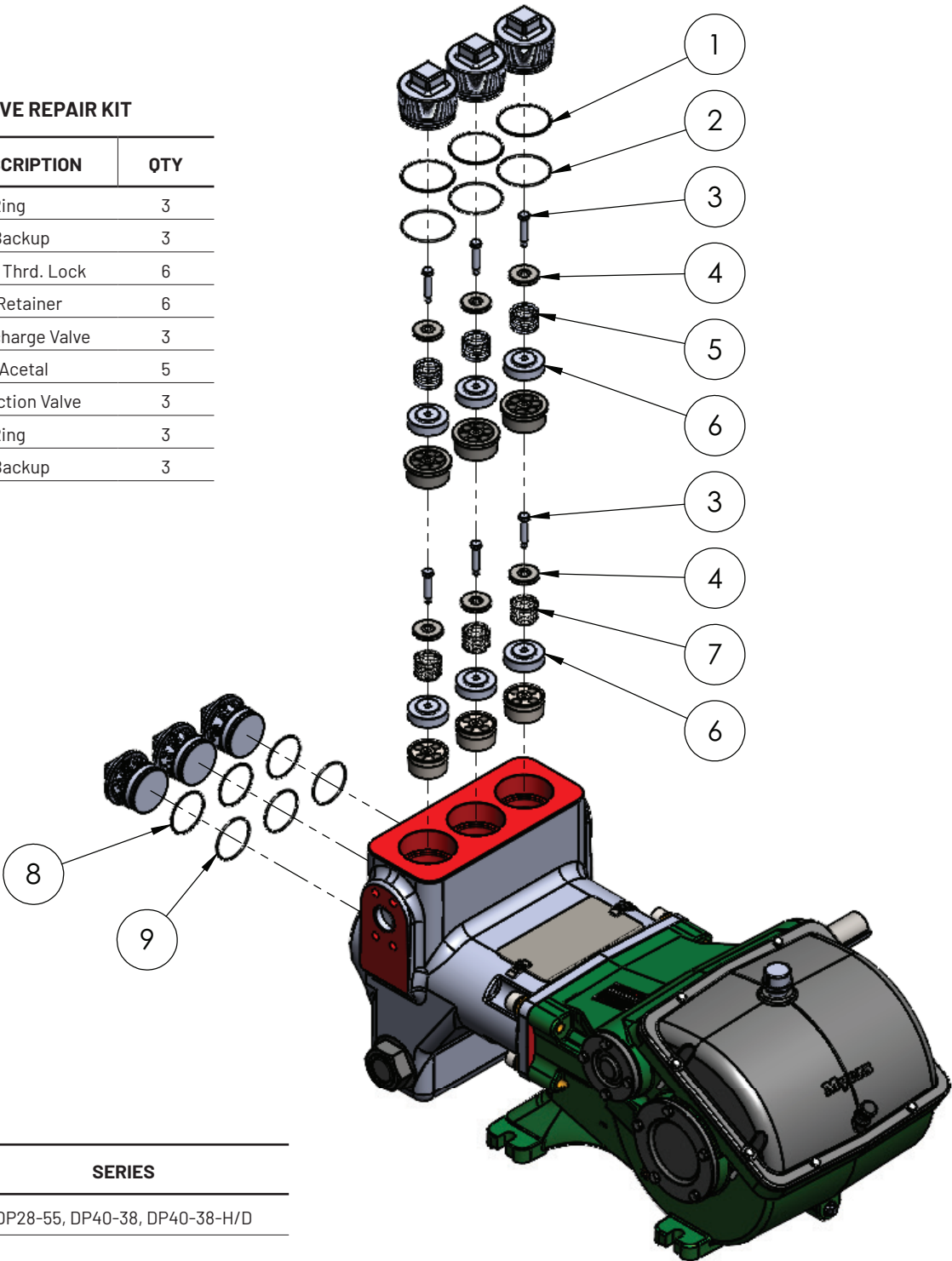
KIT SELECTION TABLE

KIT ORDERING NO.	SERIES
528811877	CPM18-40, CPM24-30

DP SERIES - VALVE REPAIR KIT (FM2)

PARTS INCLUDED IN VALVE REPAIR KIT

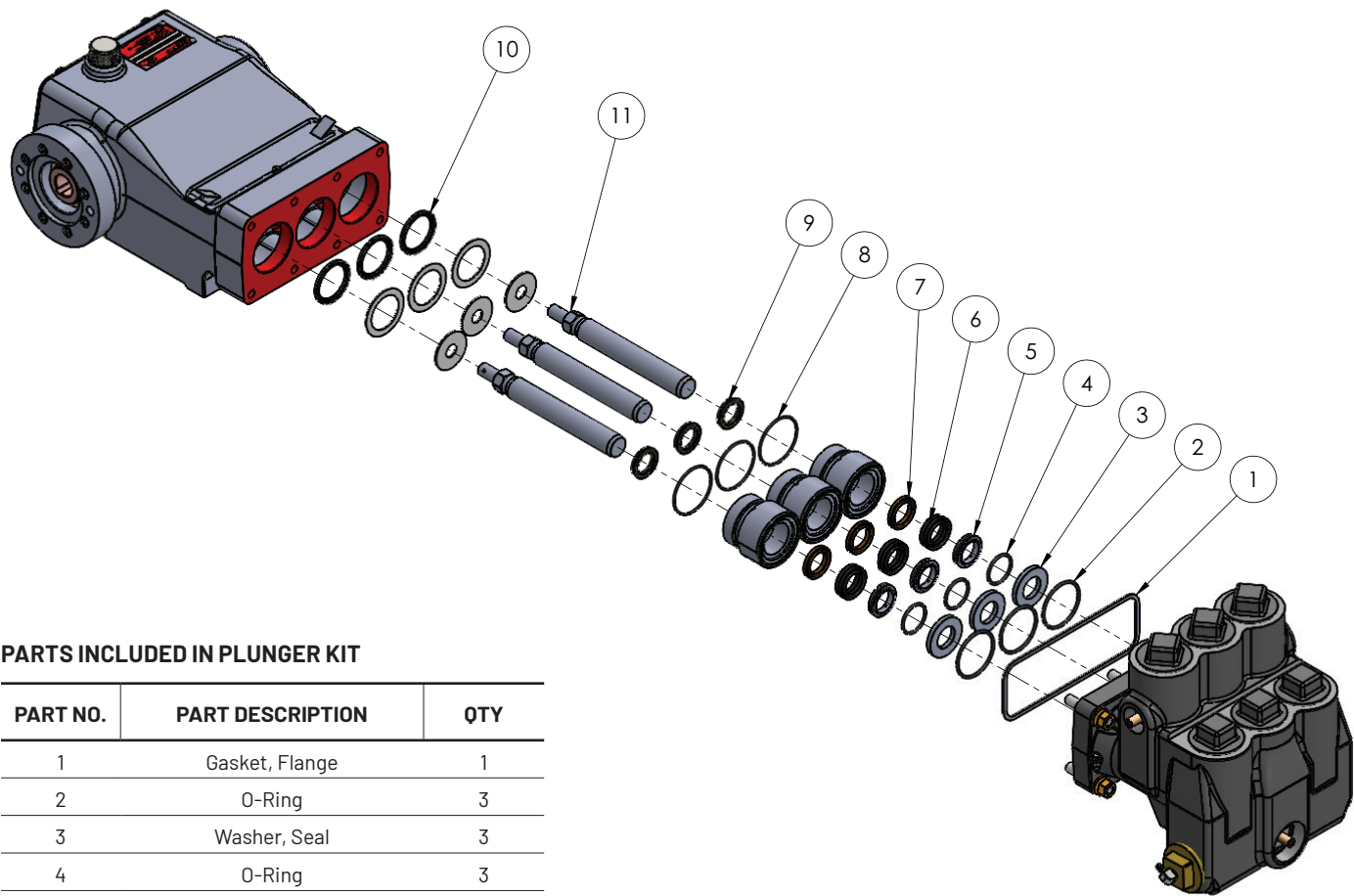
PART NO.	PART DESCRIPTION	QTY
1	O-Ring	3
2	Ring, Backup	3
3	Screw Cap, Thrd. Lock	6
4	Spring, Retainer	6
5	Spring, Discharge Valve	3
6	Valve, Acetal	5
7	Spring, Suction Valve	3
8	O-Ring	3
9	Ring, Backup	3



KIT SELECTION TABLE

KIT ORDERING NO.	SERIES
528811887	DP28-55, DP40-38, DP40-38-H/D
528811897	DP70-22, DP70-22-H/D, DP80-20, DP80-20-H/D DP90-18, DP90-18-H/D, DP120-12, DP120-12-H/D

CXP SERIES - PLUNGER REPAIR KIT (FM3)



PARTS INCLUDED IN PLUNGER KIT

PART NO.	PART DESCRIPTION	QTY
1	Gasket, Flange	1
2	O-Ring	3
3	Washer, Seal	3
4	O-Ring	3
5	Male Adapter*	3
6	Seal, High Pressure	6
7	Female Adapter*	3
8	O-Ring*	3
9	Seal, Low Pressure	3
10	Oil Seal	3
11	Plunger	3

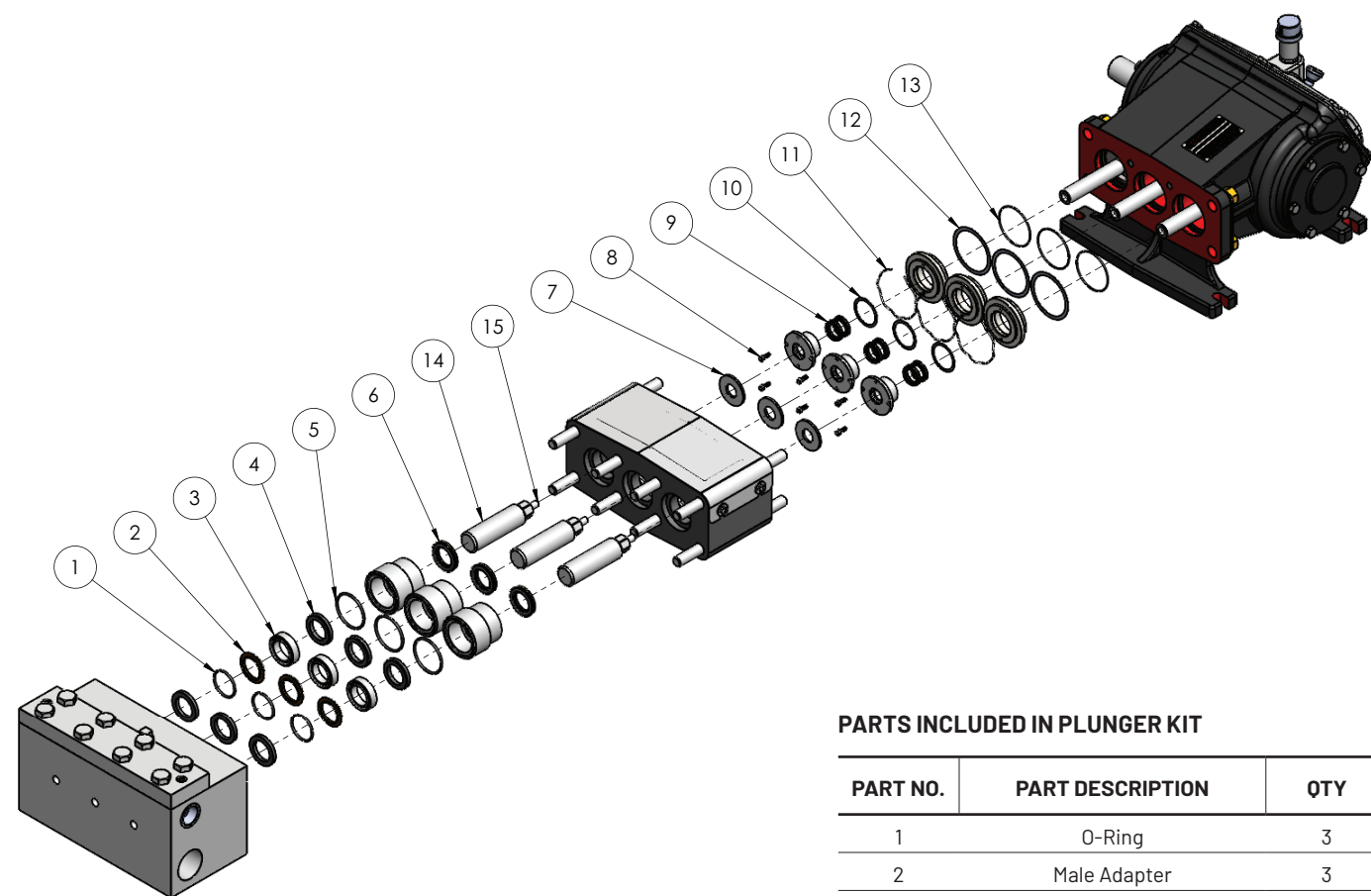
KIT SELECTION TABLE

KIT ORDERING NO.	SERIES
528811907	CXP30-12
528811917	CXP26-14
528811927	CXP22-16
528811937	CXP22-16
528811947	CXP14-24
528811957	CXP7-30
528811967	CXP5-35

NOTES

1. *ITEMS #5, #7, #8 NOT PRESENT IN CXP30-12 & CXP25-14 PUMPS.

CPM SERIES - PLUNGER REPAIR KIT (FM3)



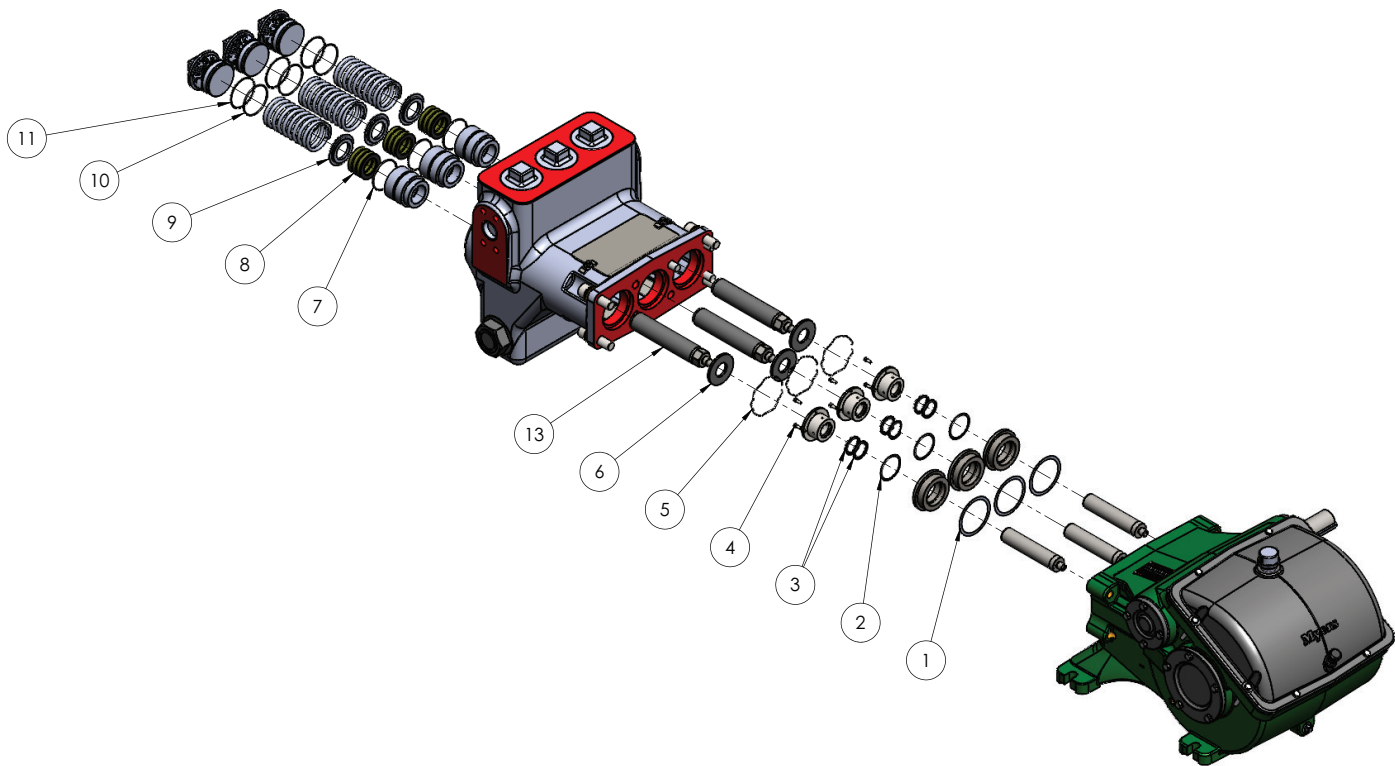
KIT SELECTION TABLE

KIT ORDERING NO.	SERIES
528811977	CPM18-40
528811987	CPM24-30

PARTS INCLUDED IN PLUNGER KIT

PART NO.	PART DESCRIPTION	QTY
1	O-Ring	3
2	Male Adapter	3
3	Packing	3
4	Ring, Bottom Adapter	3
5	O-Ring	3
6	Seal	6
7	Washer Gasket	3
8	Screw, Skt. HD#10 & 1/2	6
9	Cup, U Metric 22	6
10	Gasket	3
11	Spring	3
12	Gasket	3
13	O-Ring	3
14	Plunger	3
15	Stud, Plunger	3

CXP SERIES - PLUNGER REPAIR KIT (FM3)



PARTS INCLUDED IN PLUNGER KIT

PART NO.	PART DESCRIPTION	QTY
1	Gasket, Retainer	3
2	Gasket, Oil Seal Housing	3
3	Oil Seal	6
4	Screw, Allen	6
5	Spring	3
6	Slinger	3
7	O-Ring, Seal Cartridge	3
8	Packing, Plunger	3
9	Washer Spring	3
10	O-Ring	3
11	Backup Ring	3
12	Backup Ring, Seal Cartridge*	3
13	Plunger, Coated	3

KIT SELECTION TABLE

KIT ORDERING NO.	SERIES
528811997	DP28-55
528812007	DP40-38, DP40-38-H/D
528812017	DP55-28, DP55-28-H/D
528812027	DP70-22, DP70-22-H/D
528812037	DP80-20, DP80-20-H/D
528812047	DP90-18, DP90-18-H/D
528812057	DP120-12, DP120-12-H/D

NOTES

- 1. *ITEM #12 NOT SHOWN.
- 2. NOT ALL PARTS ARE ASSEMBLED IN ALL PUMPS; CONSTRUCTION MAY VARY.

NOTES PAGE

This image shows a single sheet of white paper with horizontal ruling lines. The lines are evenly spaced and run across the width of the page. There is no text or other markings on the paper.

NOTES PAGE

STANDARD LIMITED WARRANTY

Pentair Myers® warrants its products against defects in material and workmanship for a period of 12 months from the date of shipment from Pentair Myers or 18 months from the manufacturing date, whichever occurs first – provided that such products are used in compliance with the requirements of the Pentair Myers catalog and technical manuals for use in pumping raw sewage, municipal wastewater or similar, abrasive-free, noncorrosive liquids.

During the warranty period and subject to the conditions set forth, Pentair Myers, at its discretion, will repair or replace to the original user, the parts that prove defective in materials and workmanship. Pentair Myers reserves the right to change or improve its products or any portions thereof without being obligated to provide such a change or improvement for prior sold and/or shipped units.

Start-up reports and electrical schematics may be required to support warranty claims. Submit at the time of start-up through the Pentair Myers website: <http://forms.pentairliterature.com/startupform/startupform.asp?type=m>. Warranty is effective only if Pentair Myers authorized control panels are used. All seal fail and heat sensing devices must be hooked up, functional and monitored or this warranty will be void. Pentair Myers will cover only the lower seal and labor thereof for all dual seal pumps. Under no circumstance will Pentair Myers be responsible for the cost of field labor, travel expenses, rented equipment, removal/reinstallation costs or freight expenses to and from the factory or an authorized Pentair Myers service facility.

This limited warranty will not apply: (a) to defects or malfunctions resulting from failure to properly install, operate or maintain the unit in accordance with the printed instructions provided; (b) to failures resulting from abuse, accident or negligence; (c) to normal maintenance services and parts used in connection with such service; (d) to units that are not installed in accordance with applicable local codes, ordinances and good trade practices; (e) if the unit is moved from its original installation location; (f) if unit is used for purposes other than for what it is designed and manufactured; (g) to any unit that has been repaired or altered by anyone other than Pentair Myers or an authorized Pentair Myers service provider; (h) to any unit that has been repaired using non factory specified/OEM parts.

Warranty Exclusions: PENTAIR MYERS MAKES NO EXPRESS OR IMPLIED WARRANTIES THAT EXTEND BEYOND THE DESCRIPTION ON THE FACE HEREOF. PENTAIR MYERS SPECIFICALLY DISCLAIMS THE IMPLIED WARRANTIES OF MERCHANTABILITY AND FITNESS FOR ANY PARTICULAR PURPOSE.

Liability Limitation: IN NO EVENT SHALL PENTAIR MYERS BE LIABLE OR RESPONSIBLE FOR CONSEQUENTIAL, INCIDENTAL OR SPECIAL DAMAGES RESULTING FROM OR RELATED IN ANY MANNER TO ANY PENTAIR MYERS PRODUCT OR PARTS THEREOF. PERSONAL INJURY AND/OR PROPERTY DAMAGE MAY RESULT FROM IMPROPER INSTALLATION. PENTAIR MYERS DISCLAIMS ALL LIABILITY, INCLUDING LIABILITY UNDER THIS WARRANTY, FOR IMPROPER INSTALLATION. PENTAIR MYERS RECOMMENDS INSTALLATION BY PROFESSIONALS.

Some states do not permit some or all of the above warranty limitations or the exclusion or limitation of incidental or consequential damages and therefore such limitations may not apply to you. No warranties or representations at any time made by any representatives of Pentair Myers shall vary or expand the provision hereof.



1101 Myers Parkway | Ashland, OH 44805 | Ph: 855.274.8947 | pentair.com/myers

All indicated Pentair trademarks and logos are property of Pentair. Third party registered and unregistered trademarks and logos are the property of their respective owners.

©2025 Pentair. All Rights Reserved.

MY4402(06-26-25)