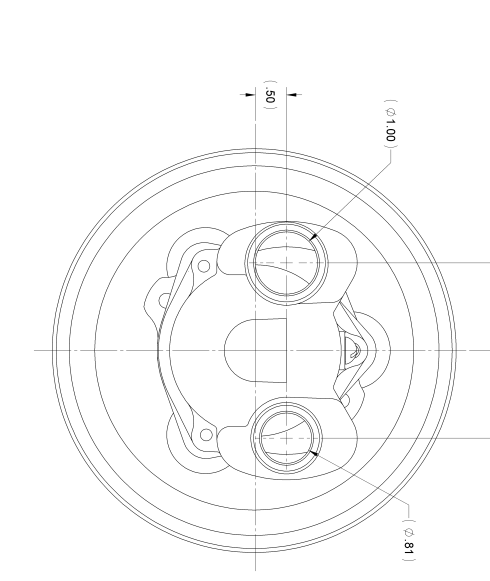
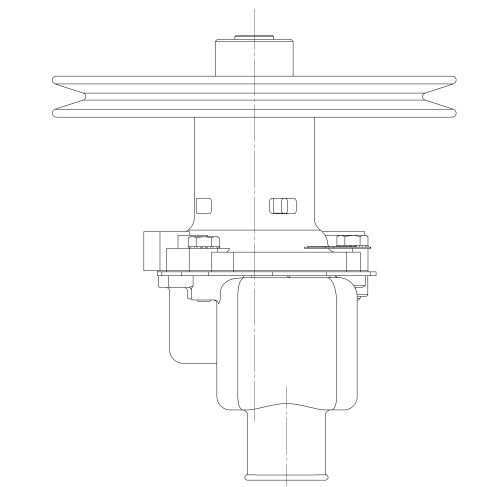
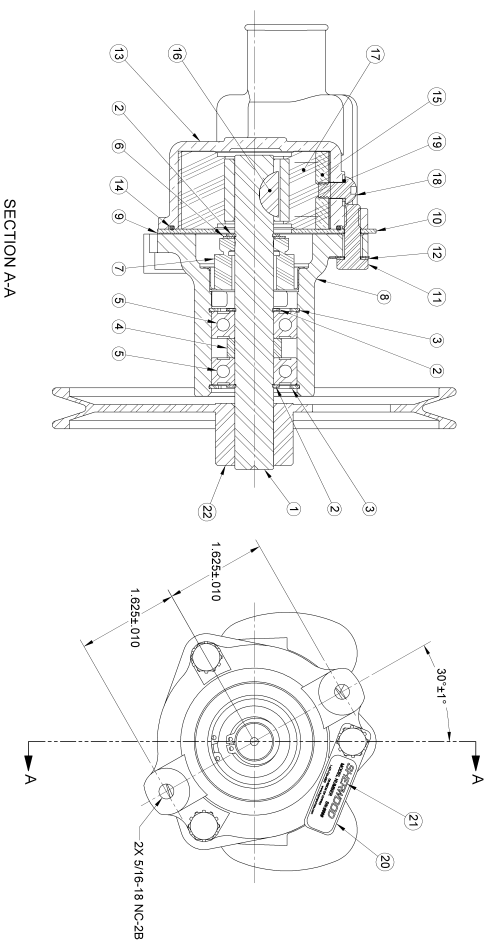
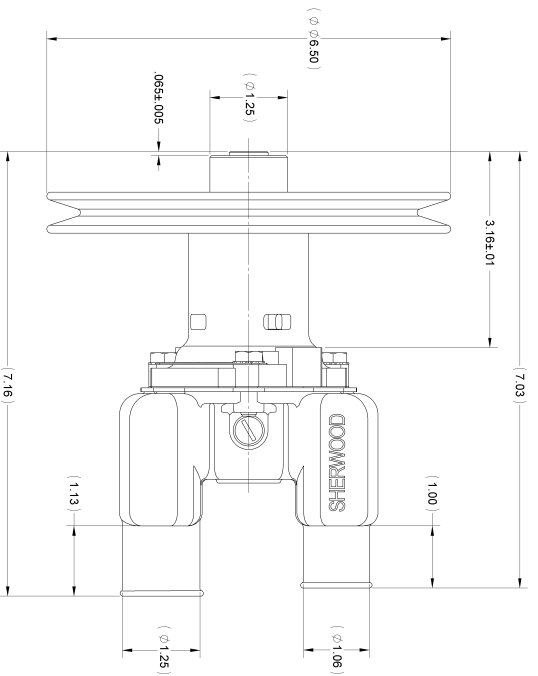


ITEM NO.	PART NUMBER	DESCRIPTION	QTY.
1	14363	SHAFT	1
2	04289	EXT. RETAINING RING	1
3	04289	INT. RETAINING RING	2
4	05133	SPACER	1
5	12211	BALL BEARING	2
6	12211	BALL BEARING	2
7	12314	SEAL/SEAL ASSY	1
8	21153	BODY	1
9	12885	GASKET	1
10	12885	WEAR PLATE	3
11	1420	W/4-20 HHCS	3
12	21757	LOCKWASHER EXT. TOOTH	3
13	21151	HOUSING	1
14	12231	ORING	1
15	04432	WOODRUFF KEY	1
16	04432	RUBBER IMPELLER	1
17	09985	SCREW 1/4-20 ROUND HD	1
18	19995	SCREW 1/4-20 ROUND HD	1
19	19995	CAM WASHER	1
20	19995	CAM WASHER	1
21	23083	LABEL	1
22	21154	PULLEY ASSEMBLY	1

NOTES:

1. APPLY BEAD OF PERMATEX AROUND THREADED HOLE IN CAM PRIOR TO ASSEMBLY. (ITEM 15).
2. USE PAC/EASE, OR EQUIV., WHEN INSTALLING SEAL/SEAL ASSY. (ITEM 7).
3. USE COOLANT TO AID IN INSTALLATION OF RUBBER IMPELLER. (ITEM 17).
4. TORQUE 1/4-20 HHCS TO 5 - 8 FT/LBS. (ITEM 11).
5. PRESSURE TEST PUMP TO 20 - 30 PSI.
6. PRINT ON LABEL. (ITEM 21).



REV.	QTY.	DESCRIPTION	DATE	BY	CHKD.
K	4227	REWORKED TO ADD SEAL ASSEMBLY, ELIMINATE IMPELLER ASSEMBLY	11/17/2000	DAVE	

**SHERWOOD**  
A Division of  
30750th Avenue NW, Seattle, WA 98112 (206) 764-6300

DESIGNING BASED ON MODEL Y14.004.004 800 IMP SCALE PRINT  
SCALE: 1:1  
DATE: 11/10/1992

THIRD ANGLE PROJECTION  
SCALE: 1:1  
DATE: 11/10/1992

THIS DRAWING IS THE PROPERTY OF SHERWOOD  
MOTOR MFG. CO. IT IS TO BE USED ONLY FOR THE  
PURPOSES FOR WHICH IT WAS ISSUED.  
G9901

REV.	DATE	BY	CHKD.
	11/10/1992	DAVE	