

RV PRODUCT DATA SHEET

OEM: 4029-181-A32

AFTERMARKET: 4029-181-B32

APPLICATION

Multi-fixture RV adjustable by-pass fresh water pump installation. Other uses may include 12V DC pressurized water systems in cabins. This pump may be used for general fresh water transfer.

PUMP:

Type: 4 Chamber Diaphragm pump
 Ports: 1/2"-14 NPSM-Male.
 Liquid: 54 °C [130 °F] Max
 Dry-Prime: 1.82 M [6 feet]
 Inlet PSI: 2.1 Bar [30 PSI] Max
 Run Dry: Yes

ELECTRICAL:

Motor: 12VDC Permanent Magnet, Intermittent Duty
 Protection: Thermal Overload, Automatic Restart
 Leads: 16 AWG, 25 cm [10"] Red +, 33 cm [13"] Black -
 Fuse: 5 Amp Recommended
 Control: Shut-Off 1.37 Bar [20 PSI]
 Restart 0.82 Bar [12 PSI]
 Max By-Pass 1.72 Bar [25 PSI]

MATERIALS:

Housing: Polypro
 Valves: EPDM
 Diaphragm: Santoprene
 Hardware: Stainless and Zinc Plated Steel

APPROVALS:

CSA, CE, e-Mark

WARRANTY:

Contact SHURflo Europe for details

SHIPPING:

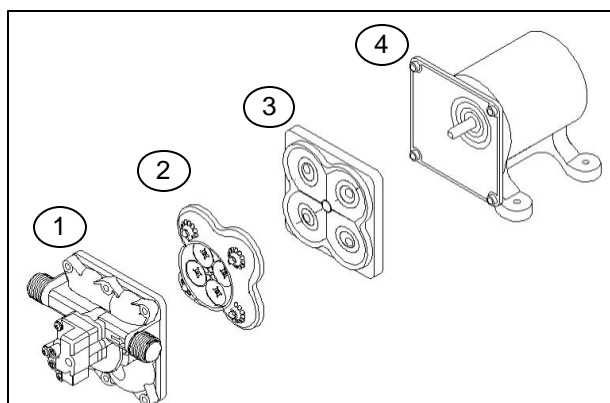
Net Weight: 2.3 Kg [5 Lb] each
 Carton Quantity: 12
 Carton Weight: 27 Kg [60 Lb]
 Carton Size: 24"L x 18"W x 11"H
 60.9cm x 45.7cm x 27.9cm
 [24"L x 18"W x 11"H]

RELATED DOCUMENTS:

Catalog: MS-030-138
 Installation Manual: 911-1023
 Applications Spec Guide: MS-020-005



SHURflo's New 4029 series fresh water pump design was created with unique one-piece diaphragm and internal by-pass, assuring long life and top performance in all plumbing systems. Designed as the next legendary pump to exceed the expectations of our customers, the 4029 series pump is constructed for high flow demand, low noise and no rapid cycling. SHURflo's quality reputation has been built on the reliability and dependability of every pump we build. The 4029 series fresh water automatic demand pump is super quiet, thermally protected and can run dry without damage.

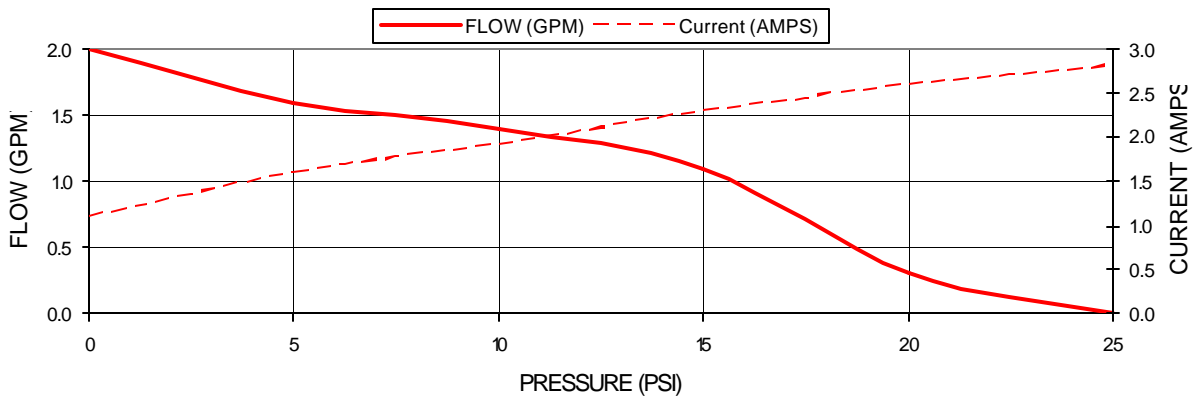


Replacement Kits

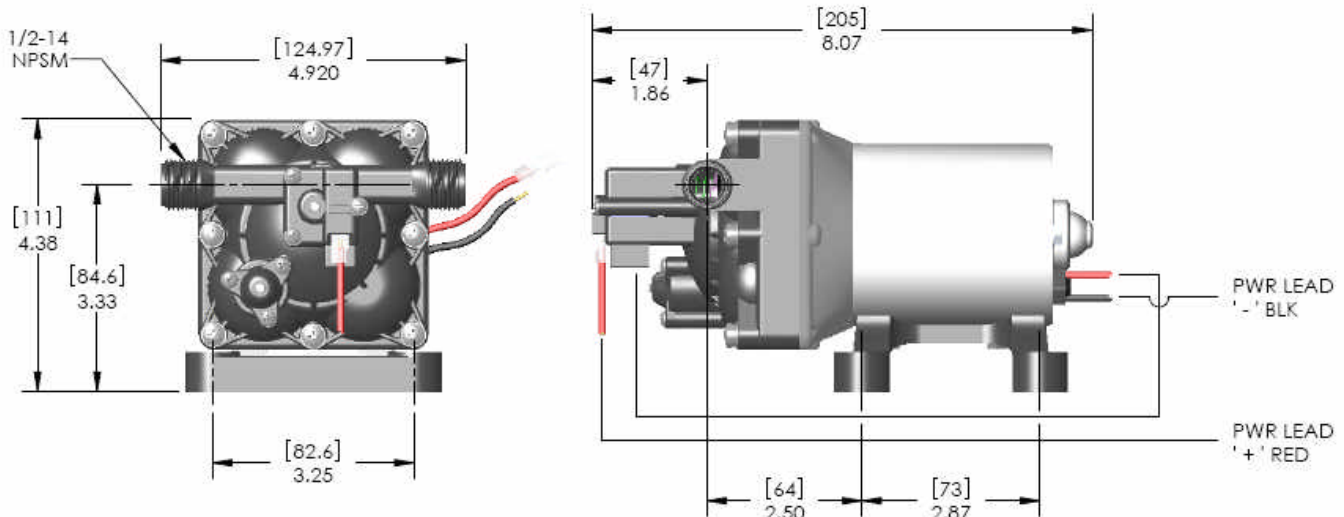
| Number | Description | Part Number |
|-----------|--------------|--------------|
| 1 | Upper Assy | 94-890-07 |
| 2 | Valve Assy | 94-800-01 |
| 3 | Drive Assy | 94-800-02 |
| 4 | Motor | 94-11-189-05 |
| Not Shown | Check Valve | 94-800-03 |
| 1,2,3 | Pump Head | 94-800-05 |
| Not Shown | Pressure Sw. | 94-890-00 |

TYPICAL PERFORMANCE

| PRESSURE | | FLOW | | CURRENT |
|----------|-----|------|-----|---------|
| BAR | PSI | GPM | LPM | AMPS |
| 0.0 | 0 | 2.0 | 7.6 | 1.1 |
| 0.3 | 5 | 1.6 | 6.0 | 1.6 |
| 0.7 | 10 | 1.4 | 5.3 | 1.9 |
| 1.0 | 15 | 1.1 | 4.1 | 2.3 |
| 1.4 | 20 | 0.3 | 1.1 | 2.6 |
| 1.7 | 25 | 0 | 0 | 2.8 |



DIMENSIONS [mm]



Visit our Web Site at <http://www.shurflo.com>

Shurflo reserves the right to update specifications, change prices, or make substitutions without notice.

SHURflo Europe, Middle East, Africa
Pentair Water Belgium bvba
 Industriepark Wolfstee, Toekomstlann 30
 B-2200 Herentals, Belgium
 Phone + 32-14-283500 Fax + 32-14-283505



SHURflo®



**Pentair
Water**
 FLOW TECHNOLOGIES GROUP