



STRUCTURAL CH12080

INSTALLATION PROCEDURE USED ON DST 10990,

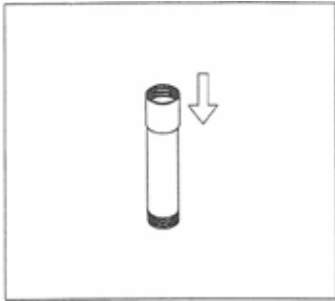
10956, 10985, 11092, 11093, 11094

INSTALLATION PROCEDURE FOR SIDE MOUNT TOP/BOTTOM HUB AND LATERAL SYSTEM WITH FLANGE

[36" - 48"] DIAMETER TANKS

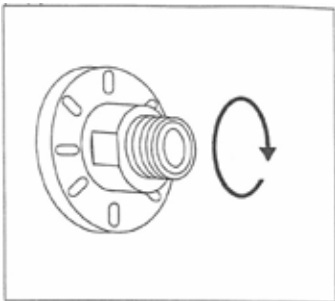
STEP 1

Locate the 3" SxT female adaptor and the 3" horizontal pipe threaded on one end. Using CPVC cement, bond the 3" female adaptor to the pipe.



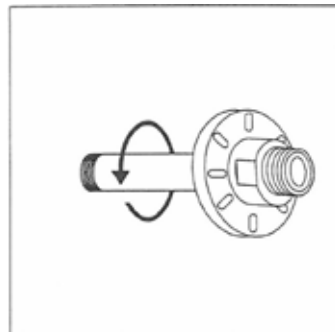
STEP 2

Locate the 3" NPT x 3" NPSM connector. With the o-ring in place, thread the connector into the flange adaptor and tighten.



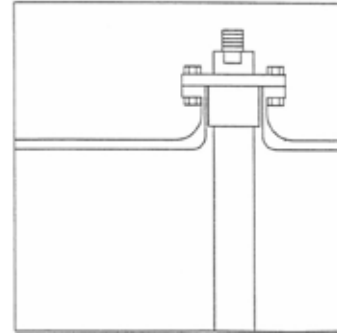
STEP 3

Thread the bonded parts from Step 1 into the 3" NPSM end of the connector.



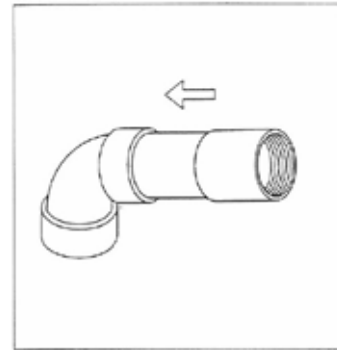
STEP 4

Put the tank in horizontal position (on a protective surface). With the o-ring in place on the flange adaptor, insert the assembly through the side flange in the tank and install. Use two (2) bolts to locate the assembly.



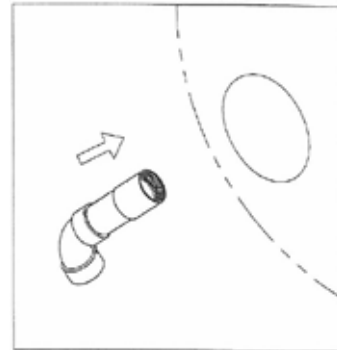
STEP 5

Locate another 3" SxT female adaptor, 3" 90° elbow and the short CPVC horizontal pipe. Bond the 3" SxT adaptor, the 3" 90° elbow, and the short CPVC pipe nipple together.



STEP 6

Insert this assembly through the bottom opening of the tank and thread the assembly into the pipe from the side flange.

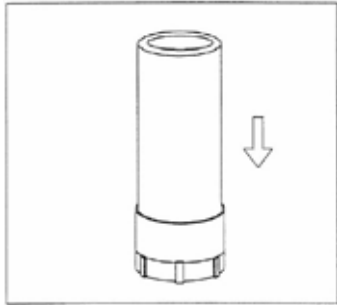


CALIFORNIA PROPOSITION 65 WARNING

⚠ WARNING: This product contains chemicals known to the State of California to cause cancer or birth defects or other reproductive harm.

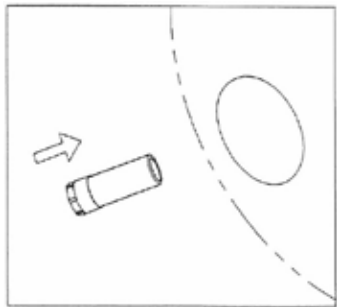
STEP 7

Locate the 3" BSP thread x 3" slip hub adapter and the vertical riser pipe for the lower distributor system. The upper diffuser system (if used) consists of a 3" SxT female adapter and a riser pipe. Use CPVC cement and bond the adapters to the riser pipes.



STEP 8

Insert the rise pipe assembly through the bottom or top opening of the tank. Check for fit before bonding into the 3" 90° elbow. CAUTION: The adapter with the 3" BSP thread must be attached to the bottom side hole assembly.



STEP 9

Thread the hub assembly into the 3" BSP coupling on the riser pipe (bottom). Thread the diffuser into the 3" female adaptor (top).



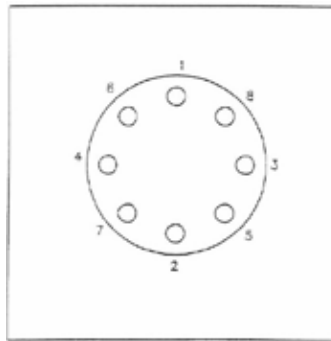
STEP 10

Install the laterals into the hub. NOTE: It might be necessary to move the hub assembly to one side to install the laterals.



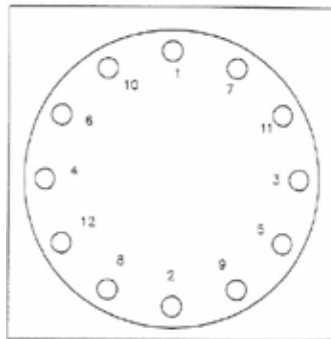
STEP 11

Install the remaining bolts into the side flange and tighten in the accepted cross pattern. Verify that the hub assembly is on the center.



STEP 12

Install the bottom flange adapter with o-ring and tighten in the accepted cross pattern. Stand tank up and moved into location for external plumbing.



For Structural Product Warranties visit: } waterpurification.pentair.com
Structural para las garantías de los productos visite: }
Pour Structural garanties produit visitez le site :

WATER QUALITY SYSTEMS

5730 NORTH GLEN PARK ROAD, MILWAUKEE, WI 53209
P: 262.238.4400 | WATERPURIFICATION.PENTAIR.COM | CUSTOMER CARE: 800.279.9404 | tech-support@pentair.com

All Pentair trademarks and logos are owned by Pentair, Inc. or its affiliates. All other registered and unregistered trademarks and logos are the property of their respective owners. Because we are continuously improving our products and services, Pentair reserves the right to change specifications without prior notice. Pentair is an equal opportunity employer.

CH12080 REV B FE16 © 2016 Pentair Residential Filtration, LLC All Rights Reserved.