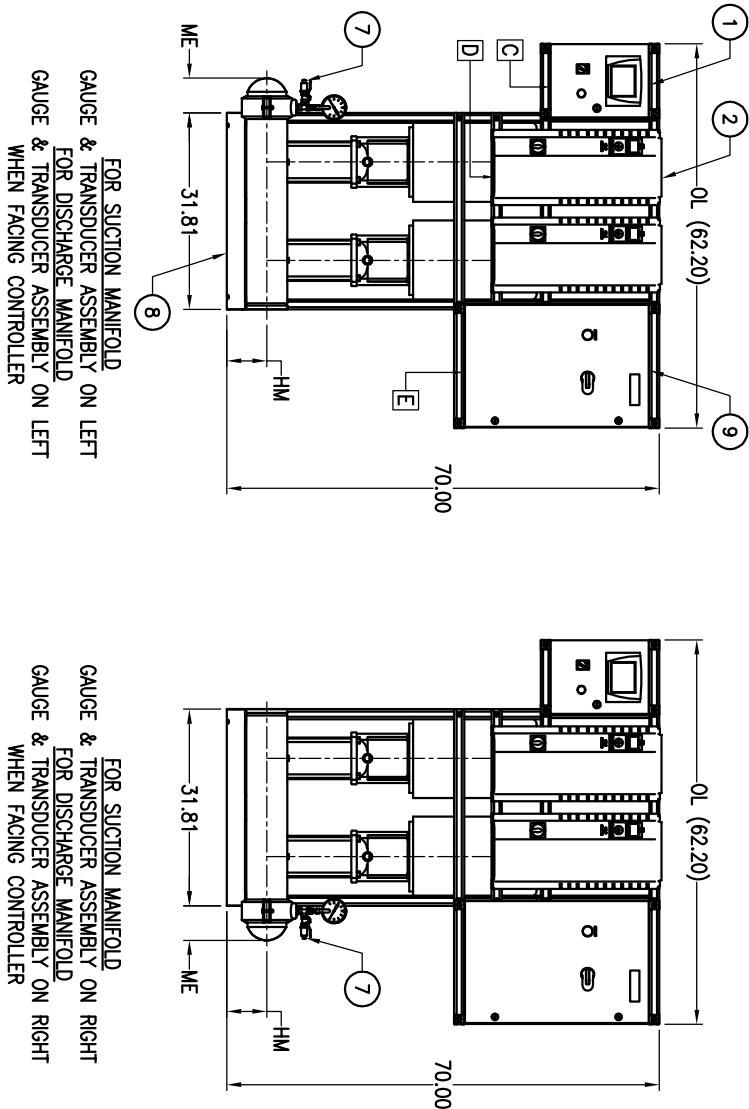
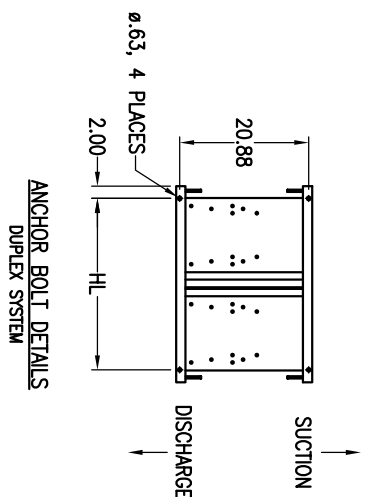
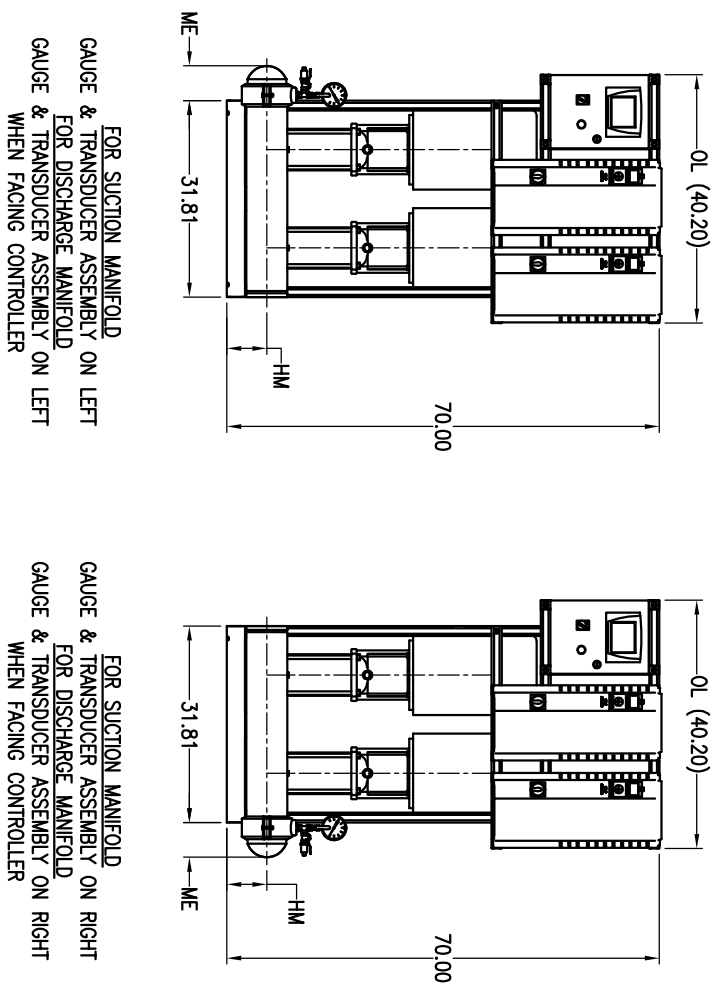


SYSTEM WITH SINGLE POINT DISCONNECT

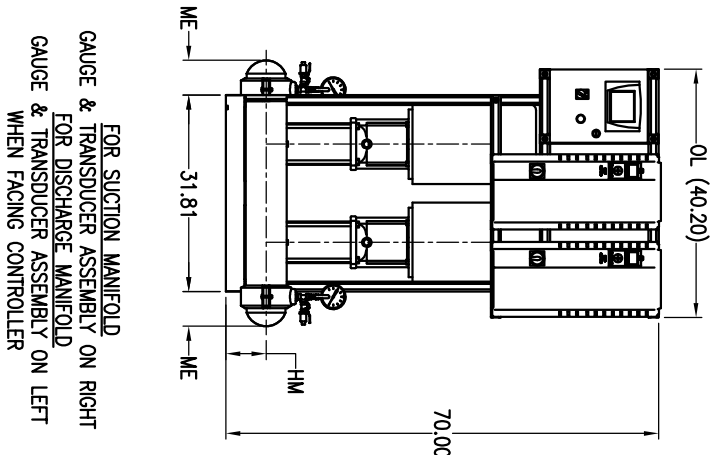
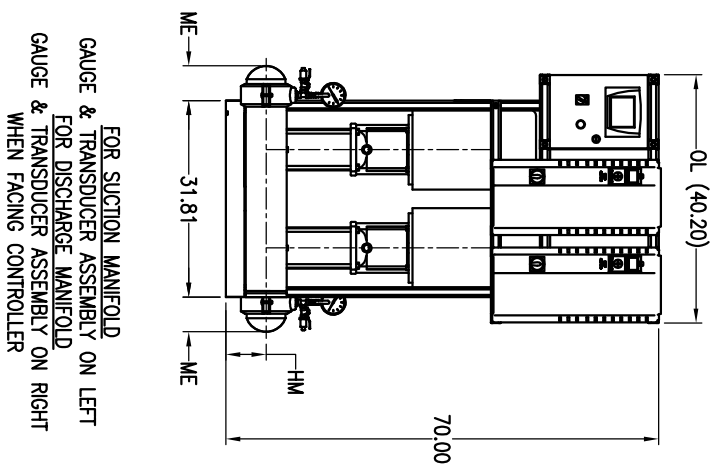
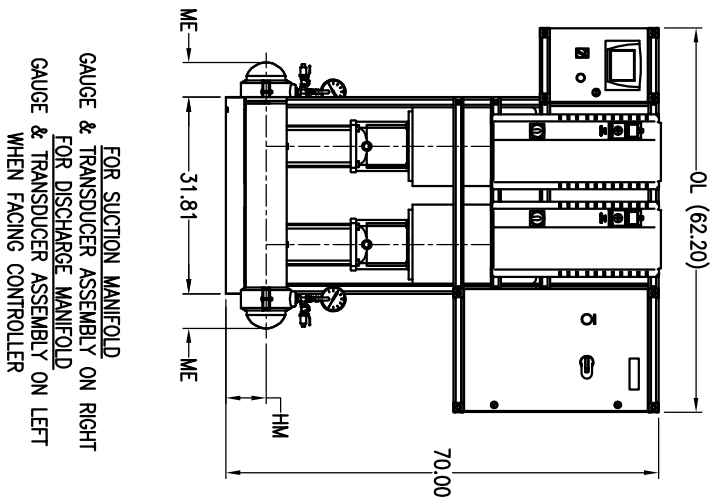
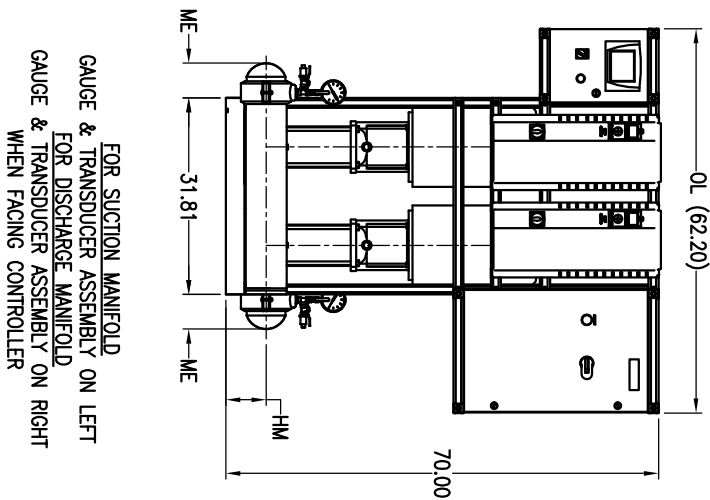


SYSTEM WITHOUT SINGLE POINT DISCONNECT



NOTES:


1. DIMENSIONS MAY VARY +/- 1/4"
2. BASE TO BE GROUTED ON SITE BY OTHERS.
3. WIRING COMPONENT LOCATION SUBJECT TO CHANGE. CONSULT FACTORY FOR AS BUILT LOCATION.
4. NEC WORKING CLEARANCE 48" FROM FRONT OF CONTROLLER FACE.
5. FACTORY TESTED AND CALIBRATED BEFORE SHIPMENT.
6. IF THERMAL RELIEF OPTION SELECTED, VALVE COMMON DRAIN PIPED TO SAME SIDE AS CUSTOMER DISCHARGE.
7. IF SPD OPTION SELECTED, INCOMING ELECTRICAL CONNECTIONS C & D ARE NO LONGER NEEDED.
8. PVM[X]20 USED IN VIEWS ABOVE.
9. DIMENSION "OL" WILL VARY BY PUMP MODEL, VFD SIZE AND SPD OPTION SELECTION.
10. CONTROLLER CAN BE MOUNTED ON EITHER LEFT OR RIGHT SIDE, DEPENDING ON CUSTOMER'S PREFERENCE.



ITEM NO.	DESCRIPTION
1	TOUCH SCREEN CONTROLLER
2	VARIABLE FREQUENCY DRIVE (VFD)
7	PRESSURE TRANSDUCER
8	STRUCTURAL STEEL BASE
9	SINGLE POINT DISCONNECT (SPD) (OPTIONAL)

LEGEND	DESCRIPTION	PHASE	VOLTAGE
C	CONTROLLER	1	120V 240V
D	VARIABLE FREQUENCY DRIVE	1 3	200-240V 380-480V 525-600V
E	SINGLE POINT DISCONNECT	3	120V 240V 480V 600V

PUMP	OL (NOTE-5)	HM	ME	HL
PVM[X]1,3&5	31.8-57.0	5.4	4.3	27.8
PVM[X]10&15	31.8-62.2	6.5	5.0	27.8
PVM[X]20	31.8-62.2	6.5	5.6	27.8
PVM[X]33	31.8-62.2	7.5	5.6	27.8

MATERIAL:																			
COMPANY CONFIDENTIAL: Information contained herein is confidential. It is the property of Pentair and is not to be used solely for the purpose provided, and it is not to be released to others without the prior written consent of Pentair.																			
DO NOT SCALE DRAWING										DUPEX - INTELLIBOOST SYSTEM FRONT VIEW									
DRAWN BY CS					DATE 04/27/16					CHECKED BY MH					APPROVED BY REV				
PATTERN NUMBER -					SIZE D					PART NUMBER 299 0002 000					REV 1:15				
REV		ZONE		DATE		STAMPING DIMENSIONS (UNLESS OTHERWISE SPECIFIED)				REVISION DESCRIPTION				BY		CHK'D			
A		ALL		02/26/16						INITIAL RELEASE				CS		SN			
<p>REVISIONS: 1-120 MAG. 200-010-127-254MVS AND REMOVED 200-010-127-</p>																			