



# 10VT / 10TMH SERIES

10" VERTICAL LINE SHAFT AND  
10" SUBMERSIBLE TURBINE PUMPS





# GET MORE PERFORMANCE WITH LESS EFFORT

Ask for the pump series that delivers an average of 27% more head per stage\* versus the current Fairbanks Nijhuis and Berkeley models.

## MORE PERFORMANCE

CURRENT

NEW 27% MORE

AVERAGE OF 27%  
MORE HEAD PER  
STAGE.\*

## MORE EFFICIENCY

CURRENT

NEW 6% MORE

UP TO 6%  
IMPROVEMENT  
IN EFFICIENCY.\*\*

## MORE VALUE

CURRENT

NEW 7% MORE

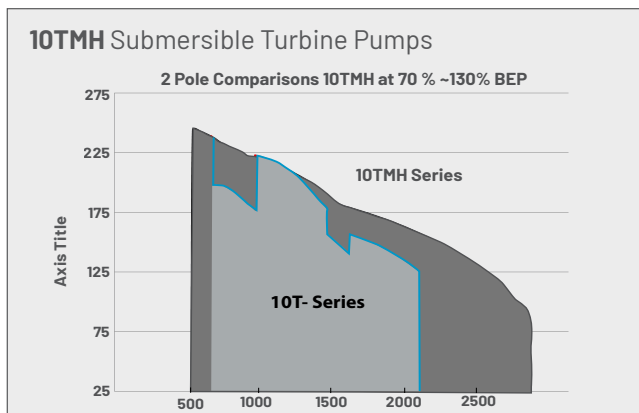
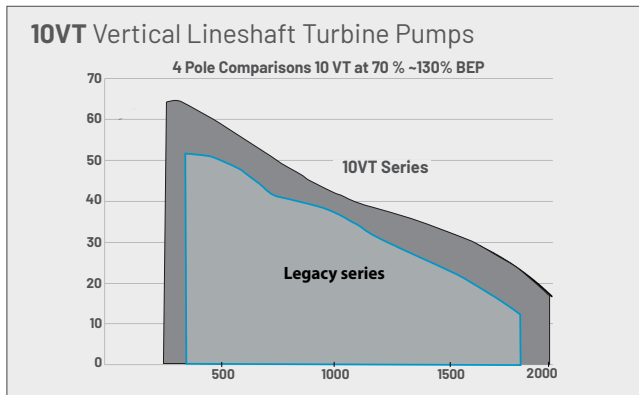
UP TO 7%  
IMPROVEMENT  
IN COST OF  
OPERATION.†

\*Head per stage improvement based on comparing current models single stage head per stage, at BEP, versus new models single stage head per stage, at current model's BEP flow rating.

\*\*Efficiency improvement based on comparing current models for stage efficiency, at BEP, versus new models (comparable performance) efficiency at current model's BEP flow rating.

†Cost of Operation improvement based on comparing current model for stage bowl horsepower requirement, at BEP, versus new models (comparable performance) bowl horsepower at current model's BEP flow rating. Bowl horsepower was then converted to kilowatts, to generate electricity costs (Cost of Operation).

## MORE COVERAGE (WITH FEWER MODELS)



## LESS EFFORT

NEW - Berkeley 10" VLST/SUB T offering (irrigation)

Flow Series	Bowls	Impellers	Inlet Adapters	Adapters	Suction Bells	Discharge Adapters	Adapters
10VT275							
10VT400 10TMH-750							
10VT550 10TMH-1000							
10VT700 10TMH-1350							
10VT900 10TMH-1750							
10VT1150 10TMH-2250							
10VT1500				No adapter needed			
VLST 7	7	7	1	4	1	4	2
Sub T	-	-	3	-	-	1	-
Total		7	4	4	1	5	2
Total VLST				26			
Total VLST + Sub T				30			

PREVIOUS - fairbanks Nijhuis/Berkeley 10" VLST/SUB T offering (irrigation)

Flow Series	Bowls	Impellers	Suction Cases	Suction Bells	Discharge Cases
8T-950				n/a	
10VT-250, 10VT-300					6
10A/10T-750, 10B/10T-900, 10D/10T-1200					
10M					
10G/10T-1600, 10J/10T-1900					
10K, 10N					
10RM, 10RL, 10RH					
10XL				No suction bell option	
10XHH					
VLST 15	8	15	8	7	25
Sub T 6	1	1	6	-	3
Total 21	9	16	14	7	28
Total VLST				63	
Total VLST + Sub T				74	

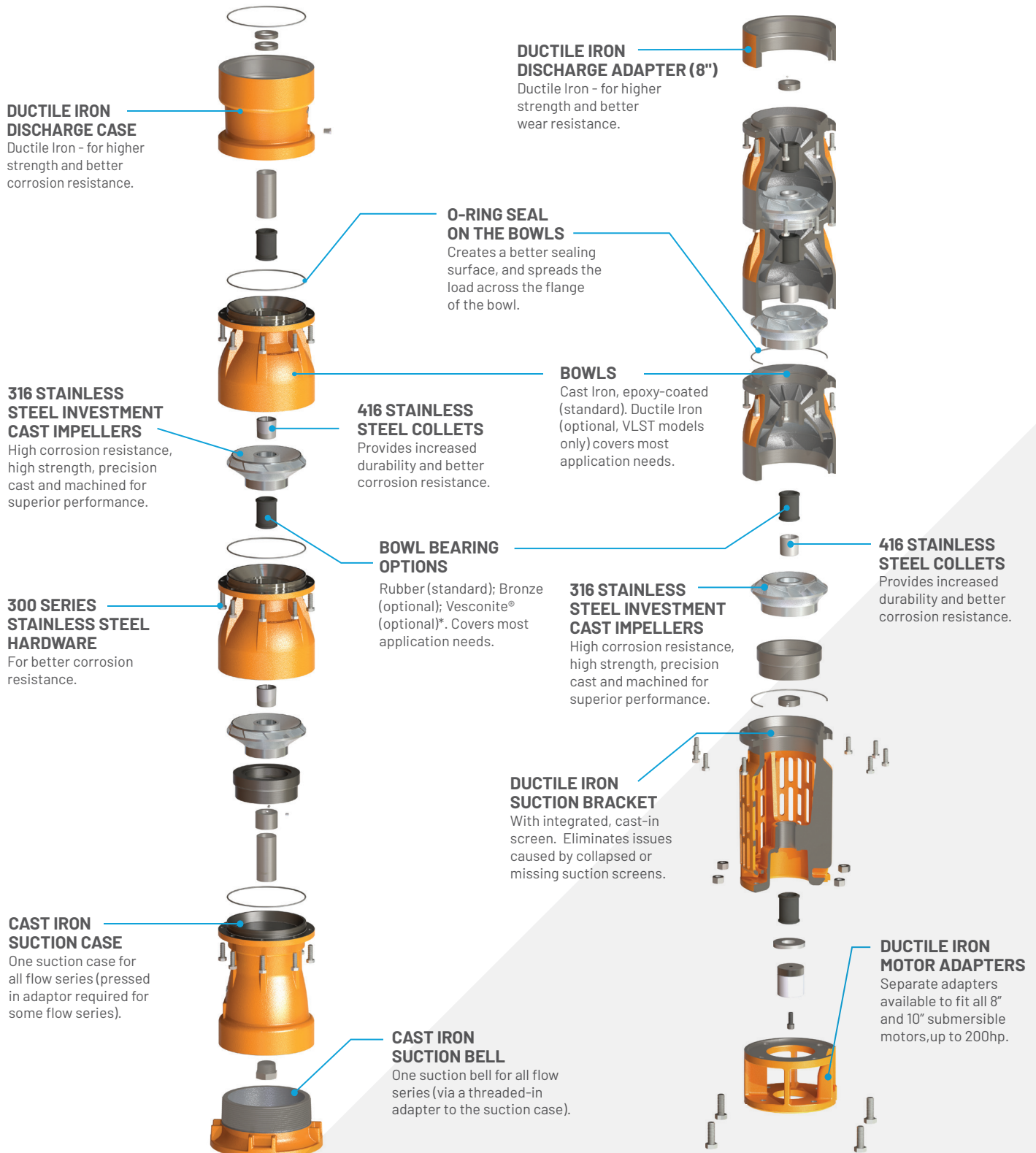
## WHAT THIS MEANS FOR YOU

Quoting is easier and faster. Pump assembly and delivery is quicker.

# DESIGNED FOR MAXIMUM EXECUTION

## 10VT VERTICAL LINESHAFT TURBINE PUMPS

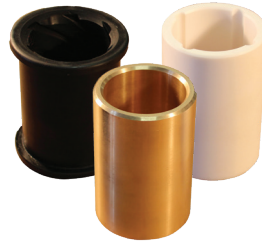
## 10TMH SUBMERSIBLE TURBINE PUMPS



# FLEXIBLE CONFIGURATION OPTIONS



- ◆ Motor brackets to fit all 8" and 10" submersible motors.



- ◆ Multiple bearing material options for intermediate bowls.



- ◆ Suction bracket with integrated suction screen.



- ◆ One suction case and one suction bell for ALL flow series.



- ◆ Semi-open impeller option for each flow series (VLST models only).

## DRIVING INNOVATION IN PRODUCTS

### CHECK OUT THESE OTHER GREAT PRODUCTS

- ◆ 12VT Series - Vertical Lineshaft Turbine Pumps
- ◆ 5, 6, and 7 TMH Series - Submersible Turbine Pumps
- ◆ Pentek® XE-6 and XE-8 - 6" and 8" Submersible Motors
- ◆ Pentek Intellidrive XL - high horsepower, Variable Frequency Drives



293 Wright Street | Delavan, WI 53115 | Ph: 866.973.6835 | Fx: 800.321.8793 | [pentair.com](http://pentair.com)

All indicated Pentair trademarks and logos are property of Pentair. Third party registered and unregistered trademarks and logos are the property of their respective owners.

\*Vesconite® is a registered trademark of Virginia Engineering Services (Pty) Limited.

©2024 Pentair. All Rights Reserved.

B12121BK (02-16-24)