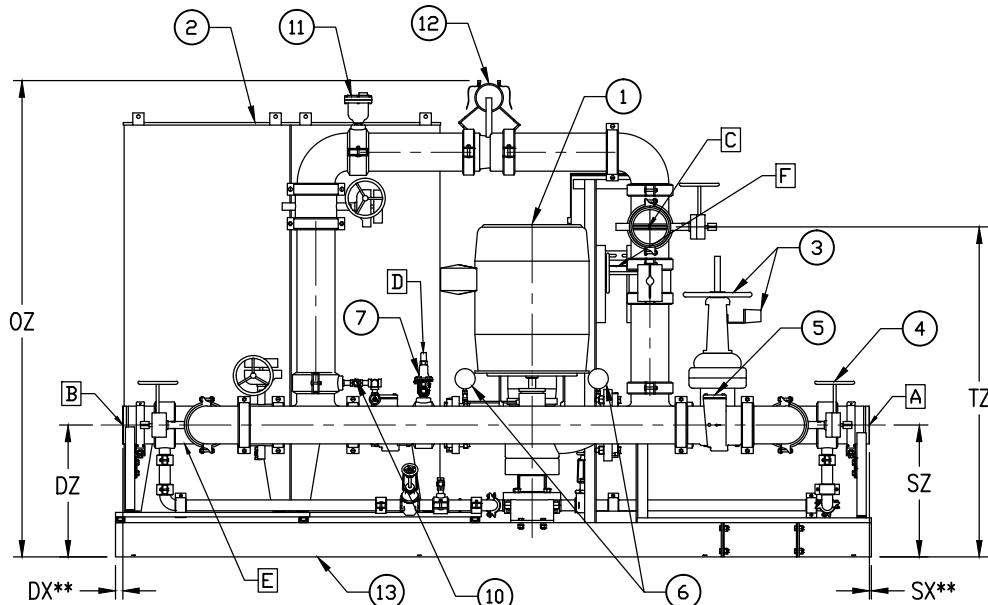
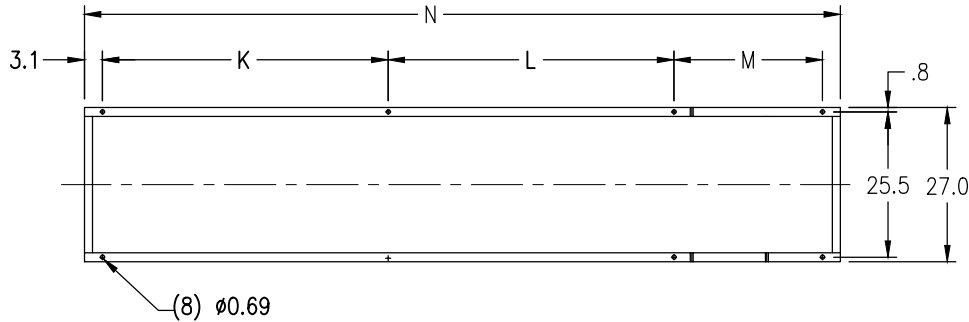


TOP VIEW



BACK VIEW



ANCHOR BOLT DETAILS

CUSTOMER CONNECTION SIZES			
FLOW	A	B	C
750	6"	6"	6"
500	6"	6"	4"
450	6"	6"	4"
400	4"	4"	4"
300	4"	4"	3"
250	4"	3"	3"
200	3"	3"	2.5"
150	2.5"	2.5"	2.5"
100	2"	2"	2.5"
50	2"	2"	2"

CUSTOMER CONNECTION LIST	
LEGEND	DESCRIPTION
A	SUCTION, GROOVED
B	DISCHARGE, GROOVED
C	HOSE HEADER, GROOVED
D	CASING RELIEF VALVE, 3/4" FNPT
E	FIRE PUMP CONTROLLER INCOMING ELECTRICAL
F	JOCKEY PUMP CONTROLLER INCOMING ELECTRICAL

- NOTES:
- DIMENSIONS ARE IN INCHES AND MAY VARY $\pm 1/2"$.
 - OVERALL DIMENSIONS MAY VARY DEPENDING ON THE CONTROLLER SELECTION BY CUSTOMER.
 - ** DIMENSION TABLE VALUES IN PARENTHESES () DENOTE THE PIPE PROJECTION OVERHANGS SKID.
 - STRUCTURAL STEEL BASE TO BE GROUTED ON SITE BY OTHERS.
 - TAMPER SWITCHES TO BE WIRED TO CUSTOMER ALARM BY OTHERS.
 - ALL PIPES ARE OF SCHEDULE 40 STEEL PAINTED RED PER AURORA OR FBN STD 668.
 - ALL PUMP AND PIPING DRAINS TO BE PIPED TO CUSTOMER SUPPLIED DRAIN LOCATION BY OTHERS.
 - REFER TO SPECIFIC CONTROLLER MANUFACTURERS LATEST DIMENSIONAL DRAWINGS FOR ALTERNATE STARTING METHODS AND TRANSFER SWITCH.
 - FOR MAXIMUM CONTROLLER SIZE REFER "MAXIMUM CONTROLLER DIMENSION" TABLE.
 - ALL PIPE AND FITTING CONNECTIONS ARE GROOVED.

PART LIST	
LEGEND	DESCRIPTION
1	IN-LINE FIRE PUMP
2	FIRE PUMP CONTROLLER
3	OS&Y GROOVED GATE VALVE WITH TAMPER SWITCH
4	BUTTERFLY ISOLATION VALVE WITH TAMPER SWITCH
5	GROOVED CHECK VALVE
6	SUCTION AND DISCHARGE GAUGES
7	CASING RELIEF VALVE
8	JOCKEY CONTROLLER
9	PVM MULTISTAGE JOCKEY PUMP
10	1/2" PRESSURE SENSING LINE
11	AUTOMATIC AIR RELEASE VALVE (WITH TEST LOOP ONLY)
12	GROOVED FLOWMETER
13	SYSTEM MOUNTING STRUCTURAL BASE
14	JOCKEY RELIEF VALVE (OPTIONAL; NOT SHOWN)

DIMENSION TABLE													
FLOW	PUMP	SX**	SY	SZ	DX**	DY	DZ	TX	TY	TZ	OX	OY	OZ
750	4"1593F	(1.6)	19.9	23.8	(0.7)	19.9	23.8	38.4	32.4	58.5	134.7	45.1	84.0
750	4"1594BF	0.4	19.9	23.1	1.3	19.9	23.1	38.4	32.4	57.7	132.3	45.1	83.3
500	4"1594BF/4"1594F	0.4	19.9	23.1	1.3	19.9	23.1	38.4	31.1	57.7	132.3	45.1	83.3
500	4"1593CF/4"1593BF	(2.2)	19.9	20.5	4.3	19.9	21.0	38.4	31.1	53.2	134.5	45.1	78.7
500	4"1591CF	(2.2)	19.9	20.2	4.3	19.9	21.3	38.4	31.1	48.4	134.5	45.1	78.4
500	4"1591BF	(2.2)	19.9	20.2	4.3	19.9	21.3	38.4	31.1	51.4	134.5	45.1	78.4
450	4"1593BF/4"1592F	(2.2)	19.9	20.5	4.3	19.9	21.0	38.4	29.6	52.4	134.5	45.1	78.4
450	4"1591CF/4"1591BF	(2.2)	19.9	20.2	4.3	19.9	21.3	38.4	29.6	51.1	134.5	45.1	78.4
450	4"1594BF/4"1594F	0.4	19.9	23.1	1.3	19.9	23.1	38.4	29.6	57.9	132.3	45.1	79.7
400	4"1593BF/4"1592F	1.4	19.9	21.5	5.3	19.9	21.0	32.4	29.6	53.4	118.8	41.4	75.2
400	4"1591CF	6.5	19.9	21.3	5.3	19.9	21.3	32.4	29.6	48.6	118.8	41.4	70.4
400	4"1591BF	6.5	19.9	21.3	5.3	19.9	21.3	32.4	29.6	52.6	118.8	41.4	74.4
400	4"1594F	(2.1)	19.9	24.1	2.3	19.9	23.1	32.4	29.6	58.4	120.9	41.4	80.3
300	4"1593BF/4"1592F	1.4	19.9	21.5	5.3	19.9	21.0	32.4	28.8	53.4	118.8	41.4	75.2
300	4"1591BF	6.5	19.9	21.3	5.3	19.9	21.3	32.4	28.8	52.6	118.8	41.4	74.4
300	3"1593BF	6.5	19.9	20.9	5.3	19.9	20.9	32.4	28.8	48.7	118.8	41.4	70.6
300	3"1591CF	6.5	19.9	20.8	5.3	19.9	20.8	32.4	28.8	47.6	118.8	41.4	69.4
250	4"1592F	1.4	19.9	21.5	11.0	19.9	21.0	32.4	28.8	52.3	118.8	43.7	74.1
250	3"1593BF	6.5	19.9	20.9	11.0	19.9	20.9	32.4	28.8	45.9	118.8	43.7	67.7
250	3"1593F	6.5	19.9	19.9	11.0	19.9	19.9	32.4	28.8	48.7	118.8	43.7	70.5
250	3"1591CF	6.5	19.9	20.8	11.0	19.9	20.8	32.4	28.8	45.1	118.8	43.7	67.1
250	3"1591BF	4.0	19.9	19.8	12.5	19.9	20.3	32.4	28.8	47.5	118.8	43.7	69.3
200	3"1593BF	(1.7)	19.9	19.9	1.0	19.9	19.4	28.7	28.1	46.2	102.0	38.3	67.1
200	3"1592AF	2.4	19.9	18.8	1.0	19.9	18.8	28.7	28.1	50.1	100.2	38.3	68.6
200	3"1593F	(1.7)	19.9	18.9	1.0	19.9	18.4	28.7	28.1	48.2	102.0	38.3	67.1
200	3"1591CF	(1.7)	19.9	19.8	1.0	19.9	19.3	28.7	28.1	45.1	102.0	38.3	67.1
200	3"1591AF	3.9	19.9	18.8	2.5	19.9	18.8	28.7	28.1	47.1	100.2	38.3	67.1
150	3"1593BF	0.9	19.9	20.2	1.4	19.9	19.4	26.7	28.1	45.7	100.2	37.2	67.1
150	3"1592AF	(0.1)	19.9	19.1	1.4	19.9	18.8	26.7	28.1	50.1	100.4	37.2	68.6
150	3"1591CF	0.9	19.9	20.1	1.4	19.9	19.3	26.7	28.1	45.6	100.2	37.2	67.1
150	3"1591AF	1.4	19.9	19.1	2.9	19.9	18.8	26.7	28.1	48.6	100.2	37.2	67.1
100	3"1593BF	(1.4)	19.9	20.4	0.1	19.9	19.4	29.5	27.6	46.7	101.6	36.1	67.1
100	3"1592AF	(0.9)	19.9	19.3	0.1	19.9	18.8	29.5	27.6	51.1	101.1	36.1	68.6
100	3"1591AF	0.6	19.9	19.3	1.6	19.9	18.8	29.5	27.6	48.1	100.2	36.1	67.1
100	2"1591CF	4.3	19.9	17.8	3.7	19.9	17.8	29.5	27.6	47.1	100.2	36.1	67.1
50	3"1593BF	(1.4)	19.9	20.4	0.1	19.9	19.4	29.5	27.5	47.5	101.6	36.1	67.1
50	3"1592AF	(0.9)	19.9	19.3	0.1	19.9	18.8	29.5	27.5	52.2	101.1	36.1	68.8
50	2"1591CF	4.3	19.9	17.8	3.7	19.9	17.8	29.5	27.5	47.9	100.2	36.1	67.1

ANCHOR BOLTS				
FLOW	K	L	M	N
50-200	40.5	40.5	13	100.2
250-400	46.3	46.3	20	118.8
450-750	50	50	26	132.3

MAXIMUM CONTROLLER DIMENSION		
FLOW	DEPTH	WIDTH
50-200	16	45
250-400	16	53
450-750	16	60

				MATERIAL:			
				COMPANY CONFIDENTIAL: Information contained herein is confidential. It is the property of PENTAIR. It is to be used solely for the purpose provided, and it is not to be disclosed to others without the prior written consent of PENTAIR.			
A	ALL	07/28/16	INITIAL RELEASE	SK	VN	DO NOT SCALE DRAWING	
REV	ZONE	DATE	REVISION DESCRIPTION	BY	CHK'D		
				STANDARD TOLERANCES UNLESS OTHERWISE SPECIFIED.		CPS FAIRBANKS NJ/HUIS	
				L-R WITH BYPASS, TEST LOOP & JOCKEY PUMP		DRAWN BY SK DATE 07/28/16 CHECKED BY VN APPROVED BY MH	
				PLOT SCALE 1:16		PATTERN NUMBER - SIZE PART NUMBER D 295 0030 000 A	